

Math Activities

The Heads In, Hearts In family enrichment program encourages families to use their minds (putting their “heads in”) as a tool to expand their knowledge around a variety of topic areas. By creating a shared educational experience, the family unit will work, grow and learn together, putting their “hearts in” to the process.

This unit contains the following:

- ▶ 3D Shapes
- ▶ Eggs-cellent Counting
- ▶ Guess Which Shape
- ▶ Gumball Equations
- ▶ Hungry Hedgehogs
- ▶ Marshmallow Structures
- ▶ Measure a Room
- ▶ Measurement Equivalents
- ▶ Measuring Liquids
- ▶ Photo-Graph
- ▶ Pie Die
- ▶ Skippy Clippy
- ▶ Spinner Math
- ▶ Stories Math
- ▶ Time: Before and After
- ▶ Twisting Place Values



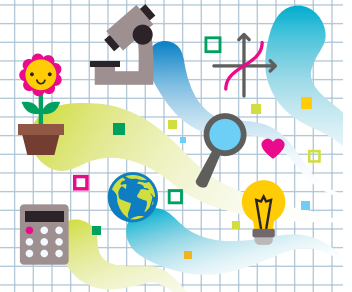
MSU is an affirmative-action, equal-opportunity employer, committed to achieving excellence through a diverse workforce and inclusive culture that encourages all people to reach their full potential. Michigan State University Extension programs and materials are open to all without regard to race, color, national origin, gender, gender identity, religion, age, height, weight, disability, political beliefs, sexual orientation, marital status, family status or veteran status. Issued in furtherance of MSU Extension work, acts of May 8 and June 30, 1914, in cooperation with the U.S. Department of Agriculture. Quentin Tyler, Interim Director, MSU Extension, East Lansing, MI 48824. This information is for educational purposes only. Reference to commercial products or trade names does not imply endorsement by MSU Extension or bias against those not mentioned. Produced by the MSU Extension Educational Materials Team (<http://msue.anr.msu.edu/>). 1P-05:2021-WEB-PA/LG WCAG 2.0



HEADS IN, HEARTS IN

Gumball Equations

Instructions for Set-Up



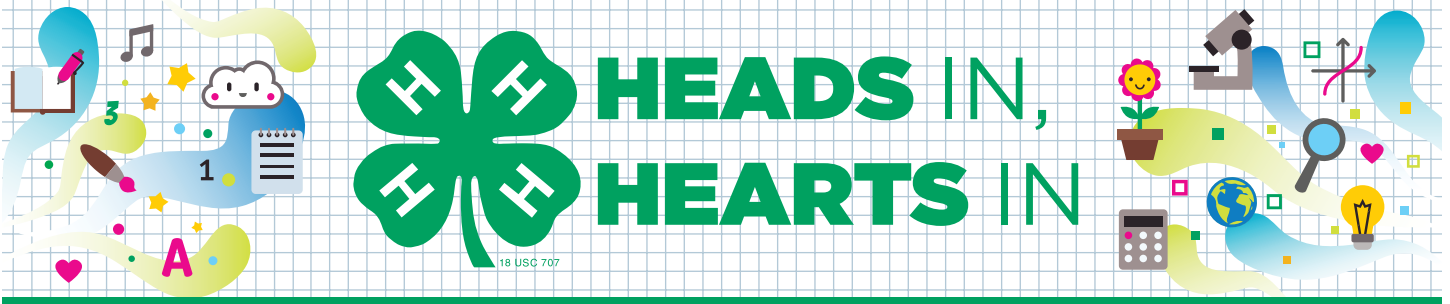
Supplies

- “Guide for Families” handout
- Clear plastic standup display (optional)
- “Gumball Equations” handout (2 per participant or family)
- ¼ inch dot stickers or labels in three colors (10–15 per participant or family)
- Markers or crayons
- Display table

Activity Preparation

- ▶ Purchase or locate items on supply list.
- ▶ Print one copy of the “Guide for Families” handout. Laminate or place in a clear plastic standup display to allow participants to see it more readily.
- ▶ Print two “Gumball Equations” handouts per participant or family.
- ▶ Set up the display table and arrange needed supplies.





Gumball Equations

Guide for Families

Learning Objectives

What you need to know:

An **equation** is a math sentence that has two sides that are equal separated by an equal sign (=). For example, in the **equation** $1+1=2$, both sides of the equation are equal and show two different ways to represent a number.

What you will do and learn:

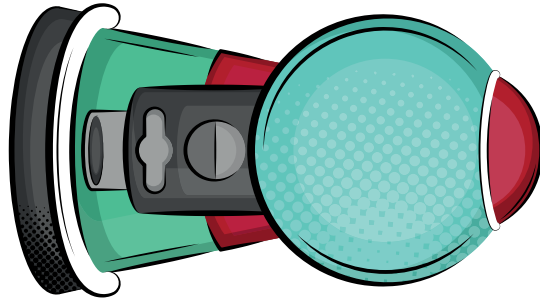
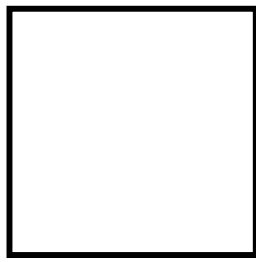
In this activity you will practice counting objects, adding them together to get the total and completing equations.

Instructions

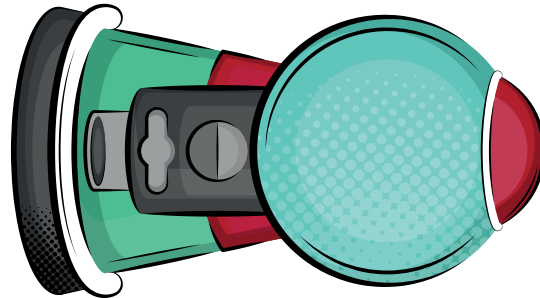
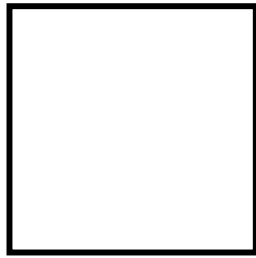
1. Take a “Gumball Equations” handout.
2. In the first gumball machine, place a few stickers of the same color.
3. In the second gumball machine, place a few stickers of the second color.
4. In the third gumball machine, place a few stickers of the third color.
5. Count the number of stickers in each gumball machine and write the number in the box below the gumball machine with a crayon or marker.
6. Add the number of stickers together and write the total in the box after the + sign.
7. Repeat this activity a second time with a different number of stickers.

Gumball Equations

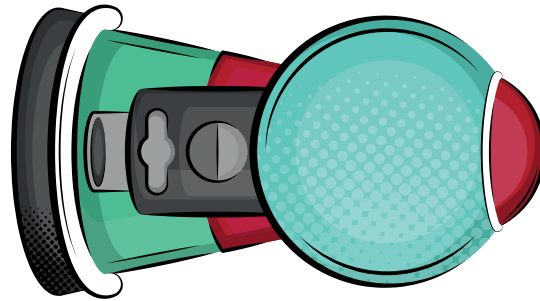
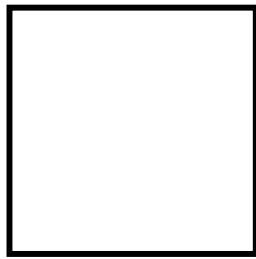
Gumball Equations Handout



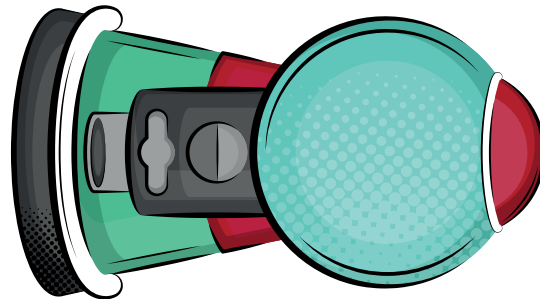
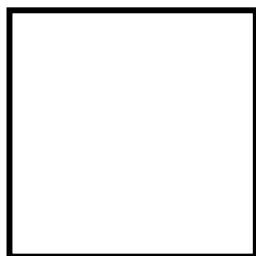
+



+

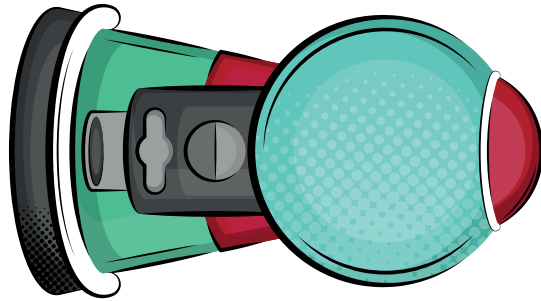
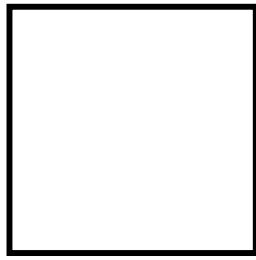


=

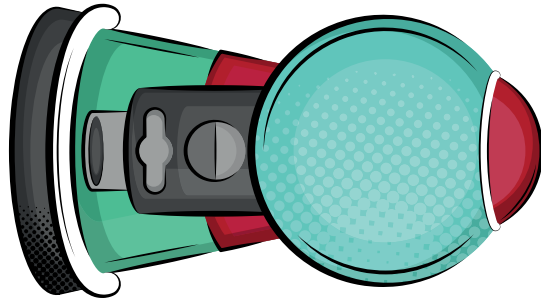
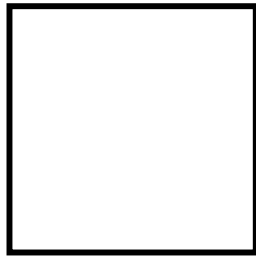


Gumball Equations

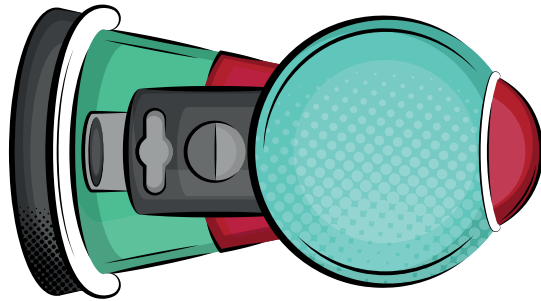
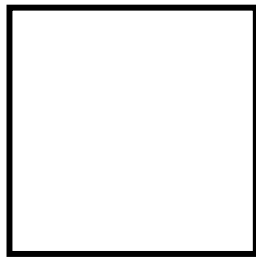
Gumball Equations Handout, continued



+



+



=

