

BOARD OF DIRECTORS

President: Brian Troyer, *at-large*
Vice-president: Ken Gasper, *NorthStar Cooperative*
Secretary: Dr. Miriam Weber Nielsen, *MSU Dept. of Animal Science*

Randy BeVier, *at-large*
Nancy Blaauw, *at-large*
Norm Buning, *at-large*
Sheila Burkhardt, *at-large*
Lauren Bush, *at-large*
Jeff Bushey, *at-large*
Chuck Courtade, *Dairy Farmers of America*
Tom Davis, *at-large*
John Dilland, *at-large*
Dr. Mark Fox, *at-large*
Eric Frahm, *Michigan Milk Producers Association*
Velmar Green, *Michigan Milk Producers Association*
Bryan Hull, *Dairy Farmers of America*
Jason Wadaga, *Michigan Dairy Foods Association*
Dana Sue Kirk, *at-large*
Cortney Lupp, *at-large*
Dwight Nash, *Dairy Farmers of America*
Gary Nelsen, *at-large*
Tom Nugent, *at-large*
Dr. John Partridge, *MSU Dept. of Food Science and Human Nutrition*
Carl Rasch, *Michigan Milk Producers Association*
Remus Rigg, *at-large*
Gene Sickels, *at-large*
John Stout, *at-large*
Bridgette Voisinet, *NorthStar Cooperative*

Supporting Tomorrow's Dairy Leaders!



MDMSF scholarship recipients at the 2016 Annual Meeting of the MDMSF board of directors. Pictured L-R, from back: Kyle Benthem, Kelly Raterink, Nathan Buning; Laura Lubeski, Brittini Tucker, Shelby Berens, Courtney Doan; Jared Sanderson, Torei Kulpinski, Louise Vanderploeg; Ethan Haywood, Erica Drake, Mason Smith; Libby Venema, Marin Western, Alyssa Gehring and Rachel Ekkel.

THE MICHIGAN DAIRY MEMORIAL SCHOLARSHIP FUND: AT A GLANCE

Thanks to the generous support of donors, the Michigan Dairy Memorial and Scholarship Foundation (MDMSF) at Michigan State University (MSU) is proud to highlight an impressive list of scholarships made possible in 2015-2016:

- \$1,500 for fall semester to five freshmen in Ag Tech or 4-year program
- \$2,000 for fall semester to five Ag Tech Students
- \$3,500 over two semesters to 10 students in a 4-year program
- **Glenn and Anne Lake Scholarship** – \$7,500 over two semesters
- **Russel Erickson Scholarship** – \$5,000 over two semesters
- **John and Barbara Dilland Scholarship** – \$3,500 over two semesters for a student majoring in Agribusiness Management
- **Redmond and Edna Cotter Purina Memorial Scholarship** – \$4,000 for a Production Animal Scholar in veterinary school with preference extended to those with international interest
- **Jack and Betty Barnes International Scholarship** – three \$1,000 scholarships for international experiences
- **Archie Studer Scholarship** - \$3,500 over two semesters for a student with interest in dairy breeding or production
- **Donald and Valera Murray Scholarship** – \$4,000 over two semesters
- **Velmar Green Scholarship** - \$3,500 over two semesters for a second-year student in the Ag Tech Dairy Management Program
- **Harold and Lillian Gremel Scholarship** – \$3,500 over two semesters for a Production Animal Scholar in veterinary school
- **Nick Bellows Scholarship** - \$3,500 over two semesters for a student with interest in dairy promotion



PRESIDENT'S MESSAGE

The Michigan Dairy Memorial and Scholarship Foundation was established to help students in the dairy science (production) and dairy foods programs at Michigan State University (MSU) be able to better afford the cost of tuition. In the spring of 1978, I was fortunate to be one of the students awarded a scholarship. It helped me afford the next three years of my undergraduate education. For the past 35 years, I have been involved in a variety of endeavors in the industry, and I have often thought that the assistance I received was a key part of my success along the way.

Fast forward to 2016 and we have an industry in critical need of young people who are properly trained in both the production and processing sides of our dairy industry. The cost of education has risen significantly from what it was when I was an undergrad, so the need for scholarship assistance like that provided by the Foundation is critical to help train the next generation of dairy industry participants.

The Michigan Dairy Memorial and Scholarship Foundation funds its scholarships through a program recognizing those who have contributed to the Michigan dairy industry during their career. Honorees have come from dairy farms, allied industry (veterinarians, nutritionists, etc.), cooperatives and the dairy processing industry. These contributions are placed in a fund, and through appropriate investments, the resulting proceeds are used for scholarships and to support other undergraduate educational activities.

Individual donations/contributions are accepted and appreciated. A \$1,000 donation is recognized as a Foundation Honoree. This endowment is a meaningful way to honor a deserving member of the industry. The industry's generosity allowed the Foundation to award 33 scholarships to deserving dairy students in the 2015-16 academic year totaling \$93,000.

Please join us in supporting the next generation of our Michigan dairy industry.

Brian Troyer
MDMSF President

MAKE A CONTRIBUTION TO MDMSF

When the occasion suggests flowers, consider a living, growing tribute.

MICHIGAN DAIRY MEMORIAL AND SCHOLARSHIP FOUNDATION

Where the earnings provide scholarships to worthy
students in dairy industry-related fields.

Make checks payable to: Michigan State University
Designate: Michigan Dairy Memorial and Scholarship
Foundation (A10901)

MAIL TO:

Dr. Miriam Weber Nielsen
Department of Animal Science
Michigan State University
2265 Anthony Hall, 474 S. Shaw Lane
East Lansing, MI 48824-1225



2015-2016 DAIRY MEMORIAL HONOREES



MIKE FORDYCE

Mike Fordyce, sales manager for Purina Animal Nutrition, has been honored by the Michigan Dairy Memorial and Scholarship Foundation (MDMSF) at Michigan State University (MSU) for his years of leadership partnering closely with dairy producers and positively impacting their business profitability and quality of life, and the sustainability of Michigan's dairy industry.

Fordyce grew up in Bismarck, North Dakota, the son of Gordon and Arlys Fordyce. He earned a degree in education from Minnesota (Mankato) State University. Fordyce played hockey for one year and baseball for four years, where he competed in the Division II College World Series.

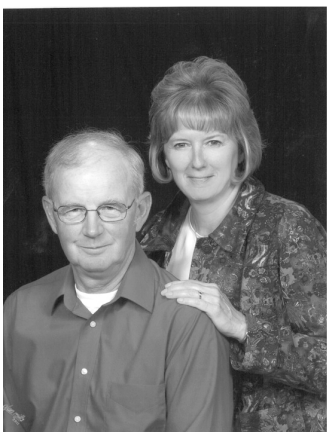
In 1980, Fordyce started his career in the dairy industry by working for the Ralston Purina Co. He and his wife Sandy transitioned into sales management with the company in 1989. They relocated to Michigan as leaders of the sales team in 1990, where they applied a value-added approach for growing and supporting the dairy business and successfully navigated their team through rapidly changing dairy markets during several challenging years faced by the dairy industry. Fordyce led the Purina Dairy Team in Michigan for 24 years before transitioning to a national position with the company.

Fordyce's passion for people and the dairy industry led him to engage with the MSU dairy program. He was invited as a guest lecturer for MSU dairy classes and interviewed and mentored students to help prepare them for career paths in the industry. Fordyce further exemplified his commitment to young people and the state's dairy industry by developing dairy internships for students in Michigan and supporting MSU Dairy Club activities and programs.

He and his team provided key support in growing the MSU Dairy Challenge program and initiated Purina's support of the program both regionally and nationally. Fordyce played an integral role in creating a unique collaboration with the MSU College of Veterinary Medicine in establishing the Training Center for Dairy Professionals at Green Meadows Farms, Inc., in Elsie, Mich.

Always asking, "What next?", Fordyce found another avenue for making a difference by serving on the MDMSF board of directors beginning in 2000. He contributed actively to the Board in various roles, including serving on the Scholarship Selection Committee for several three-year terms, the 50th Anniversary Planning Committee, the Promotions Committee and, from 2003 through 2006, as Vice-President and President of the Board.

The dairy industry of Michigan has held national prominence as Michigan's dairy producers continue to serve in key leadership roles. Fordyce's vision and drive has meshed well with the Michigan dairy industry's history of generating and leading positive impact on profitability, sustainability and progress.



RICHARD AND PATRICIA HYDE

The late Richard (Dick) and Patricia Hyde, of Morley, Mich., have been honored by the MDMSF at MSU for their years of dedication and devotion to their family and involvement in the dairy industry. Richard passed away in 2014 at the age of 68; Patricia survives him.

Richard Hyde was born in Ionia, Mich., and graduated from Morley-Stanwood High School in 1964. After graduation, he earned a Bachelor's of Science degree in Dairy Science from MSU. In 1969, he was drafted by the United States Marines Corp., and served in the artillery division during the Vietnam War. After the war, Richard returned to the family farm.

Patricia Hyde was born in Fowlerville, the daughter of George and Jean Robb. She graduated from Fowlerville High School in 1973.

Both Richard and Patricia were raised on dairy farms and active 4-H members growing up. The couple's romance started at the Rustic Herd Dispersal in 1973; they married in 1975. Over the course of the Hyde's 39-year union, they had three children, Shaun (Betty Jo), Michelle (Jim) Neff, and Katie (Jeff) Pierson, and established a registered Holstein and Jersey farm in Morley, Mich.

Passionate about agriculture, Richard Hyde was involved in many organizations, including the Michigan Farm Bureau, Michigan Maple Syrup Association, and the Michigan Milk Producers Association (MMPA). He was a former president of the Michigan Holstein Association, represented Michigan as a state delegate for Holstein Association U.S.A. at its annual membership meeting, and served as a leader for the Winfield Hustlers 4-H Club for more than 25 years.

2015-2016 DAIRY MEMORIAL HONOREES, CONTINUED

RICHARD AND PATRICIA HYDE, CONTINUED

Patricia Hyde served on the Montcalm County Farm Bureau board of directors, was an MMPA dairy communicator for 20 years, and as a dairy diplomat, helped organize the Little Red Barn at the Montcalm County 4-H Fair for 30 years. She also served as a leader for the Winfield Hustlers 4-H Club for more than 25 years. Patricia was the Winfield Township Clerk for eight years and worked as a paraprofessional for Morley-Stanwood Schools for 20 years.

In 1980, the Hyde's were awarded the District 5 Outstanding Young Dairy Couple by MMPA. Over the years, they have enjoyed watching their children grow up in 4-H and show Holsteins and Jerseys at the county and state levels. The family's Moram Holsteins and Rustic Jerseys herd, which dispersed in June 2016, performed well at the state level, including winning at the Great Lakes State Holstein Futurity.

All three of the Hyde children graduated from MSU, were recipients of the MDMSF scholarship, and are currently involved in the state's agriculture industry.



JOE AND MELVA OESCH

Joe and Melva Oesch, founders of Swisslane Dairy Farm in Alto, Mich., have been honored by the MDMSF at MSU for their years of commitment, dedication and devotion to their farm and community, God and family, and the dairy industry.

Joe Oesch was born in 1926 and raised on his family's first-generation dairy farm. He sacrificed attending school after the eighth grade to work on his family's 24-cow dairy farm and brother-in-law's field crop operation, sometimes working all night planting and harvesting crops for both farms, before assuming full responsibility when his brother and brother-in-law were drafted to serve in World War II. Once the war ended, he met Melva Crosby; the couple was married in 1950. Though not raised on a farm, the young wife quickly acclimated to the lifestyle and fit in with her strong work ethic and it wasn't long before she took on milking responsibilities.

The couple had six children – Fred, Bonnie, Sam, Jeff, Sally and Tom – and opened their home to two foster children, one of whom (Ken) they adopted in 1974. In 1981, Joe and Melva formed a partnership with sons Fred, Tom and Jeff, and named the operation SwissLane Dairy Farms.

Both Joe and Melva were active members of the Alto Apostolic Christian Church. They entertained overnight guests, hosted many events, participated on numerous committees and taught Sunday School. Melva's love for food, cooking and nutrition led her to become a Shaklee distributor and work as a chef and waitress at the local restaurant owned by a sister-in-law.

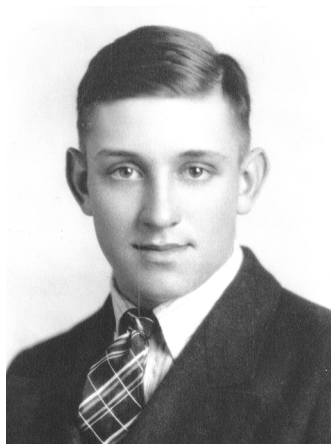
Even the couple's social time revolved around the farm. They were members of the Star Farm Bureau, a networking group of local farmers focused mainly on dairying. Joe especially enjoyed these monthly meetings because he would learn about the latest technology. This is perhaps his most remarkable attribute as a dairy farmer: learning about ways to improve, become more efficient and innovate. This was evidenced as he pushed for the farm to become one of the earliest adopters of Harvestore silos, Dairy Herd Improvement (DHI) milk testing, and artificial insemination. Another one of his favorite projects was carrying on the family tradition of making maple syrup.

Additionally, Joe's enthusiasm and support for 4-H has become a time-honored family tradition that his great-grandchildren still benefit from today. In fact, he has attended every single dairy show at the Kent County Fair since 1935.

Today, more than 33 members of the Oesch family live within two miles of the farm. The couple have 24 grandchildren and 51 great-grandchildren (with more on the way). There are currently 19 family members who work on the farm, and it remains farm policy to do minimal labor and no cropping on Sunday to honor the Sabbath.

Joe and Melva leave a legacy to the Oesch family and SwissLane Farms founded on family values, God-honoring conduct and thinking light-years ahead. In 2011, eight automatic milking units were installed allowing the operation to expand its herd by 500 head, increasing the milking herd to 2,000 cows. At the time, this was the biggest robotic dairy farm operating in the Midwest.

2014-2015 DAIRY MEMORIAL HONOREES, CONTINUED



HOWARD W. NASH

The late Howard W. Nash, a lifelong resident of Orange Township in Ionia County, Mich., was recently honored by the MDMSF at MSU for his years of interest in and commitment to the dairy industry. Nash passed away in 2012 at the age of 93.

Nash, the oldest of seven children, was born in 1919 and raised on his parents' dairy farm. As soon as he was old enough, he started showing dairy cattle at the Ionia Free Fair, selling the animal at the fair's annual 4-H auction to save up money for his future education.

Nash's participation in the Future Farmers of America in high school influenced his decision to enter the farming profession. In 1936, he was one of eight members of his program's dairy cattle judging team that won the state FFA contest. The victory earned the team a chance to compete at the national competition later that year in Kansas City, Kan., which they won. Nash used the partial scholarship he received from winning the judging championship to attend the Michigan State University short course starting in the fall of 1936. His studies concentrated on dairy farming.

In April 1945, Nash married Josephine Heator. The couple raised three children, Dwight, Sherry Jo and Teresa. They had eight grandchildren and 19 great-grandchildren, and were lifetime members of the Levalley United Methodist Church in rural Ionia County.

Together Howard and Josephine farmed an 80-acre farm in Orange Township in Ionia County, where they raised Holstein dairy cattle, hogs and chickens, as well as hay, beans, wheat, oats, corn and sorghum. Howard retired from farming in 2009 when the couple sold the farm to their grandchildren.

Nash frequently attended the Lake Odessa Livestock Auction and worked there in his later years. He was also employed by the Allis Chalmers parts warehouse in Lansing during the late 1960's and early 1970's, and was actively involved in an artificial breeders cooperative in Ionia.

MARK YOUR CALENDAR

February 28, 2017

Deadline for scholarship applications
(first-time and renewal applications for 4-year students)

April 28, 2017

Annual meeting of MDMSF Board of Directors

*For application or more information about MDMSF Scholarships,
visit www.ans.msu.edu and click on the "students" link.*

SCHOLARSHIP RECIPIENTS

The Michigan Dairy Memorial and Scholarship Foundation (MDMSF) has awarded more than \$90,000 in scholarships to 33 Michigan State University (MSU) students pursuing dairy industry-related programs of study for the 2015-16 academic year.



MEGGAN FREELAND

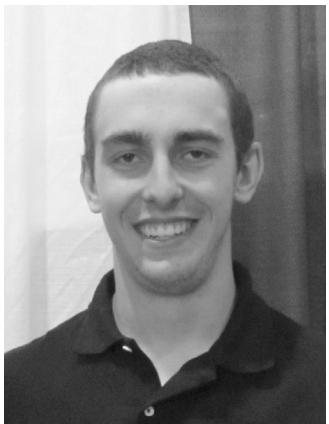
Harold and Lillian Gremel Scholarship

Meggan Freeland of Allegan, Mich., has been chosen as the 2015-16 recipient of the Harold and Lillian Gremel endowed scholarship through the Michigan Dairy Memorial and Scholarship Foundation Inc., at MSU. The \$3,500 scholarship is named in honor of Harold and in memory of Lillian Gremel of Sebewaing. The scholarship is awarded annually to a student currently in veterinary school at MSU who completed the Production Animal Scholars Program in the Department of Animal Science.

Freeland, the daughter of Ron and Cindy Freeland, received the award based on her academic achievements, involvement in extracurricular activities and interest in pursuing a career as a large animal (food production animal) veterinarian. She graduated from MSU with a bachelor's of animal science degree in production medicine in May 2015, and plans to earn her doctorate of veterinary medicine specializing in production animal medicine in May 2019.

As an MSU student, Freeland was a varsity letter winner and member of the Big Ten Cross Country championship team from 2010 to 2013. She also earned Academic All-Big Ten honors from 2009 to 2013. Freeland has gained practical experience working for Alta Genetics, Schaendorf Dairy Farm, Rich-Ro Dairy Farm, the Oakdale Large Animal Clinic, Fleming Dairy Farm and the MSU Swine Farm. She was a member of 4-H for 10 years.

The Harold and Lillian Gremel endowed scholarship was established in 2007 by the Gremel family. Together during their 52 years of marriage, the Huron County dairy producers and lifetime industry supporters were past recipients of the West Huron Michigan Milk Producers Association (MMPA) Outstanding Lifetime Achievement Award, honored as the MMPA Outstanding Young Dairy Couple, and chosen as the MSU Dairy Farmer of the Year. Harold also served on the Michigan Dairy Memorial and Scholarship Foundation board of directors. The Gremel endowed scholarship was the first Michigan Dairy Memorial and Scholarship Foundation scholarship designated for veterinary students.



TIMOTHY (TJ) FRAHM

Archie Studer Scholarship

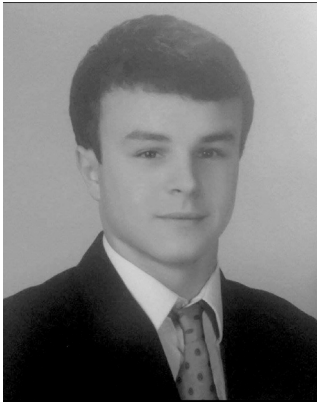
Timothy (TJ) Frahm of Frankenmuth, Mich., was chosen as the 2015-16 recipient of the Archie Studer Scholarship from the Michigan Dairy Memorial and Scholarship Foundation Inc. at MSU. The \$3,500 scholarship is named after the late Archie Studer, who owned and operated Kenowa Acres Dairy Farm for more than 35 years. Frahm is the fourth recipient of the Studer Scholarship.

Frahm is the son of Eric Frahm and Teresa Crook. He received the award based on his academic achievements, involvement in extracurricular activities and interest in one day attaining a career in dairy breeding. Timothy is a senior majoring in animal science and expects to graduate in Dec. 2016.

At MSU, Frahm has been an active member of the MSU Dairy Club and competed on the Michigan 4-H dairy cattle judging team at the All-American in Harrisburg, Penn., and the North American International Livestock Exhibition in Louisville, Ky. He will compete as a member of the MSU intercollegiate dairy cattle judging team in 2016. In 2012, Frahm won the All-American 4-H Dairy Management Contest in Harrisburg, Penn., and attended the Dairy Challenge Academy in Syracuse, NY, in 2015.

Prior to attending MSU, Frahm was active in 4-H and was selected to attend the National 4-H Dairy Conference. He was the Michigan Sugar Company West District Sugarbeet Project Prestige Winner in 2011 and 2012, and was awarded first place in the Health Occupations Students of America 2012 Michigan and 2012 Regional Clinical Specialty competitions. Frahm competed in the varsity science Olympiad and in varsity wrestling and soccer, and volunteered as an American Youth Soccer Organization referee for three years.

Frahm has been employed as a relief artificial insemination technician for ABS Global, Inc. since 2012. After graduation, he plans to work on his family's Golden Elm Dairy farm.



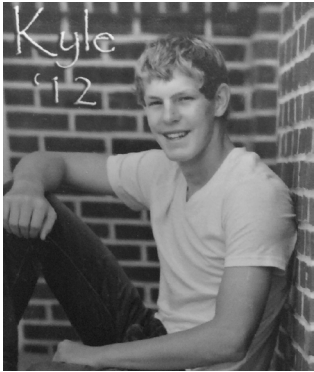
PAUL DUNNEBACK
Velmar Green Scholarship

Paul Dunneback of Grand Rapids, Mich., was chosen as the 2015-16 recipient of the Velmar Green Scholarship from the Michigan Dairy Memorial and Scholarship Foundation Inc., at MSU. The \$3,500 scholarship is named in honor of innovative dairy leader C. Velmar Green of Elsie, Mich. The award is presented to a second-year student in the MSU Institute of Agricultural Technology dairy management certificate program.

Dunneback is the son of Max, Sr., and Linda Dunneback. He received the award based on his academic achievements, involvement in extracurricular activities and interest in returning to his family's dairy and beef operation after graduation.

While at MSU, Cole completed a sales internship with Alta Genetics in Michigan, Indiana and Ohio. He also participated in the MSU and National Dairy Challenge contests in 2015.

The Velmar Green Scholarship was established in 2009 by the MMPA to recognize Green for his 40 years of service to the MMPA board of directors. Green is the owner of Green Meadow Farms, Inc., one of the largest herds of registered Holsteins in North America and home to an on-site teaching laboratory for MSU College of Veterinary Medicine students. Green was the 2012-13 chairperson of the Michigan Commission of Agriculture and recognized by the World Dairy Expo as the Dairyman of the Year in 2013.



KYLE BENTHEM
Russel Erickson Scholarship

Kyle Benthem of McBain, Mich., was chosen as the 2015-16 recipient of the Russel Erickson Scholarship from the Michigan Dairy Memorial and Scholarship Foundation Inc. The \$5,000 scholarship is named after Russel Erickson, MSU professor emeritus in the Department of Animal Science, and is awarded to a student whose career aspirations include working on or with dairy farms.

Benthem, the son of Bruce and Karen Benthem, is a senior majoring in agribusiness management and on schedule to graduate in May. He received the scholarship based on his academic achievements, involvement in extracurricular activities and interest in pursuing a career related to dairy cattle breeding or production.

At MSU, Benthem is involved in intramural athletics and has been on the Dean's List. He has been helping with the MSU women's basketball team since fall 2015. Upon graduating from MSU, Benthem plans to return to his family's dairy farm, Benthem Brothers Dairy.

Prior to attending MSU, Benthem studied business at Alma College for two years and competed on the university's men's varsity basketball team. He also completed a missions project to Santo Domingo, Dominican Republic, as a high school junior.



KELLY RATERINK
Glenn and Anne Lake Scholarship

Kelly Raterink of Zeeland, Mich., was chosen as the 2015-2016 recipient of the Glenn and Anne Lake Scholarship from the Michigan Dairy Memorial and Scholarship Foundation Inc. The scholarship is named after Michigan dairy farmers Glenn and Anne Lake and provides \$7,500 in scholarship money divided over two semesters. Glenn Lake served as president of the Michigan Milk Producers Association and National Milk Producers Federation and provided leadership in creating the Great Lakes Milk Marketing Federation, which helped dairy farmers secure bargaining rights to market their milk.

Raterink, the daughter of Dennis and Brenda Raterink, is currently a junior at MSU in the production animal scholar program and aspires to become an embryo transfer veterinarian. She was selected to receive the scholarship based on her academic achievements, involvement in extracurricular activities and interest in pursuing a career in the dairy industry.

While at MSU, Raterink has been an active member of the Sigma Alpha professional agriculture sorority and the MSU Dairy Science Club, serving as its treasurer and a board member with the Spartan Spectacular Calf Sale. She has been a member of both the Michigan 4-H and collegiate dairy cattle judging teams. A lifelong 4-H member, Raterink has served as the treasurer for the Michigan Junior Holstein Association and was the 2013 Michigan Junior Dairy Ambassador. She is actively involved with her family's dairy herd and manages her own club lamb business.



ETHAN HAYWOOD

Nick Bellows Scholarship

Ethan Haywood of Hastings, Mich., was chosen as the 2015-16 recipient of the Nick Bellows Scholarship from the Michigan Dairy Memorial and Scholarship Foundation Inc., at MSU. The \$3,500 scholarship is named in honor of Nick Bellows, the former chief executive officer of the United Dairy Industry of Michigan (UDIM). The award is presented to an MSU student with a career interest in dairy promotions.

Haywood is the son of Luke and Renee Haywood. He received the award based on his academic achievements, involvement in extracurricular activities and interest in one day attaining a career in agricultural marketing or communications or dairy-related sales. Haywood is a sophomore majoring in animal science and minoring in agronomy with an emphasis on forage production. He expects to graduate in 2018.

At MSU, Haywood has been an active member of the MSU Dairy Club and the MSU Block and Bridle Club. He was a member of the winning novice team in the 2014 MSU Dairy Challenge.

Prior to attending MSU, Haywood was active in FFA, serving as the Michigan FFA State Vice President in 2014. He earned the Michigan FFA State Star Farmer and Dairy Proficiency awards in 2014. Haywood was also active in 4-H and was the Barry County 4-H dairy and dairy feeder teen superintendent from 2012 to 2014.

Haywood is part owner of Haywood Brothers Sweet Corn and Haywood Family Cheese. He also is involved with the family's 1,200-head dairy operation, Sand Creek Dairy. After graduation, Haywood intends to be the sixth generation family member to return to the 100+-year-old dairy operation and continue diversifying the business.

The Nick Bellows Scholarship was established in 2011 by the UDIM board of directors and staff members to recognize Bellows for his two and a half decades of commitment and dedication as the organization's CEO. His record of service included directing the formation of many programs widely lauded as being among the nation's most effective in terms of increasing dairy consumption. Bellows accomplished this by building a solid network of partners from the Michigan business and scientific communities who invested their credibility and financial resources in local dairy promotion programs.



ALYSSA GEHRING

John and Barbara Dilland Endowed Scholarship

Alyssa Gehring of Harbor Beach, Mich., was chosen as the 2015-16 recipient of the John and Barbara Dilland endowed scholarship through the Michigan Dairy Memorial and Scholarship Foundation Inc., at MSU. The \$3,500 scholarship is named in honor of John Dilland, former controller, director of finance and general manager for the Michigan Milk Producers Association (MMPA), and his wife Barbara. The award is presented to an MSU sophomore, junior or senior student majoring in the field of agribusiness management.

Gehring, the daughter of William and Lenai Gehring, received the award based on her academic achievements and involvement in extracurricular activities. She is a junior at MSU pursuing a degree in agribusiness management with specializations in animal science and crop and soil science and expects to graduate in spring 2017.

At MSU, Gehring is a member of the MSU Block and Bridle Club and the MSU Dairy Club. She was active in 4-H, FFA and the National Honor Society in high school.

The John and Barbara Dilland endowed scholarship was established in 2010 by the MMPA upon John's retirement. He held the positions of controller, director of finance and general manager over the course of his 35 years of service to the organization. Besides his involvement in MMPA, he has served in leadership capacities on several national organizations including the National Council of Farmer Cooperatives, the National Milk Producers Federation and the Innovation Center for U.S. Dairy. In Michigan, he served on the board of directors for the Michigan FFA Foundation and the Michigan Dairy Memorial and Scholarship Foundation.



COURTNEY DOAN

Redmond (“Red”) and Edna Cotter Endowed Scholarship

Courtney Doan of Merrill, Mich., was chosen as the 2015-16 recipient of the Redmond (“Red”) and Edna Cotter endowed scholarship through the Michigan Dairy Memorial and Scholarship Foundation Inc., at MSU. The \$4,000 scholarship is named in honor of Red Cotter, an inspirational dairy industry leader and respected motivator of sales and marketing executives, and his wife Edna.

Doan, the daughter of Dean and Cheryl Doan, received the award based on her academic achievements, involvement in extracurricular activities and interest in pursuing a career as a large animal (production animal) veterinarian. She graduated from MSU with a bachelor’s degree in animal science in 2014 and is currently a second year student in the MSU College of Veterinary Medicine (CVM) Production Medicine Scholars Program. Doan aspires to become a production animal veterinarian specializing in dairy cattle and one day own her own practice in Gratiot County. Her primary interests are hypocalcemia, milk quality and calf management.

At MSU, Doan participated as an undergraduate in the MSU Dairy Challenge and the Tri-State Dairy Nutrition Conference and was a member of the Animal Science Undergraduate Research Student Association. She worked as a seasonal employee at Bebow Dairy Farm, an undergraduate research assistant for the MSU Department of Food Science and Human Nutrition and for the MSU Dairy Research and Teaching Center. Doan is a member of the Student Chapter of the American Veterinary Medical Association.

The Redmond (“Red”) and Edna Cotter endowed scholarship honors the Cotter couple and their many contributions to the dairy industry. A 1937 graduate of MSU, Mr. Cotter was employed for 43 years as a sales manager for Ralston-Purina, covering Michigan, Ohio and Indiana. Upon his retirement, he served as a guest lecturer in the CANR. Edna Cotter’s MSU roots stem back to the beginning: she was born on a farm on what is now the MSU Hancock Turfgrass Research Center and she graduated from Michigan State College (MSC) in the 1930’s. She was a generous supporter of the Redmond and Edna Cotter Agribusiness Scholarship Fund, the MSU Intercollegiate Athletics Fund, and the Carrigan Chair for Feline Health in the MSU College of Veterinary Medicine.

JACK AND BETTY BARNES SCHOLARSHIP

Three MSU students have been awarded the Jack and Betty Barnes Scholarship from the Michigan Dairy Memorial and Scholarship Foundation Inc. for the 2015-16 academic year. Silas Bonczyk, food science senior from West Branch, Anne Meyers, animal science senior from Clawson, and Louise Vanderploeg, animal science senior from Ithaca, each received the \$1,000 scholarship earmarked towards completing an international study experience. The students were selected as recipients of the scholarship based on their cumulative academic achievements and involvement in extracurricular activities.

The scholarship is named after the late Jack and Betty Barnes. Jack Barnes was employed with the MMPA for 39 years and served 26 of those years as general manager.



SILAS BONCZYK,

the son of Janice Heuer and Andrew Bonczyk, enrolled in the “Ecology of the Mountains” study abroad program in India during summer

2015. While at MSU, Bonczyk has worked in the MSU dairy processing plant for three years and participated on the MSU dairy product evaluation team. His future career aspirations include cheese-making and dairy sensory studies.



ANNE MEYERS,

the daughter of Renee LeVasseur and James Meyers. She aspires to become a production animal veterinarian. Meyers completed a 10-day study abroad

program to Vietnam in March 2015 called “Emerging Issues and Sustainability in International Agriculture in Vietnam.” While at MSU, she has been involved in the Animal Science Undergraduate Research Student Association, the International Relations Organization and the MSU Model United Nations. She received the American Society of Animal Science Scholastic Achievement Award in June 2013.



LOUISE VANDERPLOEG,

the daughter of Klaas and Mares Vanderploeg, completed a one-month study abroad trip to South Africa in 2015. At MSU, she

is a member of the MSU Dairy Club and competed on the MSU collegiate dairy cattle judging team in 2015. Vanderploeg completed a lab technician internship with NorthStar Cooperative and has worked in the MSU Mastitis Laboratory.

DAIRY MEMORIAL RECIPIENTS

Dairy Memorial Scholarships (\$3,500)

MEGAN AHEARNE is the daughter of Patrick and Rebecca Ahearne. She was highly involved in research, working in the Nutrition Lab at the Diagnostic Center for Populations and Animal Health at MSU, as a research assistant for Dr. Richard Pursley involving dairy cow reproduction, and Dr. Daniel Buskirk examining beef product traceability. Additionally, she has conducted her own research project under Dr. Tom Herdt studying serum calcium stability over time. She has worked with veterinarians and served as the president of the Michigan State Horseman's association and on the fundraising committee and research committee for the Animal Science Undergraduate Research Association.

NATHAN BUNING, son of Norman and Holly Buning, is a recent graduate at MSU, where he majored in agribusiness management. He looks forward to assisting dairy farmers via the agri-finance industry. He grew up on a dairy farm in Falmouth, Michigan and was involved in the management of the cows and farm there and at another local dairy. He interned with Dow Agrisciences in the summer of 2015. His extracurricular activities have included the MSU dairy club, 4-H participation, and the Missaukee County Farm Bureau.

SUZANNA HULL, daughter of Michael and Lori Hull, is a junior at MSU, pursuing a degree in animal science. She expects to graduate in May 2018 and plans a career in dairy nutrition. She was an avid, long-time 4-H member, participating in many projects and events, including dairy judging and quiz bowl, and served in several leadership roles including president, secretary, and teen leader. She served as a representative for the Michigan Junior Holstein Association, 4-H Council, and Hillsdale County Dairy Leaders Committee. At MSU, she is a member of the Dairy Club and served on the Spartan Spectacular Calf Sale sales committee.

CAROLINE KNOBLOCK MSU animal science senior, Caroline Knoblock is the daughter of Joseph and Venessa Knoblock of Ionia. After she finishes her undergraduate studies at MSU, she plans on attending graduate school to study dairy cattle nutrition with an emphasis on protein synthesis and receive a PhD. She then plans on traveling to the Midwest to search for a job in teaching and research at the university level. Caroline has worked at Three Flags Dairy in Iowa and is currently working at the MSU Dairy Farm and MSU Dairy Forage Laboratory. She is a member of the MSU Sigma Alpha Sorority, MSU Dairy Club, and MSU Block and Bridle. She was previously involved with the MSU Varsity Cross Country and Track and Field team, Agriculture Futures of America, and Hartley-Melvin-Sanborn FFA Chapter.

TOREI KULPINSKI MSU junior, Torei Kulpinski, is native to Coldwater and the daughter of Michael and Tara Kulpinski. She is majoring in Animal Science with a concentration in Production Animal Scholars, with hopes of becoming a dairy cattle veterinarian. Torei was a camp counselor at Jr. Vikes in Bronson, MI and is currently an employee at Kulpinski Dairy Farms where she helps with birthing, feeding, herd checks, and farm equipment operation. She is currently involved in MSU Block and Bridle, MSU Dairy Club, and Algansee Farm Boosters

4-H Club, and was the chapter president of both the National Honor Society and Student Council at Bronson High School.

JAMES LUOMA, East Leroy, is the son of Jim and Lori Luoma. He is a senior at MSU studying Animal Science with a pre-veterinary concentration. Jay has been working on his family's dairy farm since 2006, worked as a Vet Assistant at Southside Vet Clinic during the summers of 2008-2013, and was an intern at Green Meadows Farms during the summer of 2014. Jay would like to expand his father's veterinary practice by focusing on dairy cattle and remain active in his mother's dairy farm. He was previously active in the Calhoun County 4-H and 4-H Dairy Judging Teams, and is currently in the MSU Dairy Club, College of Agriculture and Natural Resources Student Senate, and Alpha Gamma Rho Fraternity.

LAURA LUBESKI, daughter of Linda Gucwa and Doug Lubeski of Bad Axe, is a recent graduate at MSU, where she majored in Animal Science. She has been working on her family's dairy farm, Gucwa Farms, for eight years, and plans to continue her time there. Laura was a member of the MSU Dairy Club, assisting with the Fall Cheese Sales and attending the Midwest ADSA Regional Conference in Wisconsin Dells, WI. She also served as a Michigan Dairy Ambassador, where she educated youth about the dairy industry through the Great Dairy Adventure and social media promotions. Lubeski also served as the 1st Runner-up Michigan Bean Queen, where she travelled throughout the state to spread her knowledge of the Michigan dry bean industry to the public.

BRITTNI TUCKER, a senior in the MSU Department of Animal Science Production Animal Scholars Program, is the daughter of Glenn and Joni Tucker of Elsie. At MSU, she is a member of the MSU Dairy Club, participated in the MSU Dairy Challenge and Midwest Regional Dairy Challenge, and was a teaching assistant for ANS 232 Introductory Dairy Cattle Management last fall. Off-campus, she has been a 4-H member since 2002 and acquired work experience through roles at MSU's AgBio Research, Thelen Farms in Fowler, Webster-Ridge Dairy in Elsie, Breakfast on the Farm in Langlade County, Wis., and the Lion's Club.

MARIN WESTERN, a MSU junior studying Animal Science, hails from Croswell, MI. She is the daughter of Ken and Julie Western. Marin has held employment at BMQ Sweet Corn and Lawn Mowing, Lexington State Harbor, MSU Recycling Center, and Lamb Dairy Farm, and is currently working at the Dairy Cattle Nutrition Lab at MSU. Here she is an undergraduate research assistant, helping with various dairy cow nutrition studies by collecting samples of feed, fecal, blood, milk, and rumen fluids and analyzing milk fatty acids. Marin is involved in the MSU Rise Program, MSU Dairy Club, MSU Student Organic Farm, and Ingham County Animal Shelter and was previously an MSU Dairy Challenge participant, Greening of Detroit volunteer, and AYSO Soccer Referee. After graduation, Marin hopes to work in the Dairy Nutrition field with an Extension program to help educate people in her community about the dairy industry.

Freshman Scholarships (\$1,500)

JARED SANDERSON is a first-year student at MSU studying animal science. He is the son of Michael and Pattie Sanderson. Sanderson has previously worked as a farm hand at Welter Dairy Farm in Croswell, MI. He earned his leadership experience through Boy Scouts, where he was a Senior Patrol Leader and orchestrated a landscaping Eagle Scout project, and Food 4 Friends, an organization that collected donations to purchase food for community families. He also participated in the Sanilac County 4-H and Sandusky High School National Honor Society. Jared is currently a member of the MSU Dairy and MSU Block and Bridle Clubs. After graduation, Jared plans on becoming a veterinarian and having a private practice or working in a lab doing dairy research.

CHARLEY MCALVEY, of Owosso, is a first-year student studying animal science at MSU. She holds an associate's degree in accounting from Baker College, and was heavily involved in 4-H, particularly in dairy quiz bowl and management teams as a member and captain. She has worked on dairy farms and as a milk technician, and as an accounting intern. She plans to pursue a career as a large animal veterinarian after graduation.

SHELBY BERENS, of Holland is a first-year student in the MSU Institute of Agricultural Technology dairy management certificate program. She was an active member of FFA, which she served as the president of the Careerline Tech Chapter and received the FFA State Degree. She was also very involved in 4-H, serving as club president, youth council representative, and teen leader, and participating in dairy judging and quiz bowl. She currently works on J&D Brenner Farms, a 700 cow dairy. Her goal is to become a large animal veterinarian, specializing in dairy cattle.

ERICA DRAKE, of Ann Arbor, is a first-year student in the MSU Institute of Agricultural Technology dairy management certificate program. She was an active 4-H and FFA member,

showing sheep, dairy feeders, and beef, and participating in dairy judging and dairy quiz bowl. She also served as club president and vice president. Erica is a member of MSU Dairy Club and she aspires to become the owner and operator of the dairy farm where she grew up.

TYLER CAPPAERT of Stephenson is a sophomore studying agribusiness management at MSU. A longtime 4-H member, and a very active FFA member, he has participated in many project areas, including horses, swine, veterinary science, dairy foods, parliamentary procedure, and natural resources. He served as FFA president for three years, and senior class vice president, and has been very involved in community service. He worked on his family's dairy farm and wishes to pursue a career in sales, marketing, or management in an agricultural company.

LIBBY VENEMA of Deford is a sophomore studying animal science at MSU. She served as class representative and treasurer for her high school student council, was an enthusiastic 4-H member, and is involved in MSU Dairy Club, MSU Block and Bridle, and MSU Collegiate Farm Bureau. Additionally, she has served as a Michigan Dairy Ambassador, MMPA/4-H Milk Marketing Tour Chairperson, and represented Michigan at the National 4-H Dairy Conference in Madison, WI. Libby works as a student research assistant on dairy projects and as a clerical assistant and farm hand on a 100-cow dairy operation. She aspires to become an agricultural lawyer.

MASON SMITH is the son of Brad Smith and is beginning his first year at MSU. Mason graduated from Homer High School, where he was active in the Homer FFA Chapter and National Honor Society, played Varsity Football, and ran Track and Field. Mason is in the 2-year Agricultural Technology Dairy Management Program. After his time at MSU, he plans to work on his family dairy farm with his brother and expand their milking operation.

Ag Tech Scholarships (\$2,000)

AMBER IDEN of Bad Axe graduated from the MSU Institute of Agricultural Technology Dairy Management certificate program in December 2015. She has worked for Five Star Dairy, Pine Row Dairy, Highland Dairy, and Aquila Farms, where she was responsible for a variety of positions and tasks including calf care, reproductive work, milking, and shift manager. Her goal was to become a herd manager.

CARA PERKINS of Hudson, Indiana graduated from the MSU Institute of Agricultural Technology Dairy Management certificate program in December 2015. She served as Vice President, Treasurer, and Reporter of her FFA chapter, and as President of her 4-H club. Additionally, she was a member of the LaGrange County Extension Board for three years. She was also an active member of MSU Dairy Club, where she assisted with cheese packaging and sales, the winter calf sale, and Spartan Spectacular. After graduation, she planned to go back to her family's feed mill.

DAVID KRAFFT of Frankenmuth graduated from the MSU Institute of Agricultural Technology Dairy Management certificate program in December 2015. He holds an associate's degree in heavy equipment technology from Ferris State University. David

works on his family's dairy farm and is an active volunteer for St. Lorenz Church. He planned to expand his family's dairy after graduation.

SETH HULST of Coopersville will graduate in December 2016 from the MSU Institute of Agricultural Technology Dairy Management certificate program. He was an active 4-H participant, showing dairy cattle and competing in management contests, and serving as club President and Vice President. He was also a member of the Berlin Fair Board. He worked at Long Lane Dairy Farm and was responsible for many aspects of cow management there. He plans to return there as herdsman after graduation.

RACHEL EKKELE of Fremont will graduate in December 2016 from the MSU Institute of Agricultural Technology Dairy Management certificate program. She was an active FFA member, serving as the chapter Vice President, received her Michigan FFA State Degree, and continues to serve as an active alumnus. She manages her own farm of registered Jerseys as well as works with her parents' dairy. She plans to return to the farm and continue developing her herd.

Dairy Judging

Michigan 4-H and the Michigan State University (MSU) Ag Tech and collegiate dairy cattle judging programs participated in several national competitions in 2015.

The MSU collegiate dairy cattle judging team members competed in three national competitions in 2015: the 47th annual All-American Invitational Youth Dairy Judging Contest in Harrisburg, Penn.; the 95th annual World Dairy Expo Dairy Cattle Judging Contest in Madison, Wis.; and the 42nd annual North American International Livestock Exhibition (NAILE) in Louisville, Ky. Team members were: Allison Pung, Laura Lubeski, Kelly Raterink and Louise Vanderploeg.

Four second-year MSU Institute of Agricultural Technology dairy production management program students competed in the 2015 International Postsecondary Dairy Cattle Judging Contest held during World Dairy Expo in Madison, Wis., and the 42nd annual North American International Livestock Exhibition in Louisville, Ky. Team members were: Amber Iden, Kayla Holsten, Nicole Chase and Dane Anter.

Representing Michigan on the 4-H dairy cattle judging teams in 2015 at the Annual All-American Invitational Youth Dairy Judging Contest in Harrisburg, Penn., and the National 4-H Dairy Cattle Judging Contest held at the World Dairy Expo in Madison, Wis., were: Shelby Berens, of Holland (Madison); Rachel Ekkel, of Fremont (Madison); Lance Frahm, of Frankenmuth (Harrisburg and Madison); Josh Markel, of St. Johns (Harrisburg); Lauren Heberling, of Carsonville (Harrisburg); and Evelyn Okkema, of Blanchard (Harrisburg and Madison).

All three teams were coached by Dr. Joe Domecq.



The Michigan 4-H dairy cattle judging team placed first overall and first in oral reasons at the 2015 North American International Livestock Exhibition dairy cattle judging contest in Louisville, Ky. Pictured left to right are: Allison Schafer, of Westphalia; Skylar Buell, of Ida; Cameron Cook, of Pewamo; Madeline Meyer, of Ionia; and Dr. Joe Domecq.

Celebrate Dairy Leaders with the Gift that Keeps Giving

Name an MDMSF Honoree

One of the ways the MDMSF grows its endowment fund is through the honoring of individuals for their distinguished service to Michigan's dairy industry. More than 180 individuals have been named MDMSF Honorees since the foundation's establishment over 50 years ago.

A gift of \$1,000 or more to the MDMSF provides permanent recognition and honors a dairy leader for their service and contributions to the dairy industry. Foundation honorees receive personal recognition from the foundation and their names are inscribed on a plaque in Anthony Hall at MSU and honoree biographies and photographs are kept in permanent records in the MSU Department of Animal Science. In addition, photographs of MDMSF Honorees are now on display at the MSU Pavilion.

The items needed for naming an MDMSF Honoree include: a \$1,000 contribution to the MDMSF, an 8 X 10 photo of the honoree and a one page biography on the honoree. Many times the presentation to an MDMSF Honoree is given at an industry or MDMSF event. At other times, an individual is honored posthumously for their service to the industry by making a presentation to the deceased honoree's family.

By honoring individuals through the MDMSF, donors are not only recognizing individuals for their accomplishments in the industry, but they are also investing and providing support to future dairy leaders. As the foundation endowment grows, additional scholarships can be awarded. With the increasing cost of higher education, scholarships often make the critical difference in the lives of students, enabling them to achieve their dreams for the future.

Naming someone as a MDMSF Honoree is a fitting tribute for recognizing someone who has served this great industry of ours.

If you are interested in honoring someone through the MDMSF contact:

- Any MDMSF board member
- Dr. Miriam Weber Nielsen at 517-432-5443 or [mws@msu.edu](mailto:mw@msu.edu)
- CANR Development office at 517-355-0284

MAKING DONATION FROM IRA SAVES TAXES

BY MATTHEW HATCH, CPA

SENIOR ACCOUNTANT IN THE AUDIT AND TAX DEPARTMENT AT NIETZKE AND FAUPAL, P.C.

The IRS allows IRA owners who are 70 ½ years of age or older to make qualified charitable distributions up to \$100,000 to an eligible organization. There are a number of potential tax advantages for individuals who qualify to make these donations:

1. Qualified charitable distributions (QCDs) provide benefits for qualified individuals in many ways. When the owner of an IRA reaches the age of 70 ½, they are required by the IRS to start taking a required minimum distribution (RMD) from the IRA even if they do not need the income. RMDs are calculated based on age and the amount of funds in the IRA that have been contributed tax-deferred, and are, therefore, included in that individual's adjusted gross income (AGI). The result of this increase in AGI can have many negative impacts on individuals who do not require the extra income. These include:

- A.** Increase of income taxes on social security benefits
- B.** AGI limitations of itemized deductions
- C.** Increase of Medicare premiums

Making QCDs will help individuals meet the RMD requirements and avoid the forementioned results.

2. Donating the IRA distribution will also help taxpayers lower their AGI, depending on how much they choose to donate. The amount of QCD is deductible on Schedule A of Form 1040 and, depending on the amount of itemized deductions along with the QCD, the taxpayer would be able to reduce his AGI by more than the standard deduction. The standard deduction for a married couple filing a joint return for 2016 is \$12,600. However, if the taxpayer chooses to make a QCD, but their amount of itemized deductions on Schedule A does not exceed the allowable standard deduction, the cash contributions would not be deemed "wasted" if the individual was required to take a RMD but did not need the distribution. This is very beneficial for retirees who contributed income to a Traditional IRA tax-deferred, and ultimately would be able to avoid picking up the taxable income in their AGI, and able to take the deduction.

3. In order to make a QCD from an IRA, an individual must meet certain requirements. They must be 70 ½ years old in order to make a distribution from their IRA without penalty. The QCD must be a direct transfer by the IRA trustee to an organization that qualifies for a charitable income tax deduction.

The tax rules regarding the donation of qualified charitable distributions have some very specific requirements, so be sure to consult with your tax advisor before making a QCD for the first time.

.....

FORMER MDMSF SCHOLARSHIP RECIPIENTS... *What are you doing now?*

The MDMSF is developing a list of the various occupations in which former scholarship recipients are now involved. Please help us update our scholarship recipient records by completing the form below and returning it to Dr. Miriam Weber Nielsen.

Name: _____

Address: _____

Home Phone (optional): _____

Email (optional): _____

Major(s): _____

Degree(s), year(s) graduated : _____

Current occupation (title or position, employer name and location): _____

Mail, fax or e-mail to Dr. Miriam Weber Nielsen at: Department of Animal Science, MSU, 2265 Anthony Hall, 474 S. Shaw Lane, East Lansing, MI 48824-1225 / Fax: 517-353-1699 or email: msw@msu.edu

THANK YOU LETTERS

Thank you for awarding me the Jack and Betty Barnes Scholarship for my study abroad experience. I couldn't be more thrilled to travel to Europe and learn about their dairy industry through my program! It's truly going to be a once in a lifetime opportunity and I'm very grateful for this scholarship. I appreciate all the support the Michigan Dairy Memorial and Scholarship Foundation has given me over the years!

- Kelly Raterink

It is an honor to receive a Michigan Dairy Memorial Scholarship and the Jack & Betty Barnes Scholarship. Thank you to all of the generous donors and board members for giving me the honor of receiving these scholarships. I also want to thank all who have, and all who are still contributing to, the Michigan dairy industry, making it one of the best in the nation. Due to your generosity, students like myself are able to afford an education and take all the opportunities that Michigan State provides, such as the dairy husbandry study abroad I will be attending in the summer 2016.

I have found a love and enjoyment in being a part of the Michigan dairy industry because it has given me many opportunities and experiences that have guided me towards my future career, and I look forward to being in the dairy industry for years to come. I hope to pay back and strengthen it so that future students can benefit from it like I have.

I understand that it takes a lot of time and effort to make this scholarship foundation possible, and I want to say thank you again for your generosity and for giving me the privilege to receive these prestigious scholarships. I greatly appreciate it.

- Jared M. Sanderson

I want to extend my deepest thanks for being chosen as a recipient of one of the Michigan Dairy Memorial scholarships. I love the sense of community that surrounds the dairy industry and this foundation exemplifies that connection.

This scholarship will help with expenses as I continue my education in Animal Science at Michigan State University. I will be entering my junior year this fall, and once I complete my bachelor's degree, I hope to attend veterinary school. My ultimate goal is to enter private practice as a large animal veterinarian with a focus in dairy herd health.

My heart lies in the dairy industry, and I'm grateful for scholarships like this one that allow me to pursue that passion. I'm honored to be a recipient and plan to represent the foundation well.

- Hailey Sharrard

I am writing to thank you for your generous Dairy Memorial Scholarship. I was very happy and appreciative to learn that I was selected as the recipient of your scholarship. The scholarship really means a lot to me and I would like you to know that your contribution will be put to good use in investing in not only my future, but the future of the dairy industry.

By awarding me the Dairy Memorial Scholarship, you have lightened my financial burden which allows me to focus more on the most important aspect of school, learning. Your generosity has inspired me to help others and give back to the community. I hope one day I will be able to help students achieve their goals just as you have helped me.

- Jorin Ouwinga

Thank you very much for the generous scholarship through Michigan Dairy Memorial. I am currently a second year student in the Michigan State Dairy Tech Program. The dairy industry has always been something very close to my heart. I was raised on a small family farm in Grand Rapids were I still continue to farm with my dad and brother. Being part of Michigan's dairy industry is a very special experience that allows me to be amongst so many industry enthusiasts. After school I plan to go back and work on our family farm with hopeful plans of expansion in the near future.

This scholarship was a blessing to me this year. I am very thankful that there are programs out there such as Michigan Dairy Memorial Scholarship that make it possible for the future of our state's dairy men and women to go to school and get an education in the field they are passionate in.

I would like to express my greatest gratitude again to Michigan Dairy Memorial, Michigan Milk Producers, and all others who made it possible for me to obtain this scholarship.

- Paul Dunneback

I would like to thank the Michigan Dairy Memorial Scholarship Foundation for choosing me as a recipient of the 2015-2016 Michigan Dairy Memorial Scholarship. Receiving this scholarship allows me to worry less about my financial obligations as I am obtaining my degree and focus more on getting the most out of my education at MSU. I am able to take advantage of the many opportunities available on campus both in the classroom and through extracurricular activities to build on my knowledge of the dairy industry. I plan to return home to our family dairy farm after graduation and am proud to be a part of the fourth generation to be actively involved in it. I look forward to my final year at Michigan State and hope to get the most from it and this scholarship greatly helps to makes that possible. Thank you again!

- Laura Lubeski

Thank you all so much for choosing me as one of the recipients of this amazing scholarship. I am extremely honored that you thought I was deserving of this award, and intend to use it to further my education and accomplish the goals I have set for myself. The dairy industry has always held a special place in my heart, and I am excited to be able to continue my education at Michigan State to further that passion. Again, thank you all so very much, and go green!

- Ellen Launstein

I thank you for choosing me as a recipient of a Michigan Dairy Memorial scholarship. Your support will help me complete my undergraduate degree and pursue my goal of a Master's and Doctorate in the area of dairy nutrition and metabolism. I hope that the students I will someday advise will have opportunities such as these.

- *Caroline Knoblock*

To begin, I cannot put into words how excited I am to have received this scholarship. The impact this will have on my education is tremendous, as it helps to ensure the continuation of my experience here at Michigan State, and for that I am truly indebted to you all.

After completing my Dairy management Program here at Michigan State I plan to return to the dairy and begin the process of modernizing certain aspects of the farm. I would like to make the dairy a model of cow comfort and additionally, would like to ensure that the carbon footprint of our dairy is decreased through the implementation of environmentally sound practices primarily concerning nutrient

management and the inputs into the dairy to ensure the continuation of our dairy and the agricultural industry for generations to come.

Again, I am so grateful to you all for the availability of this scholarship and additionally I hope that I have successfully expressed my gratitude in receiving it! Furthermore, with the help of this scholarship in continuing my education I will be able to apply the knowledge which I have gained and to make the industry we all love a better one. I find it truly an honor to have been selected by such a highly regarded organization to receive a scholarship!

- *Seth Hulst*

I received a scholarship for the 2015 fall semester at Michigan State University and I would like to express my gratitude to the Dairy Memorial Scholarship foundation for the generous scholarship. My education at MSU has allowed me to learn more about my passion in the dairy industry and I know that I will go on to achieve many great things with the

knowledge I have acquired. I have worked hard to send myself to school, and I am so appreciative of the help this scholarship gave me. To all whom it may concern on the committee, thank you.

- *Amber Iden*

Thank you for giving me the time and opportunity to interview for the Michigan Dairy Memorial Scholarship. I feel honored to be chosen as one of the recipients for the 2015-2016 academic year. Not only will this scholarship make an impact financially as I continue my education here at Michigan State University, but it makes me feel proud that I can be recognized by an industry that I am so passionate about, an industry I will contribute to one day. Once again, thanks to all at the Foundation.

- *Torei Kulpinski*

WHAT ARE THEY DOING NOW?

Abigail (“Gail”) Carpenter, Ridgetown, Ontario, Canada

Animal Science B.S. Degree, 2010, MSU; M.S. Degree, 2012, University of Minnesota; Ph.D Kansas State University, 2015.

Current Occupation: Assistant Professor, University of Guelph, Ridgetown Campus

Kelsey Sabol (Byars), Clio, MI

Animal Science with a Minor in Agronomy, B.S. Degree, 2013

Current Occupation: Administrative Assistant, Bentley Manor Adult Foster Care & Senior Assisted Living

“I am not working directly in the field of ag; however, I still have a passion for cows, agriculture, and MSU. I live in an area where people are not as familiar with farming practices, and I love getting to share with coworkers and other people in the community why farmers do things the way they do!”

Clayton (CJ) Berens, Portland, MI

Dairy Management, Ag Tech Degree, 2015

Current Occupation: Reproductive Specialist for ABS Global, Inc., mid-Michigan

Kristy Daniels, Blacksburg, VA

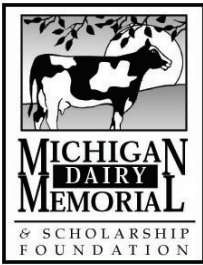
Animal Science, B.S. Degree, 2002

Current Occupation: Assistant Professor, Dairy Science Department, Virginia Tech

Cora Watts, McBain, MI

Animal Science, B.S. Degree, 2015

Current Occupation: Feed Specialist working with both dairy and beef nutrition at Falmouth Cooperative Co. in Falmouth, MI



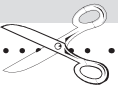
Michigan Dairy Memorial and Scholarship Foundation

Michigan State University
Anthony Hall, Room 2265
474 S Shaw Ln
East Lansing MI 48824

Non-Profit Org.
U.S. Postage
PAID
East Lansing, MI
Permit No. 21

Please make checks payable to Michigan State University, designate for MDMSF and forward with this completed form to:

Dr. Miriam Weber Nielsen
Michigan Dairy Memorial and Scholarship Foundation
Department of Animal Science, Michigan State University
Anthony Hall, Room 2265
474 S Shaw Ln
East Lansing MI 48824



Contributions to MDMSF (A10901)

Appeal Code 01034

Enclosed is my total contribution of \$ _____ OR

Enclosed is my initial contribution of \$ _____

Please send me pledge reminders:

_____ annually _____ semi-annually _____ quarterly

Name: _____

Address: _____

Home Phone: _____ Email: _____

Please Send Me More Information on:

- A personal visit or other assistance
- MDMSF Honoree Recognition
- Joining MSU donor recognition clubs

