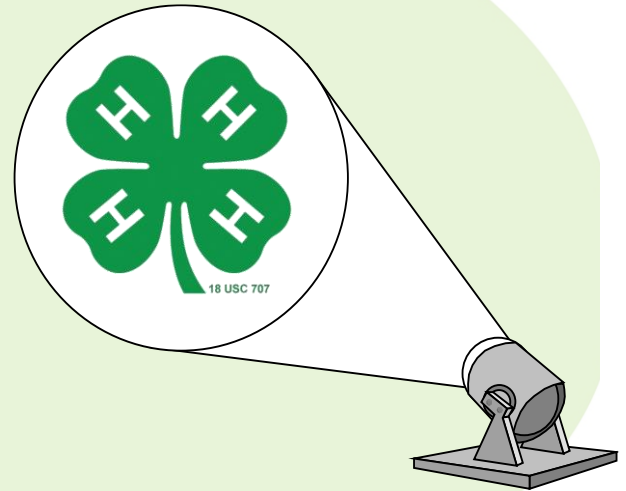


Berrien County 4-H Spotlight

Upcoming MSU Extension Office Closures

The Berrien County MSU Extension Office will be closed on the following days. Please arrange for any pickup or drop offs prior to these dates.

- November 17, 2023
- November 23 – 24, 2023
- December 22 – 31, 2023
- January 1 – 2, 2024



Volume 27 Issue 2

November – December 2023

Spotlight Table of Contents

2	County News and Events
3	Countywide Projects & Kits to Go!
4	Leaders Council Election
5	Thanks 4 Giving Service Project
6	MSU Extension Listening Sessions
7 – 9	Recognition Celebration
10	Michigan 4-H State News & Upcoming Events
11	Michigan 4-H License Plate

MSU is an affirmative-action, equal-opportunity employer, committed to achieving excellence through a diverse workforce and inclusive culture that encourages all people to reach their full potential. Michigan State University Extension programs and materials are open to all without regard to race, color, national origin, gender, gender identity, religion, age, height, weight, disability, political beliefs, sexual orientation, marital status, family status or veteran status. Issued in furtherance of MSU Extension work, acts of May 8 and June 30, 1914, in cooperation with the U.S. Department of Agriculture. Quentin Tyler, Director, MSU Extension, East Lansing, MI 48824. This information is for educational purposes only. Reference to commercial products or trade names does not imply endorsement by MSU Extension or bias against those not mentioned.

CONTACT US

**Berrien County MSU
Extension Office**
1737 Hillandale Road
Benton Harbor, MI 49022

Office Hours:
Monday through Friday
8:30 a.m. – Noon
1:00 p.m. – 5:00 p.m.

Phone:
269-927-5674

Fax:
269-944-4128

Email:
msue.berrien@county.msu.edu

Website:
http://msue.anr.msu.edu/county/berrien/berrien_county_4_h

COUNTY NEWS AND EVENTS



World's Finest Chocolate Fundraiser



The Annual Fall Fundraiser is in full swing. Thank you to all the clubs that have participated in selling World's Finest Chocolate Candy Bars. Reminder to clubs that sold World's Finest Chocolate Candy Bars, that the deadline for **ALL money to be turned in by December 4, 2023**. Checks can be either mailed to 1737 Hillandale Road, Benton Harbor, MI 49022; dropped off during office hours or through the after-hours mailbox. A Club's portion of the candy bars profits cannot be distributed until all money owed by the club is submitted. **Checks should be made payable to: Berrien County 4-H Leaders Association, Inc.**

For questions, issues or concerns related to the candy bar sale, please contact Fundraising Chair, Chelsey Sobraliski-Cole at sobraliski.c@gmail.com or via phone at 269-487-8279.

Club Financial Bank Statements Due



This is a friendly reminder that the deadline to submit Club Bank Statements for December 31 statements are due on January 12, 2024. All Clubs must submit their bank statement or be subject to an audit.

Statements can be:

- Mailed to 1737 Hillandale Road, Benton Harbor, MI 49022
- Dropped off at the afterhours drop mailbox out front
- Faxed to 269-944-4128

Please note, clubs that already have their statements mailed directly to the Berrien County MSU Extension Office on monthly/bi-monthly basis may disregard.

Enrollment Deadline Approaching



4-H Online is now open for 4-H new year enrollments! Login today to submit your annual enrollment.

2023 – 2024 deadlines are as follows:

- January 1 – Returning Member Re-enrollment deadline
- June 1 – New Member deadline

Paper accommodations available upon request to the Berrien County MSU Extension Office at 269-927-5674 or can be found online at: https://www.canr.msu.edu/berrien/berrien_county_4_h/enrollment

Enrollment forms must be on file by the deadline dates listed above to be eligible for project complete, awards, scholarships, etc.



COUNTY NEWS AND EVENTS



Upcoming Countywide Projects & Kits

Registration is now open for countywide projects and project exploration kits. Registration can be done through 4-H Online at: <https://v2.4honline.com/#/user/sign-in> and logging into your family profile. Once logged in you can find all workshops and kits in the event section of your profile! Pre-registration is required, and workshops are limited on a first come, first serve basis until full regardless of participation via self paced or in-person. All supplies are included unless noted during the registration process. Club Leaders may request Kit to Go's for their membership by directly contacting the Berrien County MSU Extension office at 269-927-5674.

4-H Countywide Project Workshop

Project Topic – Jewelry & Card Making

- Date: December 12, 2023
- Time: 6:00 PM – 7:30 PM EST
- Location: Berrien County MSU Extension Office
- Who: Open to youth ages 5 – 19 years as of January 1, 2023

4-H Kit to Go! Barn Quilt Adventures

Explore the history of barn quilts in this at-home self-paced kit. Participants will create their own barn quilt coasters.

- Date: Open December 2023
- Who: Open to youth ages 5 – 19 years as of January 1, 2023, Clubs & 4-H Leaders

Registration set to open in November 2023

4-H Kit to Go! – 100% Cocoa

Over the course of the kit, participants will get the opportunity to explore the world of chocolate from its origins in the ancient world, to some of the great innovators in chocolate history and to the chocolate industry of today and get to sample some fantastic chocolate in the process from around the world. This kit also contains supplies for chocolate candy making.

- Date: Opening in January 2024
- Who: Open to youth ages 5 – 19 years as of January 1, 2023, Clubs & 4-H Leaders

Registration set to open in December 2023

****Allergen Alert – Dairy, Soy, & Gluten**

4-H Countywide Project – Clover's 'N' Hearts Charcuterie

During this countywide project, learn what a charcuterie board is, what elements go into making a board, selecting healthy ingredients, food safety tips and what foods pair well together. Participants will leave with a delicious charcuterie board.

Date: February 11, 2024

Time: 2:00 p.m. – 3:30 p.m.

Location: Berrien County MSU Extension Office

Who: Open to youth ages 5 – 19 years as of January 1, 2023 & 4-H Leaders

Registration set to open in January 2024

****Allergen Alert – Dairy, Soy, & Gluten**

4-H Kit to Go! – Mad with Love

Bring your Valentine's Day cards to life in this month's kit to go focusing on STEM. From light up cards to invisible ink, try your hand at adding a bit of science to fizz up your Valentine's Day.

- Date: Opening in February 2024
- Who: Open to youth ages 5 – 19 years as of January 1, 2023, Clubs & 4-H Leaders

Registration set to open in January 2024



COUNTY NEWS AND EVENTS



Berrien County 4-H Foundation

A message from The Berrien County 4-H Foundation to our 4-H Friends and Families

Do you know that 4-H is the largest youth development organization in Michigan? Thousands of young people explore new interests and discover their passion through 4-H hands-on, experiential learning opportunities in science, healthy living and civic engagement. Perhaps you were one?

In the past year, one out of every 12 youth in Berrien County has participated in a 4-H program. These programs are backed by a community of 4-H volunteers and professionals. The Berrien County 4-H Foundation raises funds for our county 4-H.

This "Giving Tuesday," (or any time really) please help to reach even more youth. Your contribution, no matter what \$ amount, supports the growth of current and future leaders, youth who are confident and strong, curious enough to question and capable enough to find the answers, youth who stick to a job until the job gets done.

It's easy to donate via The Berrien County 4-H Foundation Facebook home page, or if you prefer, by mail to The Berrien County 4-H Foundation, 1737 Hillandale Road, Benton Harbor, MI 49022.

4-H Leaders Council Annual Election

The Leaders Council Annual Elections are now under way! This year, adult leaders and teen members are encouraged to practice responsible citizenship by casting their ballot.

Adults will vote for four adults and teen members will vote for one teen. Ballots are sent via mail to eligible voters. If you have not received your ballot, please contact the Berrien County MSUE Office. Ballots must be returned by 5:00 PM on November 15, 2023, either via fax, mail or drop off. This year's 2023 Leaders Council Candidates are:

Adult Candidates for 3 Year Term

Bobbi Lawson
Karey Sebasty
Melissa Richards

Adult Candidates for 1 Year Term

Katrina Schneider

Teen Leader Candidates for 2 Year Term

Aiden Conley
Lauren Lovell

Save the Date: 4-H Exploration Days

June 19 – 21, 2024
Michigan State University

This MSU precollege program welcomes youth ages 12-19 to explore their future, try new things and experience college life! During this three-day event, youth will gain confidence and independence through hands-on learning and make friends for a lifetime.

There'll be more than 100 session choices held on and off campus. You'll live in a Michigan State University dorm and eat in the cafeteria—just like MSU students do. Sessions are taught by people who know their stuff, including MSU faculty members, 4-H volunteers and staff members and other experts.

Registration packets and county scholarship information will be available in March!

Annual County Curriculum Order Taking new projects!

Need a Member Record Book?
Leveling Up in your project?
Need a new project book?

Don't waste time!
Reach out to your local 4-H Project Leader on what resource books you need as we look towards kicking off the new 4-H year!

This year's countywide curriculum order is scheduled to be placed on January 1, 2024. Club Coordinator & Project Leaders can submit their requests for member & leader resources by contacting the Berrien County MSU Extension Office When requesting please include:

- Club Name
- Resource Name(s)
- # needed





THANKS



GIVING DINNER

Berrien County Farmers!

Provided by Berrien County Farm Bureau and the Berrien County 4-H Clubs

WHAT: The partnering organizations will provide Thanksgiving Dinner ingredients in a basket for needy families. Each basket will be packed with the following ingredients:

- 1 Turkey
- 1 Package of dinner rolls
- 1 Pumpkin Pie
- locally grown apples
- 1- lb of butter
- 1- gallon of milk

We ask each participating 4-H Club to supply the following for each box:

- 1- 3 lb bag of potatoes
- 1- 15 oz. can of sweet potatoes
- 1- 14 oz. can of cranberries sauce
- 1- 6 oz. box of stuffing
- 1 - 87 oz. packet of dried gravy mix or a jar of gravy
- 1 - 15 oz. can of green beans
- 1 - 15 oz. can of corn

COLLECTION: All food items are to be dropped off to the Berrien County MSU Extension Office (1737 Hillendale Road, Benton Harbor, MI 49022) starting on Monday, November 13 through Friday, November 17, 2023 by Noon. No exceptions! 4-H clubs with more than 3 baskets of food, we encourage to please call ahead at 269-927-5674. No food items should be dropped off to the Berrien County Farm Bureau or Berrien County Youth Fair.

ASSEMBLY: The assembly day will be Saturday, November 18, 2023 at 10 a.m. Assembly is tentatively scheduled at the Berrien County Youth Memorial Building located at 9122 US Hwy 31, Berrien Springs, MI 49103. Distribution of baskets will be from 10:30 a.m. to Noon.

Each 4-H club will have the opportunity to select the family or families that will receive their box or boxes. There will be a maximum of **125 baskets available**. *If your club needs help in identifying a needy family, please contact your local 4-H Program Coordinator. RSVP your intent to participate to Kelly Stelter, 4-H Program Coordinator by Sunday, October 15, 2023 by calling 269.927.5674 ext. 4015; email at grandtke@msu.edu or texting 217-820-5021.

Each 4-H club that participates will be entered in a drawing to receive one of three \$100 cash prizes to be used for your club activities.



Help Berrien County Farmers share the bounty with those in need!

MSU Extension Public Listening Sessions

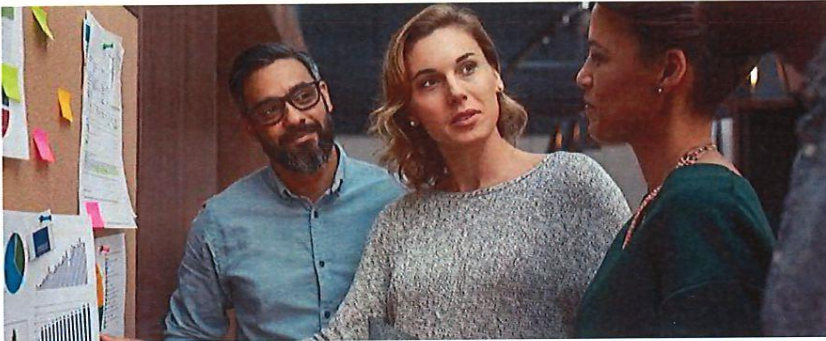


Photo: iStock.com

We Want to Hear from You!

MSU Extension is committed to serving communities, individuals, and businesses alike in every one of Michigan's 83 counties, where our dedicated staff provide people with educational programs and essential tools for their personal and professional growth. *But we can't do that without hearing directly from the people we serve.*

MSU Extension is holding a series of public listening sessions across the state. Through these sessions, we hope to gather input to determine where the organization is, what we do well, and where there are opportunities for improvement. This feedback will be used to help shape MSU Extension's priorities and service for years to come.

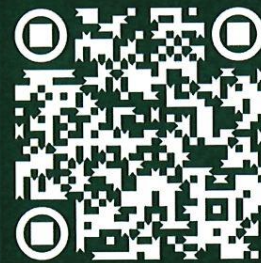
Everyone is welcome and encouraged to attend - youth, parents, community and statewide partners, all MSU Extension-affiliated faculty and staff, and curious community members. Whether you've used MSU Extension services for years or not at all, you can play a part in helping shape the services and offerings in your community in the future.

What to Expect

Each listening session will begin with a welcome from MSU Extension leadership and staff. Then, participants will be divided into two groups - external participants and partners will gather in one room, and MSU Extension faculty and staff will gather in another. In each of these rooms, participants will be invited to share their perspectives and insights through a series of facilitated activities. Finally, common themes heard from participants will be identified and reflected to the entire group for each activity. Light refreshments will also be available.

Learn more and register:

extension.msu.edu/listen2023



Locations:

Nov. 28 - Detroit

Nov. 28 - Troy

Nov. 29 - East Lansing

Dec. 11 - Marquette

Dec. 12 - Grayling

Dec. 13 - Frankenmuth

Dec. 14 - Muskegon

Dec. 18 - Kalamazoo

MSU is an affirmative-action, equal-opportunity employer, committed to achieving excellence through a diverse workforce and inclusive culture that encourages all people to reach their full potential. Michigan State University Extension programs and materials are open to all without regard to race, color, national origin, gender, gender identity, religion, age, height, weight, disability, political beliefs, sexual orientation, marital status, family status or veteran status. Issued in furtherance of MSU Extension work, acts of May 8 and June 30, 1914, in cooperation with the U.S. Department of Agriculture. Quentin Tyler, Director, MSU Extension, East Lansing, MI 48824. This information is for educational purposes only. Reference to commercial products or trade names does not imply endorsement by MSU Extension or bias against those not mentioned.

COUNTY NEWS AND EVENTS



Clover Years of Service Awards

5 Years—Silver

Jean Mcclvenny
Kendell Casey
Jeremy Lawson

10 Years—Gold

Brian Haynes

15 Years—Pearl

Lisa Mattson

20 Years—Diamond

Chris Hampton
Bobbi Lawson
Stephanie Kirk

25 Years – Emerald

Tom Rossman
Lisa Rossman
Margie Hojara-Hadsell
Lynne Siemon

30 Years – Ruby

Barb Lenhardt

35 Years—Sapphire

Janece Rockey
George Rockey

40 Years – Gold

Tami Gear

55 Years – Emerald

Karen Kietzer

2023 Berrien County 4-H Member & Leader Recognition

The Berrien County 4-H Youth Program proudly presented the 2023 Berrien County 4-H Member & Leader Recognition on Sunday, November 5, 2023, at the DANK in Benton Harbor, MI. We would like to make everyone aware of the top awards given out. The program and awards were sponsored by both the Berrien County 4-H Leaders Association, Inc. and the Berrien County 4-H Foundation, Inc.

Berrien County 4-H Alumni Scholarship Award

The Berrien County 4-H Alumni Scholarship is awarded annually to a Berrien County 4-H alumni who has completed 5 years of membership including their senior year of high school, maintained a GPA of at least a 2.8 or higher, interviewed with the selection committee and submitted 3 letters of recommendation. Recipients received a \$700.00 scholarship towards their continuing education.

Samantha Rydwelski – Tryon 4-H Saddle Club

Madeline “Claire” Stockman – Tryon 4-H Saddle Club

Joseph Cerny & Evelyn Cerny Memorial Scholarship

The Joseph Cerny & Evelyn Cerny Memorial Scholarship is awarded annually to a Berrien County 4-H alumni who has completed 5 years of membership including their senior year of high school, maintained a GPA of at least a 2.8 or higher, interviewed with the selection committee and submitted 3 letters of recommendation. Recipient received a \$1,000.00 scholarship towards their continuing education. Scholarship is sponsored by the Cerny Family.

Evie Clare – Great Expectations 4-H Club & Baroda Bunnies 4-H Club

4-H Equine Educational Activity Scholarship

The Berrien County 4-H Horse Leaders Association, annually awards one or more scholarships, for a minimum of \$500.00 to an alumni of the Berrien County 4-H Horse & Pony project. Please review the requirements carefully.

Evie Clare – Great Expectations 4-H Club & Baroda Bunnies 4-H Club

All-Achievement Award

The All-Achievement Award recognizes member's leadership and experience within a project area that they have completed for at least four years. Youth are only able to receive one All-Achievement in a project in their 4-H career.

Keziah Metz – Dogs

Samantha Rydwelski – Horse and Pony

Logan Boyle – Rabbits

Mariah Award

Madeline Batson – Best Friends 4-H Club

Maizie Murphy – Best Friends 4-H Club

COUNTY NEWS AND EVENTS



Outstanding 4-H Leader Award

The Outstanding 4-H Leader Award recognizes 4-H leaders for their volunteer service and leadership within their 4-H clubs as well as their leadership on county programs, committees, and activities that benefit the youth and their families enrolled in Berrien County 4-H.

Brian Troxell

Tractor Operator Program

Herman Mattson

Straight Shooters 4-H Club

2023 Berrien County 4-H Member & Leader Recognition

4-H Club Award

4-H Club award recognizes a club's accomplishments as submitted and documented by the youth members. Recognition is given to three (3) clubs based on member counts as verified by the MSU Extension Office. Size breakdown: Small (0-14), Medium (15-29), and Large (30 or more).

Small Group – Galien Chanters 4-H Club

Medium Group – Four Flags 4-H Club

Michigan 4-H Dog Patch Program

The Dog Patch Program is designed to recognize the personal achievements of individuals participation in the 4-H Dog Program. The program has been in existence since 1987 and provides youth with goals to work towards in this project area.

Anna Ault

Cristy Burchett

Dylan Coward

Micah Forrest

Duncan Haynes

Vincent Haynes

Elliott Keys

Brayden Murphy

Maizie Murphy

Jacob VanDyke

Marissa Belcher

Ganson Carpenter

Leland Carpenter

Jordan Davis

Danielle Finn

Daphne Finn

Alyssa Garrison

Johnathan Garrison

Katelyn Garrison

Lucy Madison

Keziah Metz

Finn Oliver

Teegan Oliver

Zachary Shall

Ceili Oliver

Darby Oliver

Noah Metz

Brenna Oliver

Emerald Clover Society

The Michigan 4-H Emerald Clover Society honors former alumni whose professional leadership and community service reflect the ultimate outcome of 4-H membership.

Karen Kietzer – Tryon 4-H Saddle Club

National 4-H Week Winners

Display Contest

Leader Award Katrina Schneider : \$30 Gift Certificate to Shop 4-H

First Place Youth Michael Schneider: \$50

Cloverbud Award Amelia: Special 4-H Prize

Journal Entry:

First Place Micheal Schneider : \$50

Second Place Maizie Murphy: \$30

Third Place William Schneider : \$20

Cloverbud Award Amelia Schneider: Special 4-H Prize



Animal Science Knowledge Quest

Member First Place Micheal Schneider : Special 4-H Prize

Cloverbud Award Amelia Schneider : Special 4-H Prize

COUNTY NEWS AND EVENTS



Club Officers 4-H Club Officer

Pins are presented each year to Club Officers who have completed their annual term.

President

Brooke Strefling
Jennifer Pellett
Charlotte Lowry
Jennysen Frantz

Vice President

Brayden Lawson
Aiden Conley
Sean Walker
Logan Boyle
Alexander McCully

Treasurer

Brooklyn Wheeler
Sean Walker
Kyle Smith
Paige Shafer
Zachary Shall

Secretary

Maizie Murphy
Paul Pirri
Corbin Good
Sarah Hackett
Brooklyn Wheeler

Reporter

Brayden Lawson

2023 Berrien County 4-H Member & Leader Recognition

Leo Stanley Outstanding 4-H'er Award

The Leo Stanley Outstanding 4-H'er Award is the highest county honor a 4-H'er can receive and is sponsored by the Southwest Exchange Club of Michigan. Selection is made encompassing a member's whole 4-H career. A maximum of two youth can receive this honor each year.

Emma Zeiger – River Valley Wranglers 4-H Club

County Project Pins

The County Project Medals recognizes members within a project area that they have completed for at least three years. Youth are only able to receive one project medal in a project area in their 4-H career.

*Brooklyn Wheeler – Horse and Pony
Esme Simpson – Horse and Pony
Logan Edgerle – Horse and Pony
Samantha Rydwelski – Horse and Pony
Aiden Conley – Floriculture*

*Logan Boyle – Rabbit
Keziah Metz – Dog
Noah Metz – Dog
Alexander McCully – Archery
Ginger Hendershott – Cake Decorating*

Senior Awards

4-H Senior Awards were presented to Berrien County 4-H members who have been a member for five or more years and have plans to graduate from high school in the current 4-H year. Please note, cords will not be replaced if lost. 4-H Families are asked to request permission from their designated school in advance if there are any restrictions when it comes to wearing cords during graduation. If school restrictions do apply, we ask that all families respect school policy accordingly. 2023 4-H Senior Award Recipients are as follows:

*Avery Steffes
Megan Trapp
Elise Schmaltz
Kyle Smith
Aiden Conley
Sean Walker*

*Vincent Haynes
Camille Czech
Keziah Metz
Allison Kirk
DJ Freehling
Mason Petzke*

*Ashton Shall
Matthew Moore
Lily Morse
Emma Zeiger
Lauren Lovell
Sarah Hackett
Nathan Litaker*

Teen Leader Pins

4-H Teen Leader Awards are presented to youth who have successfully completed a Teen Leader project during the current 4-H year.

*Sarah Hackett
Ethan Hackett
Natalie Jordan
Ava Camacho
Brayden Lawson
Nathan Litaker
Eliana Fischer*

*Aleena Schadler
McKayla Schadler
Grace Bachman
Rebkah Hettig
Jemma Johnson
Clare Shafer
Traeton Camacho*

*Brayden Lawson
Kyle Smith
Jennifer Pellett
Kayleigh Lawric
Denielle Sebty
Brooklyn Wheeler*

STATE NEWS AND EVENTS



Explore the globe with Crafts Around the World!



Curious about other countries around the globe? Like making crafts? The Michigan 4-H Crafts Around the World series provides lessons and instructions for youth to create simple crafts and increase cultural awareness.

In its latest piece, youth can learn about the European country of Norway while making a Norwegian gnome. In Norway, a gnome is called a nisse: a creature who lives in barns or homes, protecting the countryside and the people who live there.

View this activity at www.canr.msu.edu/resources/crafts-around-the-world-series-europe-norwegian-gnome-nisse.

View all the Crafts Around the World activities at www.canr.msu.edu/global_cultural_education/resources.

November 8: Adulting 101 - Professionalism in the Workplace

Online

Participants will increase their awareness of what it means to be professional and gain tips on different aspects of the work environment to consider, including: shared workspace, relationships with coworkers, communicating and setting boundaries. This free online series is open to teens and young adults (17 and under) and youth development professionals, teachers and adults (18 and up). www.canr.msu.edu/events/adulting10111-8-23

November 14: Wild Spartans – Careers in the Exotic Animal Industry

Online

Jump into the world of breeding and caring for amphibians and reptiles. Meet Zach Brinks, vice president of live operations at Josh's Frogs. Learn about his work and the education and career path he followed to get there. Youth will be encouraged to ask questions to learn more through a live Q&A. This free online series is open to youth ages 12-19. events.anr.msu.edu/wildspartans20232024/

November 21: Michigan 4-H Volunteer Webinar Series - Youth Engagement in 4-H Experiences

Online

Explore ways 4-H volunteers can help to increase the level of youth engagement in their 4-H experiences. This series will provide Michigan 4-H volunteers with a variety of learning opportunities to help them grow as a volunteer and support Michigan 4-H'ers. This session will be offered twice, once as a daytime option and once as an evening option for the convenience of volunteers.

12 p.m. session: www.canr.msu.edu/events/michigan-4-h-volunteer-webinar-series-youth-engagement-in-4-h-experiences

7 p.m. session: www.canr.msu.edu/events/michigan-4-h-volunteer-webinar-series-youth-engagement-in-4-h-experiences7pm

November 28: Giving Tuesday

Online

Join the #GivingTuesday movement — a global day of giving — and support 4-H! From 12 a.m. to 11:59 p.m. EST, Michigan 4-H supporters are invited to participate by giving their support financially or helping spread the word. Michigan 4-H has a goal to raise \$5,000 to grow 4-H county endowments in a 24-hour period. County 4-H endowments provide a perpetual source of income for county 4-H programs and every dollar is an investment in 4-H! <https://mi4hfdtn.org/giving-tuesday/>



STATE NEWS AND EVENTS



MSU Extension partners with legislators to host first Michigan 4-H Day at the Capitol

On Wednesday, October 4, Michigan State University Extension hosted the first Michigan Day at the Capitol, in partnership with State Reps. Matthew Bierlein (R-Vassar) and Reggie Miller (D-Van Buren Twp.). The event, held at Heritage Hall, showcased the positive impact of the Michigan 4-H program and brought visibility to its efforts throughout the state.

“Michigan 4-H Day at the Capitol was a great opportunity to educate about and bring awareness to the 4-H program,” said Quentin Tyler, director of MSU Extension. “We truly appreciate Reps. Bierlein and Miller for their collaboration in hosting this event.”

Michigan 4-H is the flagship youth development program of MSU Extension and reaches nearly 100,000 young people ages 5 to 19 each year. Through various activities, clubs, groups, programs and events, 4-H'ers are offered hands-on learning experiences where they can explore their passions and interests while growing confidence, life skills and a sense of responsibility.

“Michigan 4-H is helping to grow youth in every county of our great state, but we would like to reach even more young people with the life-changing program,” continued Tyler.

“We hope that our event brings us closer to that goal by increasing the visibility of our 4-H program and all that we offer to youth in our state.”

Michigan 4-H Day at the Capitol was attended by legislators, stakeholders and members of the public. At the event, attendees had the opportunity to visit informational booths hosted by Michigan 4-H youth and staff. A brief program was also held, with event hosts Reps. Bierlein and Miller delivering comments to the audience. Also providing comments were Tyler, MSU Interim President Teresa Woodruff, Genesee County Clerk Register of Deeds Domonique Clemons, who is a Michigan 4-H alum, and Lenawee County 4-H'er Lia Kurowicki.

The program was livestreamed on the Michigan 4-H Facebook and can be viewed at www.facebook.com/Michigan4H. To learn more about Michigan 4-H, visit www.canr.msu.edu/4h.



Michigan 4-H license plate proposed

On Tuesday, September 26, legislation was unveiled that if passed, will create a new fundraising license plate that would generate support for Michigan 4-H. State Reps. Matthew Bierlein, of Vassar, and Reggie Miller, of Van Buren Township, sponsored the legislation which would allow for the creation and sale of a Michigan 4-H plate through the Secretary of State.

The plans would create the 4-H fundraising plate and establish regular disbursements from the license plate sales to the Michigan 4-H Foundation. Led by a board of trustees, the foundation works in partnership with MSU Extension and Michigan 4-H Youth Development to support programs to prepare youth for meaningful and productive lives.

The bills were referred to the Michigan House Committee on Transportation, Mobility and Infrastructure. On October 11, Michigan 4-H Foundation Director Abbey Miller and MSU Extension Associate Director Dr. Deanna East testified before the committee in support of the 4-H fundraising license plate legislation.



Reps. Miller (left) and Bierlein (right) with MSU Interim President Woodruff (center).



Berrien County MSU Extension
1737 Hillandale Road
Benton Harbor, MI 49022



4-H Spotlight

Berrien County 4-H Youth Development



Facebook – “Berrien County 4-H Youth Development”

Instagram - @realberriencounty4-H

