



NOVEMBER 2022

4-H Family News

ROSCOMMON COUNTY



ROSCOMMON COUNTY 4-H AND NOVEMBER 8TH

Dear families & friends of 4-H,

We are busy letting people know that 4-H and our MSU Extension office are funded in part by the Roscommon County General Operating Millage, which is impacted by the Headlee Restoration to be on the ballot on November 8th. We encourage you to be familiar with the specific details that are outlined on page six of this 4-H newsletter. Please be informed and spread the word of this key decision by our voters. Learn more about the General Operating Millage Renewal and about what's on your ballot: bit.ly/Operating_Millage_Info.

The 4-H Teen Fun Night is going to be held November 18th at The Northern Event & Banquet Center in Houghton Lake. 4-H will cover the \$5 registration fee for the first 50 participants. This is an introductory event to help young people have someplace fun to go and also get fed an excellent meal of a full taco bar. This is the perfect event for 4-H members to invite a friend to give 4-H a try.

We have some other events coming up in early 2023. We have a 4-H Entrepreneur Club getting started that will walk teens through the process of starting their own business. Registration for the 4-H Cross Country Ski Club is going to open in early December and the club begins on January 10th of 2023. Thanks to the generous support of the Cross Country Ski Headquarters, this popular three-decades-old event had a record number of participants this past year. Be sure to sign up early.

The 4-H Enrollment Roundup has already started. Those who register on or before December 31st will be entered into a prize drawing. Previously we have given away some nice 4-H swag, but new this year you can also opt to attend the 4-H Tubing event at Hansen Hills on a Saturday afternoon (date to be announced).

Please be sure to remind people to vote on November 8th.

Sincerely, John Wurm, Roscommon County 4-H Program Coordinator

CONTACT US:

John Wurm
4-H Program Coordinator
(989) 275-7177
wurmj@msu.edu



Rebecca Sova
Support Staff
989-275-5043
sovarebe@msu.edu



MAIN OFFICE:

(989) 275-5043
500 Lake Street
Roscommon, Michigan 48653

ONLINE:

msue.anr.msu.edu/county/info/county
facebook.com/RosCo4HFun/

MSU is an affirmative-action, equal-opportunity employer, committed to achieving excellence through a diverse workforce and inclusive culture that encourages all people to reach their full potential. Michigan State University Extension programs and materials are open to all without regard to race, color, national origin, gender, gender identity, religion, age, height, weight, disability, political beliefs, sexual orientation, marital status, family status or veteran status. Issued in furtherance of MSU Extension work, acts of May 8 and June 30, 1914, in cooperation with the U.S. Department of Agriculture. Quentin Tyler, Director, MSU Extension, East Lansing, MI 48824. This information is for educational purposes only. Reference to commercial products or trade names does not imply endorsement by MSU Extension or bias against those not mentioned.

 **4-H Enrollment Roundup** 
Enroll/Renew Enrollment before January 1
and be entered into a drawing for prizes!
<https://v2.4honline.com>

For instructions on enrolling for the first time, or renewing enrollment if you were previously in 4-H, visit the 4-H Online Family Guide:
<https://www.canr.msu.edu/resources/4-h-online-2-0-family-guide>



STATEWIDE CALENDAR OF EVENTS

SAVE THE DATE!

State 4-H Rabbit & Cavy Show

Save the Date 

State 4-H Rabbit and Cavy Show
Saturday, January 28, 2023

MSU Pavilion for Agriculture
and Livestock Education

4301 Farm Ln
East Lansing, MI



Enter Day of Show

The State 4-H Rabbit & Cavy Show will be held on January 28, 2023, at the MSU Pavilion for Agriculture and Livestock Education in East Lansing.

This one-day event is open to participants age 8 to 19.

Participants must enter the day of the show.

To be eligible to enter, exhibitors must be Michigan 4-H members and own the rabbits or cavies they wish to enter.

For more information, visit <https://www.canr.msu.edu/events/state-4-h-rabbit-cavy-show-2023>.

November 3: 4-H in the Kitchen – Whodunit Edition

Baldwin, Scottville or online

Get your sleuth on and explore a world of mystery, intrigue, and espionage. 4-H in the Kitchen will explore the world of forensic science by learning how to prepare a pair of dishes inspired by some of the best mystery writers of the past 30 years. This will be a hybrid workshop so participants will have the option of attending in person or virtually.

<https://www.canr.msu.edu/events/4-h-in-the-kitchen-whodunit-edition>

November 8: Wild Spartans – Exploring Michigan's Largest State Park

Online

Take a look into life working with fisheries and wildlife! 4-H Wild Spartans Series will hike to the heights of the Porcupine Mountains and along the shores of Lake Superior as we meet Katie Urban, interpreter for the Porcupine Mountains Wilderness State Park for the Michigan Department of Natural Resources. Learn about her work and the education and career path she followed to get there. Youth will be encouraged to ask questions to learn more through a live Q&A. This free online series is open to youth ages 12-19.

<https://www.canr.msu.edu/events/wild-spartans-series-november-2022>

November 17: 4-H Entrepreneurship Guidelines and Resource Training

Online

Do you want to learn more about how to run an entrepreneurship club? Do you have questions about how to handle the income and profits from an entrepreneurship project? Are you looking for youth entrepreneurship resources? This workshop is for you.

<https://www.canr.msu.edu/events/4-h-entrepreneurship-guidelines-and-resource-training>

December 3-4: Michigan 4-H Spectacular Youth Leadership Institute

Various locations

The institute will feature a wide variety of incredibly fun and interactive sessions focused on four tracks: personal development and leadership, community leadership, global citizenship, and leadership for diversity, equity, and inclusion. The institute will be held as an overnight event in East Lansing, Mich. (Dec. 3-4), and as a day-long program in Wayne County and Kalamazoo County on Dec. 3.

<https://www.canr.msu.edu/events/michigan-4-h-spectacular-youth-leadership-institute>





STATEWIDE 4-H NEWS

Michigan 4-H to participate in Giving Tuesday, Nov. 29

On Nov.29, Michigan 4-H is once again participating in Giving Tuesday.

The Giving Tuesday movement is a global day of giving and a chance to celebrate the opportunities that make 4-H so extraordinary.

From 12 a.m. to 11:59 p.m. EST, Michigan 4-H supporters are invited to participate in Giving Tuesday by giving their support financially or helping spread the word via social media channels and word of mouth.

Michigan 4-H has a goal to raise \$5,000 to grow 4-H county endowments in a 24-hour period.

County 4-H endowments are funds created by gifts from one or more donors to the Michigan 4-H Foundation. These endowments provide a perpetual source of income for county 4-H programs, where the principal amount remains intact and the investment income supports annual needs for a county 4-H program.

Every dollar is an investment in 4-H! Learn more about 4-H Giving Tuesday at <https://mi4hfdtn.org/giving-tuesday/>.



Michigan 4-H Spectacular Youth Leadership Institute December 3-4

The Michigan 4-H Spectacular Youth Leadership Institute is an event for teens who want to improve their communities and our world through leadership and youth power! Attending the institute will help teens gain leadership skills and approach life with their head, heart, and hands open to new ideas, interesting people, and diverse cultures. Attend the institute and be part of the movement that has YOUth leading the way!

The institute will feature a wide variety of incredibly fun and interactive sessions focused on four tracks: personal development and leadership, community leadership, global citizenship, and leadership for diversity, equity and inclusion.

The institute will be held as an overnight event in East Lansing on Dec. 3-4, and as a day-long program in Wayne County and Kalamazoo County on Dec. 3 from 10 a.m.–3 p.m. Participants who register for the overnight event in East Lansing will attend a MSU Men's Hockey game on Sat., Dec. 3, as part of the evening entertainment!

This Michigan 4-H workshop is open to ALL teens (ages 13 and older by Jan. 1, 2023) and to adult leaders who have Gold Level volunteer status with MSU Extension. Space will be limited for this workshop. Learn more at: <https://www.canr.msu.edu/events/michigan-4-h-spectacular-youth-leadership-institute>.

The Michigan 4-H Spectacular Youth Leadership Institute is sponsored with a grant from the Michigan 4-H Foundation.



COUNTY 4-H NEWS

Roscommon County 4-H Awards and Appreciation



Thank you Friends of 4-H (see photo left): Mariah Frye Colie, Erin Gielincki, and Stu Colie from Roscommon's Cross Country Ski Headquarters, host of the 4-H Cross Country Ski Club, the longest-running 4-H club in Roscommon County!



Thank you Friends of 4-H: Lear Corporation, represented here by Amy Schmitt (above, left), and Friends of 4-H recipient: Family Fare of Roscommon, represented here by Debra Argue (above, right).

Thank you to dedicated 4-H volunteers who were recognized: (l to r) Mike Gammicchia, Linda Barber, 4-H Program Coordinator John Wurm, Kate Gammicchia, and Terri Cook.



Lexy and Gabby Gammicchia received the Visual Arts Award from 4-H Program Coordinator, John Wurm.



Unable to attend, but receiving the top awards were Sandra Gray for the Golden Merit Award and Michelle Gurzynski for 4-H Volunteer of the year.



LOCAL PROGRAM!

4-H Teen Fun Night

DATE & TIME:

November 18, 2022
7:00PM-10:00PM

LOCATION:

The Northern Center &
Fox Den Restaurant
7784 Stone School Rd,
Houghton Lake, MI 48629

COST: FREE to first 50
who register in advance:

https://bit.ly/4-HteenFUN_Nov

\$5 at the door after first 50
registrants

Thank you to our host,
The Northern Center/
Fox Den Restaurant.

The annual 4-H
participation fee has been
indefinitely waived.

Michigan State University is committed to providing equal opportunity for participation in all programs, services and activities. Accommodations for persons with disabilities may be requested by contacting John Wurm two weeks prior to the program. Requests received after this date will be honored whenever possible.

MSU is an affirmative-action, equal-opportunity employer. Michigan State University Extension programs and materials are open to all without regard to race, color, national origin, gender, gender identity, religion, age, height, weight, disability, political beliefs, sexual orientation, marital status, family status or veteran status.

WHO SHOULD ATTEND:

Open to youth 12-19 in Roscommon and surrounding counties. 4-H membership is not required.

DESCRIPTION:

Join us for a taco bar, serious fun time and a chance to meet new friends! Teens from Roscommon and surrounding counties are invited for a night of video games, basketball, board games, cards and multiple door prize drawings throughout the evening!

PARENTS: If you wish, feel free to enjoy some quiet time and ½ off an appetizer at The Fox Den Restaurant.

REGISTER IN ADVANCE! Get an extra ticket for a door prize drawing!

https://bit.ly/4-HteenFUN_Nov



Questions: MSU Extension - (989) 275-5043



Yaroslav Shuraev



Kampus Production



cottonbro



The Northern Center
Banquets & Events

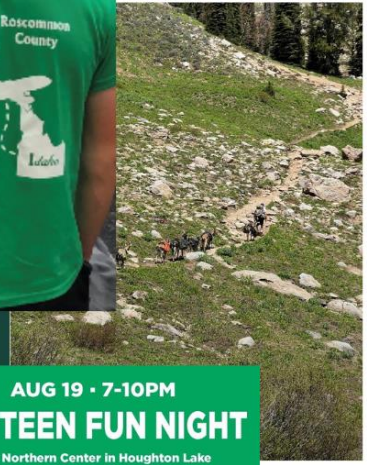


MSU Extension & 4-H are funded by the Roscommon County General Fund which is on the Nov. 8 ballot as the Headlee Restoration Millage.



MSU Extension provides research-based programs and information to help communities and individuals address challenges. Programs like:

- 4-H Youth Development
- Nutrition, food, and health programs for seniors, adults, youth
- Natural resources stewardship for wildlife, forests, lakes and rivers
- Gardening and horticulture education and resources
- Support for Michigan businesses including tourism and agriculture



\$5 AUG 19 • 7-10PM
4-H TEEN FUN NIGHT
 The Northern Center in Houghton Lake
 Teens from Roscommon and Surrounding Counties
FOOD • FRIENDS • FUN
 MULTIPLE DOOR PRIZE DRAWINGS THROUGHOUT THE NIGHT!
 REGISTER: [HTTPS://BIT.LY/4-hteenfunnight](https://bit.ly/4-hteenfunnight)



NOTICING EVIDENCE OF GYPSY MOTH INVADERS? INFORMATION AVAILABLE!

MSU EXTENSION GYPSY MOTH INFORMATION & EDUCATION RESOURCES:

- Life cycle of the Gypsy Moth
- Creating your own sticky bands for trees
- Biological controls
- Predict future emergence

MICHIGAN STATE UNIVERSITY Extension

ROSCOMMON COUNTY

Headlee Restoration Information

VOTE NOV. 8 2022

On November 8, 2022 residents of Roscommon County will have the opportunity to vote regarding county services. The County is asking for a "Headlee Restoration" to restore the original millage rates approved by voters in 1978 for Roscommon County services and to help stabilize the general fund operating budget.

How will the Restoration impact my taxes?
 Estimates for a home value of \$80,000 (taxable value \$40,000)

| Area | Approximate Headlee Restoration Rate | Household Annual Impact | Household Monthly Impact | Household Weekly Impact | Compared to the cost of: |
|---------------|--------------------------------------|-------------------------|--------------------------|-------------------------|----------------------------|
| All Townships | 1.0920 | \$44.00 | \$3.70 | \$0.85 | One donut or cup of coffee |

Why is this important?

- Tax revenue is 49.5% of the county's general fund operating budget.
- As of July 2022 Roscommon County lost \$322,625.35 in annual revenue. Before the end of 2024 we expect to lose an additional \$967,876.05.
- Unless the county is able to recoup these funds, the following services and more will be impacted:

Operating Hours

ORV Enforcement

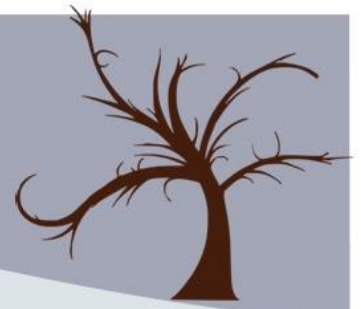
Conservation & Recycling

Online Services

Maintenance & Repairs

For more information on impacts to Roscommon County's budget and the November ballot proposals, visit www.roscommoncounty.net

Forest Forensics 2022: Webinar and History Hikes



Forest forensics is the art and science of using landscape features to learn more about the history of an area. Nearly every hill, pile of rocks or clearing tells us a story of past events - if we pay attention!

Join us for a combination of virtual and in-person experiences to learn more and start your forest forensic adventure!

Introduction webinar: Thursday, November 3rd from 6:30 - 7:30pm
We'll cover the basics about forest forensics and provide a glimpse of each history hike field site.

History hike field experiences*:

- ⇒ November 4, 1:00 - 3:00 in Gladwin County
- ⇒ November 5, 12:30 - 3:00 in Eaton County
- ⇒ November 5, 12:00 - 2:00 in Crawford County
- ⇒ November 12, 1:00 - 3:00 in Marquette County
- ⇒ December 3, 1:00 - 3:00 in Barry County

*location details will be emailed to registered participants

**LOCAL
PROGRAM!**

Register today! https://bit.ly/FF_Fall2022

View past Michigan Forest Forensics recordings here: uplandconservancy.org/webinars

Forest Forensics is presented in collaboration with the U.P. Land Conservancy, Pierce Cedar Creek Institute, Clare/Gladwin Conservation Districts, Little Forks Conservancy, Michigan DNR, Michigan History Center and MSU Extension.

Join us in southern Crawford County to explore the site of the CCC Camp Higgins Lake! Located 5 miles north of the CCC Higgins Lake Nursery and Museum, the camp was once home to hundreds of men serving in the Civilian Conservation Corps (CCC) in the 1930s. Hillary Pine, Historian for the Michigan History Center and Hartwick Pines, will give a talk about the CCC and then we will use maps of the original building layout to find remnants of the camp in the now forested landscape.

Michigan State University prohibits discrimination and harassment on the basis of race, ethnicity, color, national origin, sex, disability, religion, age, gender, gender identity, disability, height, marital status, political persuasion, sexual orientation, veteran status, or weight in its programs and activities. Accommodations for persons with disabilities may be requested by contacting Julie Crick at crickjul@msu.edu or 989-275-5043 at least two weeks prior to event to make arrangements. Requests received after this date will be fulfilled when possible.

HERE IS SOME OF THE GOOD STUFF 4-H OFFERS! CLICK ON IMAGE FOR DETAILS.

MICHIGAN STATE UNIVERSITY | Extension 

ARE YOU INTERESTED IN VIDEO PRODUCTION OR BEING ON TV?



4-H Community Health Ambassadors

Ambassadors will develop a youth-led state-wide public health education campaign in partnership with **Detroit Public Television** focused on raising awareness of childhood vaccines to their peers and families



 **SPECTACULAR!**
YOUTH LEADERSHIP INSTITUTE

EAST LANSING
DECEMBER 3-4, 2022
(2 DAY - OVERNIGHT PROGRAM)

**BELLEVILLE
DETROIT
VICKSBURG**
DECEMBER 3, 2022
(1 DAY: 10 AM - 3 PM)



MICHIGAN STATE UNIVERSITY | Extension



4-H in the Kitchen

Join Us Online or in Person

**4-H IN THE KITCHEN:
ISEKAI EDITION**

Jan. 16, 18, 23, 25, 2023 | 4:30 pm to 5:30 pm

LOCAL PROGRAM!

Michigan 4-H
Creative Arts
Celebration!

Save the Date!!
November 11-13
2022

Ralph A. MacMullan
(RAM) Conference
Center in Roscommon



 MICHIGAN STATE UNIVERSITY | Extension

 **4-H GROWS HERE**

MICHIGAN STATE UNIVERSITY | Extension

WWW.CANR.MSU.EDU/4H/EVENTS

HERE IS SOME OF THE GOOD STUFF 4-H OFFERS! CLICK ON IMAGE FOR DETAILS.



**Dance + Video + Physics
= the Magic of the FRIB!**
Facility for Rare Isotope Beams

Pasant Theatre

**OF EQUAL PLACE:
ISOTOPES IN MOTION**

Nov 6 @ 1PM
Tickets: \$10



TICKETS: whartoncenter.com/events/detail/of-equal-place-isotopes-in-motion

 DANCE EXCHANGE  HAPPENDANCE  FRIB



Join Us Online or In Person

**4-H IN THE KITCHEN:
WHODUNIT EDITION**

Nov. 3, 7, 10, 14, 2022 | 5:30 pm to 6:30 pm

 **4-H GROWS HERE** MICHIGAN STATE UNIVERSITY | Extension



GRADES
7-12

**BECOME A YOUTH INTERN
WITH MI DIARIES THIS FALL SEMESTER!**

 MLDIARIES.PROJECT  MLDIARIES  WWW.MI-DIARIES  MLDIARIESPROJECT



ATLANTA, GEORGIA

**NATIONAL
4-H CONGRESS**

November 25-29, 2022

Contact your local MSU Extension Office to apply
www.canr.msu.edu/national_4_h_congress/

MICHIGAN STATE UNIVERSITY | Extension

WWW.CANR.MSU.EDU/4H/EVENTS

HERE IS SOME OF THE GOOD STUFF 4-H OFFERS! CLICK ON IMAGE FOR DETAILS.



4-H Future Squad

Join the virtual club helping YOU get ready for your future!

MICHIGAN STATE UNIVERSITY | Extension



States' 4-H International Exchange Programs
2023 OUTBOUND PROGRAMS
Costa Rica · Japan · South Korea

Costa Rica Japan

South Korea

Are you curious about daily life, culture, and youth programs in other countries? Travel abroad with States' 4-H and enter a world that most tourists rarely get to see.



USDA National Institute of Food and Agriculture
U.S. DEPARTMENT OF AGRICULTURE

save the date

2023 NATIONAL 4-H CONFERENCE

FRIDAY, APRIL 14 – WEDNESDAY, APRIL 19
Hyatt Regency Crystal City + Online
Arlington, VA
MORE INFORMATION TO FOLLOW

Save the Date

State 4-H Rabbit and Cavy Show
Saturday, January 28, 2023

MSU Pavilion for Agriculture and Livestock Education

4301 Farm Ln
East Lansing, MI



Enter Day of Show



Youth Leadership Team (YLT)

- Up to 6 positions open for 2023 National 4-H Conference
- Submit interest by November 18, 2022
- For questions contact [Annie Ceccarini](#) and [Andrea Wikiera](#)

HERE IS SOME OF THE GOOD STUFF 4-H OFFERS! CLICK ON IMAGE FOR DETAILS.

**VOLUNTEER
TRAINING**



**WANT TO LEARN
MORE ABOUT HOW
TO RUN AN
ENTREPRENEURSHIP
CLUB?**

**Have questions about how to handle
the income and profits from an
entrepreneurship project?**

**Want to learn more about what the
4-H Entrepreneurship Project can
offer?**

**Looking for entrepreneurship
resources?**

**Join Us For
ENTREPRENEURSHIP
GUIDELINES AND
RESOURCES TRAINING**

For Staff and/or Volunteers

Zoom Meeting

Thursday, Nov. 17, 2022 from 6-7 P.M.

**SIGN UP NOW AT:
<https://bit.ly/4-Hentrep>**



**MICHIGAN STATE
UNIVERSITY | Extension**

WWW.CANR.MSU.EDU/4H/EVENTS