



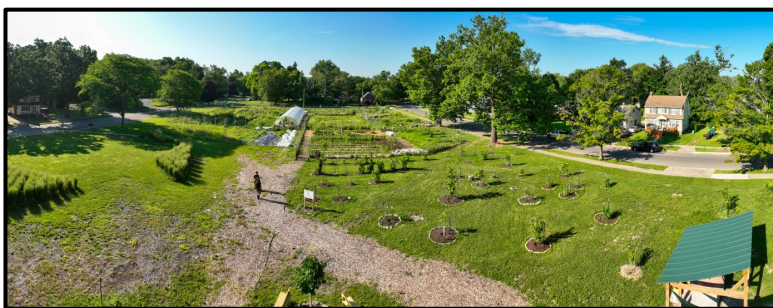


The Michigan State University – Detroit Partnership for Food, Learning, and Innovation began in 2017 after years of dialogue between MSU administrators and stakeholders in Detroit. The facility marks the first urban agriculture center of MSU and any land-grant university. Our goal is to leverage the space to:

1. Support urban agriculture through research and education
2. Strengthen the relationship between MSU and the people of Detroit
3. Improve the quality of life for MI residents through Extension and local programs



Vision: Be the preeminent urban agriculture center where people interact with the food system and MSU in ways that deepen understanding and foster innovation.



“I had no idea so many fruits and vegetables could be grown in Michigan!”

- Visiting undergraduate student

Highlights

Top programs:

- Backyard Fruit 101
- 4-H programs (Ages 7-12)
- Food preservation classes
- Farm beautification workdays



2000+ pounds of food grown and donated to local families

15+ partnerships w/ other universities & community organizations

1,000+ volunteer hours to date

Over 350 youth and 1,700 adults participated in programs since 2022



Featured in 5 peer reviewed articles



20 interns, apprentices and graduate students mentored since 2019

Development and Investments

Learning Center (\$765,000)

- Programming space
- Offices
- Year-round activities
- Open for community use



Pizza Oven (\$18,000)

- Farm to table experience
- Community building
- Over 100 pizzas made per year

Shed (\$27,000)

- Constructed by Detroit residents
- Integrated educational program
- 100% Michigan labor and materials

High Tunnel (\$10,000)

- Season extension
- Improved crop quality

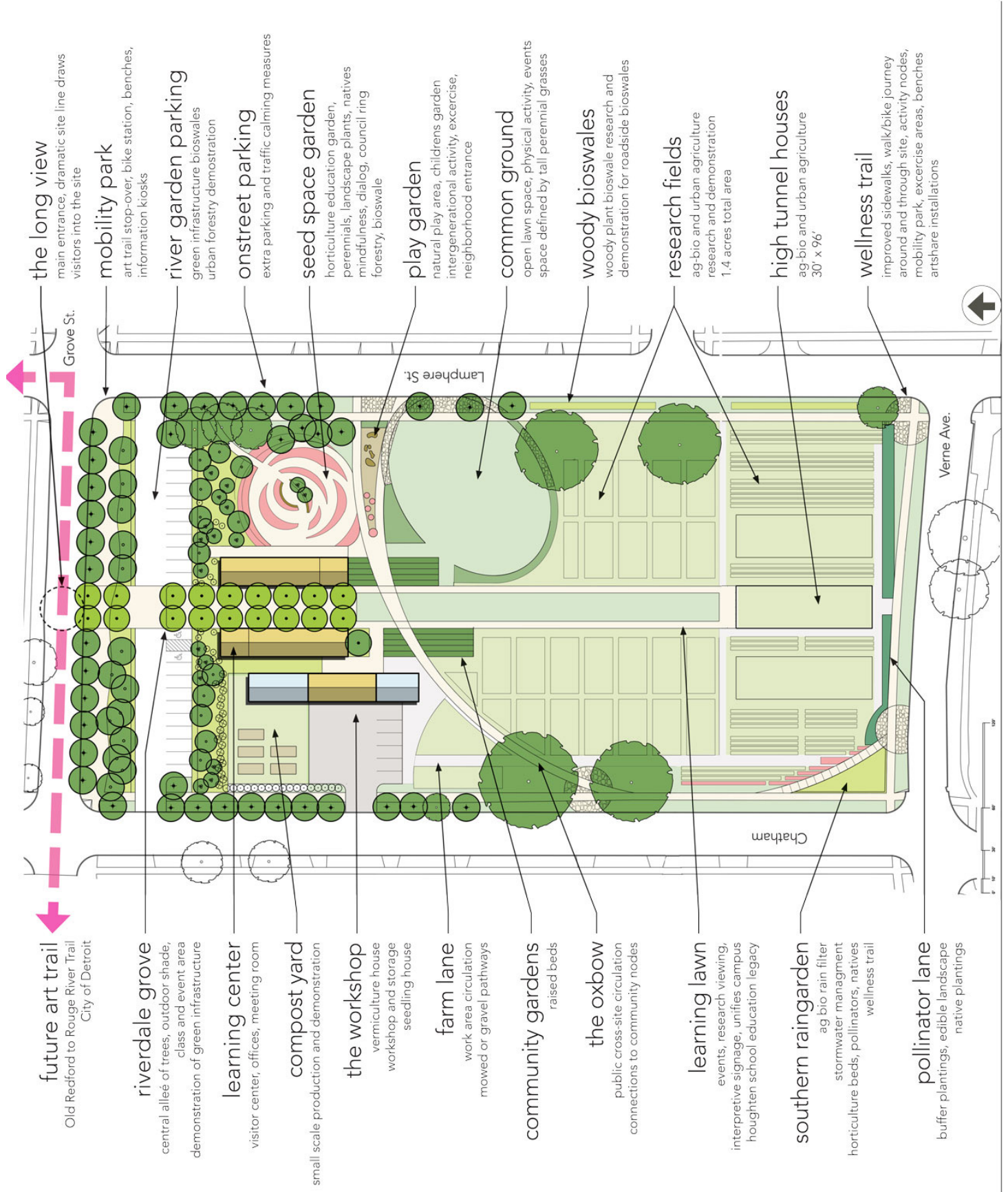
Total Invested: \$1.52 million

Jobs (\$700,000+)

- Two full-time staff
- Annual interns/apprentices
- Regular contractual work



Master Plan



the long view
main entrance, dramatic site line draws visitors into the site

mobility park
art trail stop-over, bike station, benches, information kiosks

river garden parking
green infrastructure bioswales urban forestry demonstration

onstreet parking
extra parking and traffic calming measures

seed space garden
horticulture education garden, perennials, landscape plants, natives mindfulness, dialog, council ring forestry, bioswale

play garden
natural play area, childrens garden intergenerational activity, exercise, neighborhood entrance

common ground
open lawn space, physical activity, events space defined by tall perennial grasses

woody bioswales
woody plant bioswale research and demonstration for roadside bioswales

research fields
ag-bio and urban agriculture research and demonstration 1.4 acres total area

high tunnel houses
ag-bio and urban agriculture 30' x 96'

wellness trail
improved sidewalks, walk/bike journey around and through site, activity nodes, mobility park, exercise areas, benches artshare installations

future art trail
Old Redford to Rouge River Trail
City of Detroit

riverdale grove
central allee of trees, outdoor shade, class and event area demonstration of green infrastructure

learning center
visitor center, offices, meeting room

compost yard
small scale production and demonstration

the workshop
vermiculture house workshop and storage seedling house

farm lane
work area circulation mowed or gravel pathways

community gardens
raised beds

the oxbow
public cross-site circulation connections to community nodes

learning lawn
events, research viewing, interpretive signage, unifies campus houghten school education legacy

southern raingarden
ag bio rain filter stormwater management horticulture beds, pollinators, natives wellness trail

pollinator lane
buffer plantings, edible landscape native plantings



Future Plans



Innovation Lab (\$2,200,000)

- Wood and metal workshop
- 3-D printers
- Food preservation space
- Salvaged wood and materials
- Office and storage space
- 4,200 sq ft



Pavilion (\$120,000)

- Outdoor classroom
- Community gathering
- Cultural activities
- Farm to table events
- 1,200 sq ft

Director: Naim Edwards / edwar649@msu.edu

Site and Program Manager: Stathis Pauls / paulssta@msu.edu