



FEED THE FUTURE

The U.S. Government's Global Hunger & Food Security Initiative

Minimum Farm-gate Prices and Agricultural Production Estimates in Malawi

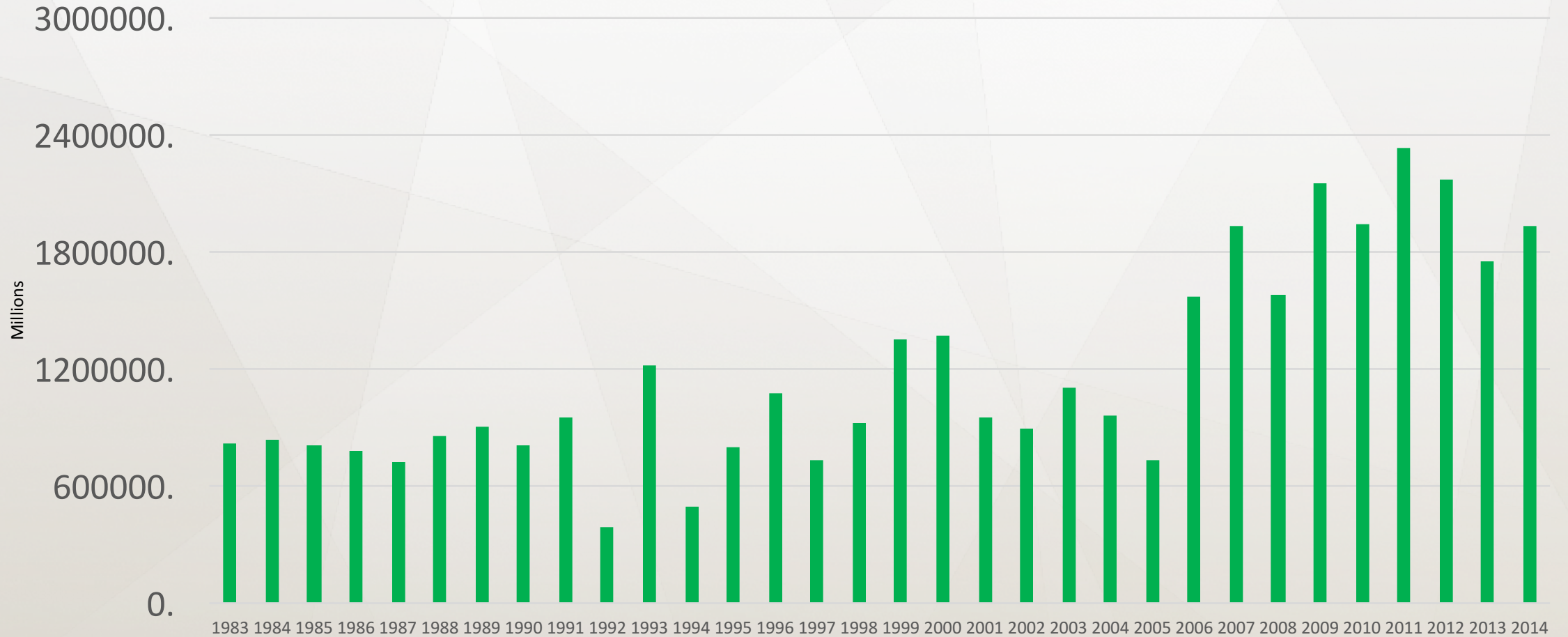
Joseph Kanyamuka

New Alliance Policy Acceleration Support (NAPAS:
Malawi)

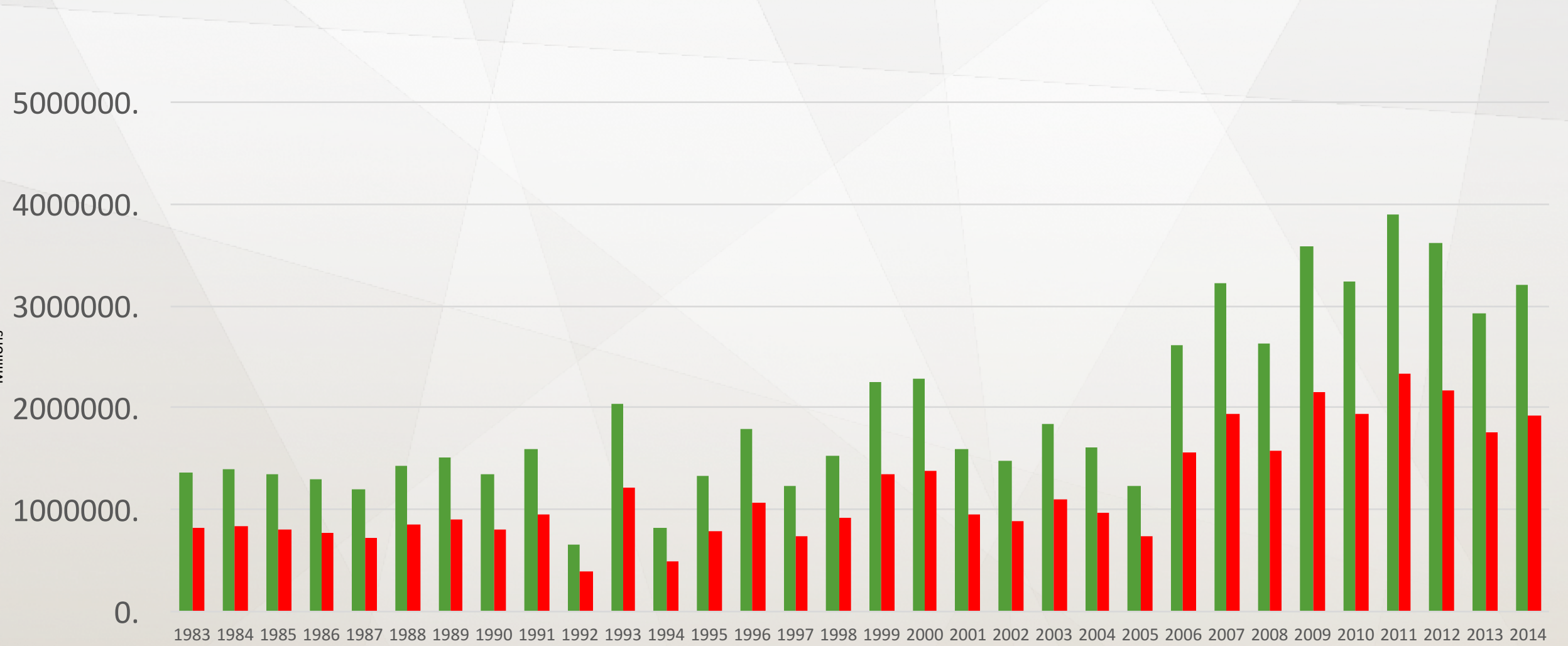
Sunbird Livingstonia, Salima, Malawi

June 19, 2017

Maize production in Malawi (Millions of Metric Tonnes-APES)



Maize production in Malawi (Millions of Metric Tones-APES)



■ MAIZE PRODUCTION (METRIC TONNES)

■ Fake Maize production data

Re-evaluating the Malawian Farm Input Subsidy Programme

Joseph P. Messina^{1*†}, Brad G. Peter^{1†} and Sieglinde S. Snapp^{2†}

https://www.podomatic.com/podcasts/foodfixpodcast/episodes/2017-04-21T05_30_01-07_00

<https://agrilinks.org/blog/study-malawis-fertilizer-subsidy-not-miraculous>

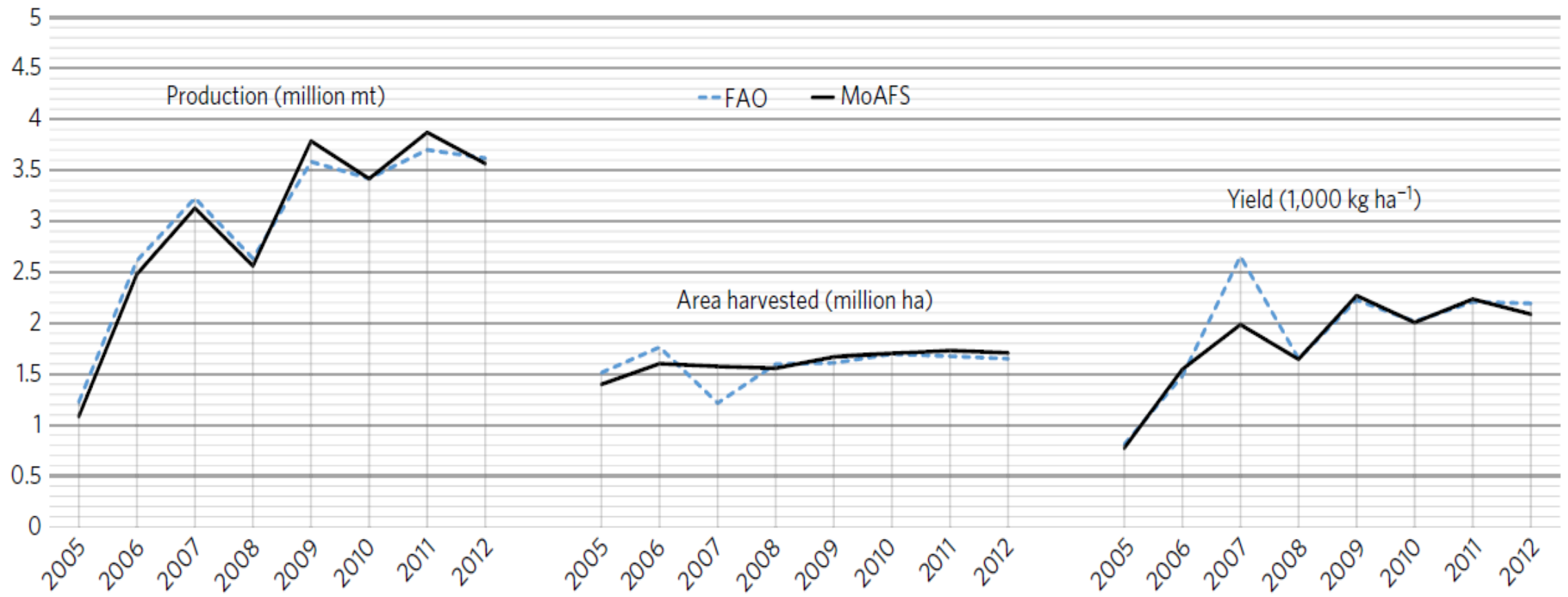


Figure 3 | Comparison between MoAFS maize estimates and FAO distributed data. Left, production; centre, area harvested; right, yield. Data sources: FAOSTAT²⁸ and MoAFS²⁹. Refer to Table 1.

Minimum Farm-gate Prices

Role of Minimum Farm-gate Prices

- a) To improve food security
- b) To increase smallholder agricultural incomes
- c) a) and b)
- d) Others

PRESS RELEASE

**MINIMUM FARM GATE PRICES
2016/17 AGRICULTURE SEASON**

All farmers and the general public are informed that the Minimum Farm Gate prices for crops for 2016/2017 Agriculture season effective **1st April, 2017** are as follows:

Crop	Minimum Farm Gate prices (2016/2017) (MK/Kg)
Maize	170
Rice-Polished	450
Rice-Paddy	230
Sorghum	190
Finger Millet	130
Pearl Millet	160
Wheat	250
Soya Beans	280
Pure Beans	300
Mixed Beans	250
Groundnuts-Shelled	400
Groundnuts-Unshelled	290
Pigeon peas	320
Cow peas	230
Grams	200
Bambara Nuts	250
Chick peas	300
Sesame	250
Castor Oil	200
Sunflower	300
Paprika-Grade A	650
Paprika-Grade B	600
Chillies-Grade A	900
Chillies-Grade B	800
Cassava-Dried	210
Cassava-Wet	40

The prices are with immediate effect. All Agro dealers, Agro processors and others who deal with crop commodities are requested to buy the stated crop commodities of prices not less than those stipulated above.

Licences to buy agricultural produce can be obtained from offices of Programme

MIT

Unduna wa alimi ndi an chino cha 2

MBEU

Chimanga
Mpunga Wc
Mpunga Wc
Mapira
Mawere
Mchewere
Tirigu
Soya
Nyemba - M
Nyemba - M
Ntedza - Os
Ntedza - Os
Nondolo
Khobwe
Mphozo
Nzama
Tchana
Chitowe
Nsatsi
Mpendadzu
Tsabola wa
Tsabola wa
Chinangwa
Chinangwa

Undunawu kwa alimi k chidziwitsoc

Ma Licence



Agricultural Commodity Exchange for Africa
Plot 28/251 Kanengo Light Industrial Area,
P O Box 40139, Kanengo,
Lilongwe 4, Malawi.
Tel: (+265)1710204/304
ace@acefrica.org
www.acefrica.org

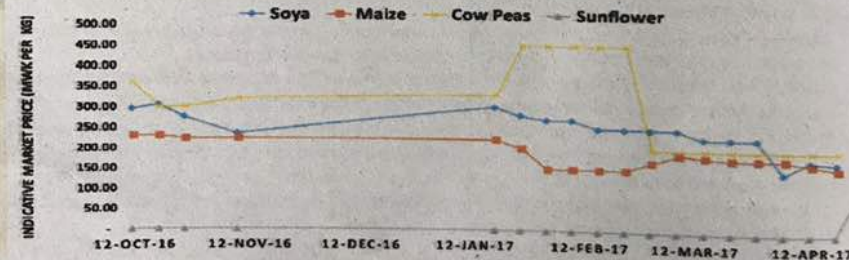
Agricultural Commodity Exchange for Africa

ACE Indicative Prices

Market prices observed by ACE Trade Dept. These include factory gate prices in Lilongwe based on delivery of 5 MT of commodity. Prices are quoted in MK per KG

Commodity	Market Price (Low)	Market Price (High)	Previous Week (Low)	Previous Week (High)	Average Price Percentage Change from previous week
Soya	160	160	180	180	-11%
Maize (New Season stock)	80	80	90	90	-11%
Sunflower	110	110	120	130	-12%
Groundnuts CG7	600	600	600	600	0%
Groundnuts Chalimbana	600	600	600	600	0%
Cow Peas	-	-	-	-	0%
Pigeon Peas	-	-	-	-	0%

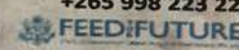
SEASONAL PRICE TRENDS



For more info on prices, please contact the ACE Limited Trade Floor on +265 998 223 223



Flanders
State of the Art



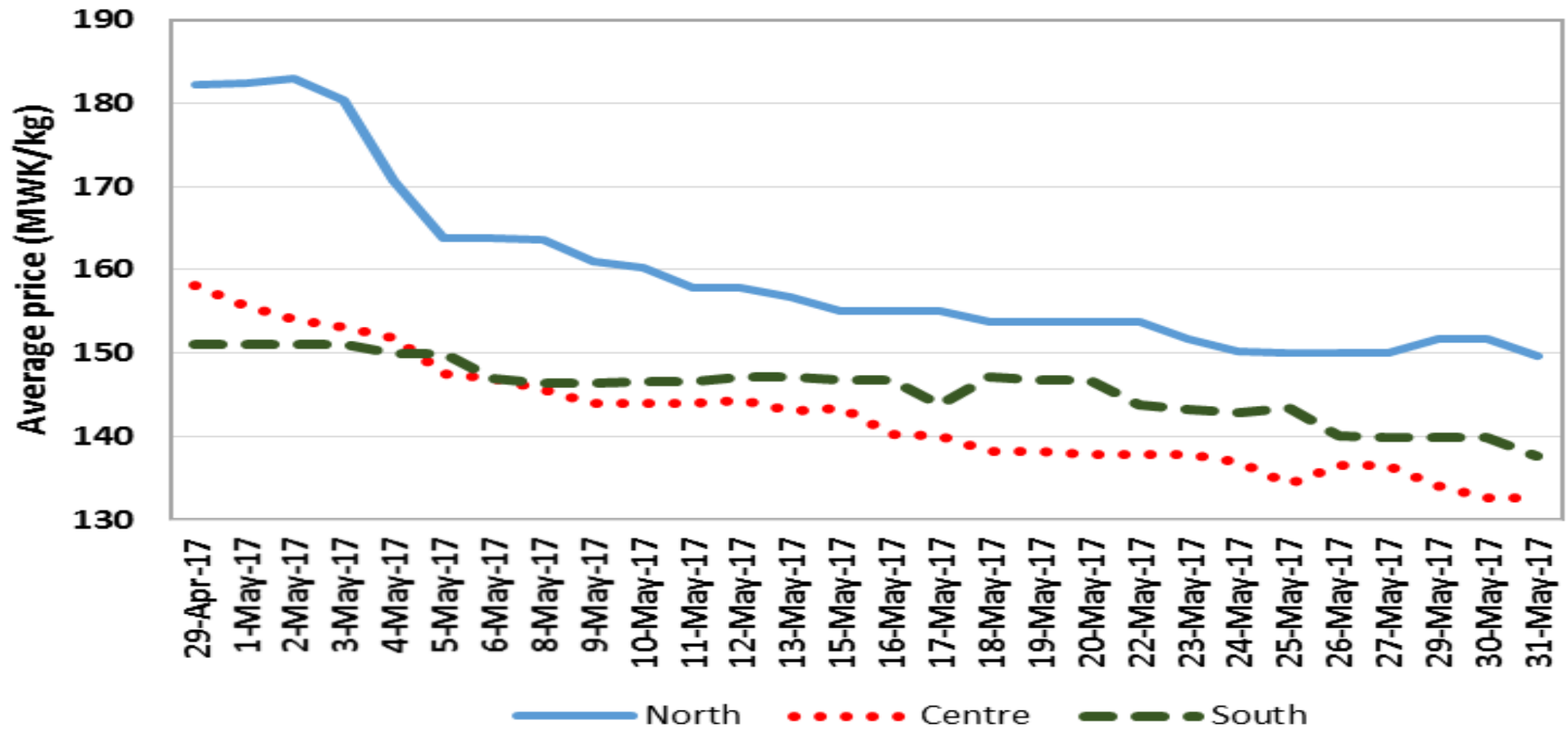
Agricultural Market Information System (AMIS) Price Data (2017) in Different Locations (mk/kg)

		2-Apr-17	9-Apr-17	16-Apr-17	23-Apr-17	
DISTRICT	MARKET	Week 1	Week 2	Week 3	Week 4	AVERAGE
KARONGA	KARONGA		192.44	215.05	288.57	232.02
KARONGA	CHILUMBA	229.19	221.42	206.16	188.17	211.24
MZIMBA	MZUZU	180.00	175.00	175.00	150.00	170.00
MZIMBA	JENDA	172.39	172.08	170.02	166.67	170.29
SALIMA	SALIMA	180.00	160.00	160.00	160.00	165.00
NTCHISI	NTCHISI	180.00	180.00	160.00	160.00	170.00
NTCHISI	MALOMO	221.00	200.00	190.00	165.00	194.00
KASUNGU	KASUNGU	210.00	200.00	200.00	210.00	205.00
LILONGWE	KASIYA	70.00	75.00	65.00	60.00	67.50
LILONGWE	LILONGWE	95.00	95.00	95.00	95.00	95.00
LILONGWE	MITUNDU	155.80	153.45	150.24	100.00	139.87
NTCHEU	NTCHEU	180.74	150.75	103.48	101.25	134.06
BALAKA	BALAKA	155.09	154.24	146.42	140.08	148.96
MACHINGA	NAMWERA	172.32	150.82	107.73	105.22	134.02
MANGOCHI	MANGOCHI	190.14	145.42	120.83	100.69	139.27
PHALOMBE	PHALOMBE	70.00	90.00	85.00	78.00	80.75
NSANJE	NSANJE	201.86	186.15	144.34	133.62	166.49

Table 1. Maize retail prices (MK/kg) by market

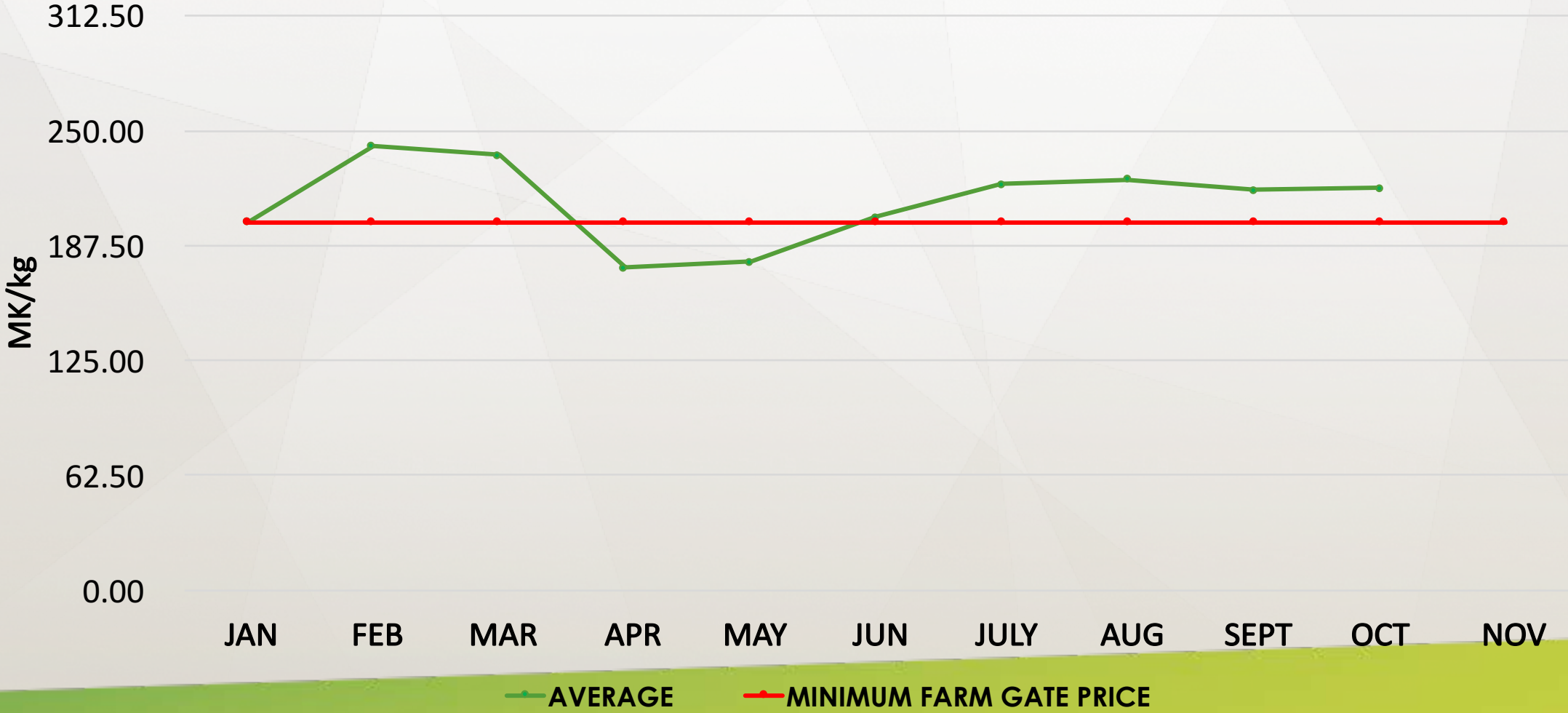
Market	29-Apr-17	13-May-17	27-May-17	31-May-17	Monthly change
Karonga	210	168	168	168	↓ -20%
Rumphu	178	163	149	148	↓ -17%
Mzimba	169	150	144	143	↓ -15%
Mzuzu	172	147	139	139	↓ -19%
Nkhamenya	160	135	133	133	↓ -17%
Mchinji	149	144	144	138	↓ -8%
Mponela	168	157	140	135	↓ -20%
Mitundu	160	140	135	133	↓ -17%
Chimbiya	157	140	128	123	↓ -22%
Liwonde	145	142	133	133	↓ -8%
Lunzu	190	188	167	167	↓ -12%
Mulanje	158	142	142	142	↓ -11%
Mwanza	124	128	123	123	↓ -1%
Chikwawa	170	160	161	148	↓ -13%
Nsanje	125	127	120	120	↓ -4%
All markets	162	148	141	139	↓ -14%

Source: IFPRI Monthly Maize Price Monitoring Report: April-May 2017



Source: IFPRI Monthly Maize Price Monitoring Report: April-May 2017

Retail Nominal Prices of Maize in Malawi (AMIS-2016)



THANK YOU