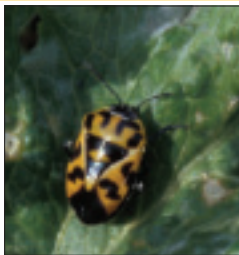


[Back to IPM scouting in herbaceous perennials.](#)

**Chewing pests**

## **Harlequin bug**

Harlequin bug adults are 10 mm long, robust and shield-shaped. Adults are brightly colored in black and red-orange with distinct yellow markings. There is a black X on the thorax.

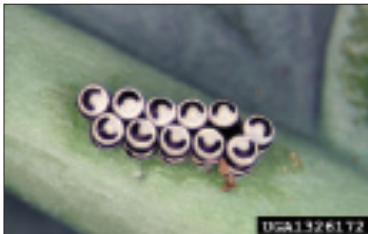


10 mm

## Harlequin bug – *continued*

Harlequin bug adults and nymphs use their piercing-sucking mouthparts to withdraw plant fluids, causing plants to wilt, turn brown and possibly die. Nymphs resemble adults but are smaller and lack wings.

Eggs are laid on leaf under-sides and are very distinctive, resembling tiny white kegs standing on end in a double row. Each egg



has two dark bands, one near the top and one near the bottom. Harlequin bug overwinters as an adult.

**Management:** Remove weeds and plant debris from adjacent areas that may serve as over-wintering sites. Keep grassy areas mowed during the spring and summer. Contact insecticides may be effective in controlling harlequin bug adults and nymphs.