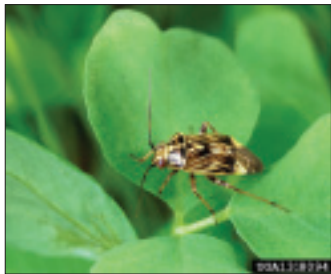
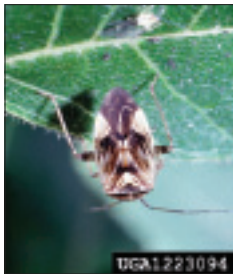


## Sucking pests

### Tarnished plant bug

Feeding by tarnished plant bug adults and nymphs causes yellowing of terminal growth, which becomes twisted and distorted. In addition, leaves may appear ragged and discolored. Flowers may fail to develop, or the flower buds may abort. Tarnished plant bug overwinters as an adult.



Tarnished plant bug adults are 3 to 6 mm long, oval-shaped, and mottled brown with several small black, brown, red or yellow markings on the body. A white or black triangle is typically visible on the front of the abdomen. The antennae and legs are relatively long.



**Management:** Remove weeds and plant debris from adjacent areas. Contact insecticides may be applied when nymphs and adults are present.