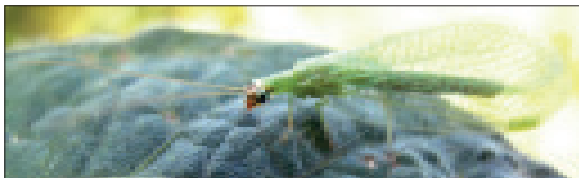


Green lacewing

Chrysopidae

Adults: Pale green body. Large, transparent, pale green wings. Long, thin antennae.



Length: 12-20 mm

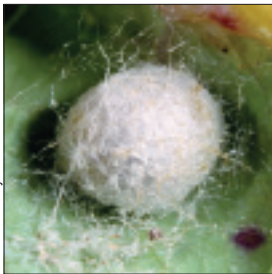


Eggs: Several hundred small eggs per female laid on thin stalks.

An egg on a stalk compared with a penny. The egg is to the left of the eyebrow.

Green lacewing – *continued*

Larvae: Gray to brown and alligator-like. Large, sickle-shaped mandibles. Head similar in width to the pronotum.



Pupae: Enclosed inside round, silken cocoons attached to plant material. Some species pupate in the soil.

Photo: Peter Bryant

Diet: Larvae eat aphids, caterpillars, beetle larvae and insect eggs. Adults may feed on insects or pollen, depending on species.