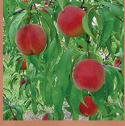




Stone Fruit IPM for Beginners

Developed by the Great Lakes Fruit Workers and funded by a working group grant from the North Central Integrated Pest Management Center



Chapter 27

Plum curculio

Julianna Wilson, Michigan State University, Department of Entomology

Plum curculio

Conotrachelus nenuphar (Herbst)

Hosts

All 

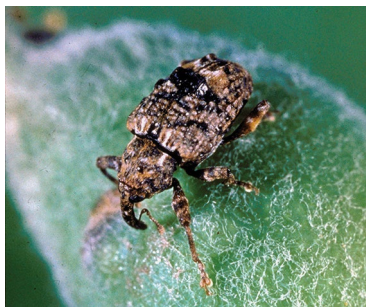
Time of concern

Beginning shortly after petal fall.

Damage, symptoms and pest cycle

Attacks all deciduous tree fruits. The larvae bore into and create galleries in stone fruits. In August, the adults that will overwinter in the north, or those that will produce a second generation in the south, feed on fruits before seeking overwintering sites in leaf litter near the orchard. Some oviposition of this brood also results in larval fruit infestations in late summer.

The adult is mottled grayish black and brown. Its head is prolonged into a large but short snout that bears antennae. Each elytron has a series of humps with the second and third pairs separated by a clear transverse band.



Clemson Univ, USDA Coop Exten Slides, Bugwood.org



Krawczyk

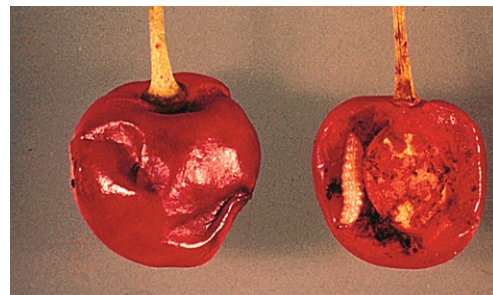
Injury during peach shuck.



NYSAES

Injury on peach fruit.

The white elliptical eggs are deposited under the skin of the fruit in a crescent-shaped slit. The whitish larva, with no functional legs, has a C-shaped body, an elliptical head and a brown thoracic shield.



A larva with damage in cherries.

NYSAES



NYSAES

IPM steps for beginners

Monitor regularly for fresh damage on fruit. Apply protective sprays during the egg-laying period, starting at petal fall; a degree-day model can be used to predict the portion of the oviposition period during which insecticide protection would be required.