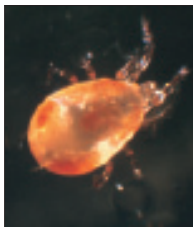


Back to IPM scouting in woody landscape plants.

Natural enemies -- Predatory mites

Predatory mites are similar in size and shape to pest species but are faster moving. The phytoseiid mite *Phytoseiulus persimilis*, (below left) is non-native and is used commercially for biological control of spider mites adults and eggs under greenhouse conditions. Other native species in this family (Phytoseiidae) feed on eriophyid mites and spider mites in the landscape, such as the *Amblysius fallicis* shown at right.



The size of the mite is less than 0.5 mm.