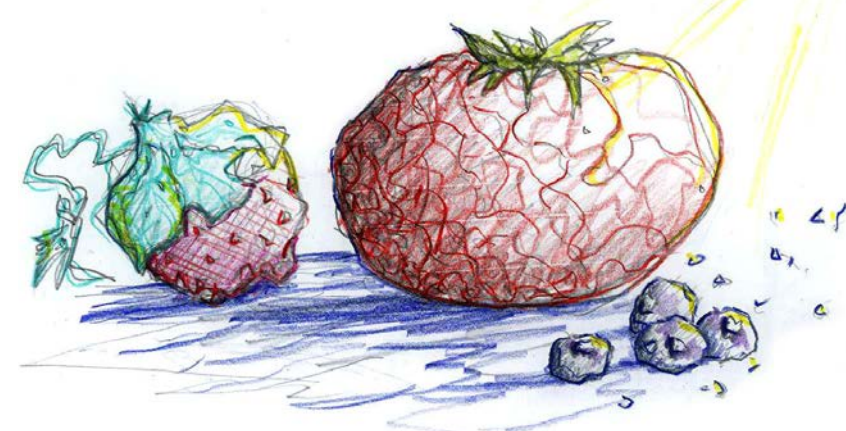


Site Notes



Community Garden

- Fenced Crop Area
- Sculptures
- Row Gardens
- Gazebo
- Existing Residential



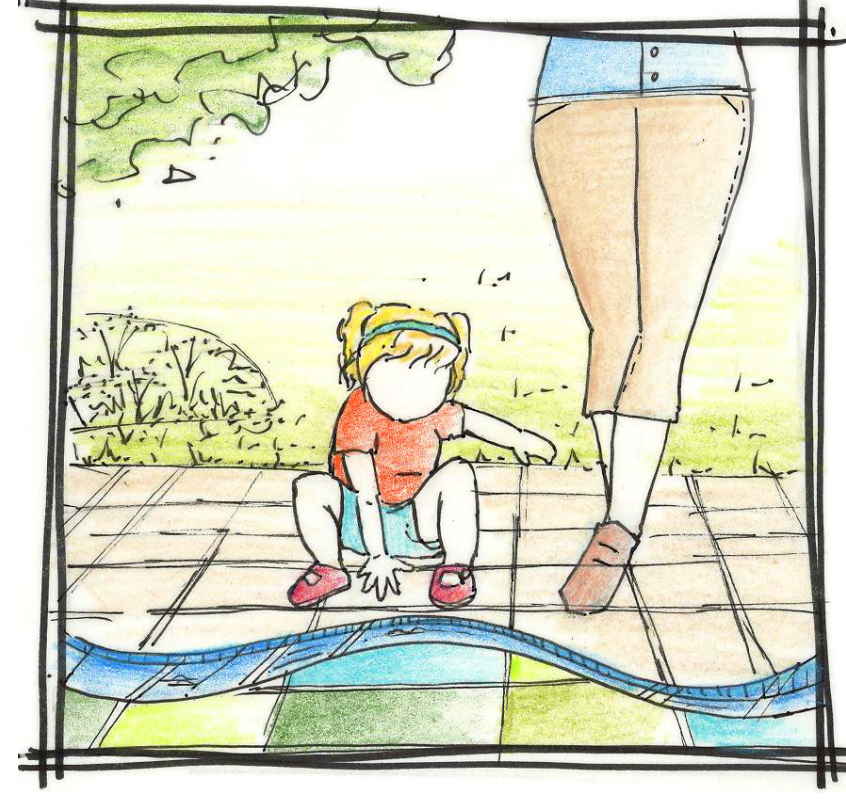
Webberville Park

- Rain Garden
- Bench
- Seat Walls
- Kalamink Creek
- Picnic Area
- Gazebo
- Patchwork Garden
- Bike Path
- Trolley Stop



Trolley Station

- Trolley Station/BRT Stop
- Information Station
- Pedestrian Plaza
- Johnny's Country Oven
- Outdoor Patio
- Retail
- Patchwork Garden Space
- Picnic Area
- Swinging Park Bench
- Green Space
- Parking
- Trolley Parking
- Existing Residential



# RURAL FABRIC

Composite urban pattern of streets, buildings, and open spaces - the "fabric" of the city  
 - Collin Rowe in Roger Trancik's, *Finding Lost Space*



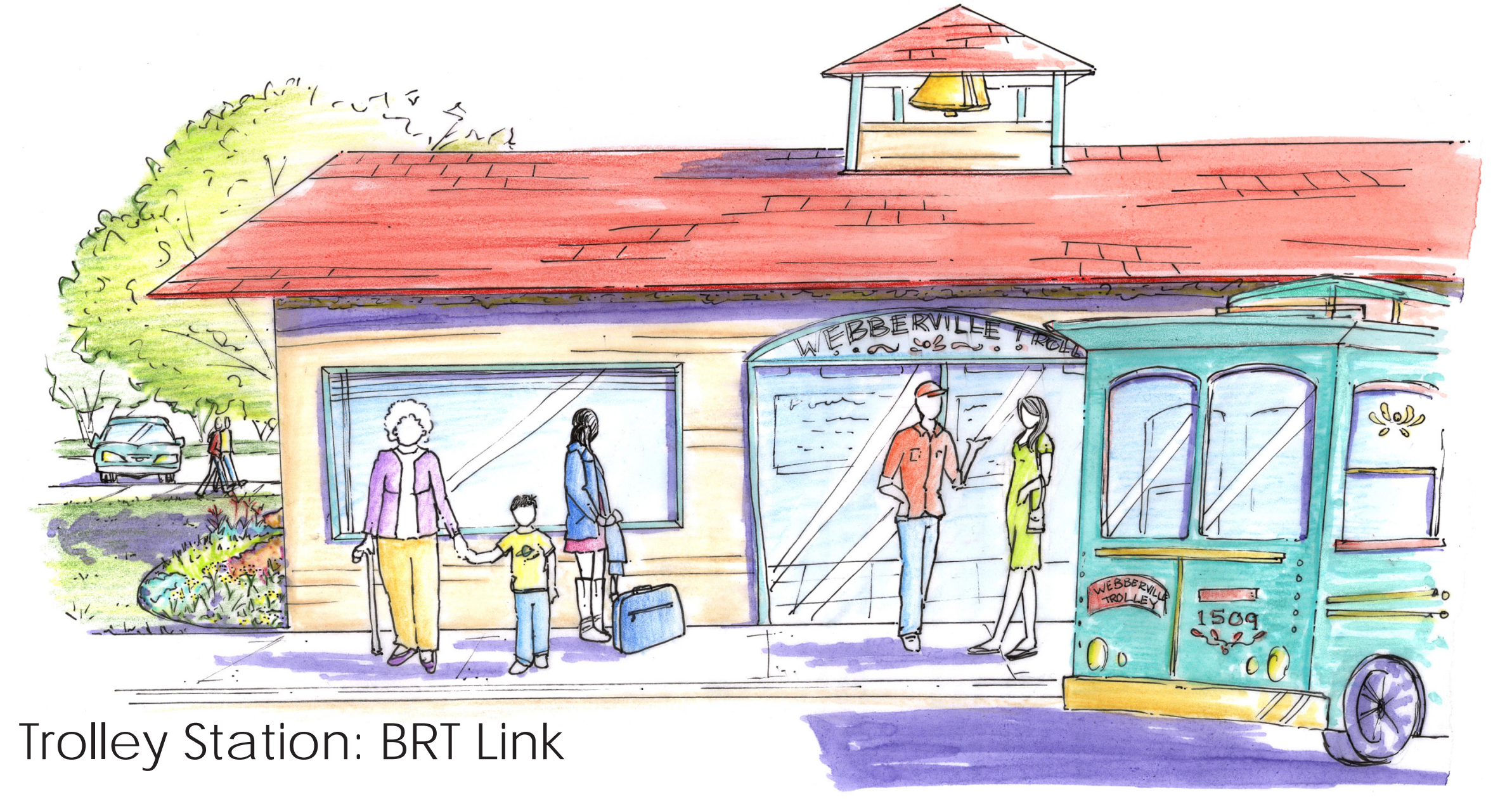
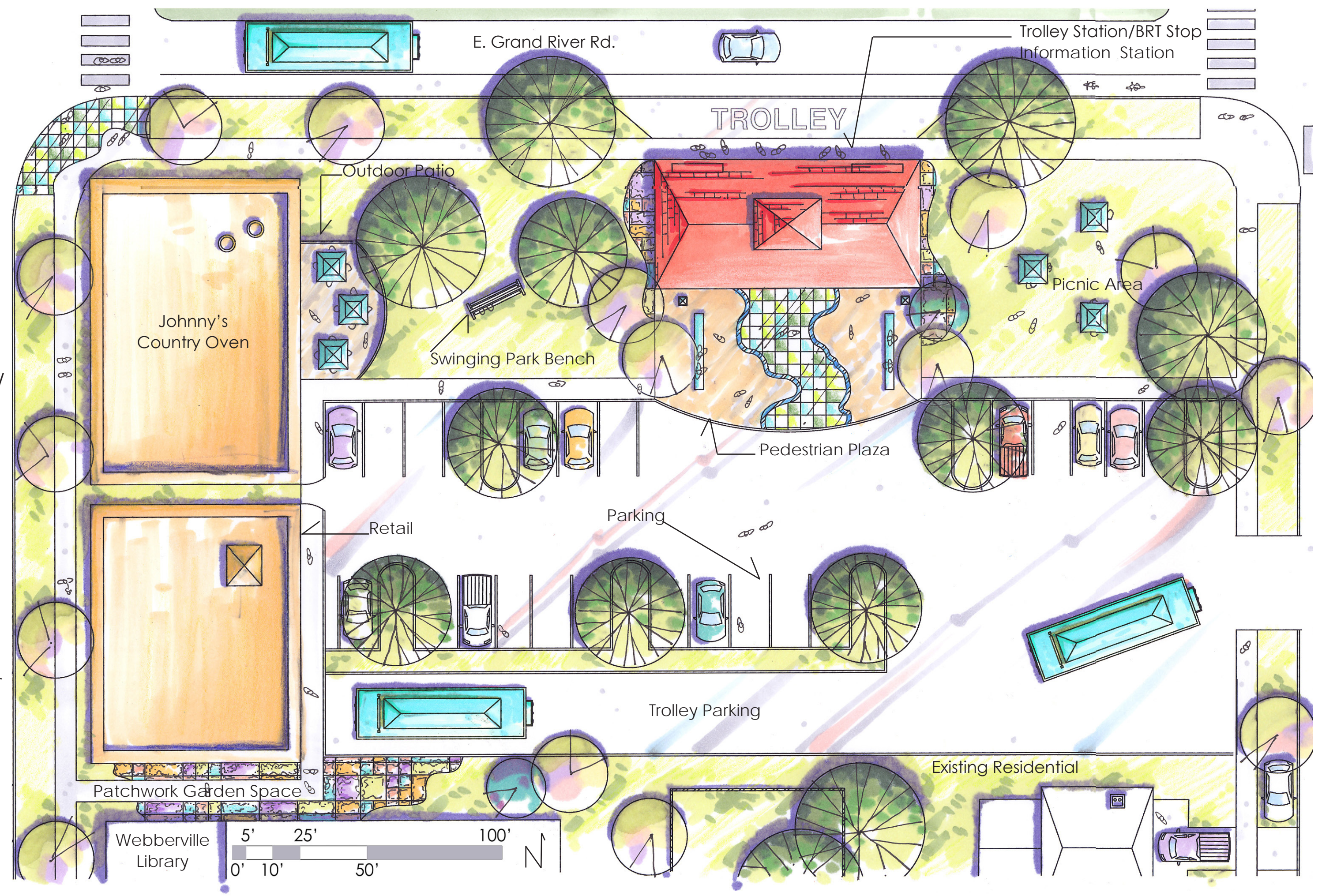
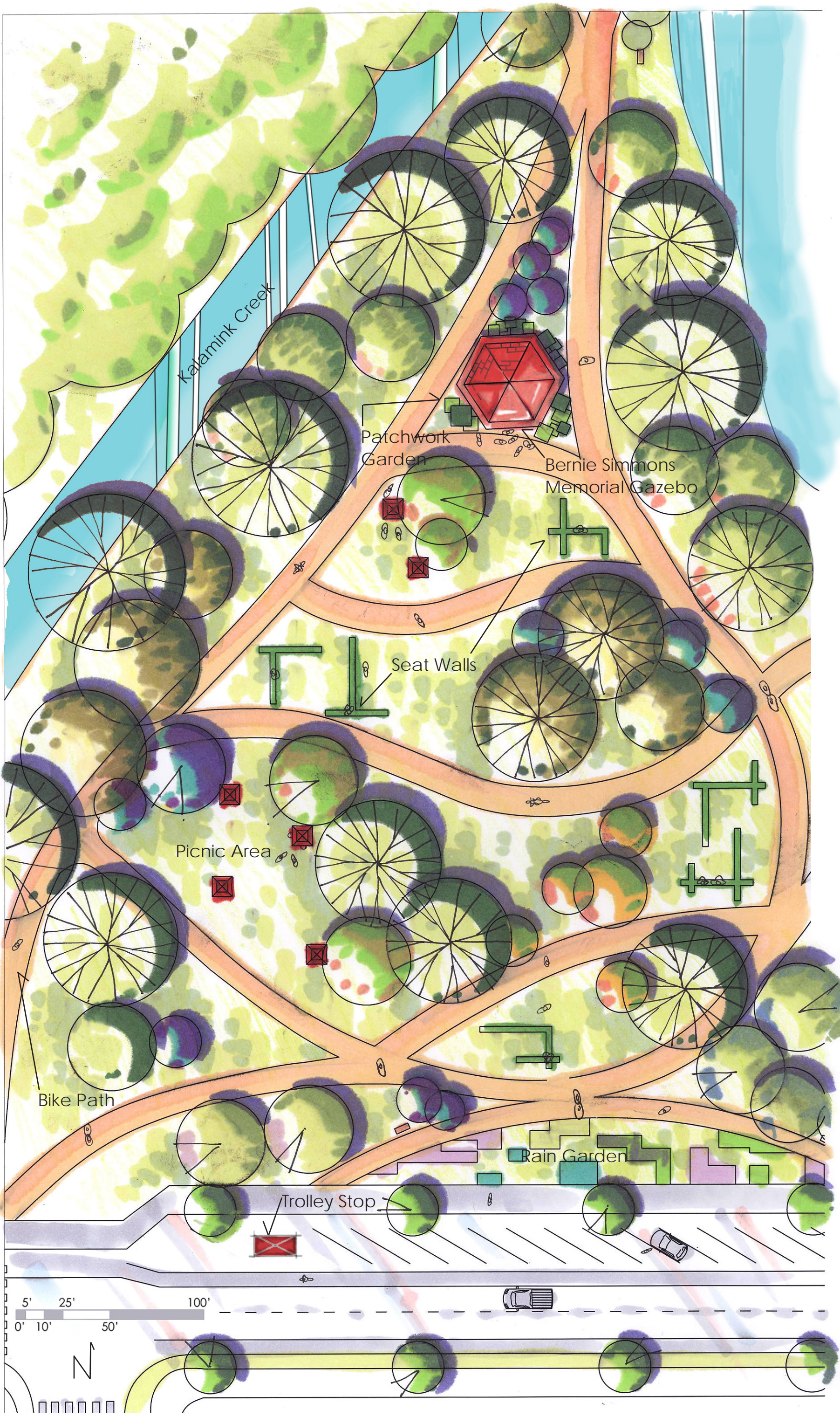
## Community Garden

Across from the historic elementary school of Webberville is the Community Garden. The designated crop areas give the entire community a hands-on educational area where they can come together and engage in activities they enjoy. This garden also acts as a place of relaxation. Pieces of art balance out the plantings, creating an aesthetically pleasing experience as visitors stroll through. The garden's very own gazebo gives patrons a place to rest and enjoy the surrounding area. The character of this gazebo is reminiscent of the Bernie Simmons gazebo located in the Webberville Park. The similar style creates a personality that ties the two patches of Webberville together.



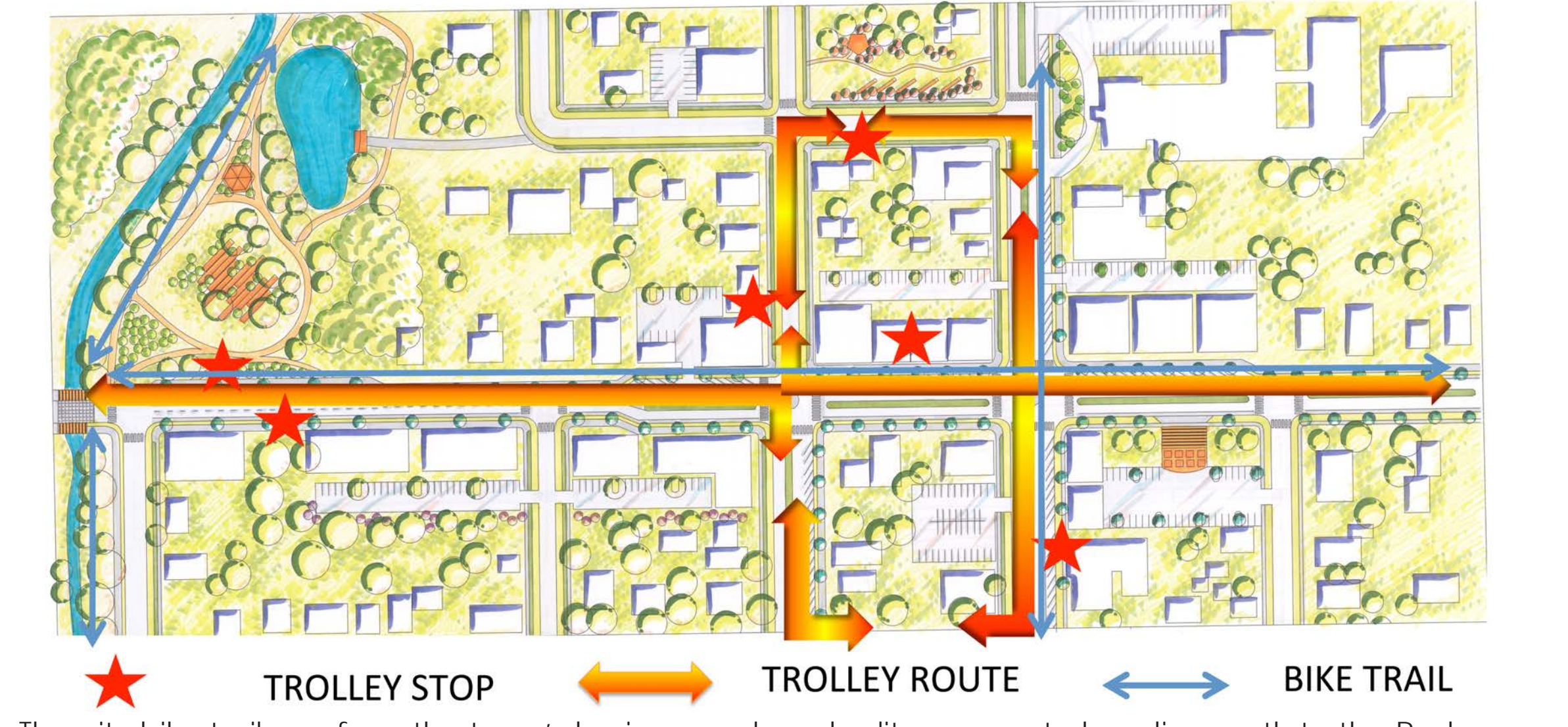
## Webberville Park

Nestled along the Kalamink Creek is the Webberville Park. Attracting vehicular traffic from Grand River and pedestrian traffic from the trail system, the green space greets visitors with a rain garden full of lively vegetation. The trail continues creating an interesting walking or riding experience. Located in the heart of the park are small seat wall enclosures. These spaces are for park users to share with one another or for individual contemplation. The spaces are surrounded by trees and shrubs for shade and privacy. The space is also home to picnic areas for members of the community. Further into the park is the newly located Bernie Simmons Memorial gazebo. This iconic town structure is tucked back in the park to reduce noise from Grand River.



## Trolley Station: BRT Link

In the heart of downtown where Main Street meets Grand River are the Webberville Trolley Station and the Bus Rapid Transit stop. The trolley, running primarily on weekends, connects the village of Webberville to Meridian Township. It is a fast, environmentally friendly passage to downtown Lansing. Similar to Lansing's Entertainment Express, it will stop at major points of interest within the village of Webberville such as the Community Garden, Recreation Hall and the Fool's Gold Saloon. Once the trolley leaves Webberville it travels directly to Meridian where it provides riders a connection to Lansing. The trolley becomes an attractant to the town, allowing visitors to explore the town.



The city bike trail runs from the town's business park and splits, one route heading north to the Red Cedar and another East to the Webberville Schools. The installation of the bike trail and the continuation of new sidewalks through the town are an effort to promote the safe routes to school program.

## Webberville, MI Design Vision

Katie Barry  
 Hongwei Tian  
 Maleah Beatty  
 Connections of Scale: LA 344

