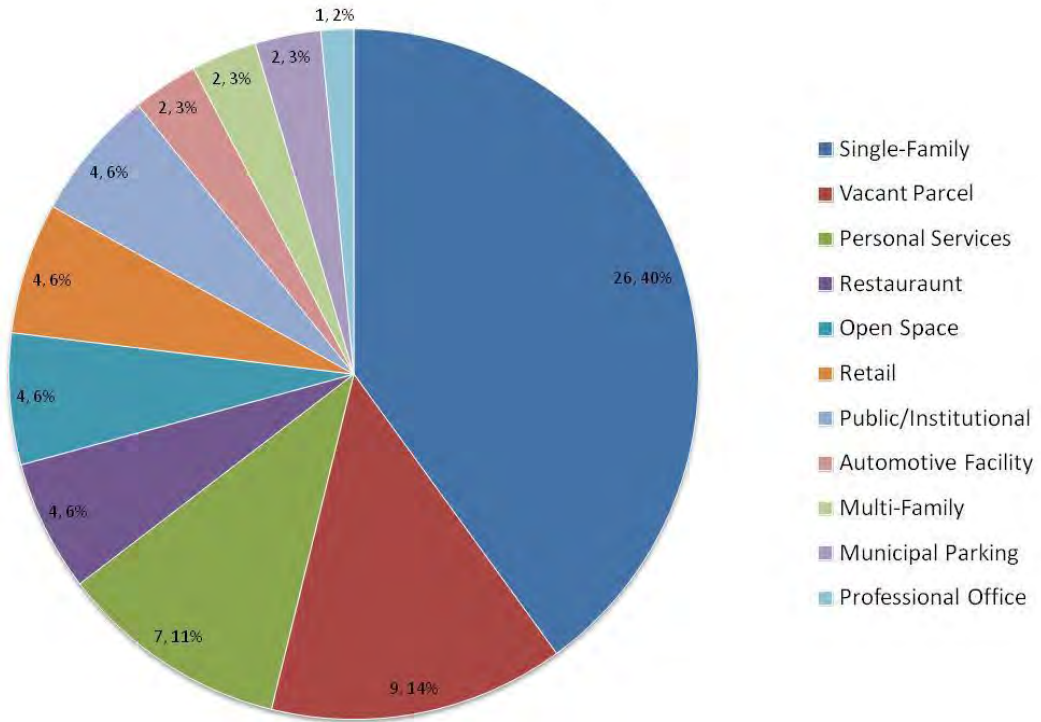


DOWNTOWN WEBBERVILLE

Katie Barry
Hongwei Tian
Maleah Beatty

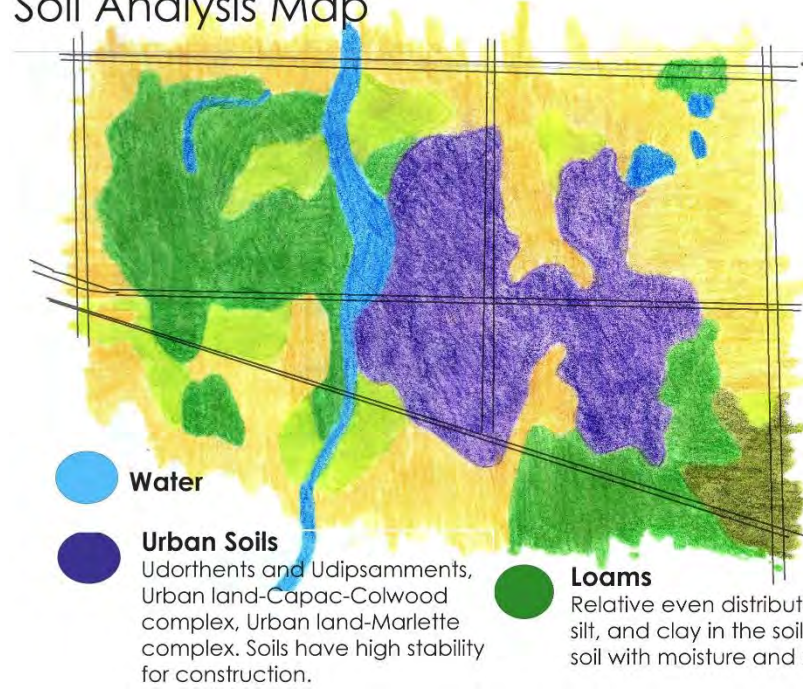
Current Land Use



Downtown Webberville Current Land Use Map



Soil Analysis Map



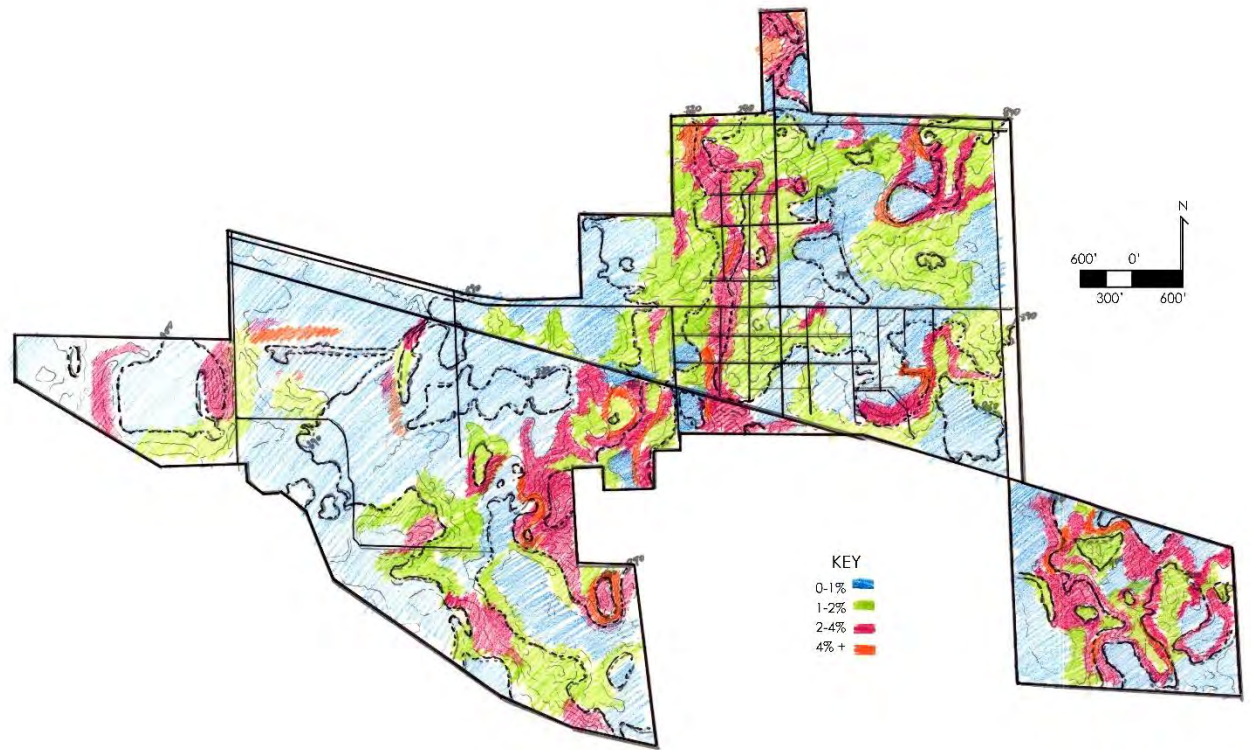
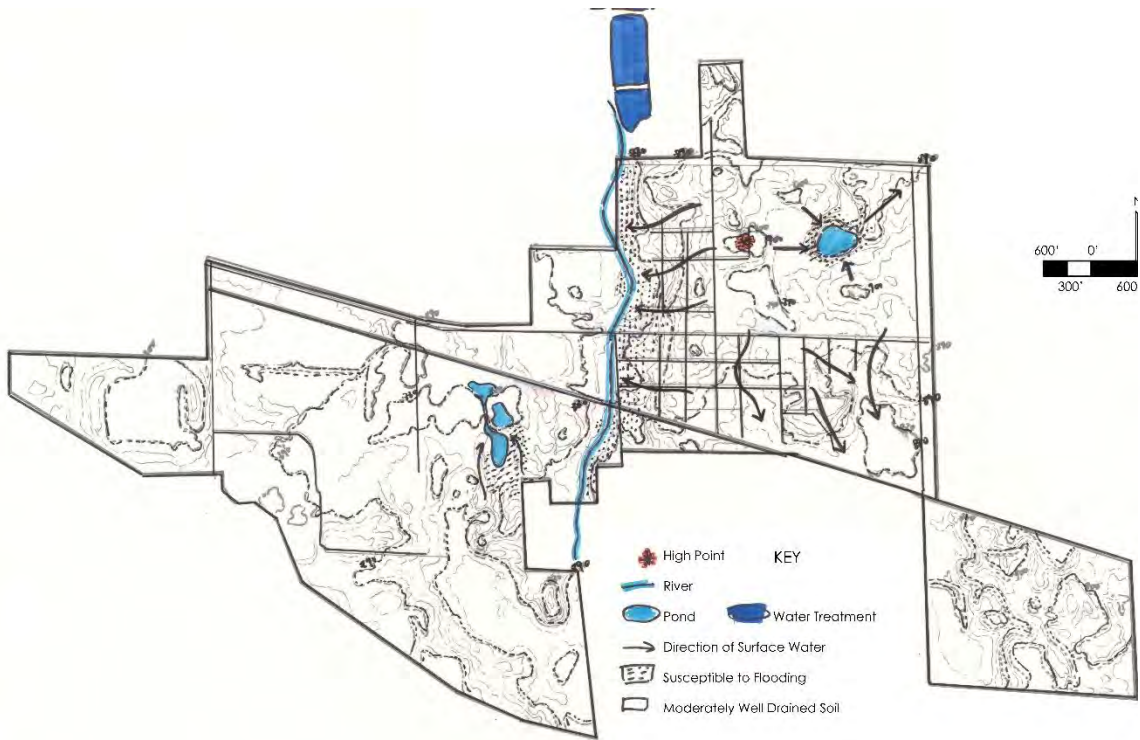
- Sandy Loams**
Referred to as "select fill" due to the compaction capabilities and stability.
- Loamy Sand**
Sandy and clayey soils, highly compactible, poorly drained.
- Aurelius Muck**
Consists of very deep, very poorly drained soils formed in thin organic deposits overlying marly material that is underlain by loamy material. Located in depressional areas.

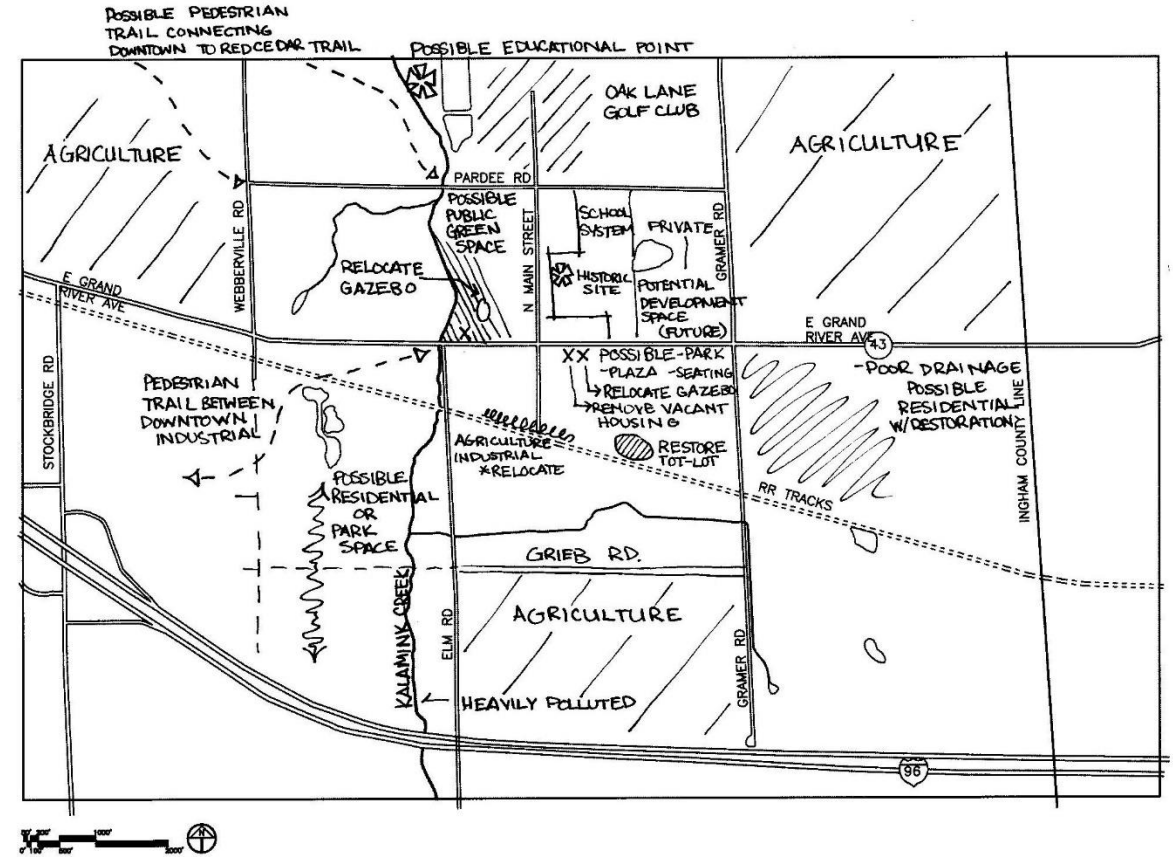
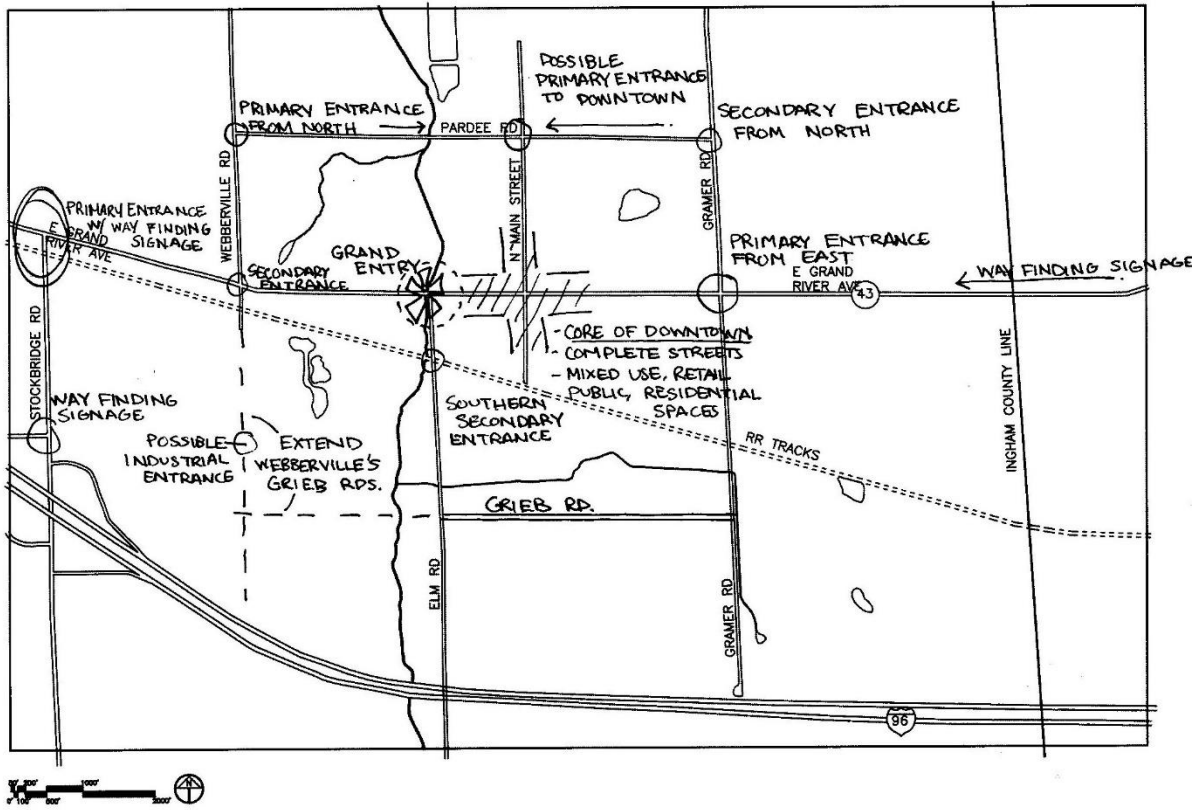
*Not to Scale

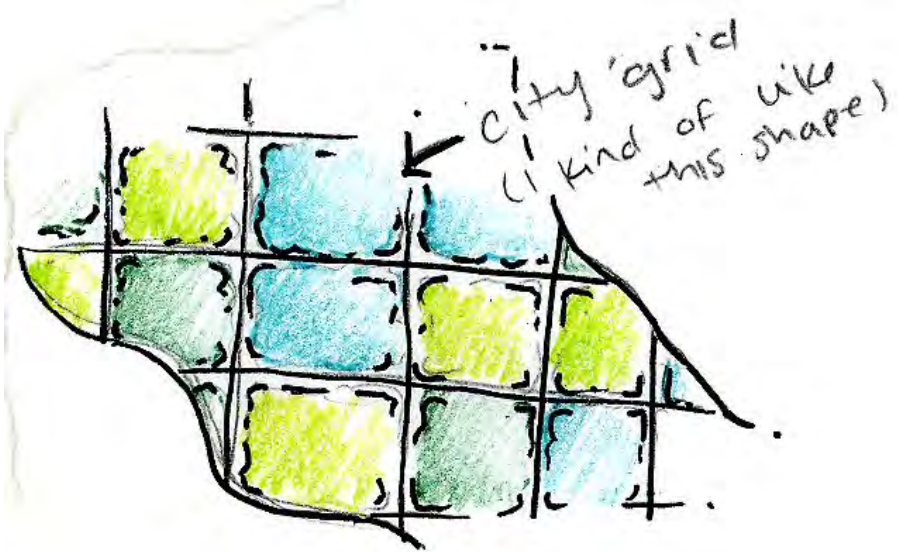


- KEY**
- Upland Forest: Moderate
 - Lowland Forest: Moderate
 - Grassland: Moderate
 - Lowland Forest: High
 - Grassland: High
 - Open Wetland: Moderate
 - Pasture/Parks: Moderate
 - Pasture/Parks: High
 - Open Wetland: High

* High and Low refer the coverage of vegetation type and core area density

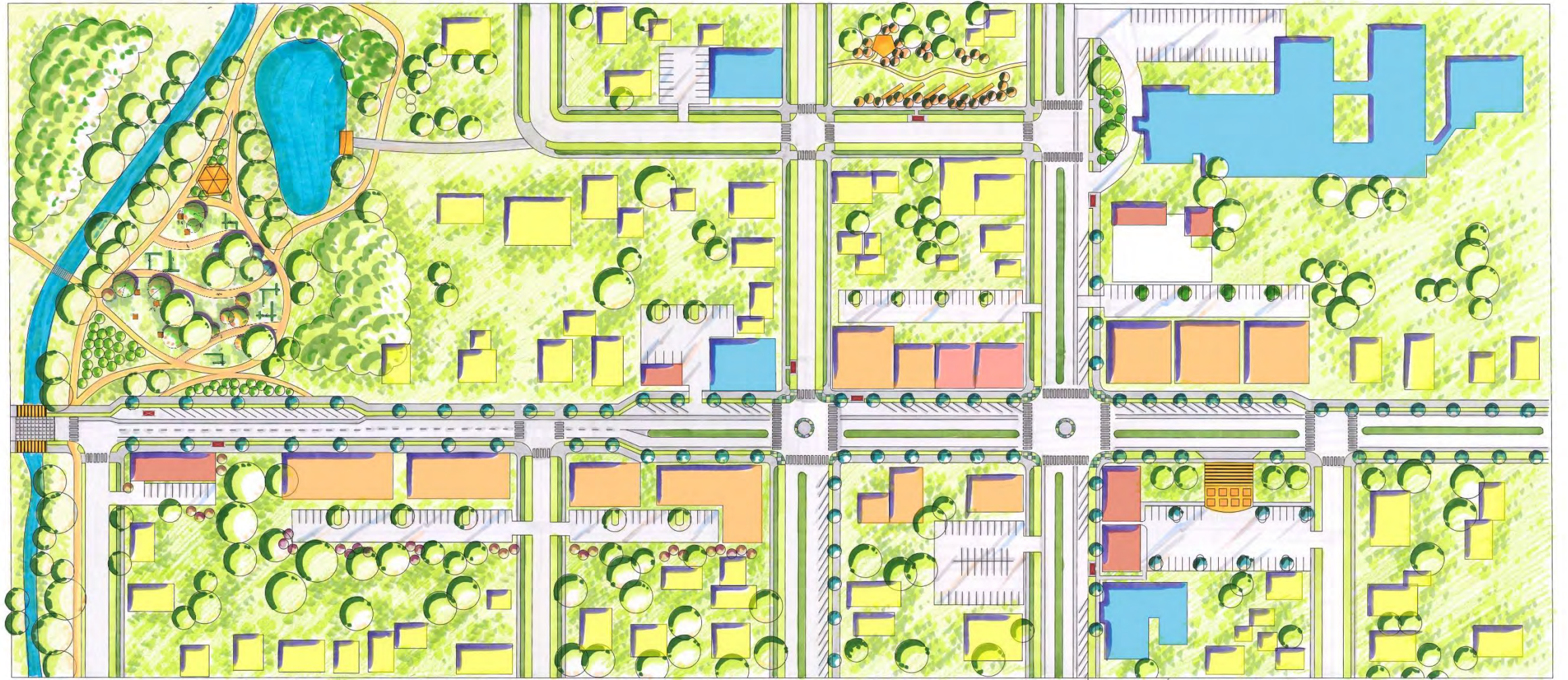


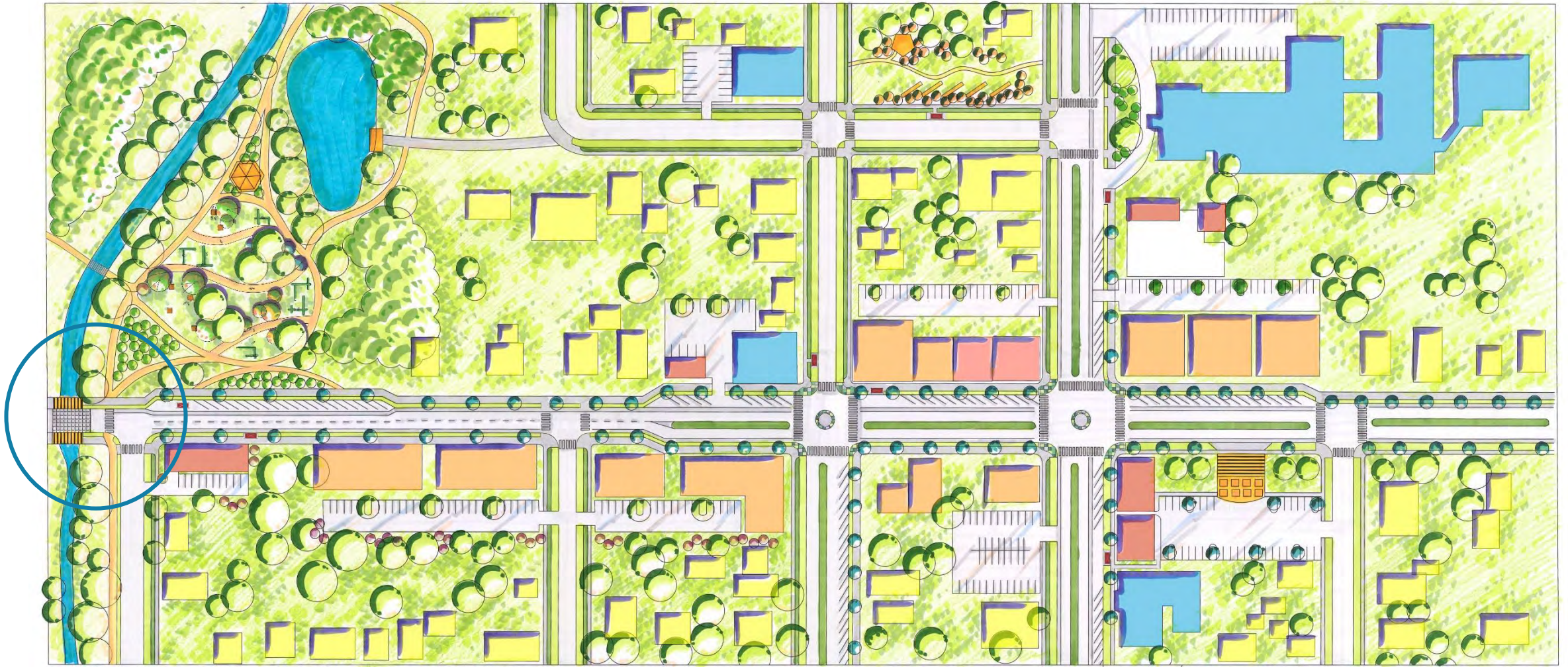


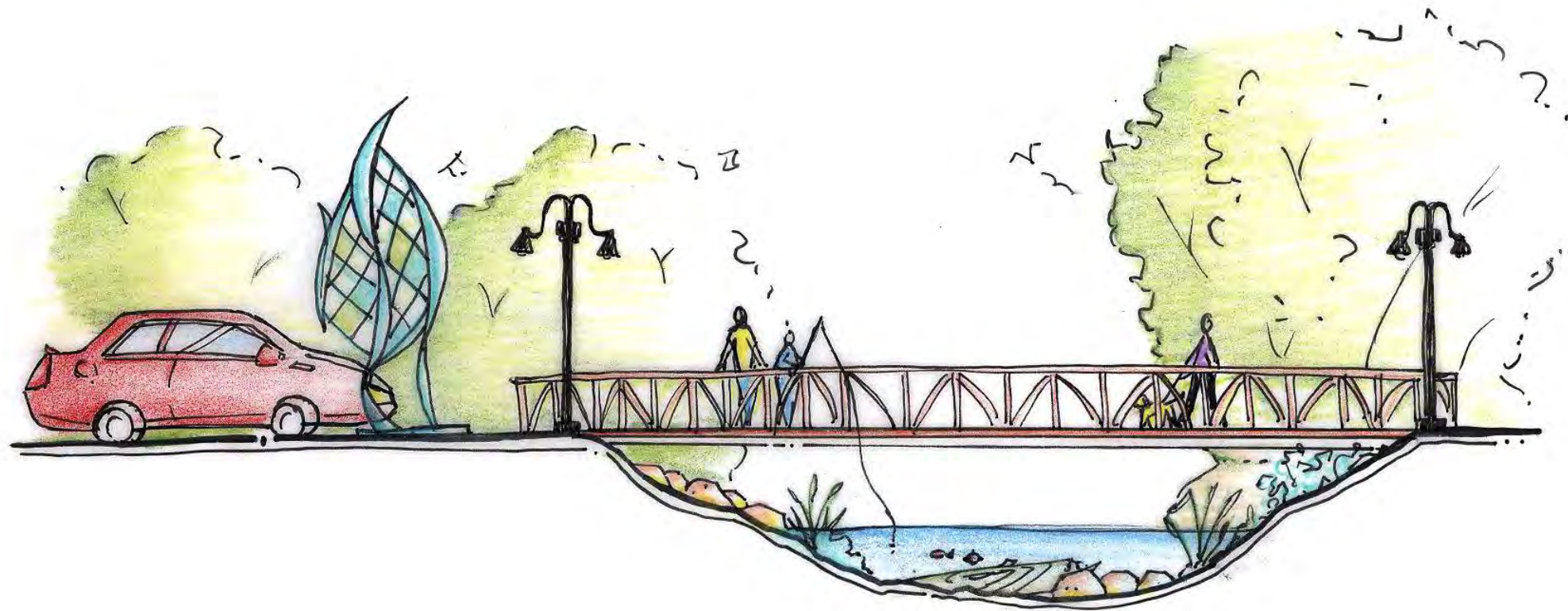


GOAL&OBJECTIVES

1. Define downtown identity
2. Draw people to, not through or around
3. Expand public green spaces throughout the village





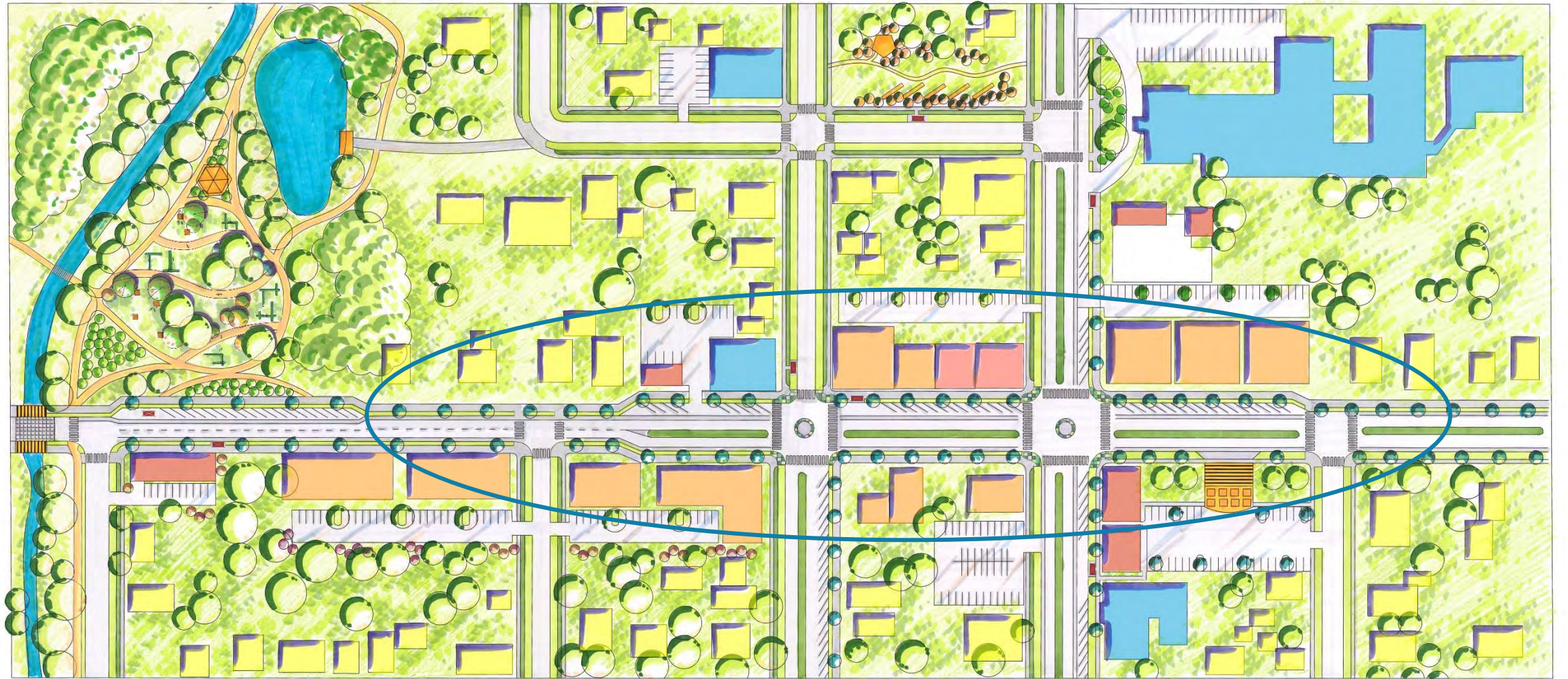






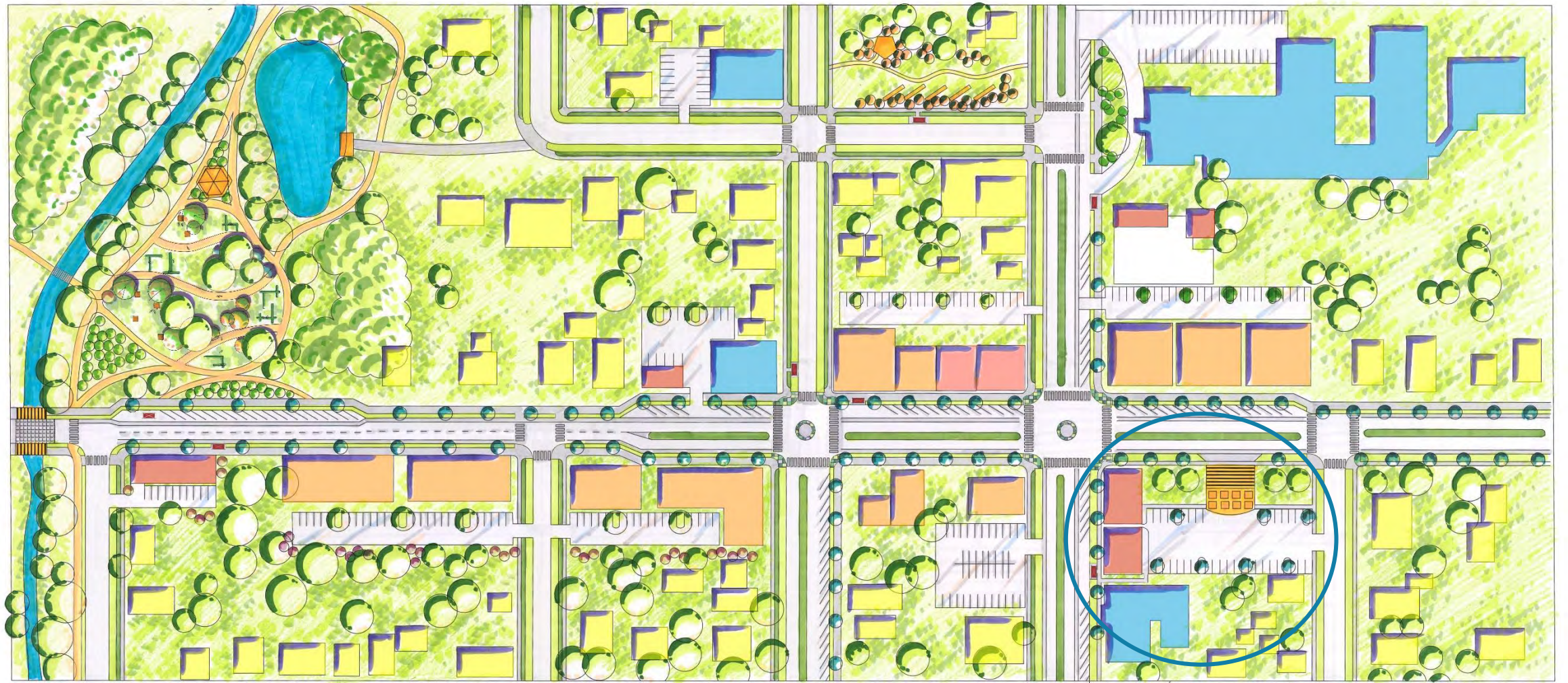


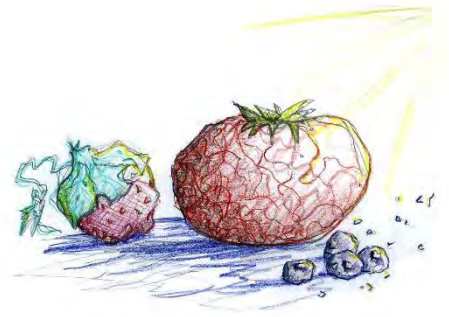
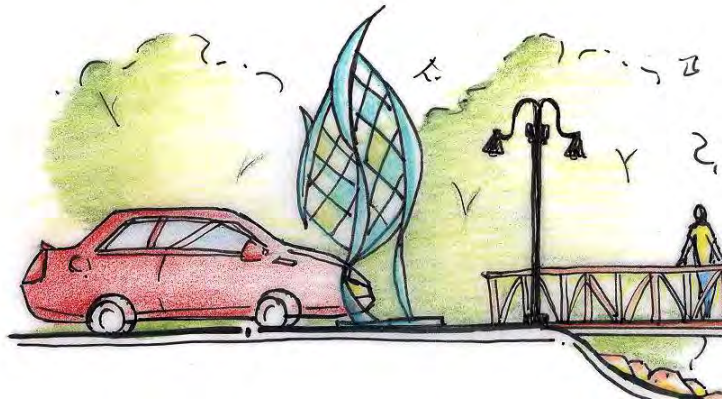
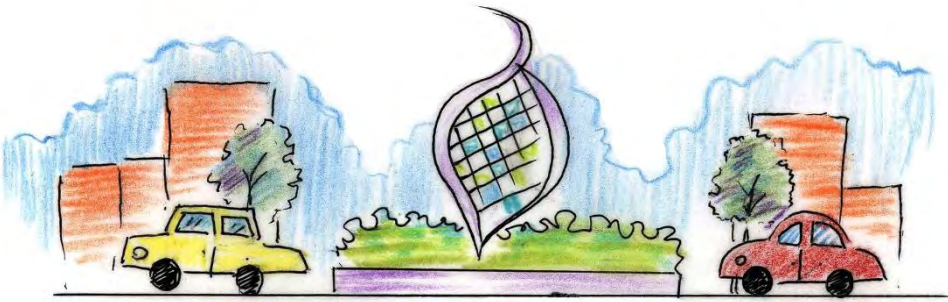
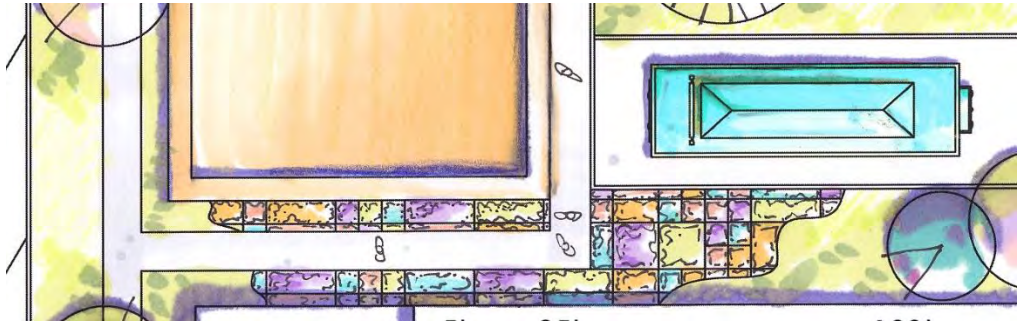
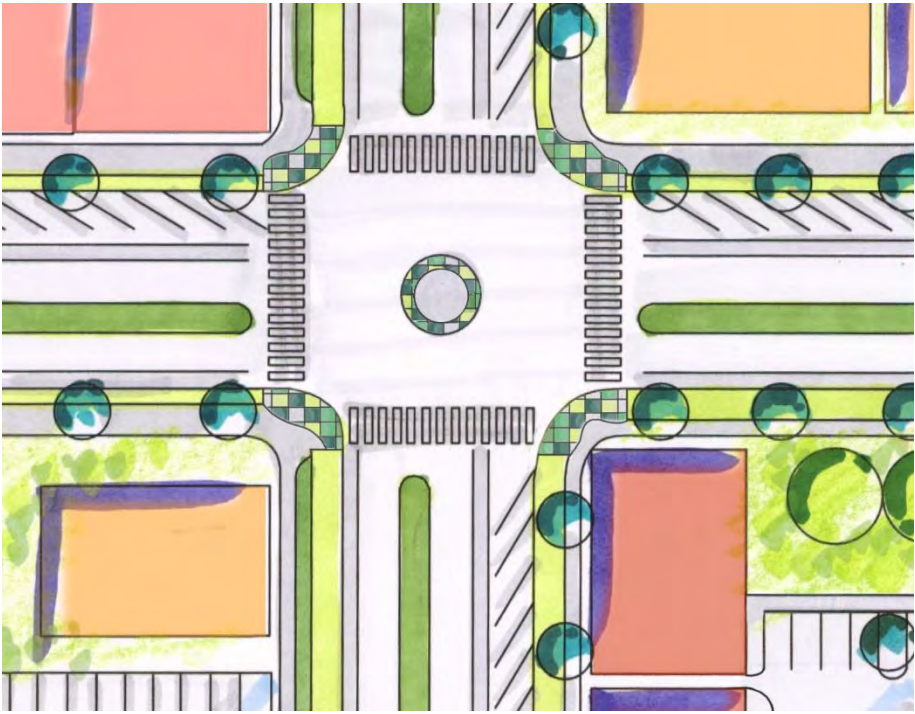




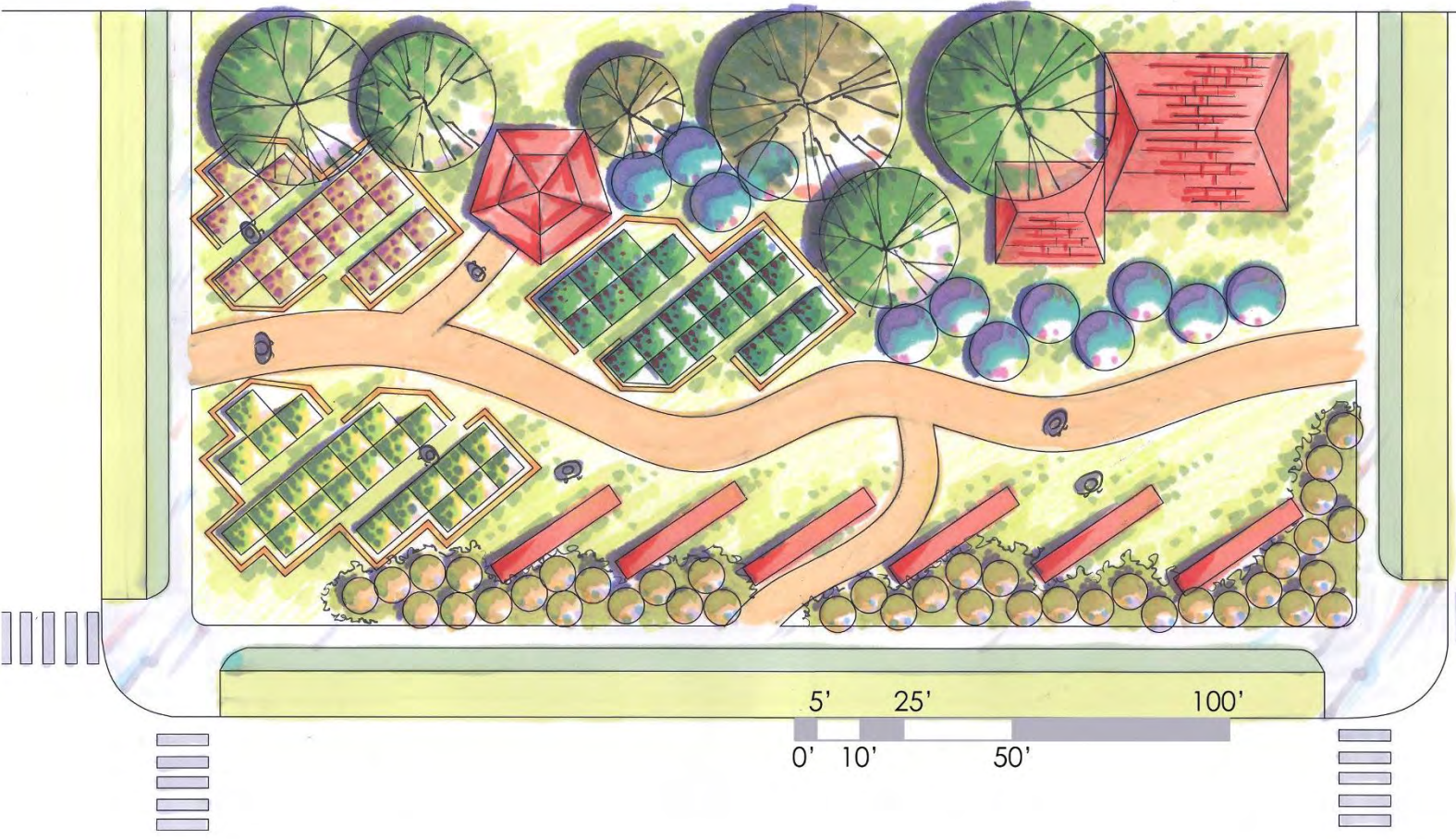


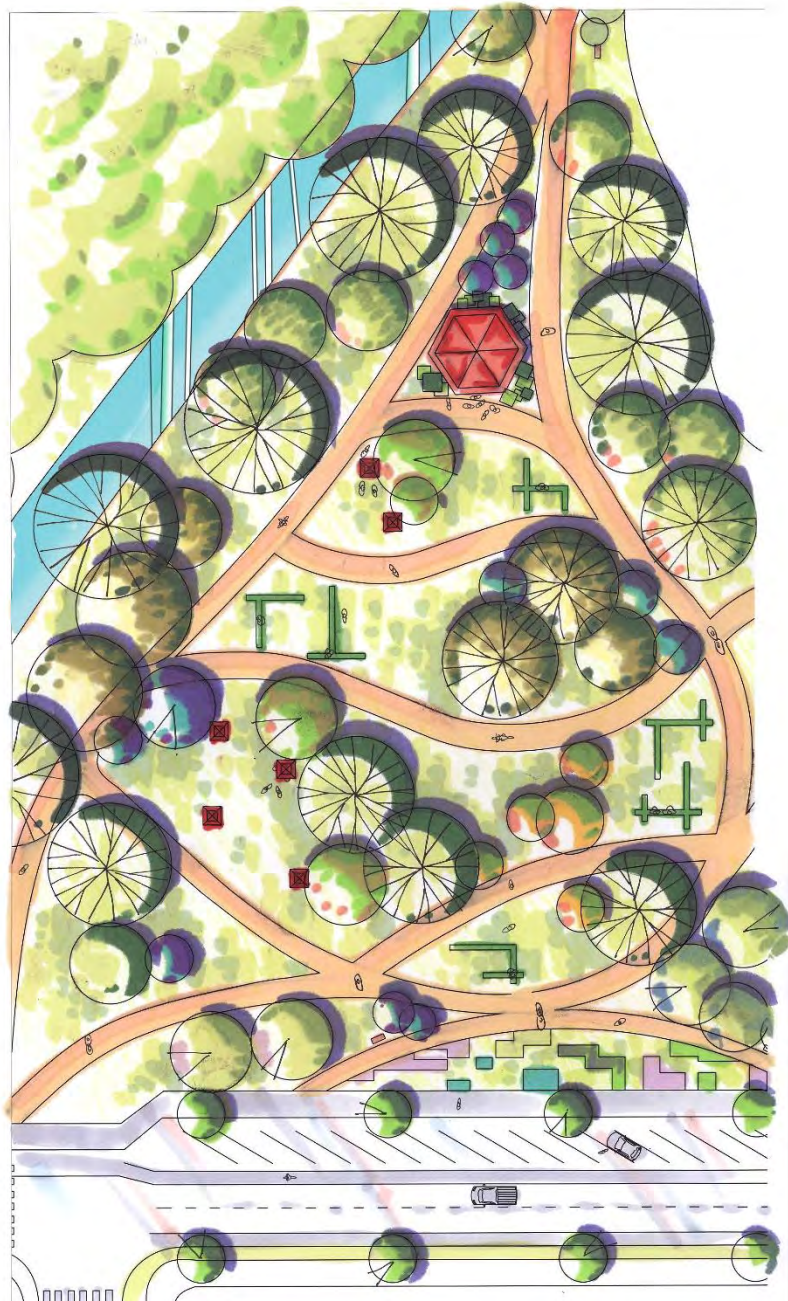


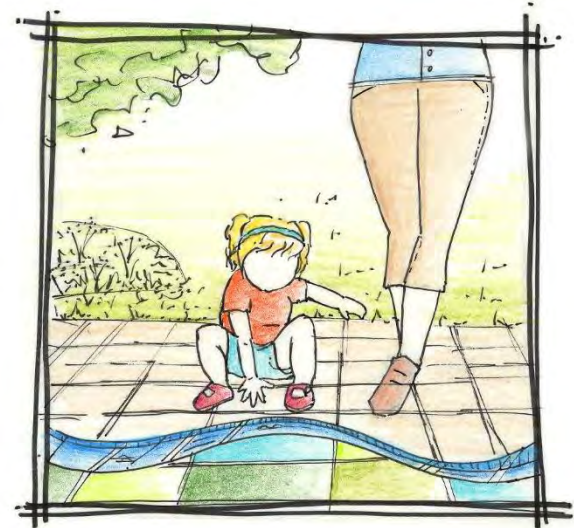
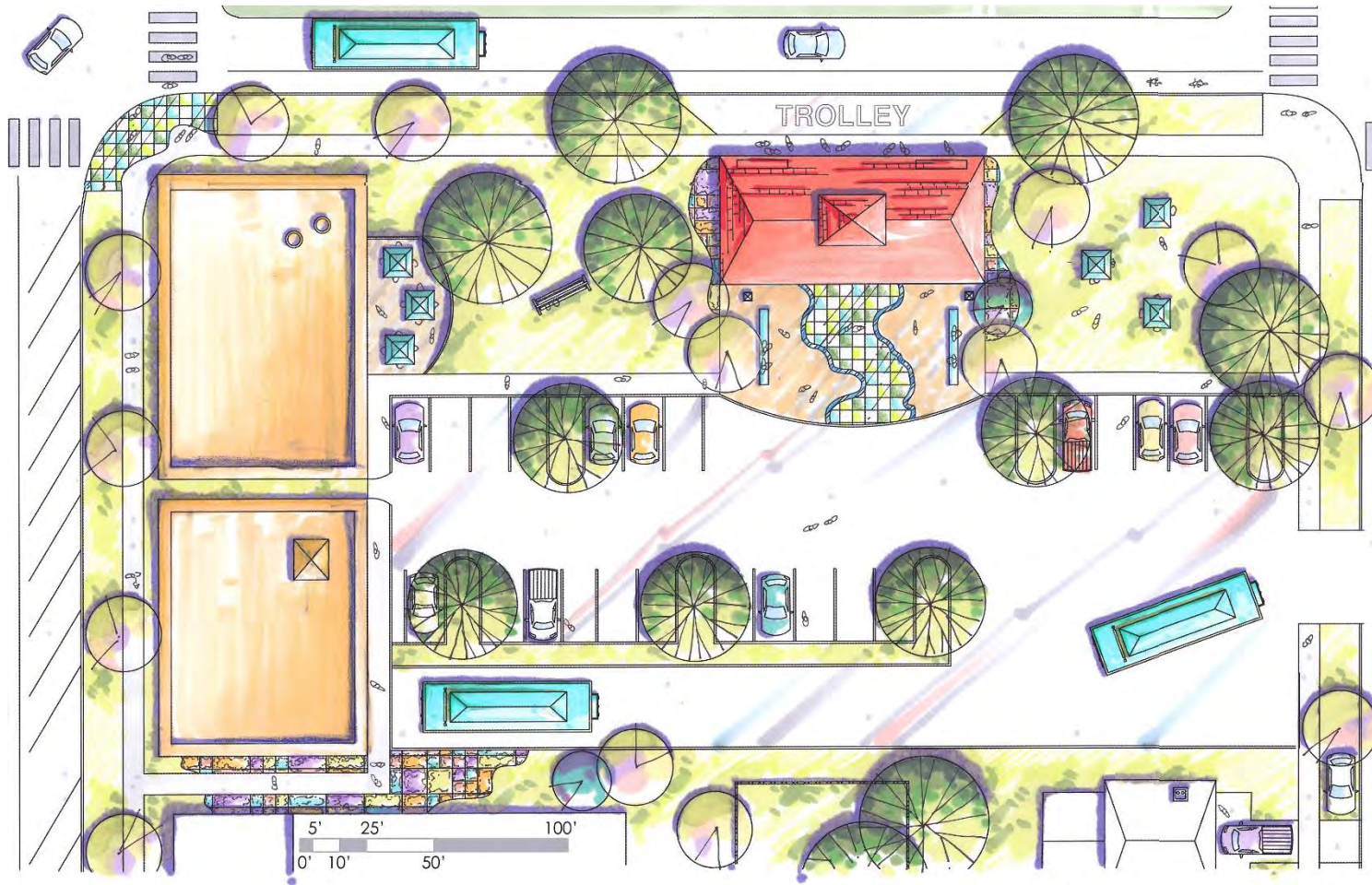


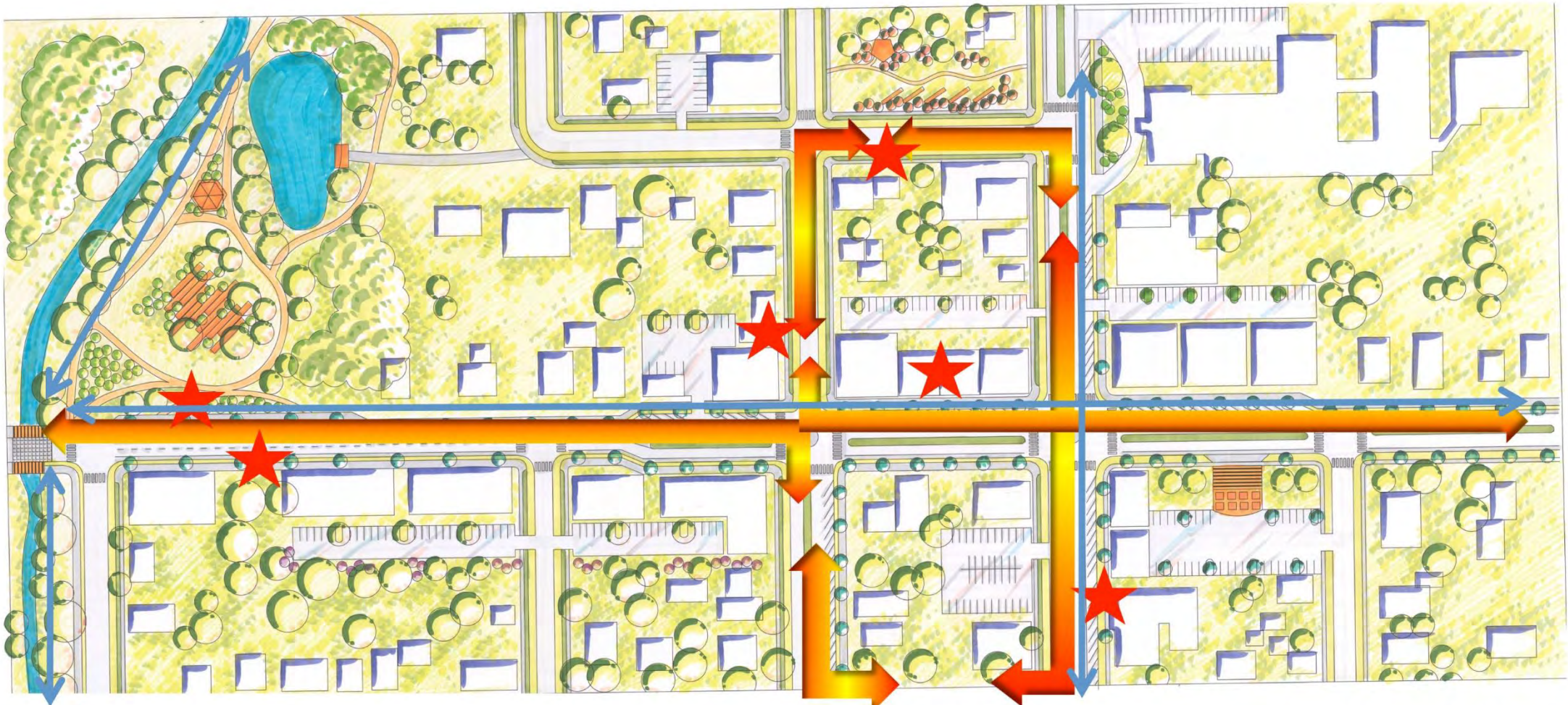


CONCEPT









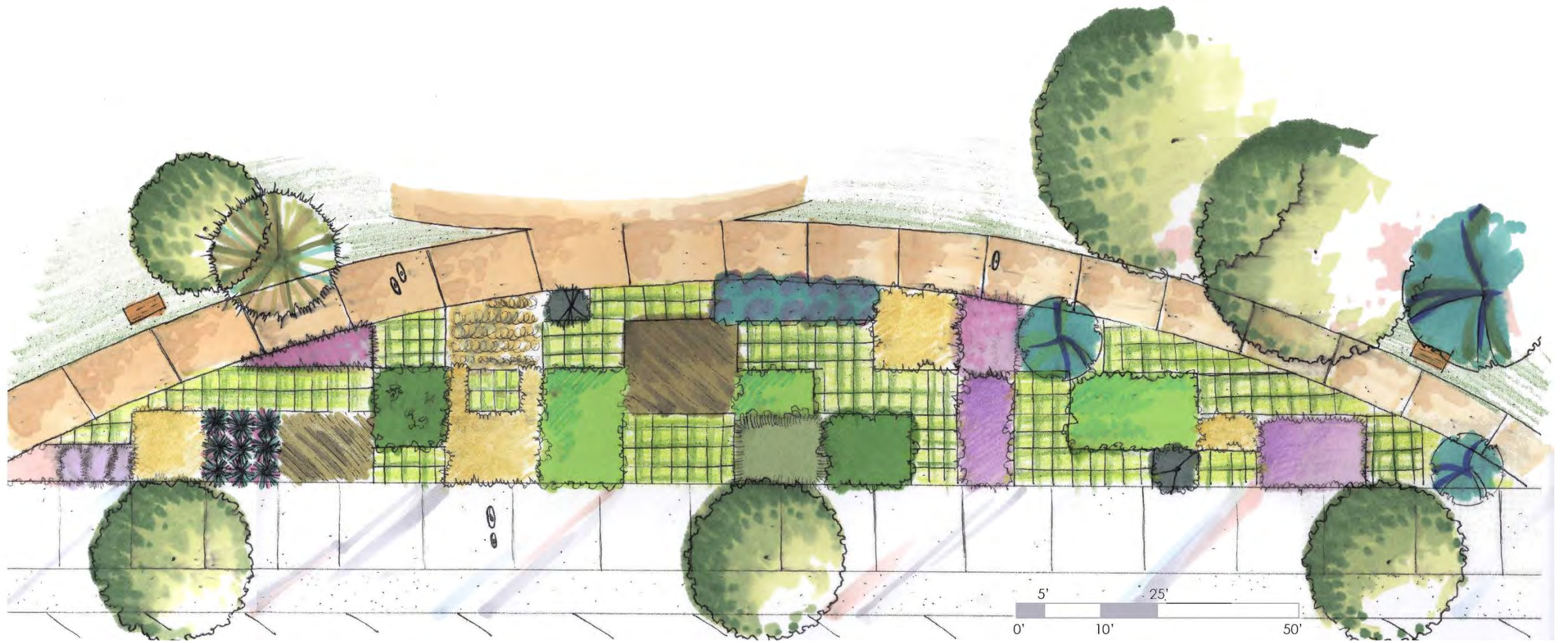
TROLLEY STOP

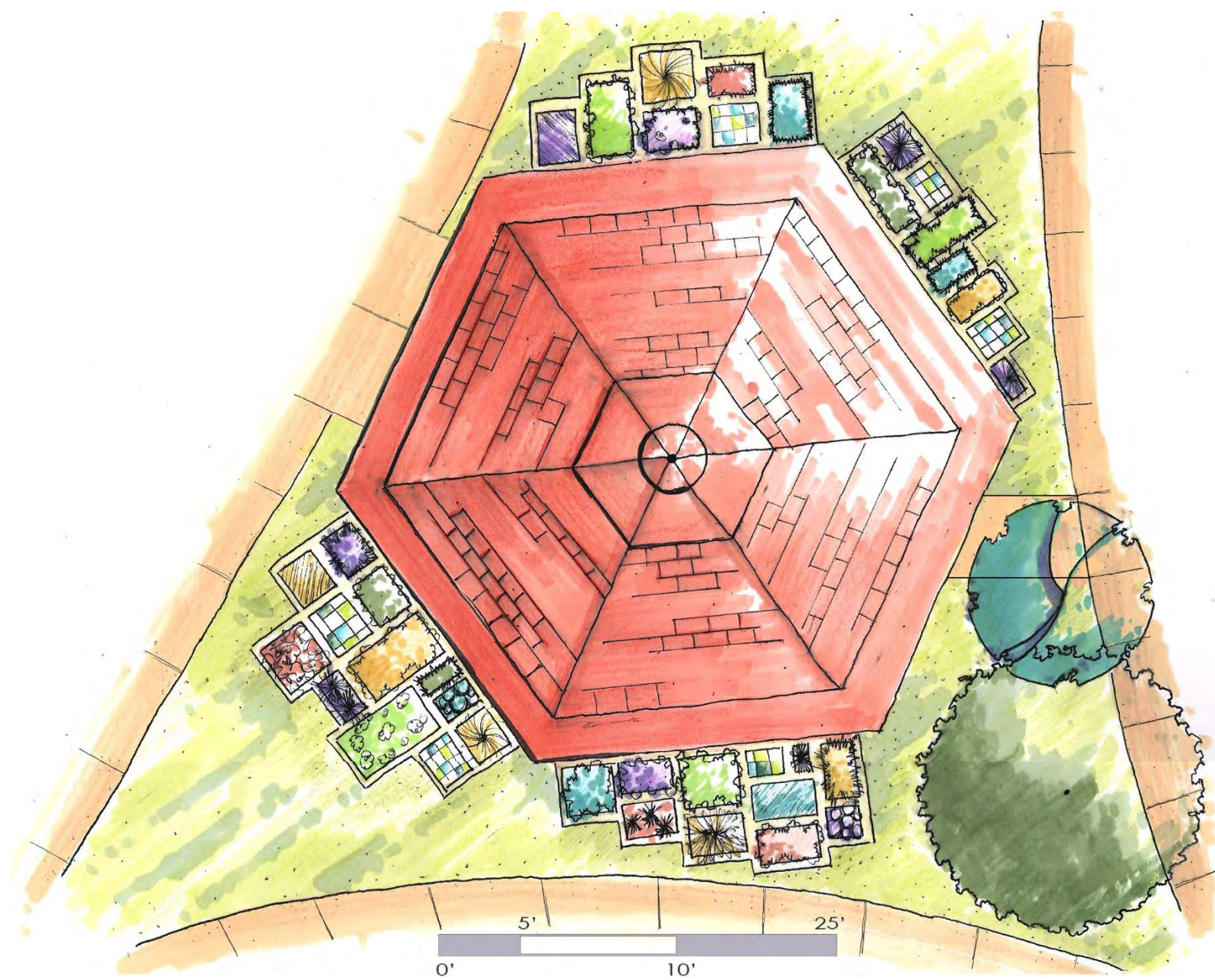


TROLLEY ROUTE

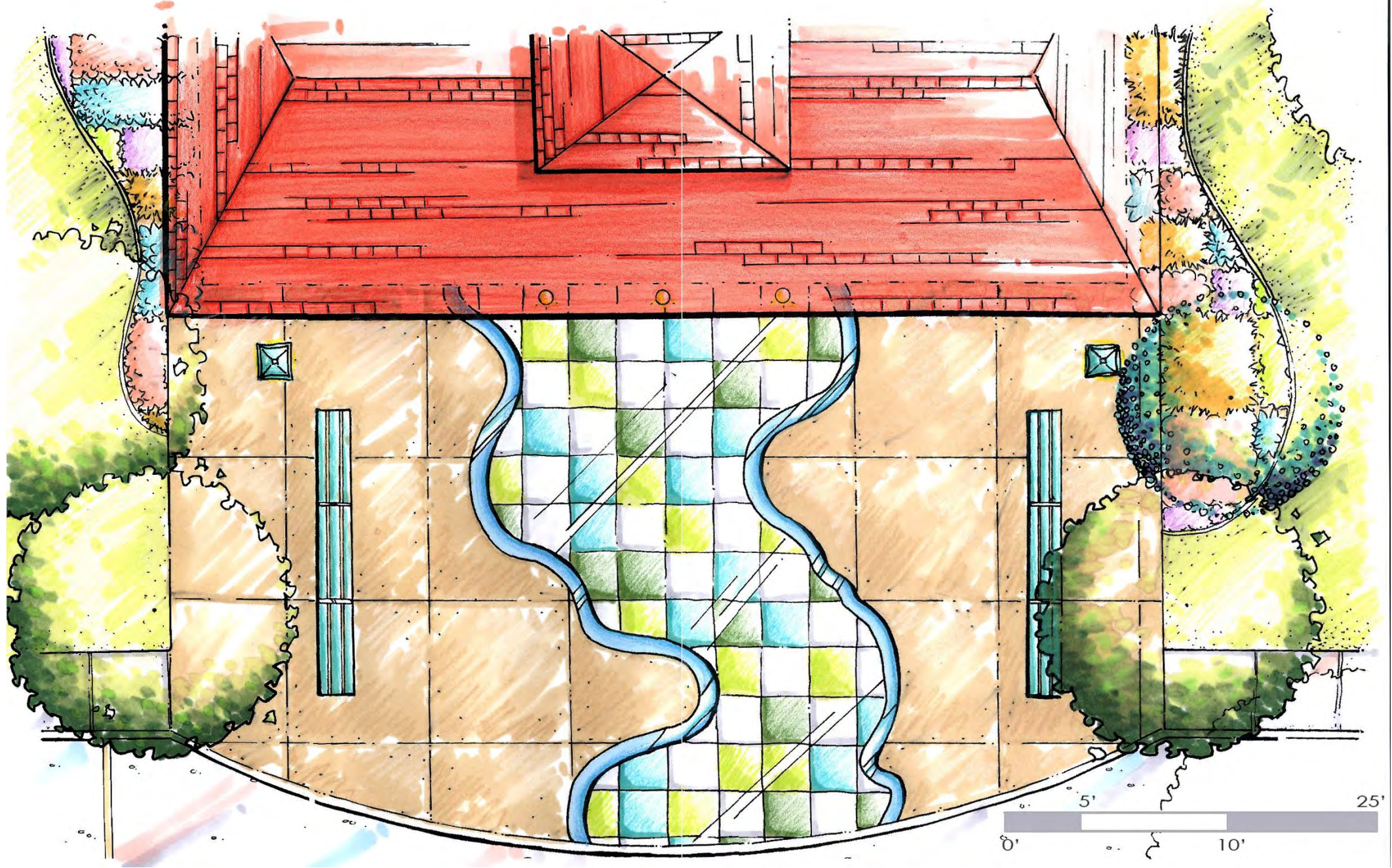


BIKE TRAIL











www.prairlemoon.com







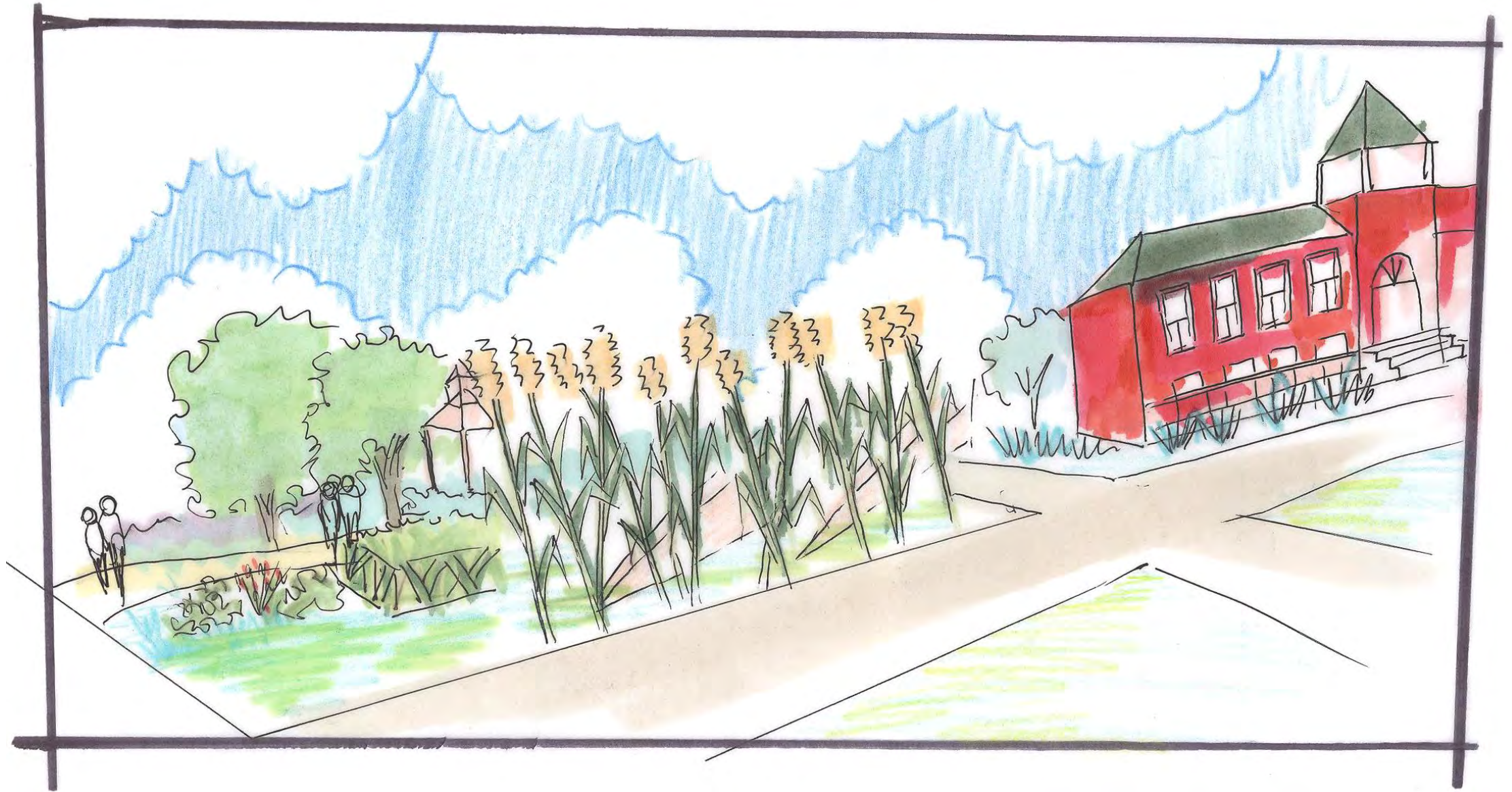




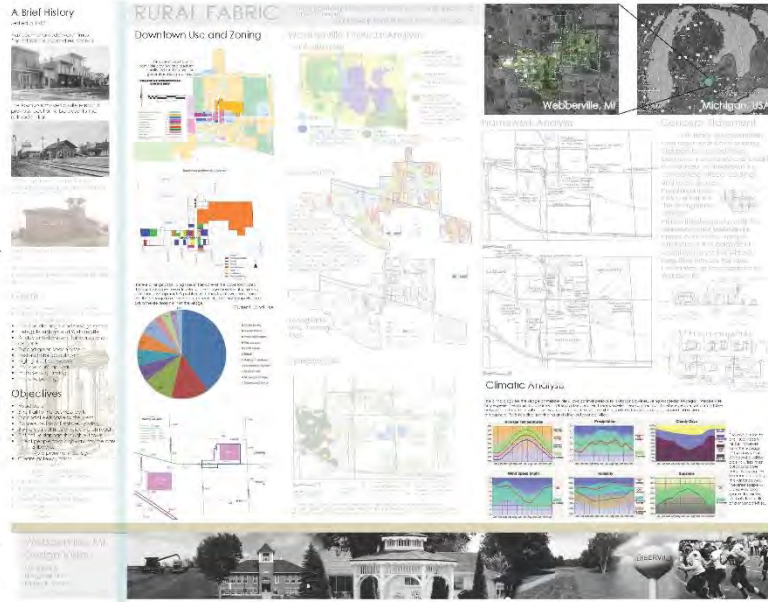


Image Source Page:

Katie Barry - Hongwei Tian - Moleah Beatty
Connections of Scale: LA 344

Board #1:

- Stoop Sketch: www.nipic.com/show/2/27/4604707k246e8cd3.html
- All images listed below were borrowed from: Alfaro, Harl, Haynes, Ramos. Michigan/Grand River Avenue Corridor Sub-Area Plan: Webberville. Tri-County Regional Planning. 2013.
- Webberville Zoning Map, Webberville Downtown Business Map, Current Land Use Chart and Traffic Volumes Map.
- Map of Michigan and Webberville, MI: courtesy of Google Earth
- Climate Charts: www.city-data.com/city/Webberville-Michigan.html
- Composite Image: (Left to Right)
 - Farm Work: travelingluck.com | North America | United States | Michigan
 - School: www.webbervilleschools.org/elementary-school/
 - Gazebo: villageofwebberville.com/
 - Golf course: www.michigangolf.com/courses/webberville/oak-lane/
 - Football Team: www.webbervilleschools.org/
 - Water tower: www.distancescalculator.com | Michigan | Webberville



Board #2 and #3:

- Composite Image: Referenced on board #1

Board #4:

- Ginkgo: www.winona.edu/publications/treebook/769.htm
- Japanese Zelkova: extension.illinois.edu/photolib/lib17//midsize/119a.jpg
- Red Maple: www.lowes.com/creative-ideas/gardening-and-outdoor/reflections/the-truth-about-trees/article
- Norway Maple: www.yourgardenshow.com/plants/6624-Acer-platanoides-Emerald-Queen-
- All images listed below were borrowed from: www.missouribotanicalgarden.org/
- Wild Columbine, Blazing Star, Black-Eyed Susan, Great Blue Lobelia, Bluejacket, Purple Coneflower, White Wild Indigo, New England Aster and Rose Milkweed
- Composite Image: Referenced on board #1



Thank You!
