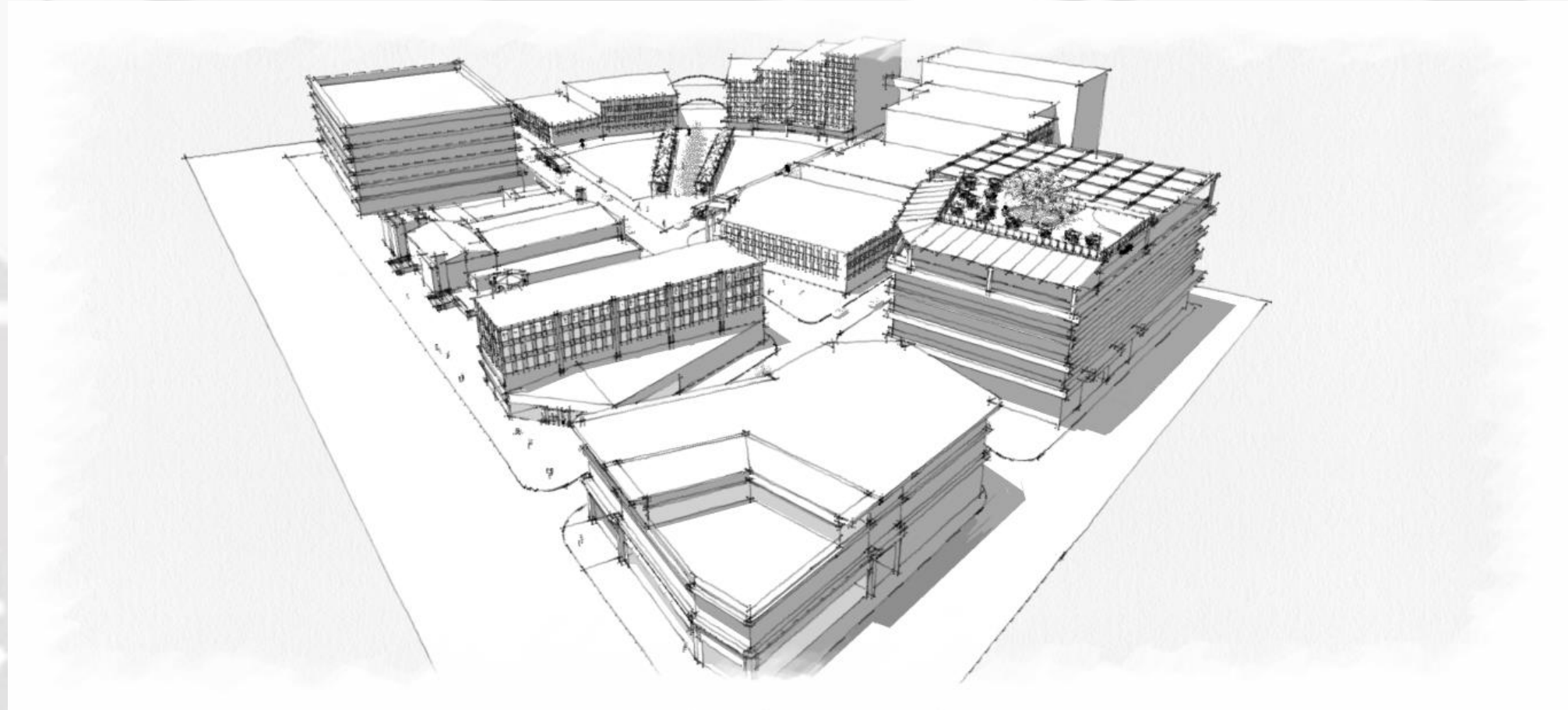


PARK PLANNING DISTRICT DEVELOPMENT

art as connection



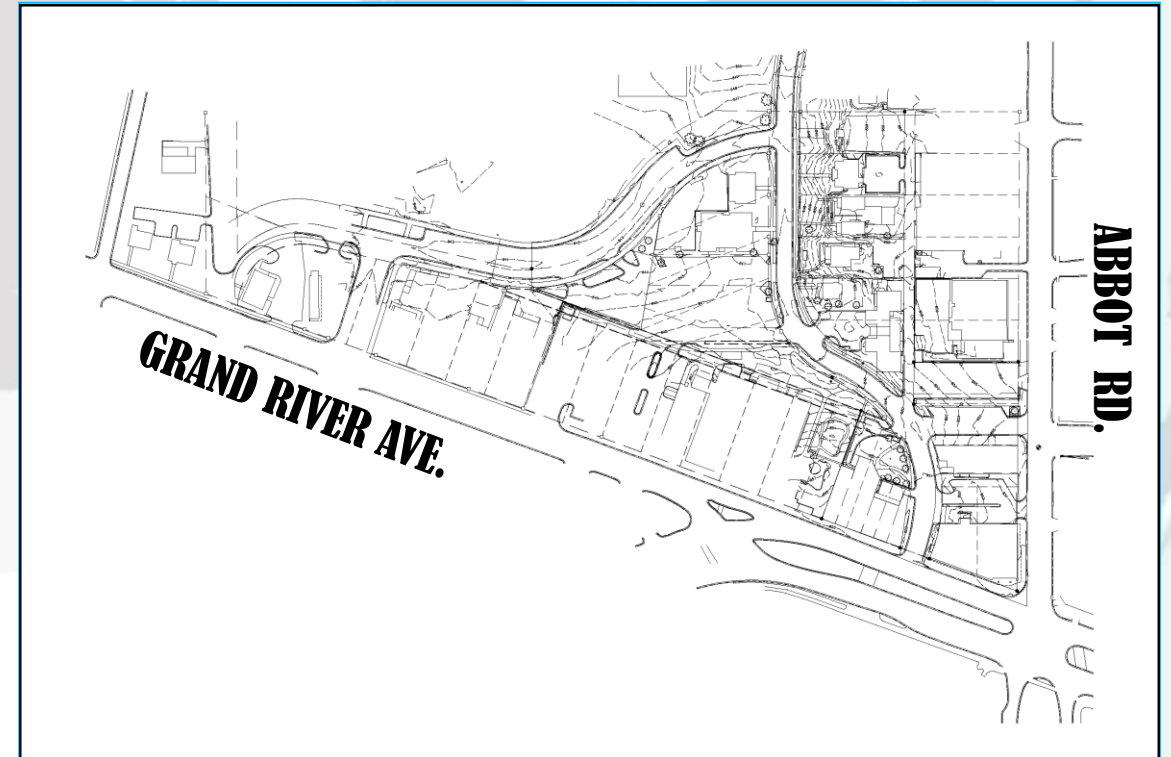
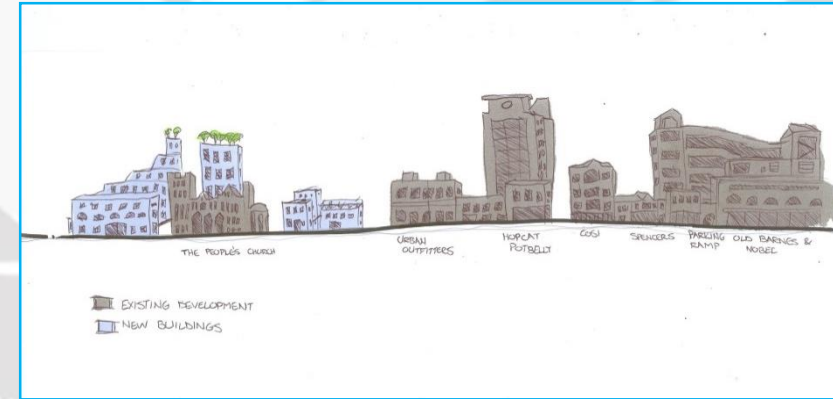
Katie Ling. Gooney Hong. Bridget Safferman. C.J. Thompson. Michigan State University

EXISTING SITE and OBJECTIVES

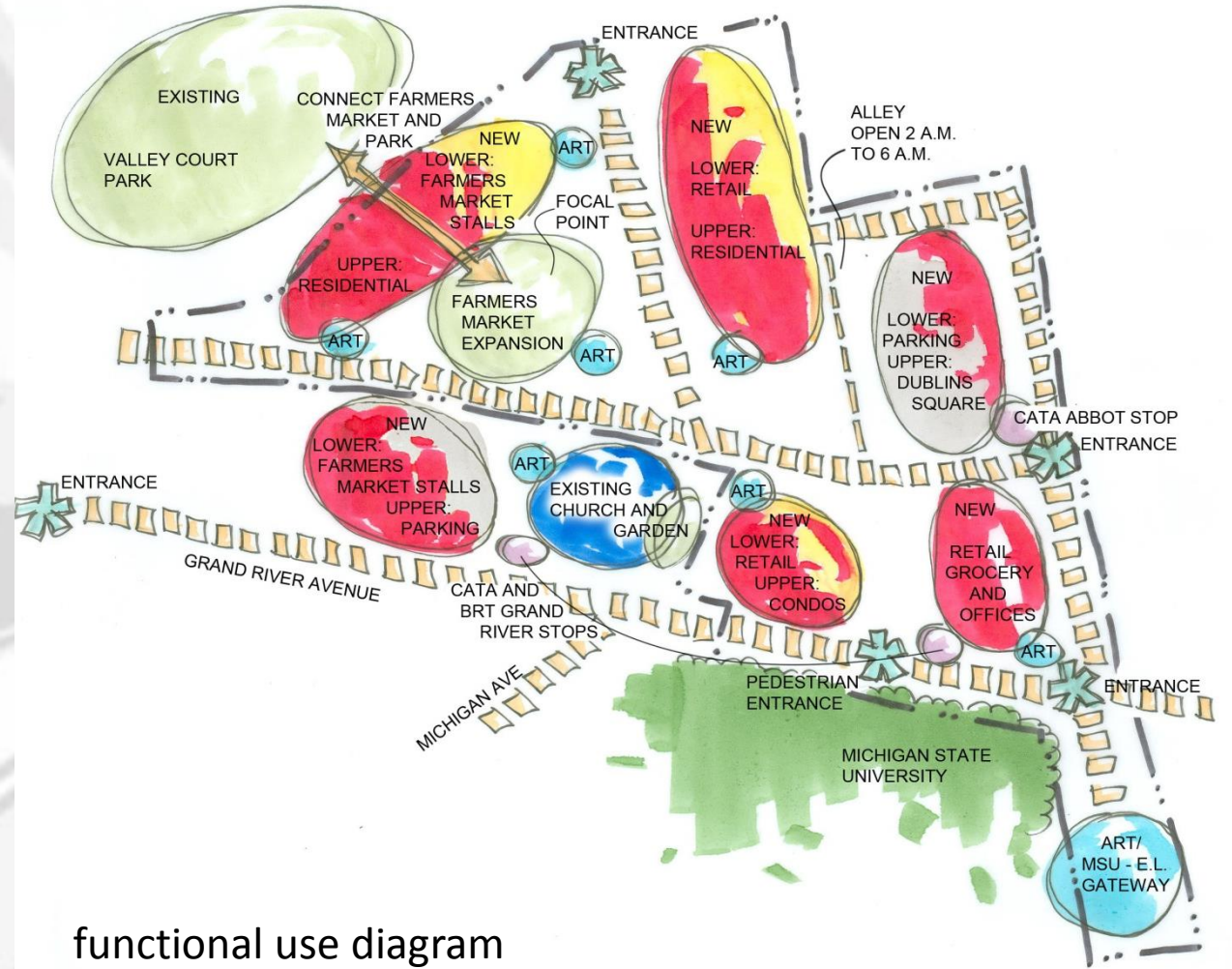
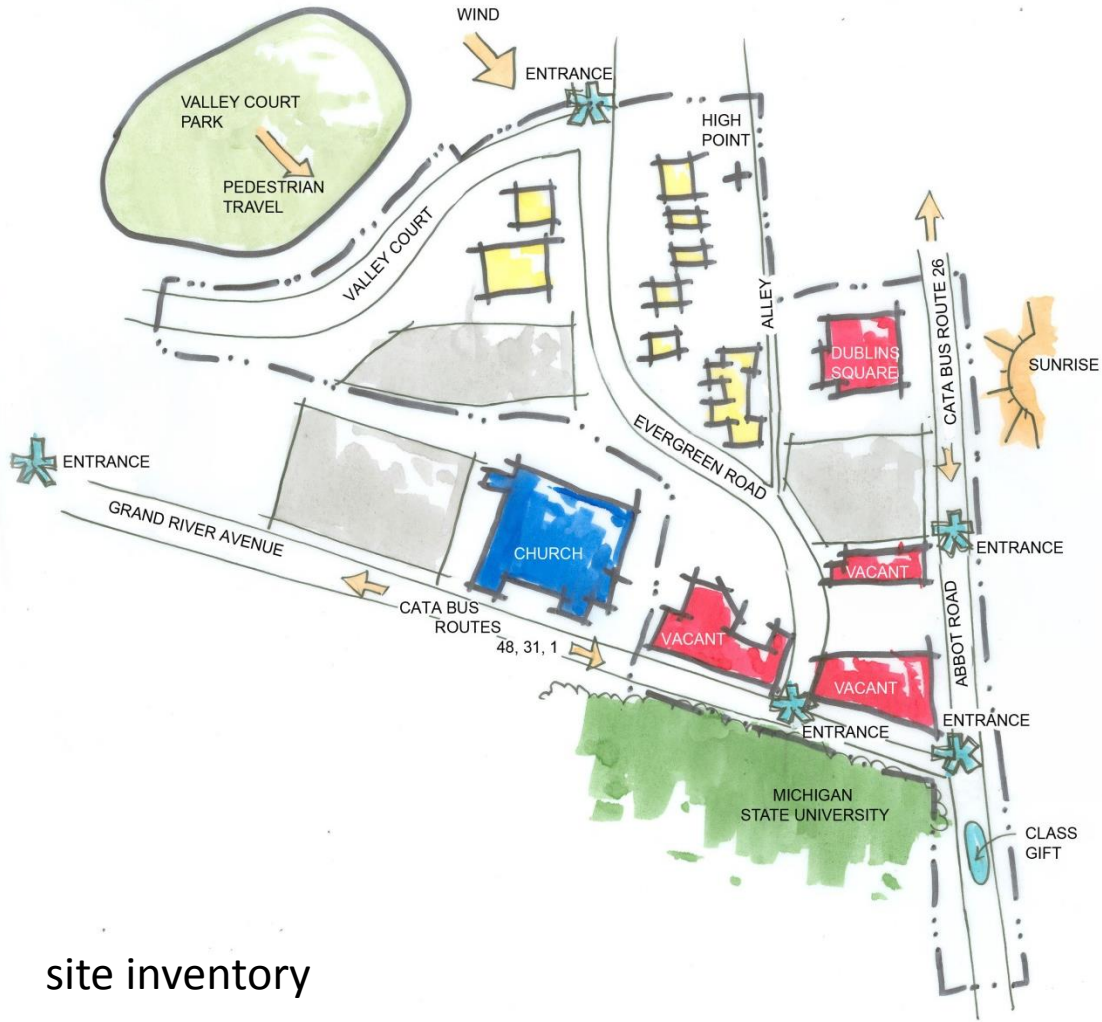


GOALS AND OBJECTIVES

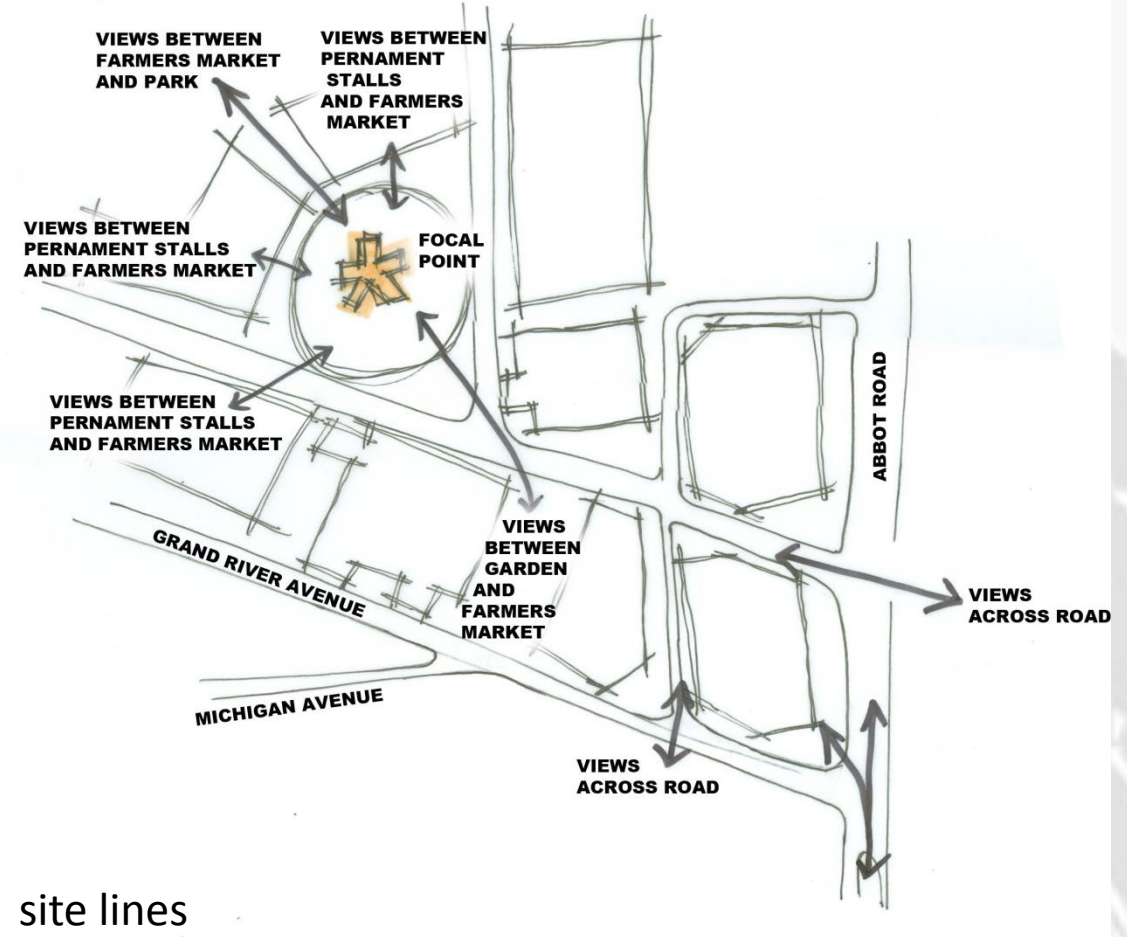
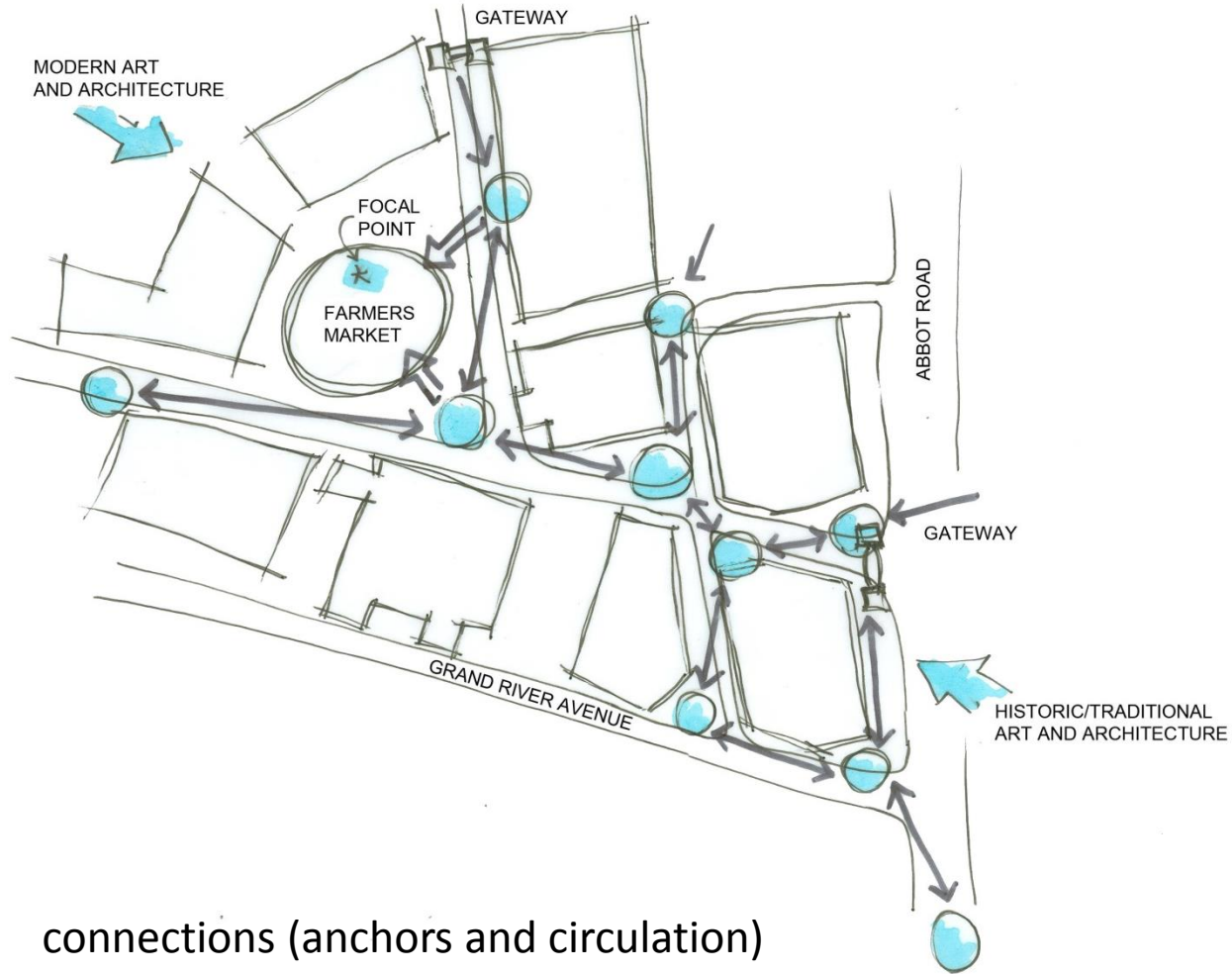
- Increase the density of East Lansing building development by specifying mixed use as well as particular uses specific to zoning regulations
- Provide safe bicycle and pedestrian connections to existing routes, particularly North and South across Grand River Avenue
- Encourage the use of public transit by providing safe and comfortable stops for the CATA bus system and the proposed Bus Rapid Transit (BRT) Line
- Increase the cultural draw of East Lansing by implementing a street arts and music program
- Encourage visitation to East Lansing by creating a more all-encompassing destination place
- Expand and integrate farmers markets into the city with a permanent, year-round structure and four-season use
- Create new corporate/office, retail, and residential spaces for students and year-round community members
- Integrate Valley Court Park into the fabric of urban East Lansing
- Forge a partnership with MSU's Broad Art Museum and Public Art Tour to increase appreciation of the arts and bring the two communities together.



SITE INVENTORY and FUNCTIONAL USE DIAGRAM



CONNECTIONS and SITE LINES



BASEPLAN



lower retail/ upper apartments and office space

farmer's market

open arcade

lower parking garage and Dublin Square/
upper fine dining restaurant

church parking garage

existing church and garden

lower grocery/ upper restaurant and living area

upscale alumni housing/ apartments

improved campus entrance

lower level retail/ upper level apartments

church parking garage

Lower level retail/ upper level offices

farmer's market

upper level restaurant

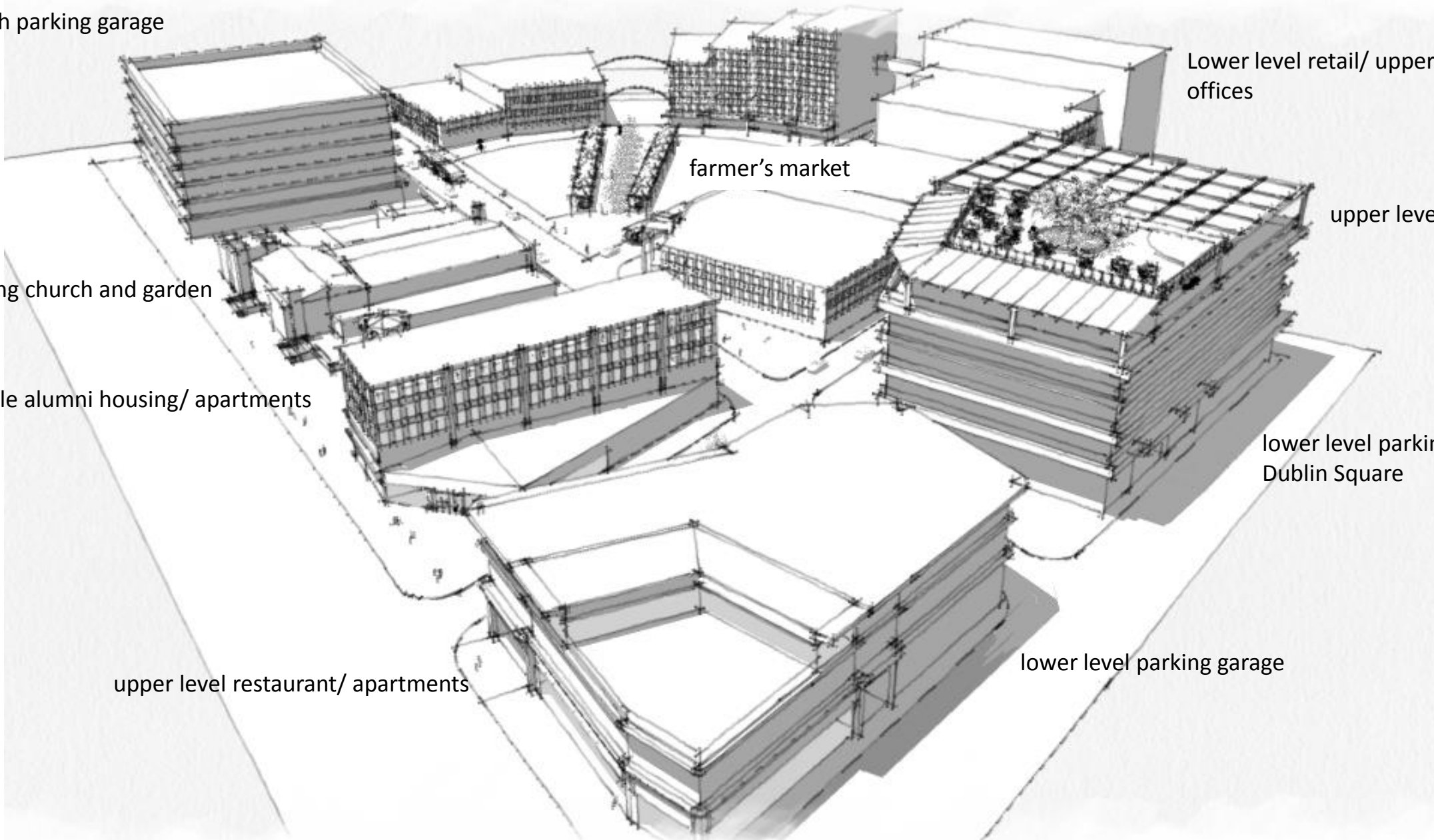
existing church and garden

upscale alumni housing/ apartments

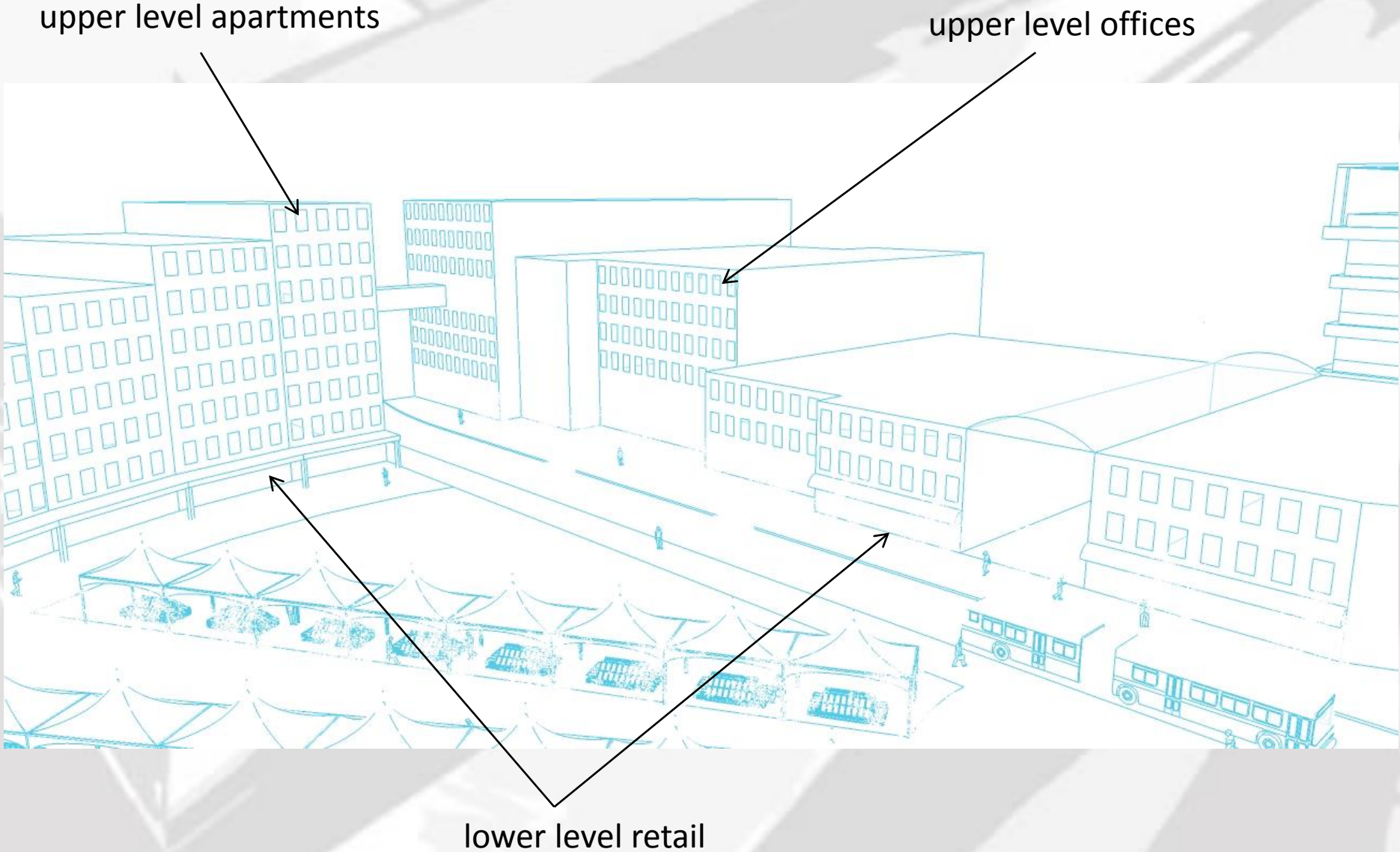
lower level parking garage/
Dublin Square

upper level restaurant/ apartments

lower level parking garage



LOWER RETAIL/ UPPER OFFICE AND APARTMENT



These building serve great in this urban area because of there multiple use. The lower level consists of restaurants and retail stores. And the upper levels are offices and apartments. This style is already seen a lot in East Lansing so it should fit into the area very well.



DUBLIN SQUARE/ PARKING GARAGE

DUBLIN SQUARE

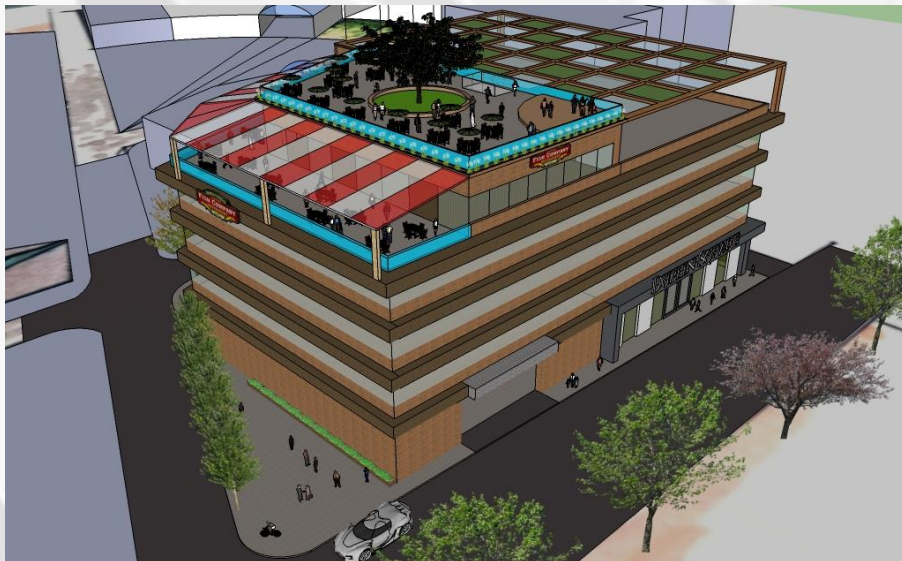


Dublin Square exists where it is before to embrace the historical context. Dublin Square is one of the hot spot in EL → did not want to change the location.
The structure is total 5 floors.
First floor → Dublin Square with parking space reserved for Dublin users.

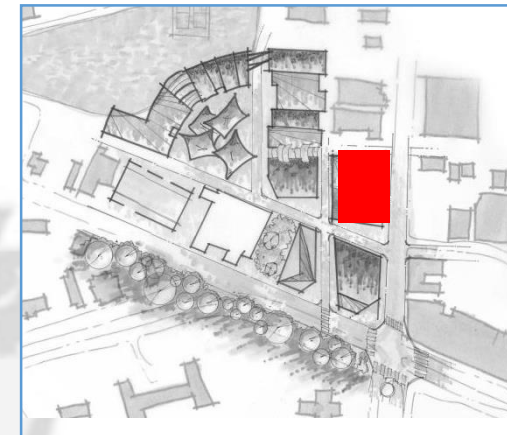


DUBLIN SQUARE/ PARKING GARAGE

PARKING GARAGE

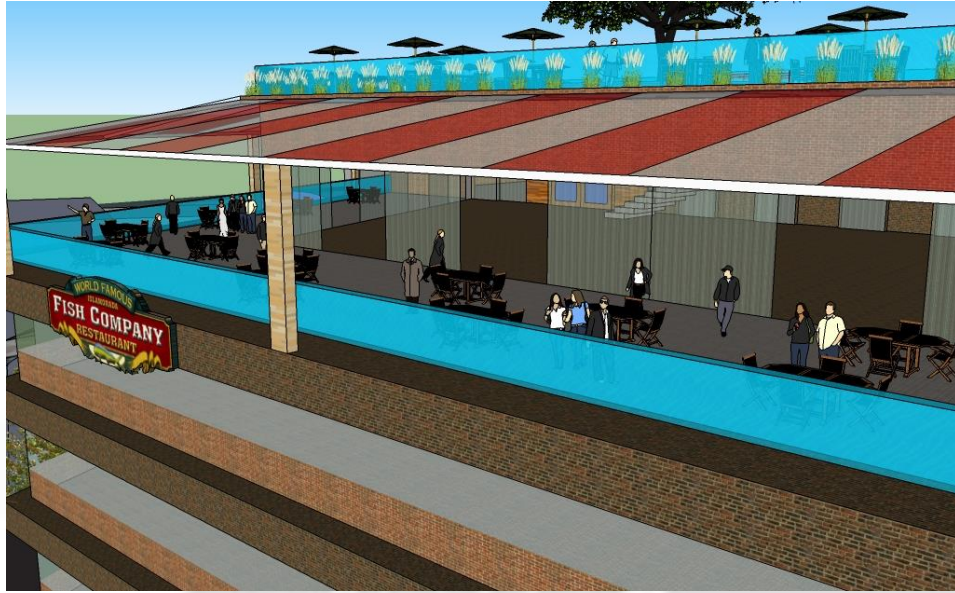


Parking Lot,
Second floor to 4th floor → public parking spaces.
5th floor → luxury family restaurant with
outdoor deck & outdoor rooftop dining/ leisure/
mini music concert area. Outdoor parking lot
with checked-pattern green roof mixed with glass
structure. (Parking reserved for the restaurant.)

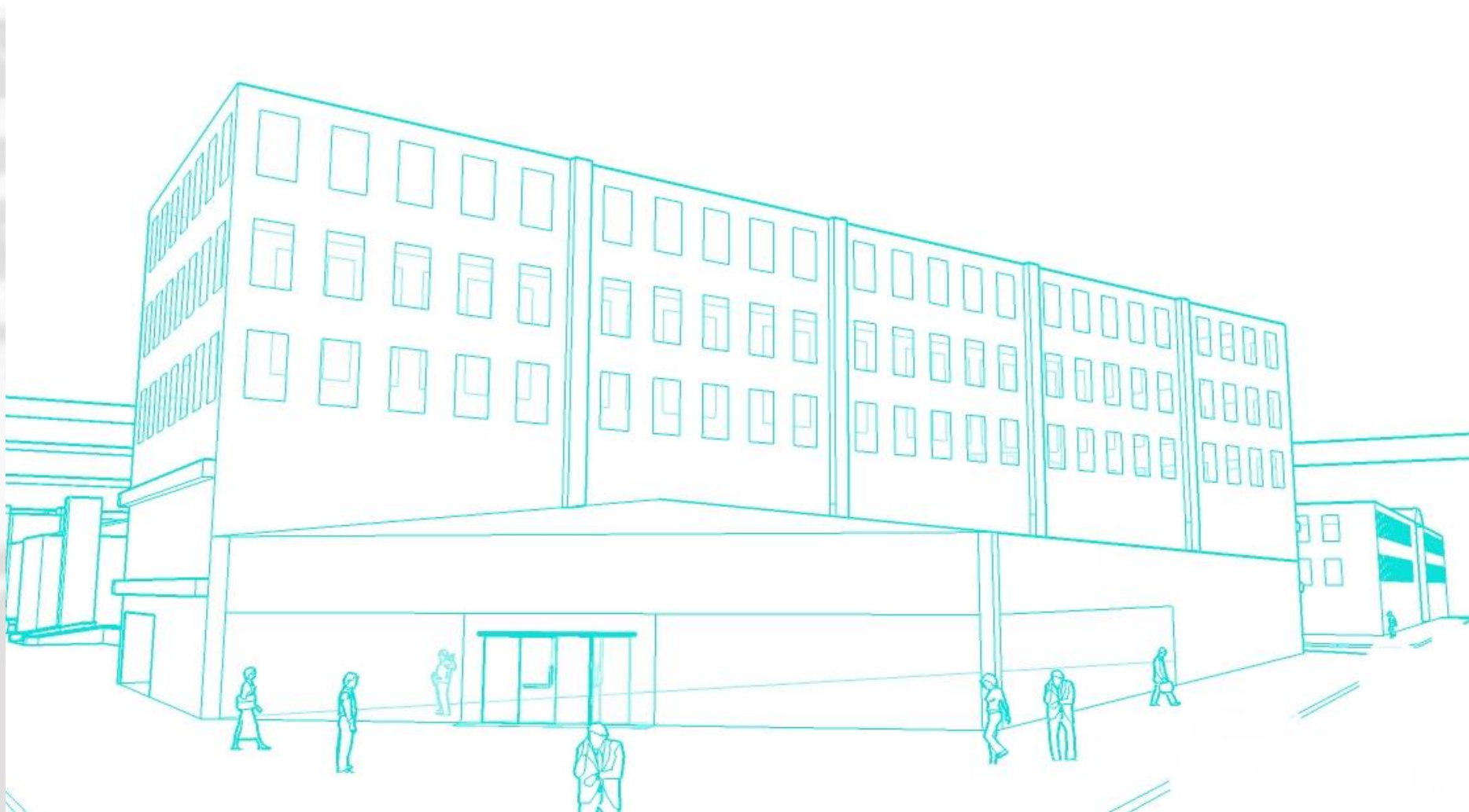


DUBLIN SQUARE/ PARKING GARAGE

ROOF-TOP RESTAURANT



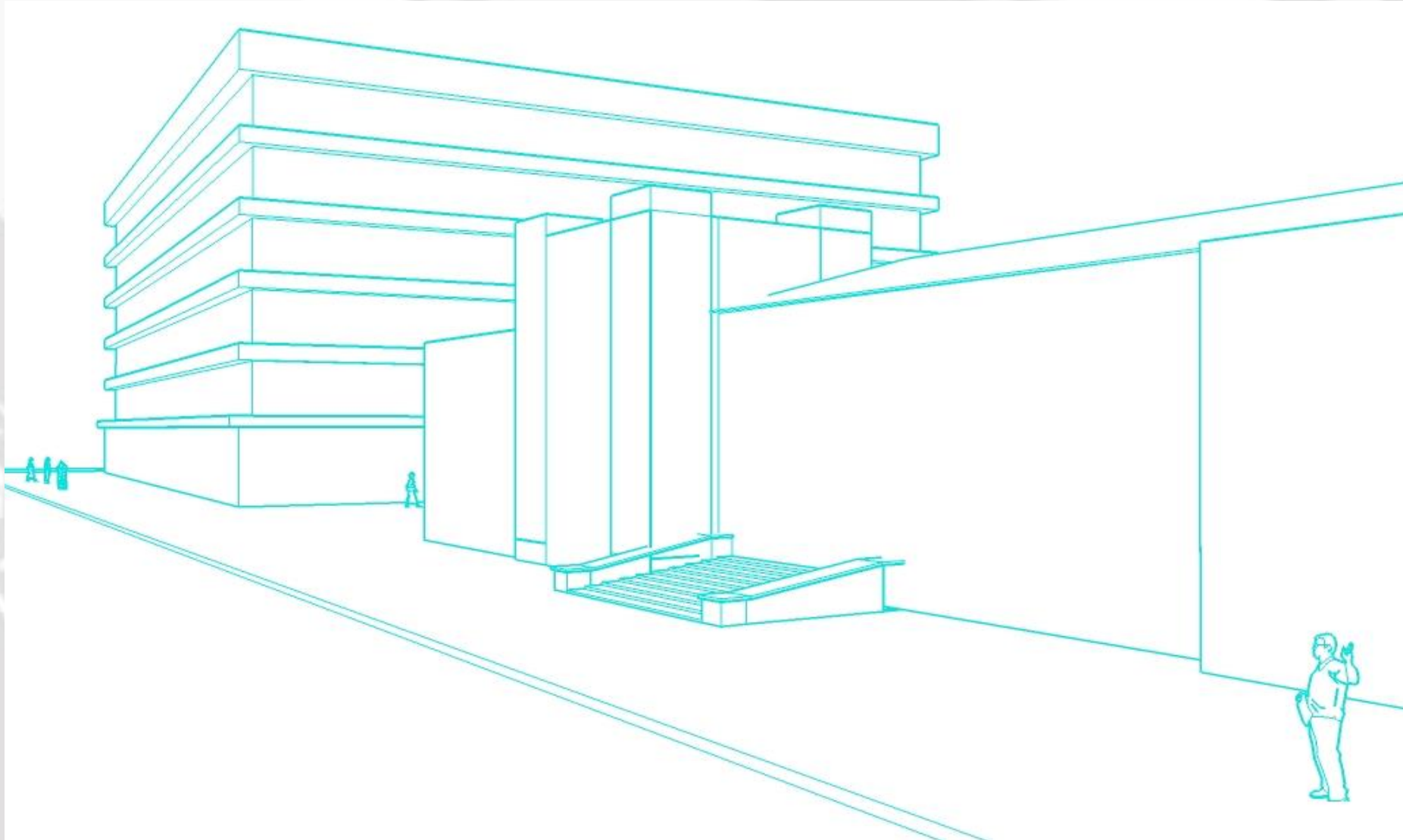
UPSCALE ALUMNI HOUSING/ APARTMENTS



The whole concept of this structure and its placement is to try and bring back alumni into the East Lansing community. It is a very nice, modern building that will attract many tenants. These customers will also help put money back into neighboring businesses which will help the community as a whole.



CHURCH PARKING STRUCTURE

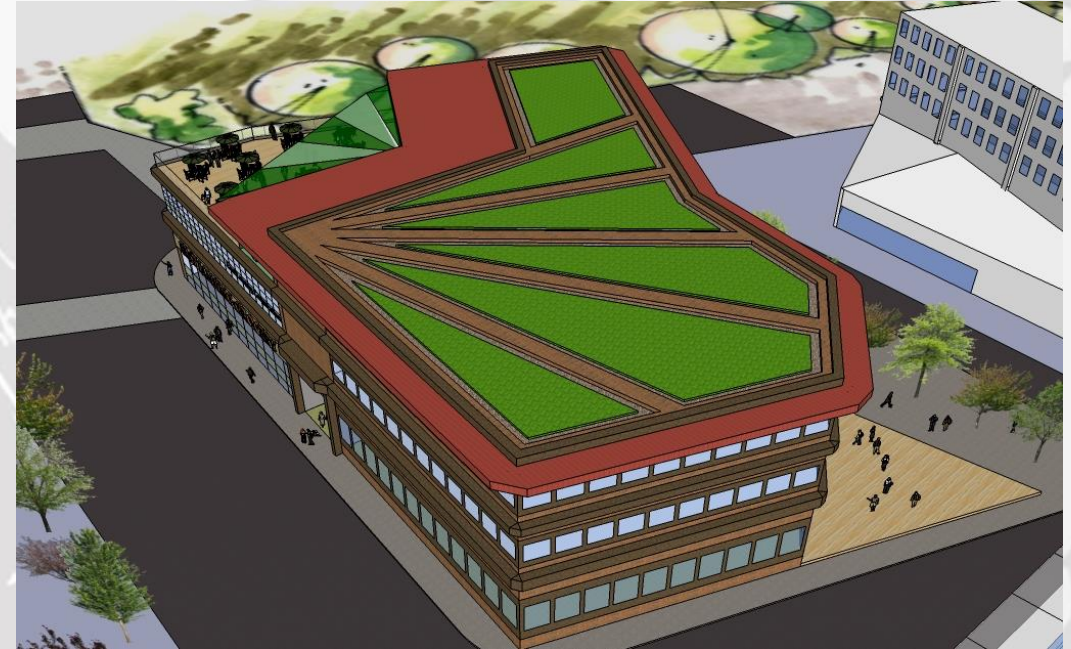


Attaching a parking structure to the side of the church will serve many purposes for this community. The church will have reserved spots for patrons and the rest of the structure will be for people coming onto the site.



GROCERY/ RESTAURANT

GROCERY STORE



First building from P.O.B
One of the lowest structures of all the other new design buildings.
The structure is total 3 floors.
First floor consists of East Lansing public grocery store and parking areas.
Second floor consists of office/commercial use stores and alumni/graduate residence apartment.

GROCERY/ RESTAURANT

ROOF - TOP RESTAURANT



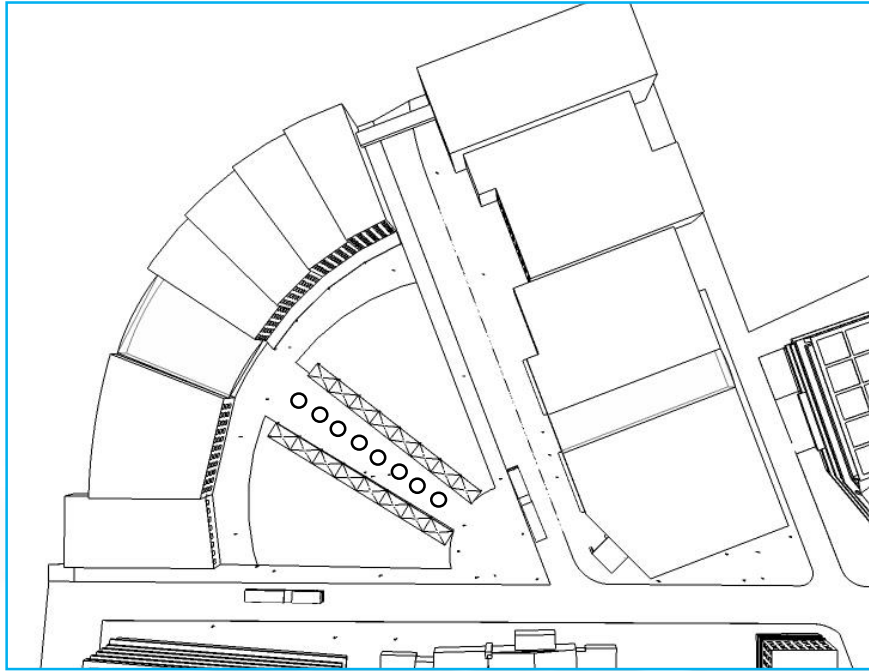
Third floor consists of coffee shop (Could be used for other commercial use.), an open space, and alumni/graduate residence apartment.

The rooftop from the third floor is green roof, having a distinct fan-shape pattern to emphasize the opening of our design → Art as Connection.

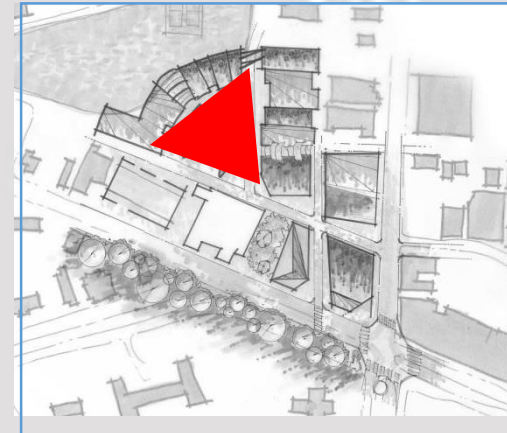
The green roof serves part as a rain garden that collects water for other use. (Multi-purpose rooftop design.) Green roof is aesthetically pleasing from the view from deck and open roof top in luxury family restaurant.



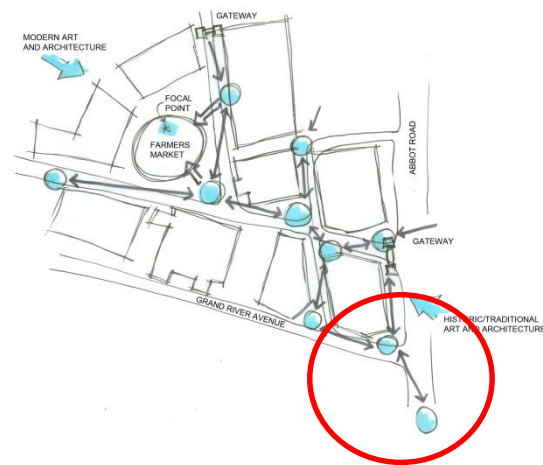
FARMER'S MARKET

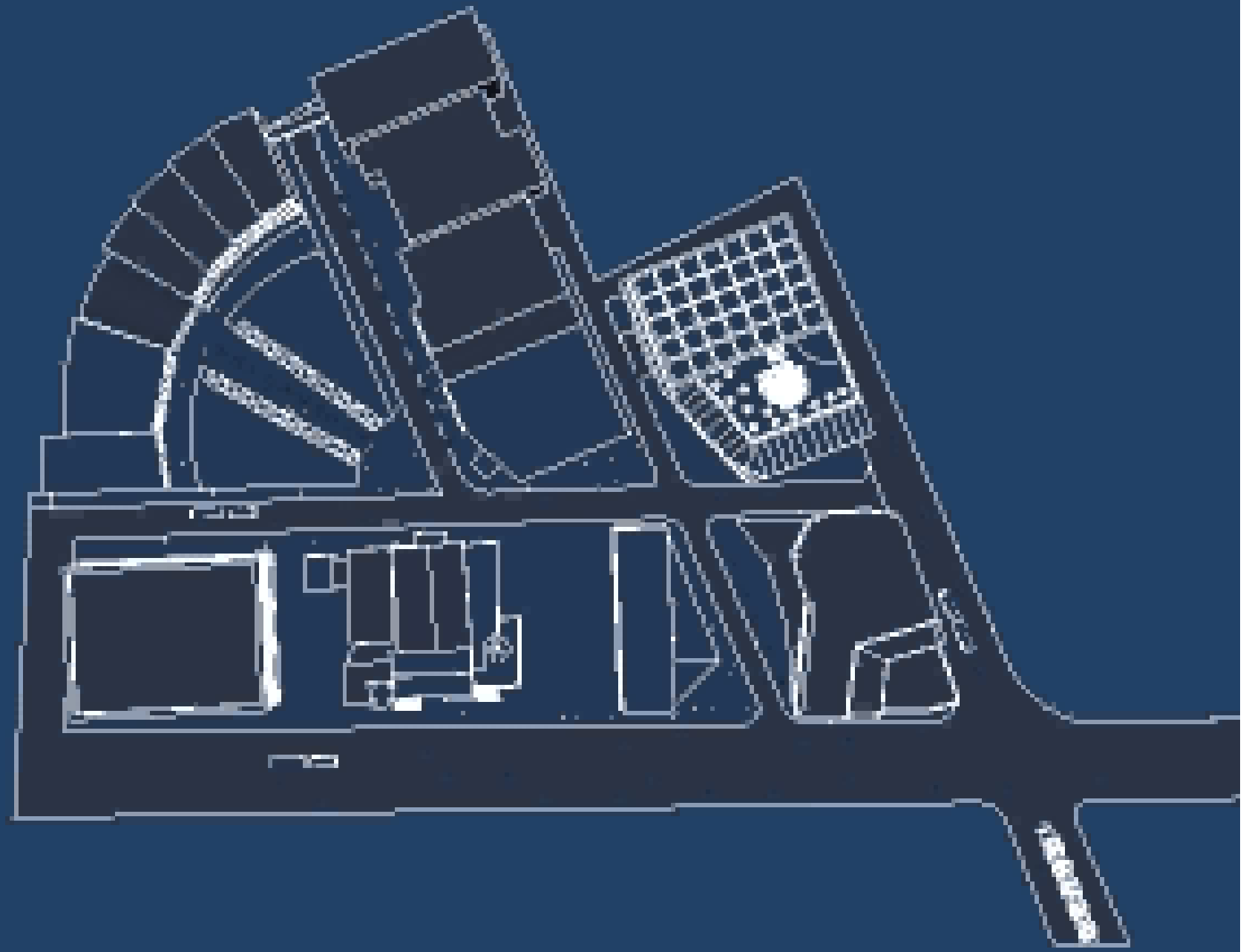


The concept that we went with for our farmer's market was to have a big open area with plenty of room for activity. We located it on a major intersection in our space to draw attention. It is enclosed by that roadway and the skyline behind it. An archway is placed splitting the buildings and connected this space to the park behind it.



CAMPUS ENTRANCE





PLANTING PLAN



Botanical (Latin) Name	Common Name	Vegetation Type	Seasonal Interest	Functions
<i>Hamamelis x Diane</i>	Witch Hazel	Ornamental Deciduous Tree	Winter/Spring Bloom	All-Seasons Interest
<i>Cercis canadensis</i>	Eastern Redbud	Small Deciduous Tree	Spring Bloom	Bright Color Display
<i>Viburnum plicatum tomentosum</i>	Doublefile Viburnum	Large Flowering Semi-Evergreen Shrub	Spring Bloom	All-Seasons Interest
<i>Miscanthus sinensis</i>	Chinese Silver Grass/Maidengrass	Ornamental Grass	Spring Bloom	Ornamental Grass
<i>Syringa reticulata</i>	Peking/Japanese Tree Lilac	Flowering Deciduous Tree	Spring Bloom	Summer Shade
<i>Asclepias tuberosa</i>	Butterfly Weed, Butterfly Milkweed	Small Flowering Deciduous Perennial	Late Spring Bloom	Attracts Butterflies, Color Display
<i>Magnolia x soulangeana</i>	Saucer Magnolia	Ornamental Flowering Deciduous Tree	Spring Bloom/Summer Display	Bright Color Display
<i>Liriodendron tulipifera</i>	Tulip Tree	Large Deciduous Flowering Tree	Spring/Summer Bloom	Summer Shade
<i>Papaver orientale</i>	Oriental Poppies	Small Herbaceous Perennial	Late Spring/Early Summer Bloom	Bright Color Display
<i>Liquidambar styraciflua</i>	American Sweetgum	Medium Deciduous Tree	Summer	Street/Shade Tree
<i>Gleditsia triacanthos inermis</i>	Honey Locust	Large Deciduous Tree	Late Summer Leaf-In	Street/Shade Tree
<i>Hosta spp.</i>	Multi-Species Hosta, Plantain Lily	Small Flowering Perennial	Spring, Summer, Fall Foliage	Attracts Hummingbirds, Color Display
<i>Festuca glauca 'Elijah Blue'</i>	Elijah Blue Fescue	Small ornamental Grass	Spring/Summer Foliage	Colorful Foliage
<i>Cephalanthus occidentalis</i>	Buttonbush	Medium Deciduous Flowering Shrub	Summer Bloom, Fall Color	Attracts Butterflies, Color Display
<i>Cotinus coggygria</i>	Smokebush	Large Flowering Deciduous Shrub	Summer Bloom, Fall Color	All-Seasons Interest
<i>Viburnum acerifolium</i>	Maple-Leaf Viburnum	Large Flowering Semi-Evergreen Shrub	Summer Bloom, Fall Color	All-Seasons Interest
<i>Hydrangea quercifolia</i>	Oakleaf Hydrangea	Large Flowering Deciduous Shrub	Summer Bloom, Winter Bark Interest	All-Seasons Interest
<i>Mehonia aquifolium</i>	Oregon Grapeholly	Large Flowering Evergreen Shrub	Summer/Fall Color, Winter Color	All-Seasons Interest
<i>Ginkgo biloba</i>	Ginkgo/Maidenhair Tree	Large Deciduous Tree	Fall Color	Street/Shade Tree
<i>Acer rubrum</i>	Red Maple	Large Deciduous Tree	Fall Color	Street/Shade Tree
<i>Quercus macrocarpa</i>	Bur Oak	Large Deciduous Tree	Fall Color	Summer Shade
<i>Buxus 'Green Gem'</i>	Green Gem Boxwood	Medium Evergreen Shrub	Spring/Summer Leaf-In, Fall Interest	All-Seasons Interest
<i>Fagus grandifolia</i>	American Beech	Large Deciduous Tree	Fall Color, Winter Bark Interest	Summer Shade
<i>Acer glabrum</i>	Paperbark Maple	Medium Deciduous Tree	Fall Color, Winter Bark Interest	Summer Shade
<i>Betula nigra</i>	River Birch	Medium Deciduous Tree	Fall Color, Winter Bark Interest	All-Seasons Interest
<i>Fagus occidentalis</i>	American Plane Tree	Large Deciduous Tree	Winter Texture, Fragrant	Summer Shade
<i>Cornus sericea var. baileyi</i>	Red Osier Dogwood	Large Deciduous Shrub	Winter Color	All-Seasons Interest
<i>Cornus sanguinea 'Midwinter Fire'</i>	Common Dogwood 'Midwinter Fire'	Large Deciduous Shrub	Winter Color	All-Seasons Interest
<i>Corylopsis spicata</i>	Spike Winter Hazel	Small Deciduous Tree	Winter Texture	All-Seasons Interest

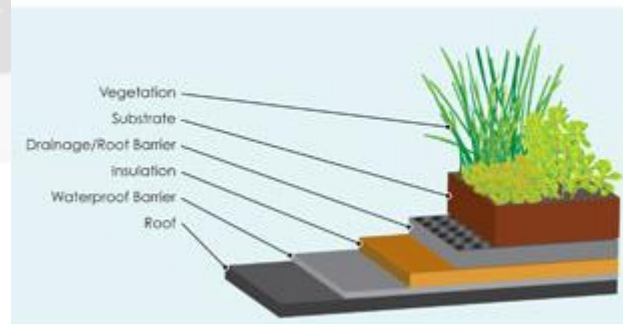
GREEN ROOFS



Green roof design is becoming more relevant today because of its sustainability features. Our site is a site for the future and green roofs are the future of urban development which is going to make this a very unique and rewarding space for our university as well as the community.



➤ Green Roof Diagram



SITE FURNITURE



SUSTAINABLE PRACTICES



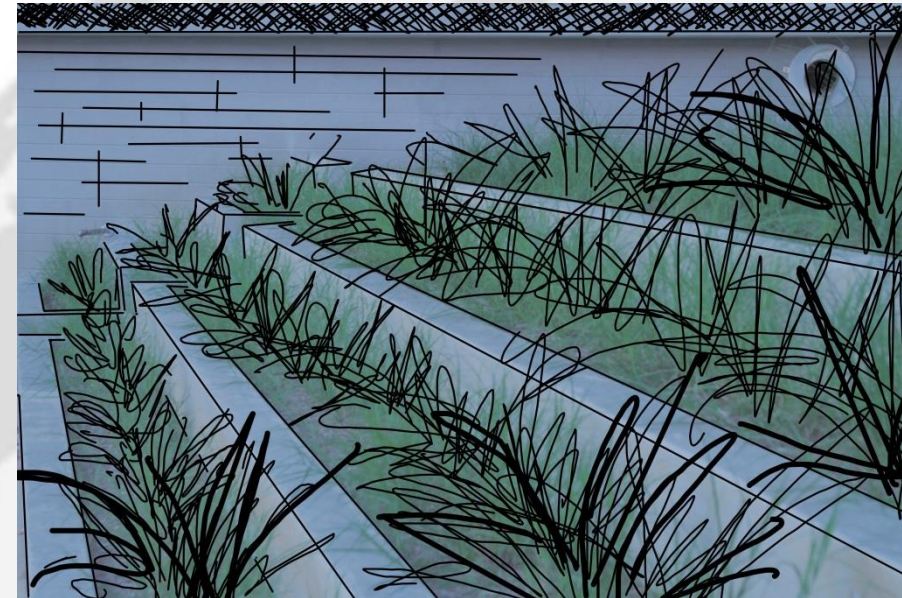
RAIN GARDEN

Rain gardens should be a major part of this site because there will be a lot of water running off of the impervious services and this feature will collect this runoff and filtrate it back into the ground. This will help keep water off of the streets and sidewalks.



STORMWATER CONTAINMENT SYSTEM

Below is an example of a storm water containment system that is going to be placed at the top of the alumni housing project. Its purpose is to collect runoff that hits the top of the building. It is just an example of how we want this site to be as sustainable and as “Green” as possible.





THANK YOU!

WE APPRECIATE YOUR TIME!