

# **PARK DISTRICT EAST LANSING.**

ART AS A CONNECTION

MAUDIE SMITH. WES JONES. ELLE DANIELS

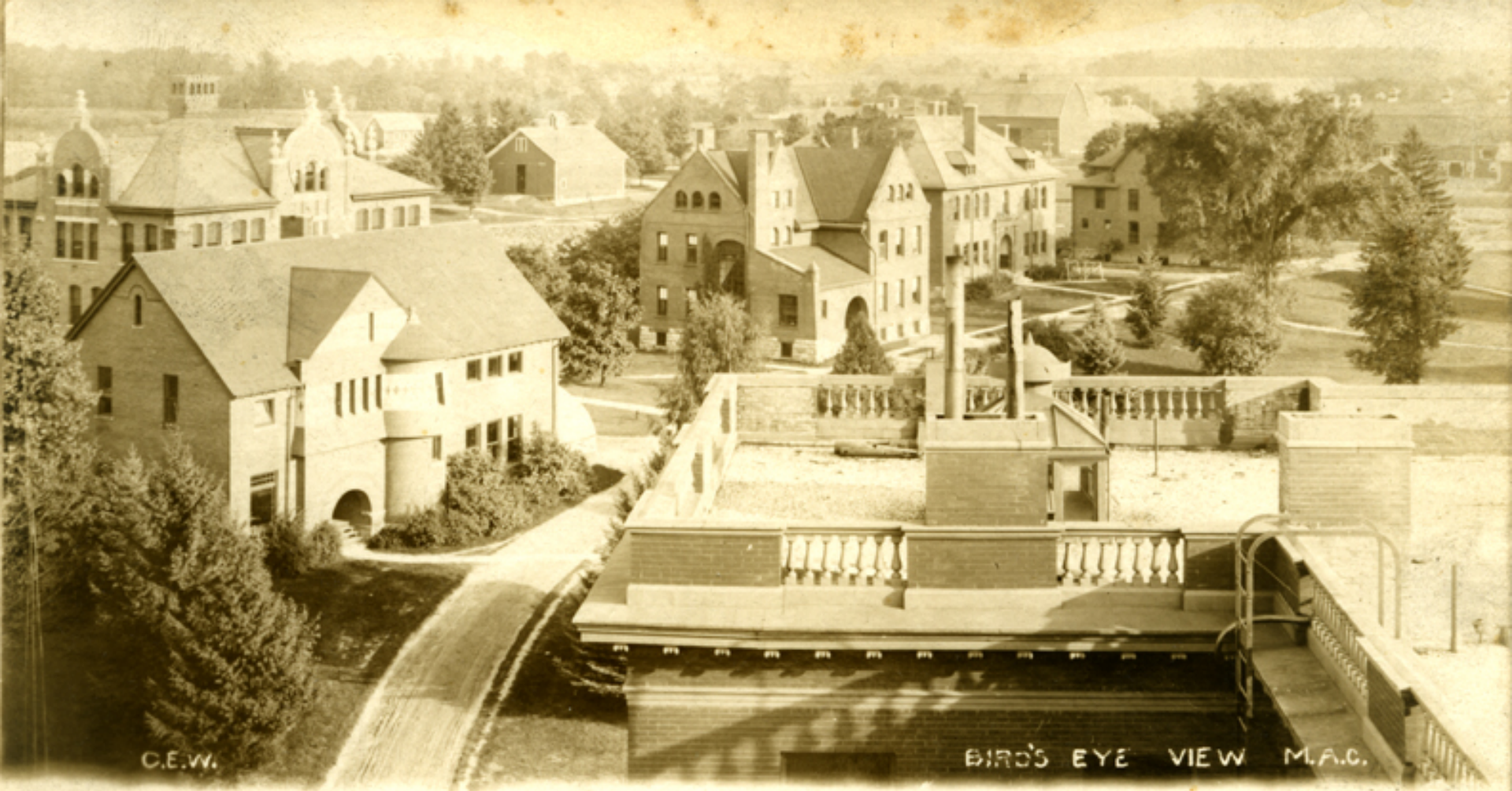
Art can unify, connect and tell a story of a city with a rich, historic past and vibrant, contemporary future. Art will lead people through more traditional areas toward the modern focal point; a farmer's market pavilion that reflects the fashionable architecture of the Broad Art Museum on campus.

The site is a flexible urban space that embodies the strong local character of East Lansing as it ties into the surrounding cafes and boutique shops. Office space and student housing provide more opportunities for community and economic growth in a vibrant, artistic district.

Creating these sorts of connections in the design will create a relationship between the proposed development, the city, the university, and community.

## CONTEXT & ANALYSIS





East Lansing in the 1800's





Site Location



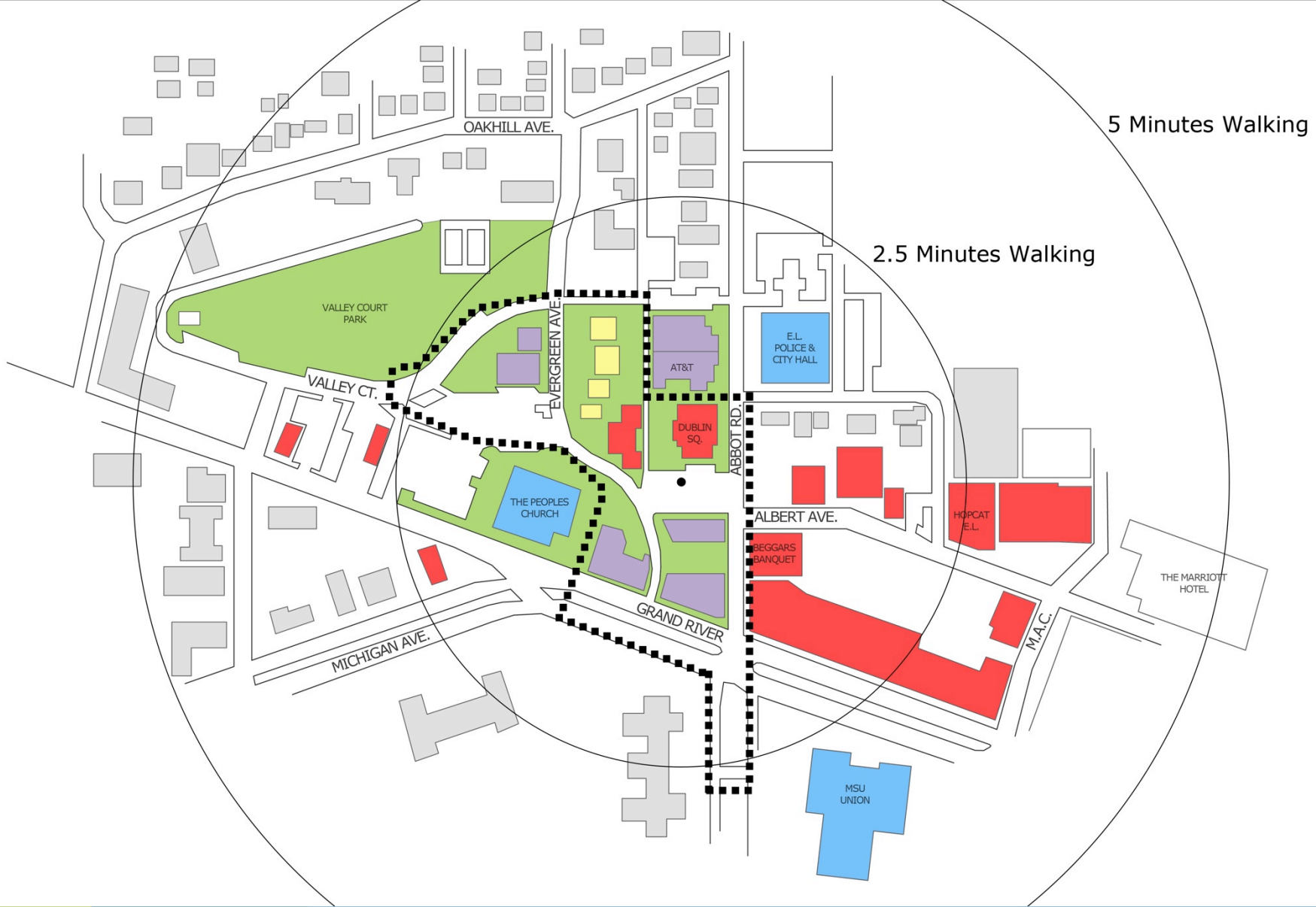


The City in the Past



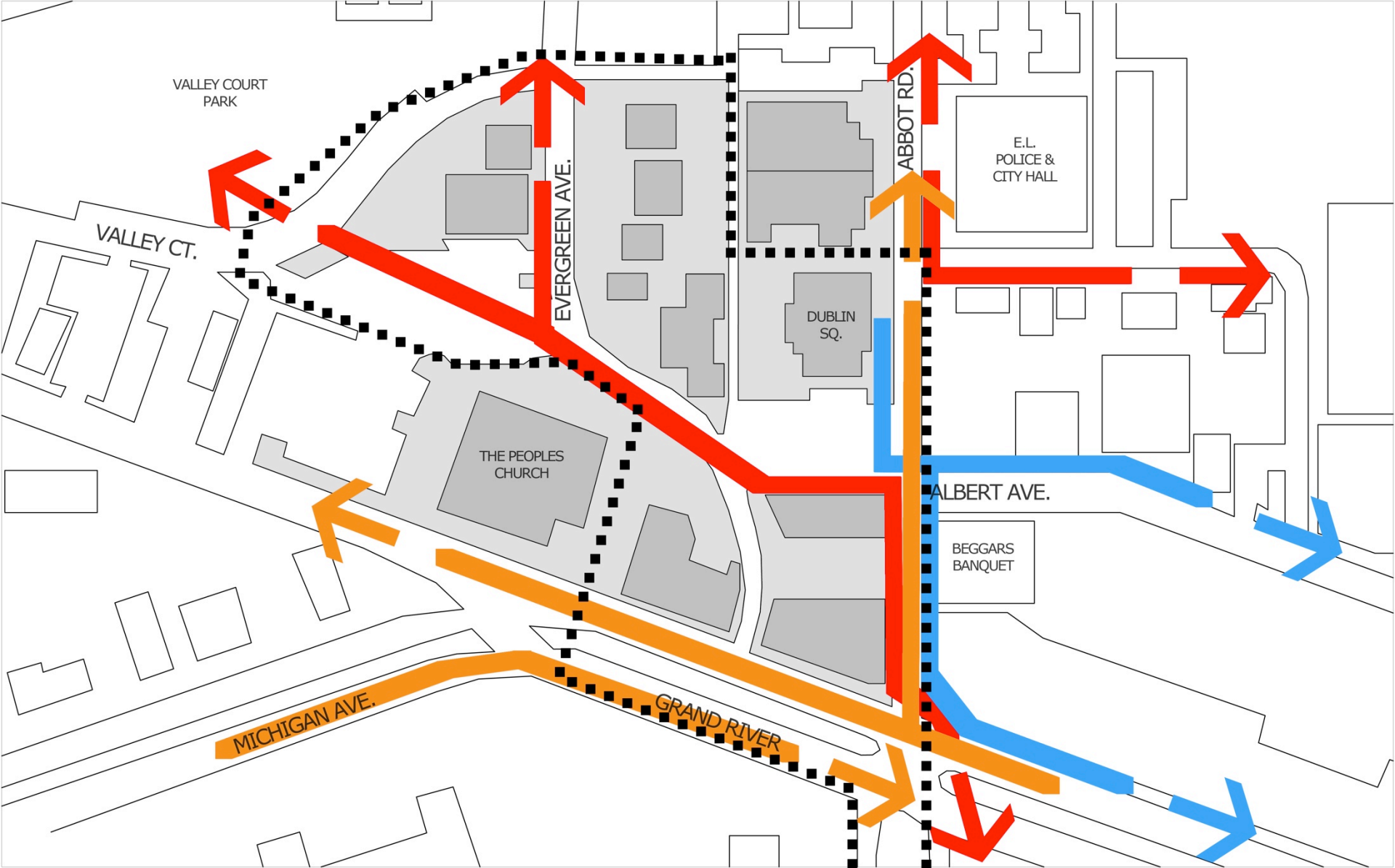


The City Today



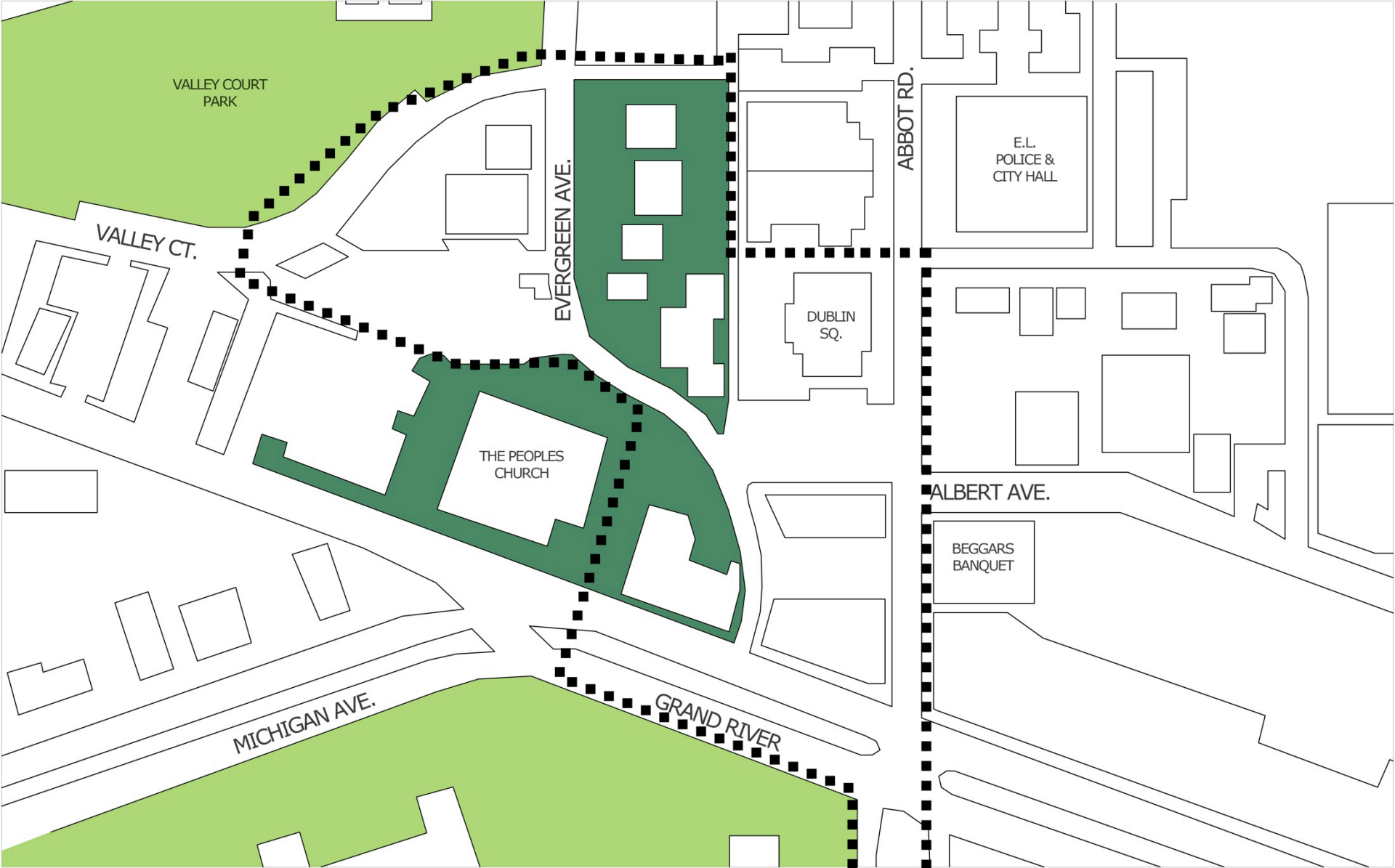
**Site Relations**  
1/8 Mile Radius





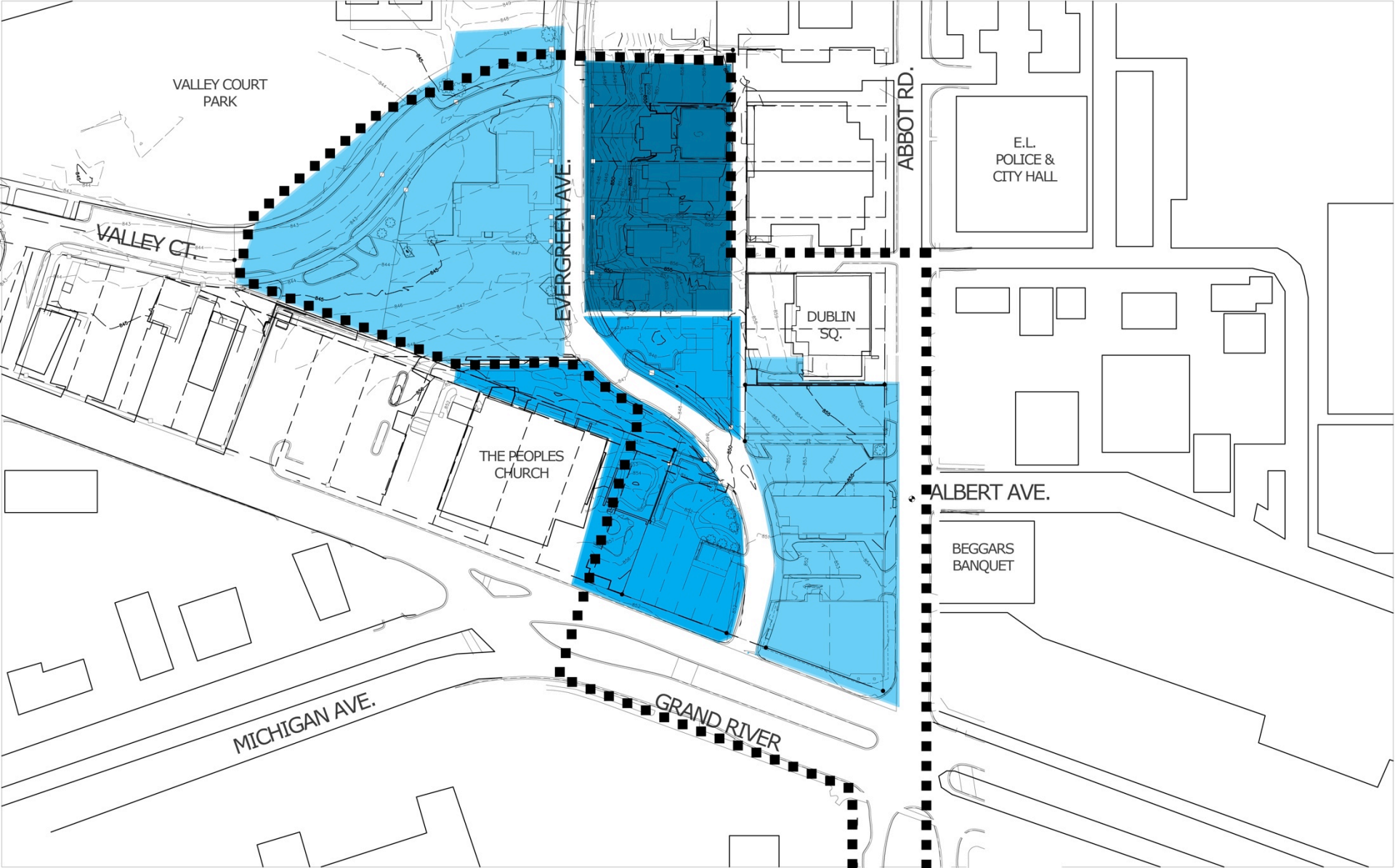
RED: Existing Ped. Business/Commerce Route  
BLUE: Existing Ped. Food/Entertainment Route  
ORANGE: Existing Transit Route

## Pedestrian Circulation



Green Space





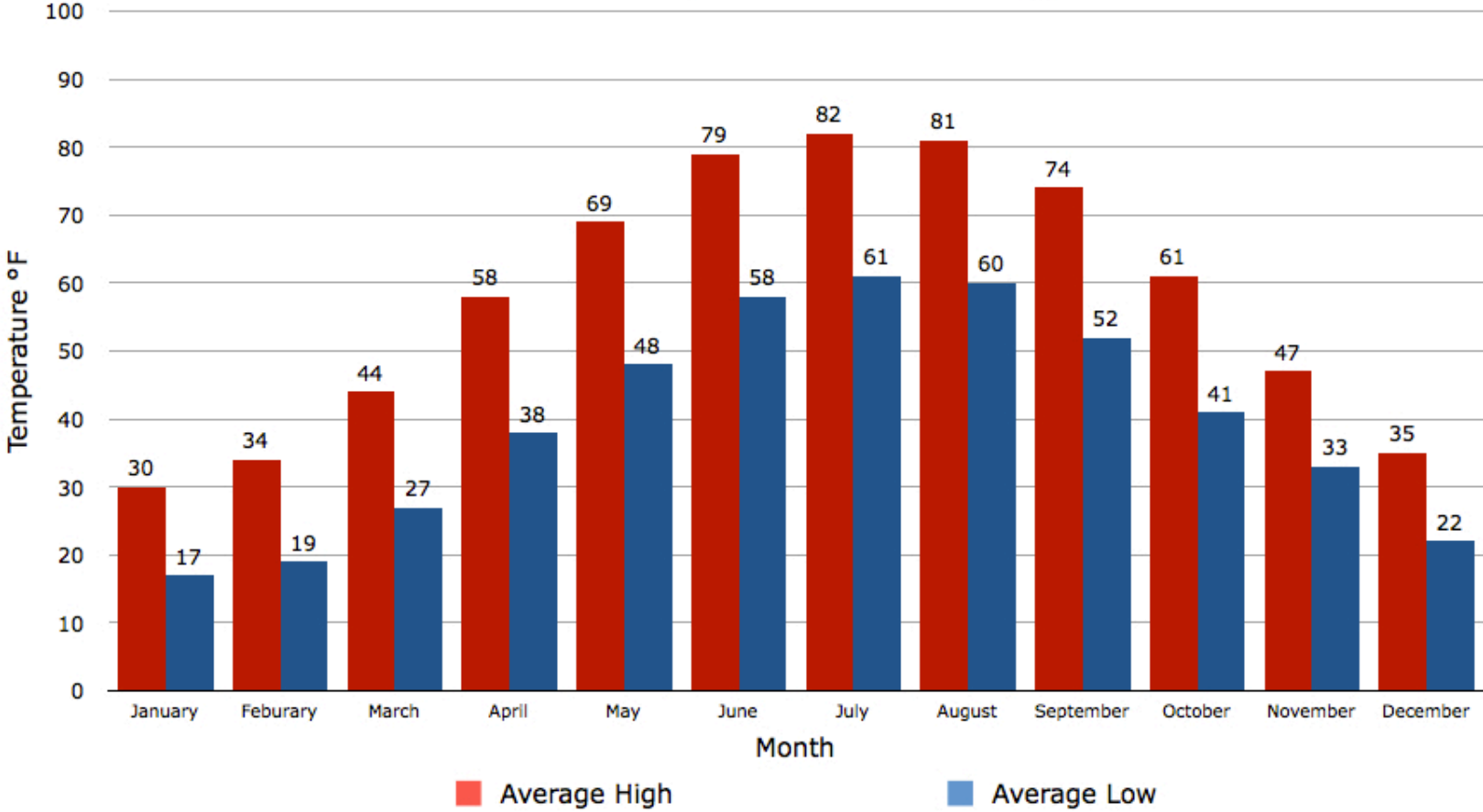
Topography

**What About The Weather?**

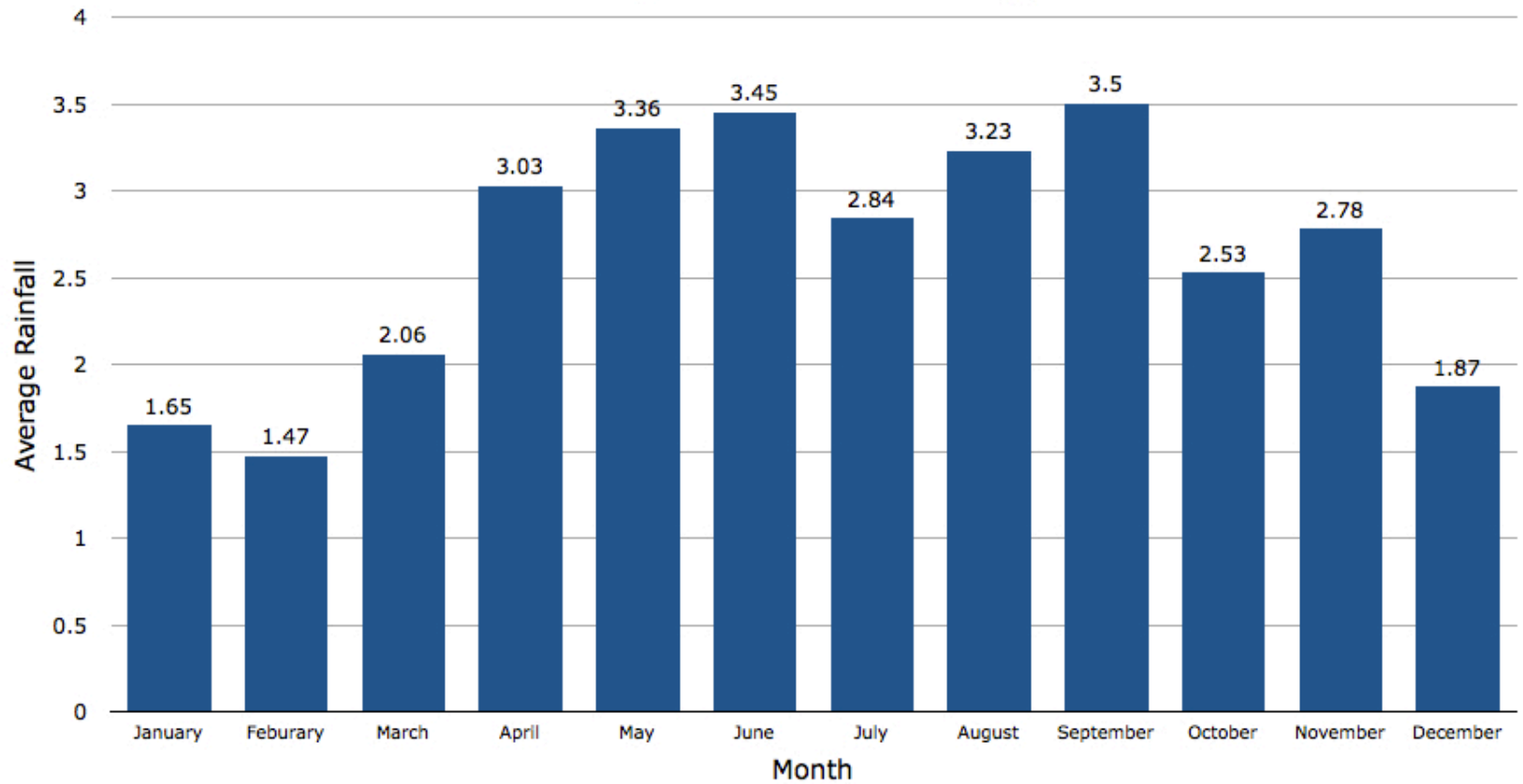




### Average Temperature: East Lansing, MI

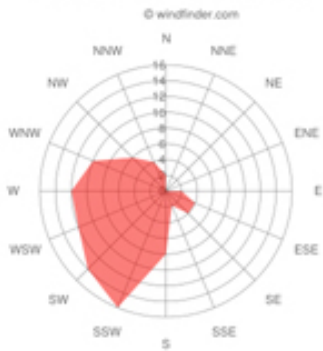


### Average Rainfall: East Lansing, MI

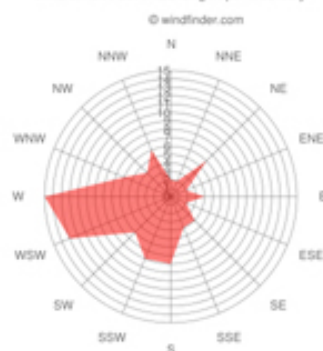




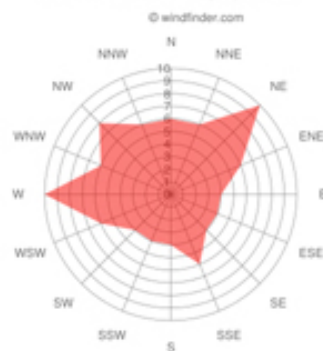
Wind dir. distribution Lansing Airport January



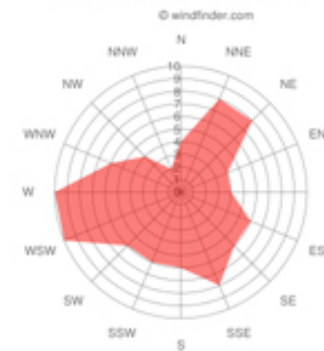
Wind dir. distribution Lansing Airport February



Wind dir. distribution Lansing Airport March

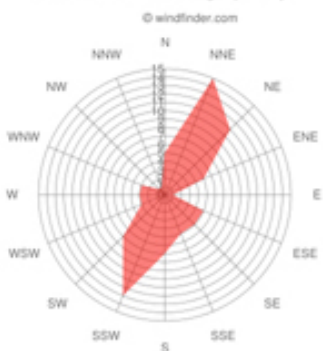


Wind dir. distribution Lansing Airport April

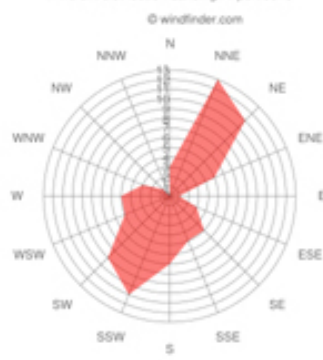


# Average Wind Speed of 10 Knots

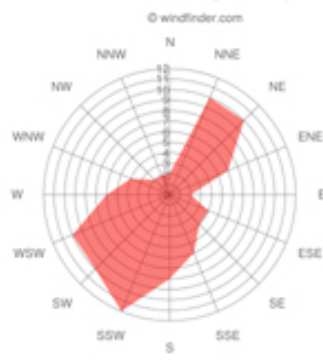
Wind dir. distribution Lansing Airport May



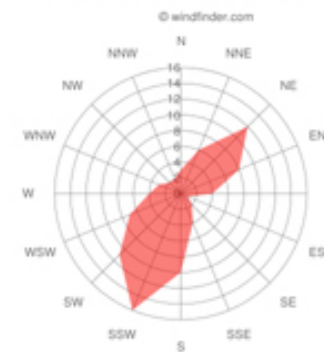
Wind dir. distribution Lansing Airport June



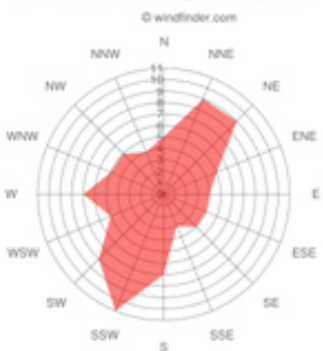
Wind dir. distribution Lansing Airport July



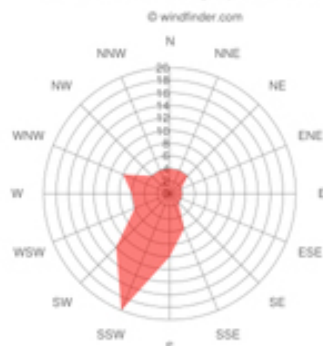
Wind dir. distribution Lansing Airport August



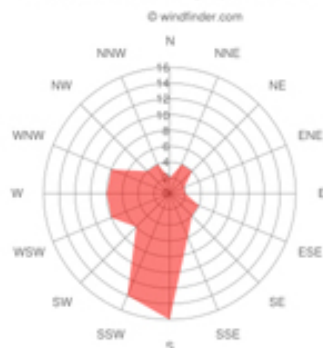
Wind dir. distribution Lansing Airport September



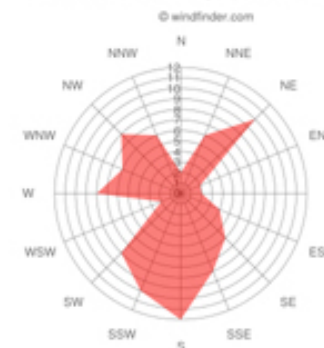
Wind dir. distribution Lansing Airport October



Wind dir. distribution Lansing Airport November



Wind dir. distribution Lansing Airport December



## Weather Facts

- + July is the warmest month
  - + January is the coolest month
  - + September is the wettest month
  - + February is the driest month
  - + July has the most clear days
  - + December has the most cloudy days
- + 175 Days that are at least Partly Sunny





**PEOPLE WANT TO SEE, AND BE SEEN**

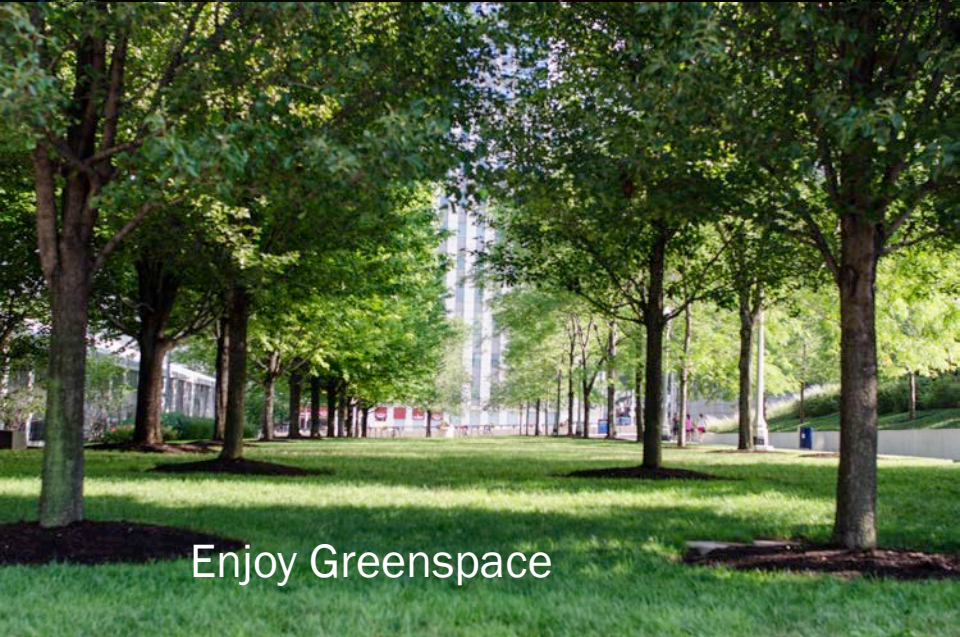




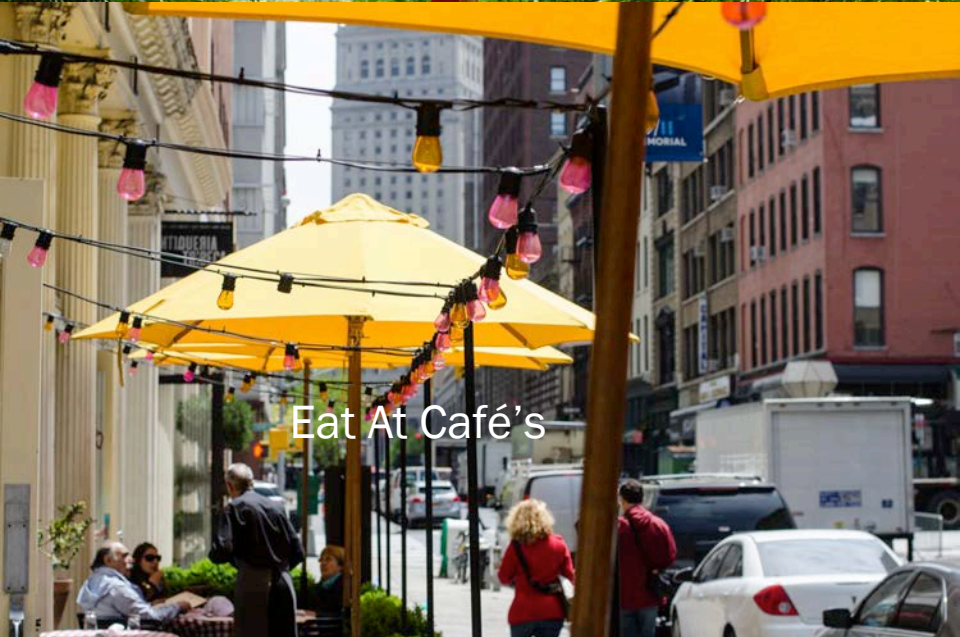
Sit Outside



View Art



Enjoy Greenspace



Eat At Café's

**How Do We Get People There?**






East Lansing, A City of the Arts

***‘Creating Community  
Through People, Parks, &  
Programs’***

East Lansing Department of Parks, Recreation, & Arts



# MASTER PLAN





- RESIDENTIAL
- COMMERCIAL
- INDUSTRIAL
- COMMERCIAL/RESIDENTIAL
- INSTITUTION
- ROADS
- ACTIVE OPEN GREEN



NOT TO SCALE



# REALIGN ROADS





# BUILDING PLACEMENT





- RESIDENTIAL
- COMMERCIAL
- INDUSTRIAL
- COMMERCIAL/RESIDENTIAL
- INSTITUTION
- ROADS
- ACTIVE OPEN GREEN



NOT TO SCALE



GREEN SPACE





- RESIDENTIAL
- COMMERCIAL
- INDUSTRIAL
- COMMERCIAL/RESIDENTIAL
- INSTITUTION
- ROADS
- ACTIVE OPEN GREEN



NOT TO SCALE

# ART AS CONNECTION



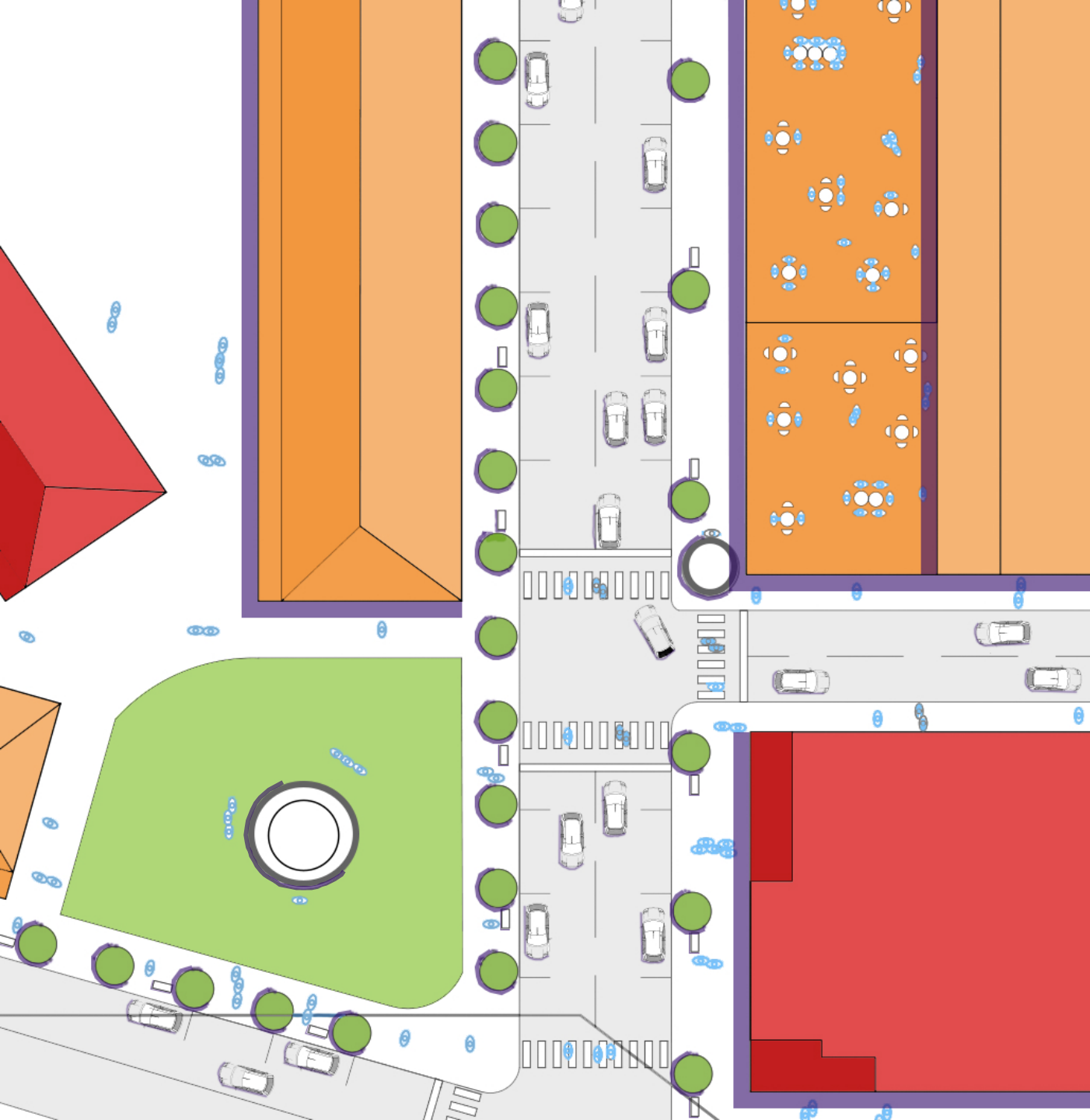


- RESIDENTIAL
- COMMERCIAL
- INDUSTRIAL
- COMMERCIAL/RESIDENTIAL
- INSTITUTION
- ROADS
- ACTIVE OPEN GREEN

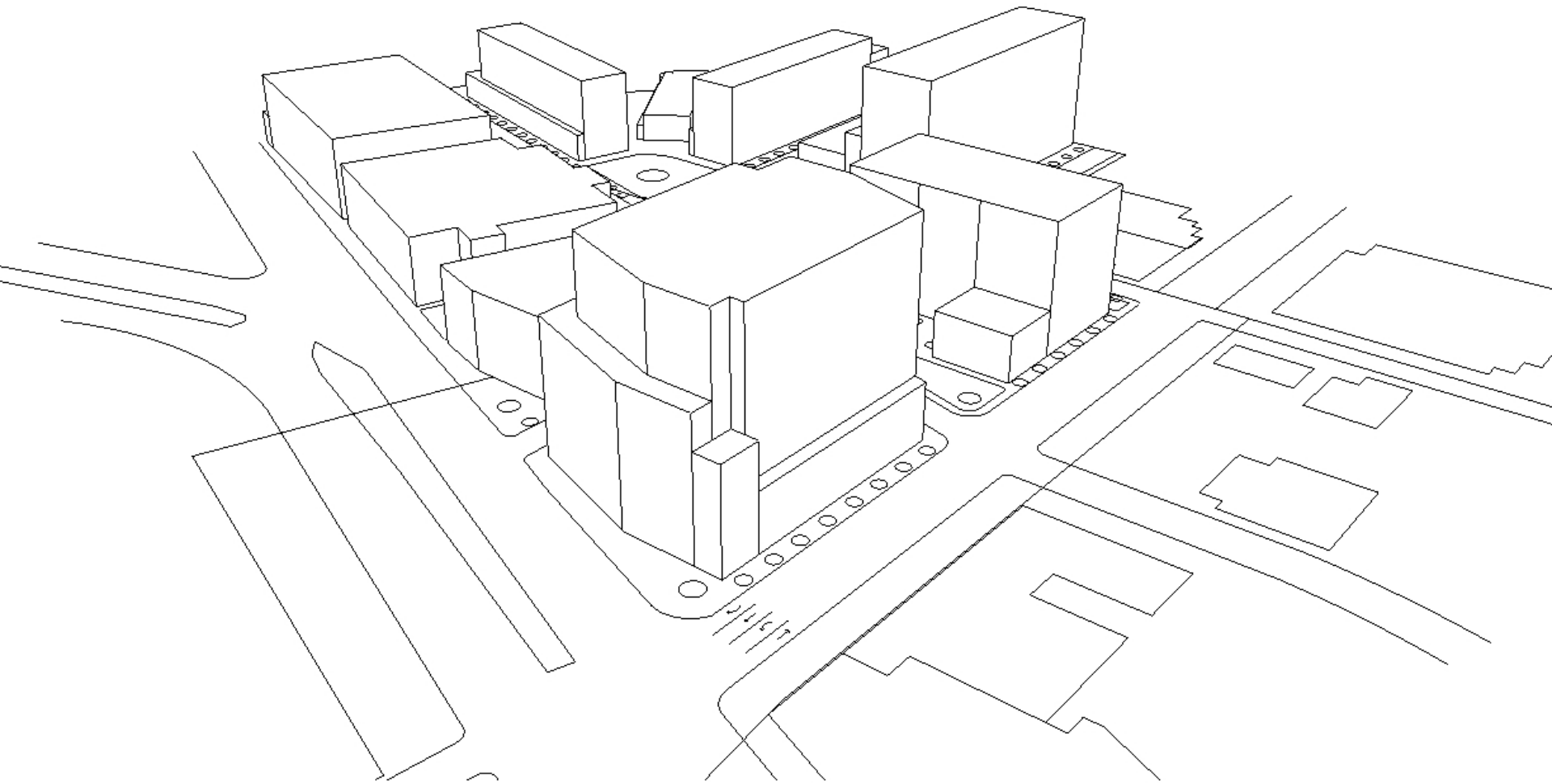


NOT TO SCALE

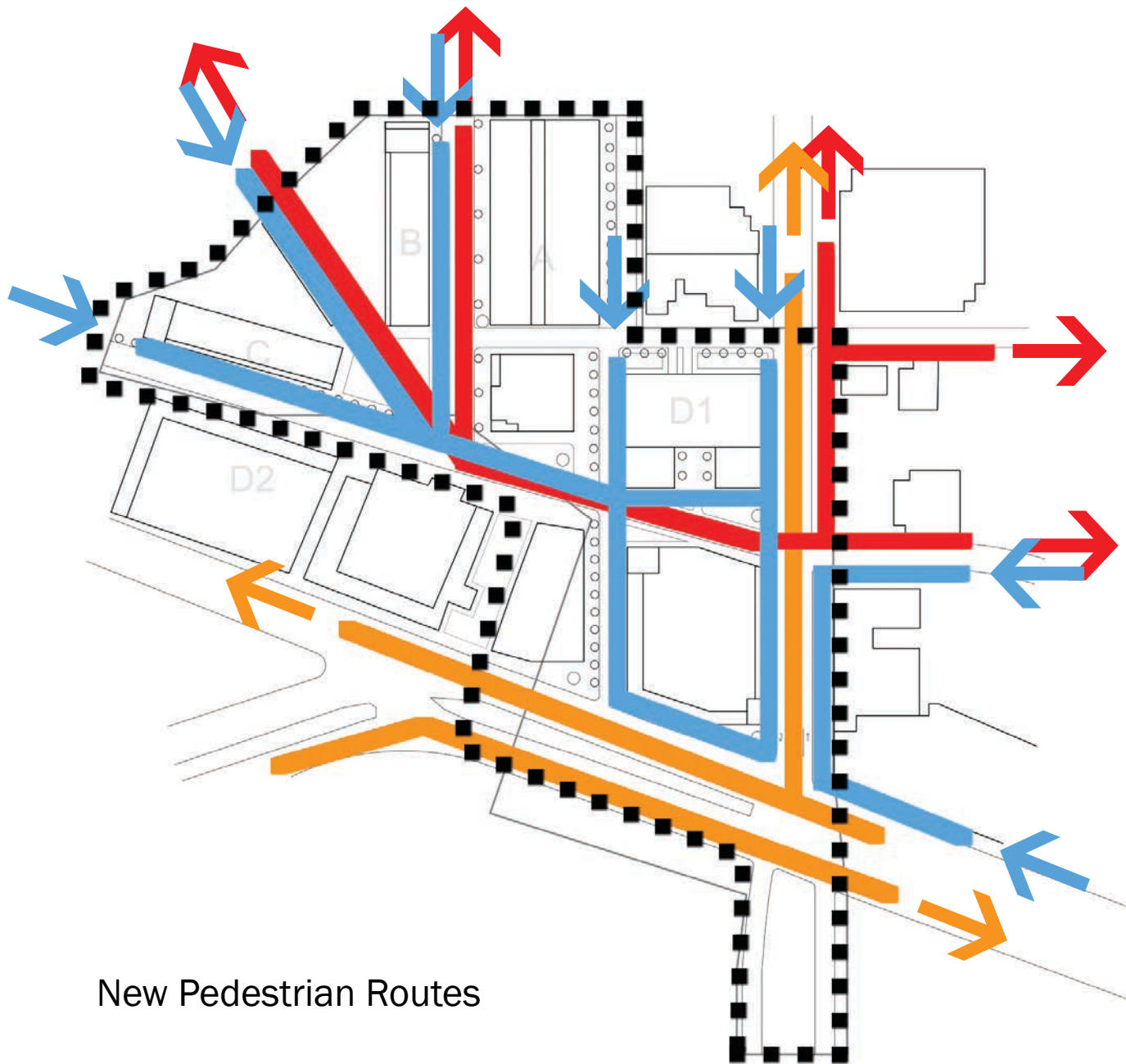




Linden and Evergreen  
intersection



Aerial Perspective



New Pedestrian Routes

# SITE AMENITIES



Alcott  
Light  
Post



Austin  
Benches



Sorella  
Planters



Chipman  
Tables &  
Chairs

BY LANDSCAPE FORMS



# SITE AMENITIES



Poe  
Litter  
Receptacles



Hawthorne  
Path Finders



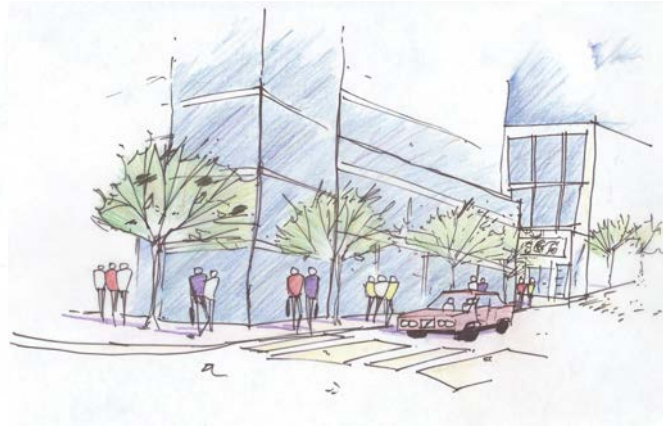
Edmund  
Bike  
Racks



Removable  
Stop  
Bollards

# SEQUENCE SKETCHES

Walking north on Abbot Road

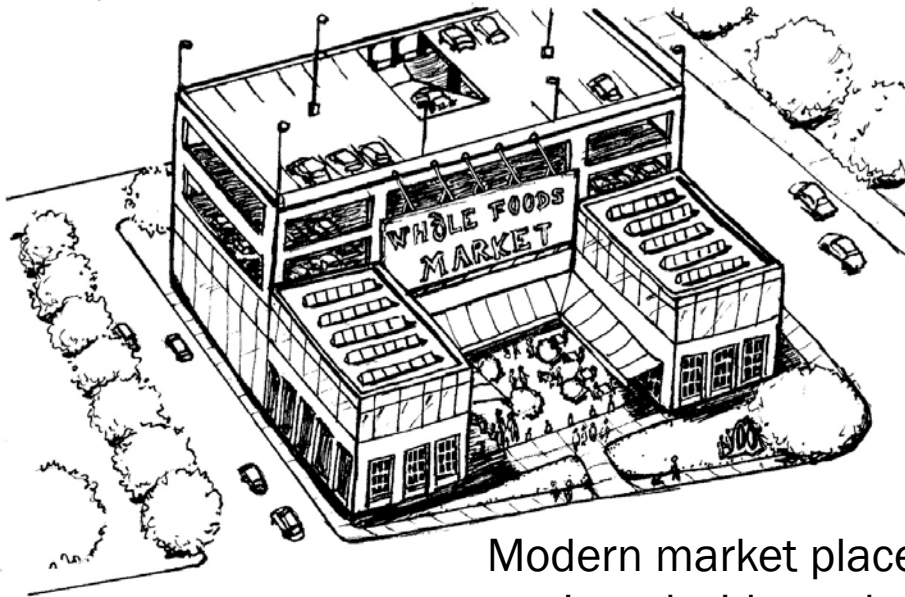


Walking south on Evergreen Road





# SITE VIEW SKETCHES



Modern market place equipped with outdoor seating and public space.



Evergreen Road Streetscape

## Farmer's Market Pavilion

Multiple festivals will take place at in this park. The pavilion's architecture reflects that of the Eli Broad Art Museum by mimicking it's metal material and pyramidal texture & geometric forms.

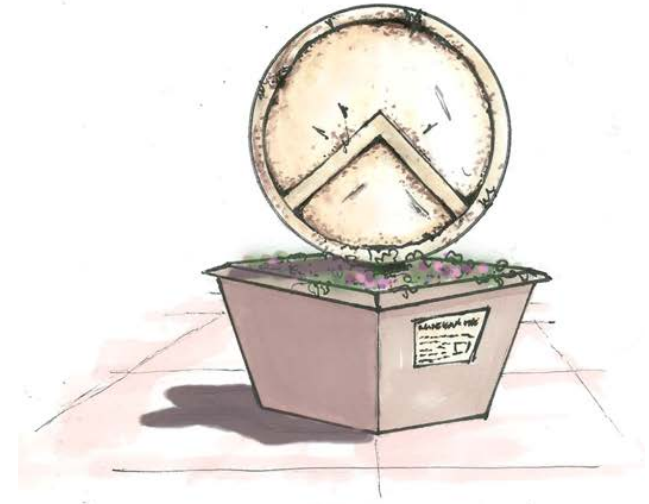


# ARTWORK IN THE LANDSCAPE





Interactive Spartan helmet to encourage the idea of place making within Michigan State University.



Spartan shield made from copper to connect to the students in East Lansing



A mixed media sculpture constructed from the rebel of the demolished buildings to form the skyline along Grand River Avenue.



**THANK YOU**  
ART AS CONNECTION