



United States Department of Agriculture

Environmental Quality Incentives Program (EQIP)

On-Farm Energy Initiative



- NRCS provides technical and financial assistance that:
 - Quantifies how energy can be used more efficiently to reduce input costs
 - Increases productivity per unit of energy consumed by equipment and lighting
 - Reduces air pollutants and greenhouse gas emissions caused when energy is generated for agricultural use



EQIP On-Farm Energy Initiative



- Identify ways to reduce energy use on farms through an Agricultural Energy Management Plan (AgEMP), also known as an on-farm energy audit.
- Provide assistance to implement conservation practices that address inefficient use of on-farm energy.



EQIP On-Farm Energy Initiative



- Financial assistance is available for Agricultural Energy Management Plans (AgEMP)
 - Must be completed by a NRCS-certified Technical Service Provider (TSP)
 - Once complete, a producer may apply for assistance to implement conservation practices that address inefficient use of on-farm energy noted in the plan.



EQIP On-Farm Energy Initiative



- Agricultural Energy Management Plans (AgEMP)
 - Itemized energy use by individual systems to establish a baseline for electricity and other fuel improvements
 - Recommendations for equipment improvements and upgrades
 - Amount of potential energy reductions and financial savings for each recommendation
 - Cost estimates of potential improvements
 - Length of expected payback for energy efficiency upgrades



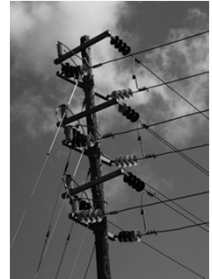
Already have an energy audit?

- Does it comply with a type-2 on-farm energy audit per the American Society of Agricultural and Biological Engineers (ASABE) S612 standard? If yes...
 - This allows an eligible producer to immediately apply for assistance to implement conservation practices that address inefficient use of on-farm energy noted in the audit.



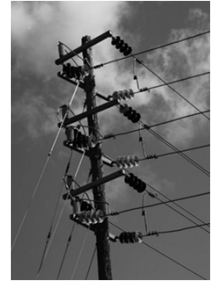
Available Conservation Practices

- Agricultural Energy Management Plan
- Farmstead Energy Improvement
- Irrigation Water Management
- Pumping Plant
- Lighting System Improvement
- Building Envelope Improvement





Available Conservation Practices



- In other words...
 - Financial assistance is available for implementation of improvements for:
 - ✓ Lighting
 - ✓ Plate coolers
 - ✓ Ventilation and fans
 - ✓ Irrigation pumps
 - ✓ Grain dryers
 - ✓ Greenhouse improvements
 - ✓ Maple syrup evaporators
 - ✓ Heating and refrigeration units
 - ✓ Insulation and building envelope sealing
 - ✓ Motor controls and variable speed drives

Sample Payment Schedule

Practice Code	Cost Share Program	Practice Name	Component	Unit Type	Unit Cost	Cost Type	Share Rate
128	EQIP	Agricultural Energy Management Plan (AgEMP)	Irrigated Medium, 50 to 499 acres	No	4091.53	PR	100
374	EQIP	Farmstead Energy Improvement	Ventilation - Replacement of Conventional Exhaust Fan with High Volume, Low Speed, Efficient Exhaust Fan	No	1012.66	PR	100
374	EQIP	Farmstead Energy Improvement	Plate Cooler	No	4926.13	PR	100
670	EQIP	Lighting System Improvement	Lighting - Replace Existing Luminaire With LED Lamp	No	16.72	PR	100
672	EQIP	Building Envelope Improvement	Building Envelope - Attic Insulation	SqFt	.54	PR	100



EQIP On-Farm Energy Initiative

- EQIP apps must meet criteria for:
 1. Producer eligibility
 2. Land eligibility, and
 3. The proposed project must address at least one natural resource concern.
 - Natural resource concerns addressed by the On-Farm Energy Initiative:
 - Inefficient Energy Use-Equipment and Facilities
 - Inefficient Energy Use-Farming/Ranching Practices





Producer Eligibility

- Applicant must be an agricultural producer: engaged in ag production or forestry management or have an interest in the agricultural or forestry operation associated with the land being offered for enrollment in EQIP.
- Applicant must have control of the land for proposed contract period.





Producer Eligibility

- Applicant must be in compliance with
 - Highly erodible land & wetland conservation compliance provisions
 - Adjusted gross income requirements
 - Payment limitation requirements
- Entities
 - DUNS/SAM





United States Department of Agriculture

Land Eligibility



- Land must be agricultural land, nonindustrial private forest land, or other land on which agricultural products, livestock, or forest-related products are produced.

EQIP On-Farm Energy Initiative

- More questions?

– Contact your local USDA-NRCS District Conservationist or:

Becky Otto

Environmental Quality Incentives Program (EQIP) Coordinator

USDA-NRCS-MI

(517) 324-5257

becky.otto@mi.usda.gov