

A Brief Overview of Indiana Water Management Programs and Regulations



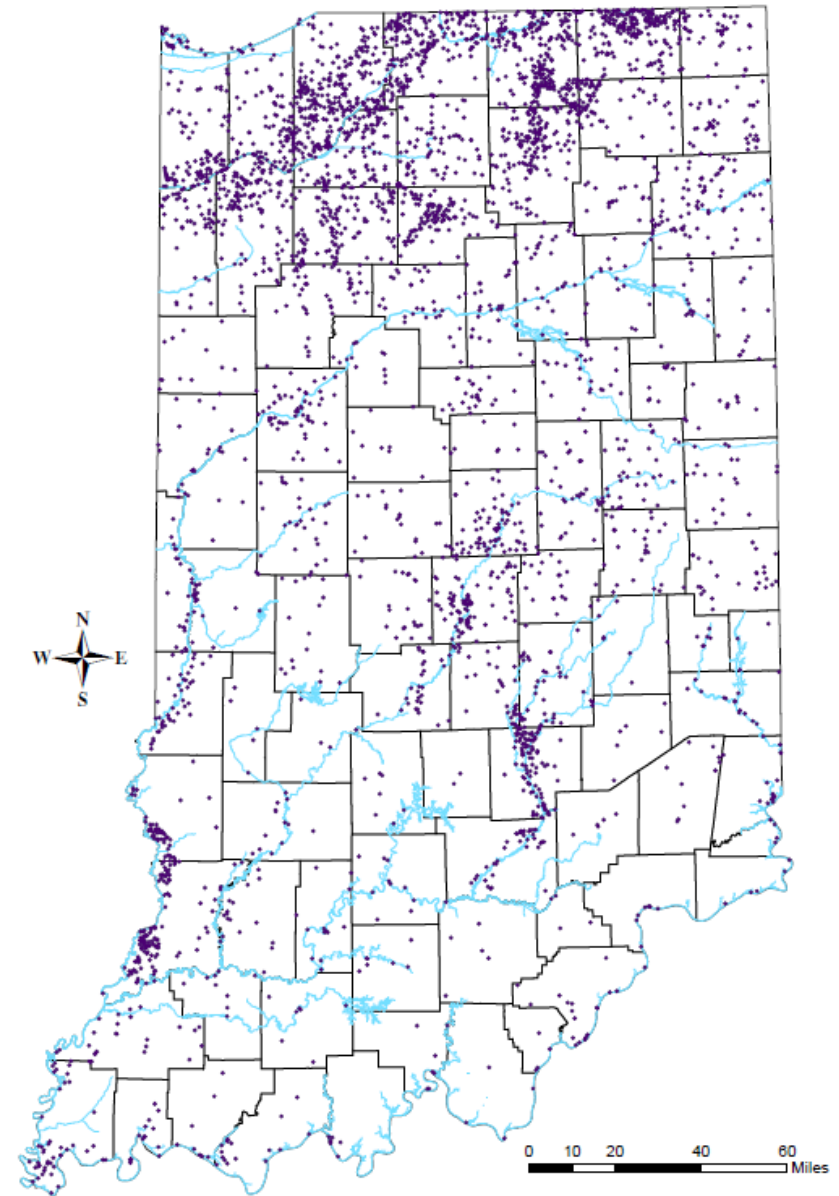
Indiana Code 14-25-7-15: SWWF Registration and Water Use Reporting



IC 14-25-7: Water Resources Management Act

- Enacted in 1983
- Requires registration of all SWWF (gw & sw)
- Facility defined as greater than 100,000 gpd capability
- Capability is aggregate of all wells & intakes
- Annual water use reporting
- Approximately 4050 SWWFs currently registered

Location of Significant Water Withdrawal Facilities in Indiana



2014 Indiana Registered SWWFs

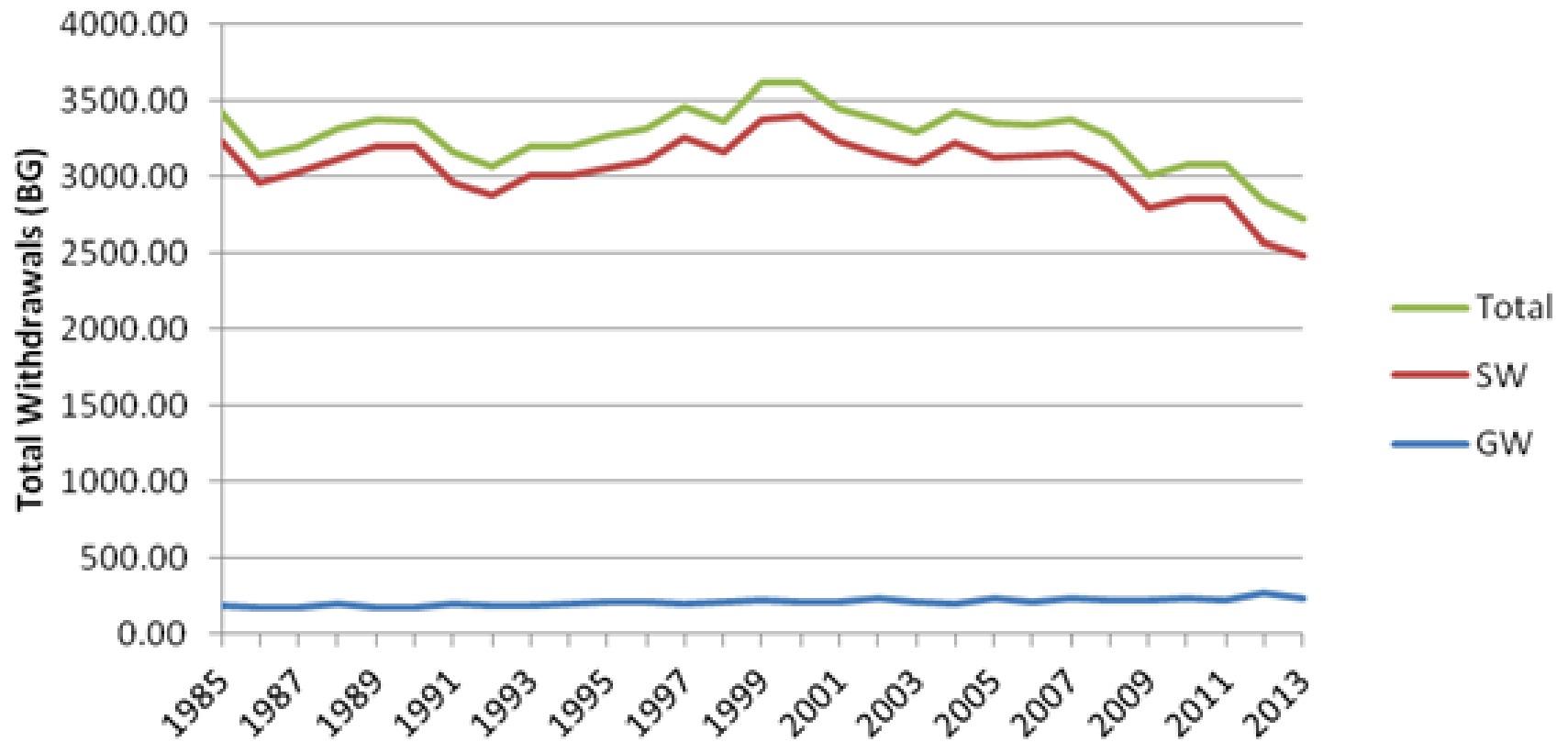
<i>Water Use Code</i>	<i>Number of Facilities</i>	<i>Number of Wells</i>	<i>Number of Intakes</i>
EP	105	266	112
IN	381	704	288
IR	2636	3580	829
MI	144	246	56
PS	721	2205	70
RU	63	167	14
TOTAL	4050	7168	1369

SWWF Water Use Reporting

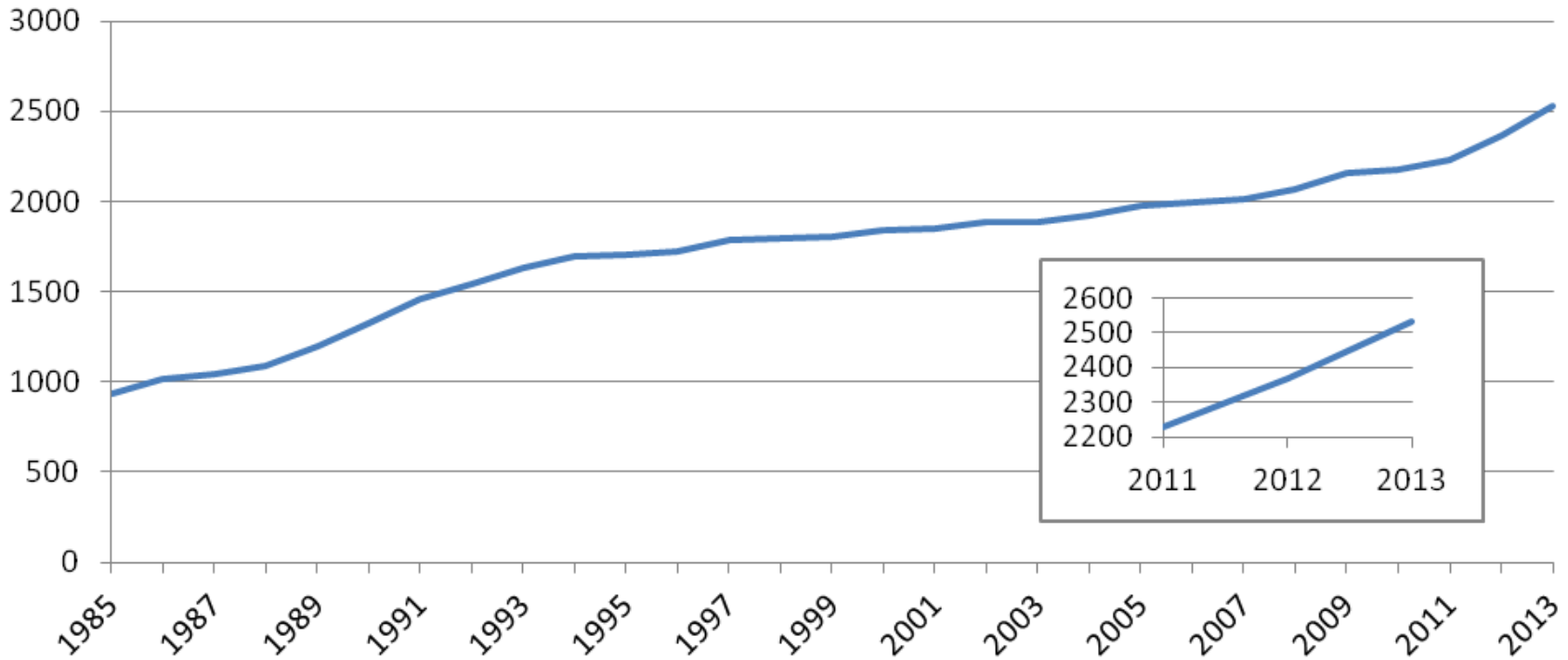
2013 STATE TOTALS

	<i>Withdrawals (BG)</i>	<i>Capacity (MGD)</i>	<i>Withdrawals vs Capacity</i>	<i>Total Number</i>
Surface Intakes	2488	17355	39.3%	1374
Wells	232	5758	11.0%	7020
TOTAL	2720	23113	32.2%	8394
Facilities				3953

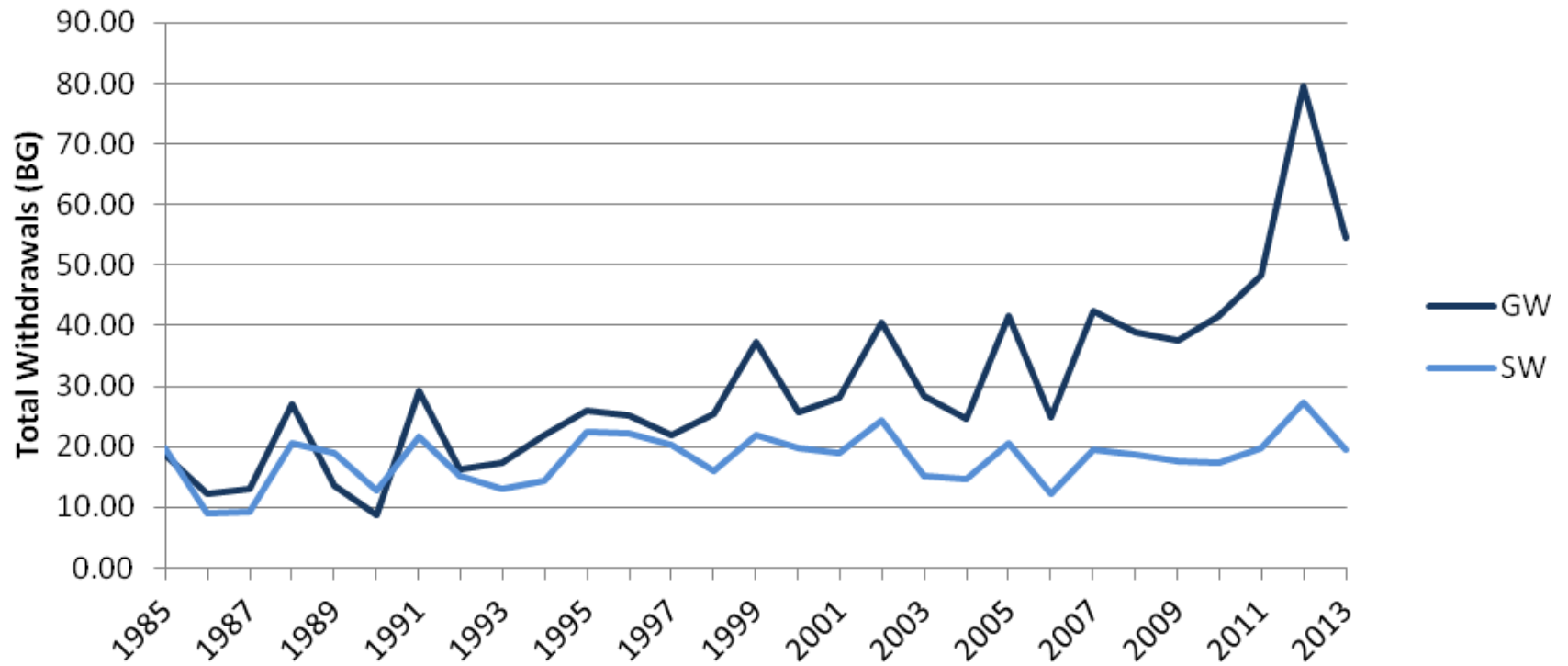
Total Annual Withdrawals 1985-2013



Registered Significant Water Withdrawal Irrigation Facilities in Indiana 1985-2013



Annual Ground and Surface Water Withdrawals for Irrigation Facilities in Indiana 1985-2013



Division of Water Webpage

 **DNR HOME**

WATER

- About Us
- Contact Us
- Community Assistance & Information
- Dams & Levees
- Ground Water / Wells
- Lake Michigan
- Regulatory Permit Programs and Related Information
- Publications
- Statutes & Rules
- Surface Water
- Water Availability / Use / Rights**
- Forms
- Site Information
- Related Links



Find out if you are in a floodplain

 **Online Services**

- File a Water Permit
- Search Existing Water Permits
- Search Water Well Records
- Is Your Property in a Floodplain?

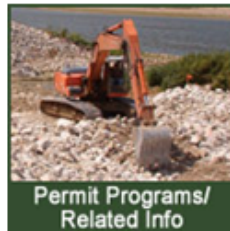
MORE ONLINE SERVICES »

SUBSCRIBER CENTER »

 **Top FAQs** I Want To...

1. Where can I get an Indiana Map (aerial, highway..)
2. How do I know if I am in a floodplain?
3. How can I find out when new maps will become available for my community? How can I get more information?
4. What is the Indiana Floodplain Mapping Initiative?
5. How do I obtain Hunting or Fishing License (License or Record)?
6. Campsite reservations

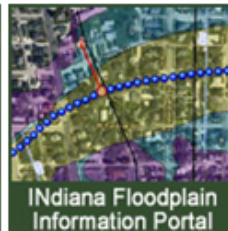
Featured Topics



Permit Programs/
Related Info



Indiana Floodplain
Mapping



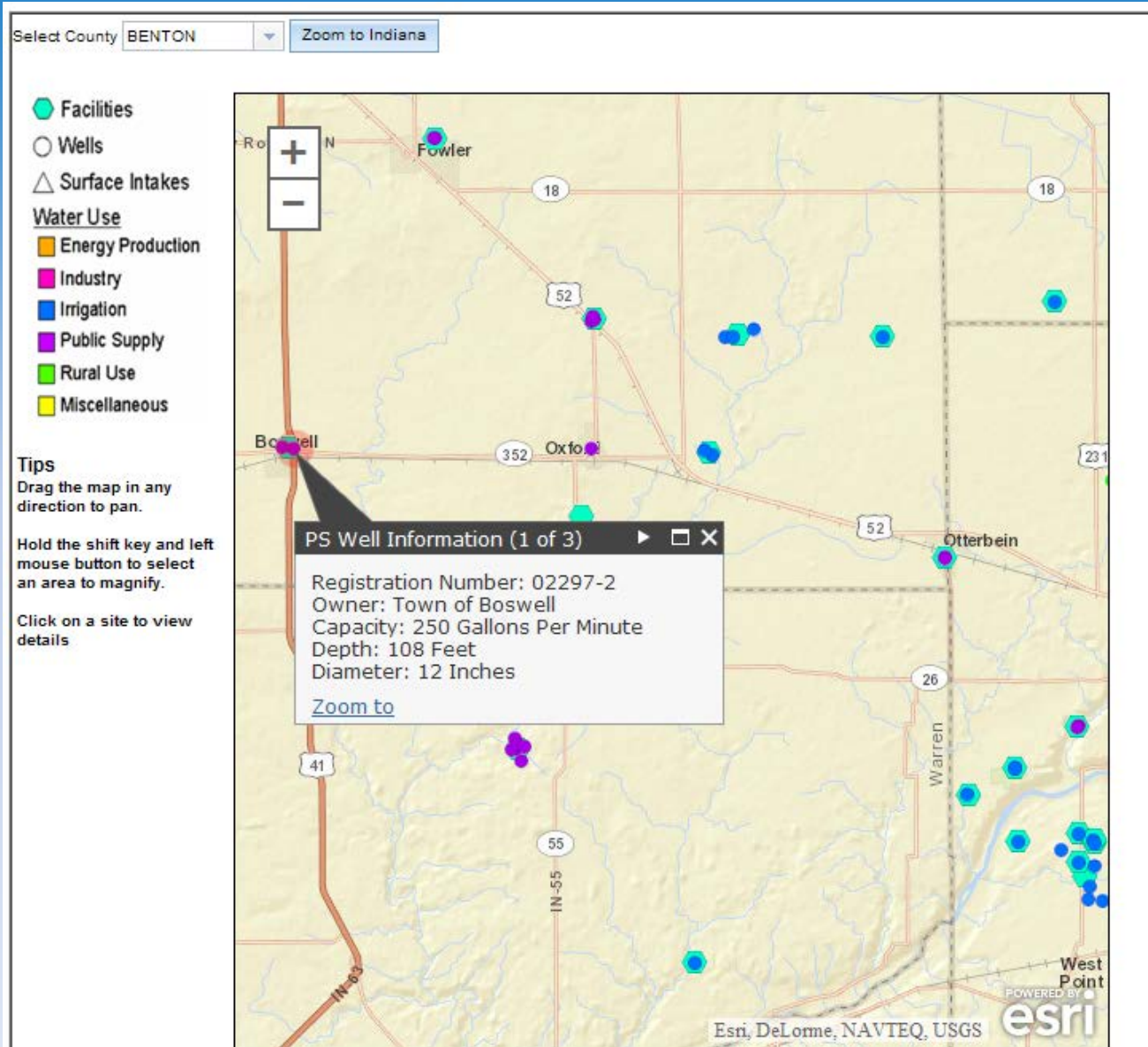
Indiana Floodplain
Information Portal



Water Well
Record Database

NEW! Division of Water is going green! In order to receive a reply from us, please add water_inquiry@dnr.IN.gov to your safe contact list. Please note that the

SWWF Location Map



Indiana Code 14-25-4: Water Rights: Emergency Regulation



Indiana Code 14-25-4

- Provides for “Timely and Reasonable Compensation” to owners of domestic wells affected by high capacity ground-water pumpage
- Provides for restrictions on high capacity ground-water pumpage under certain conditions

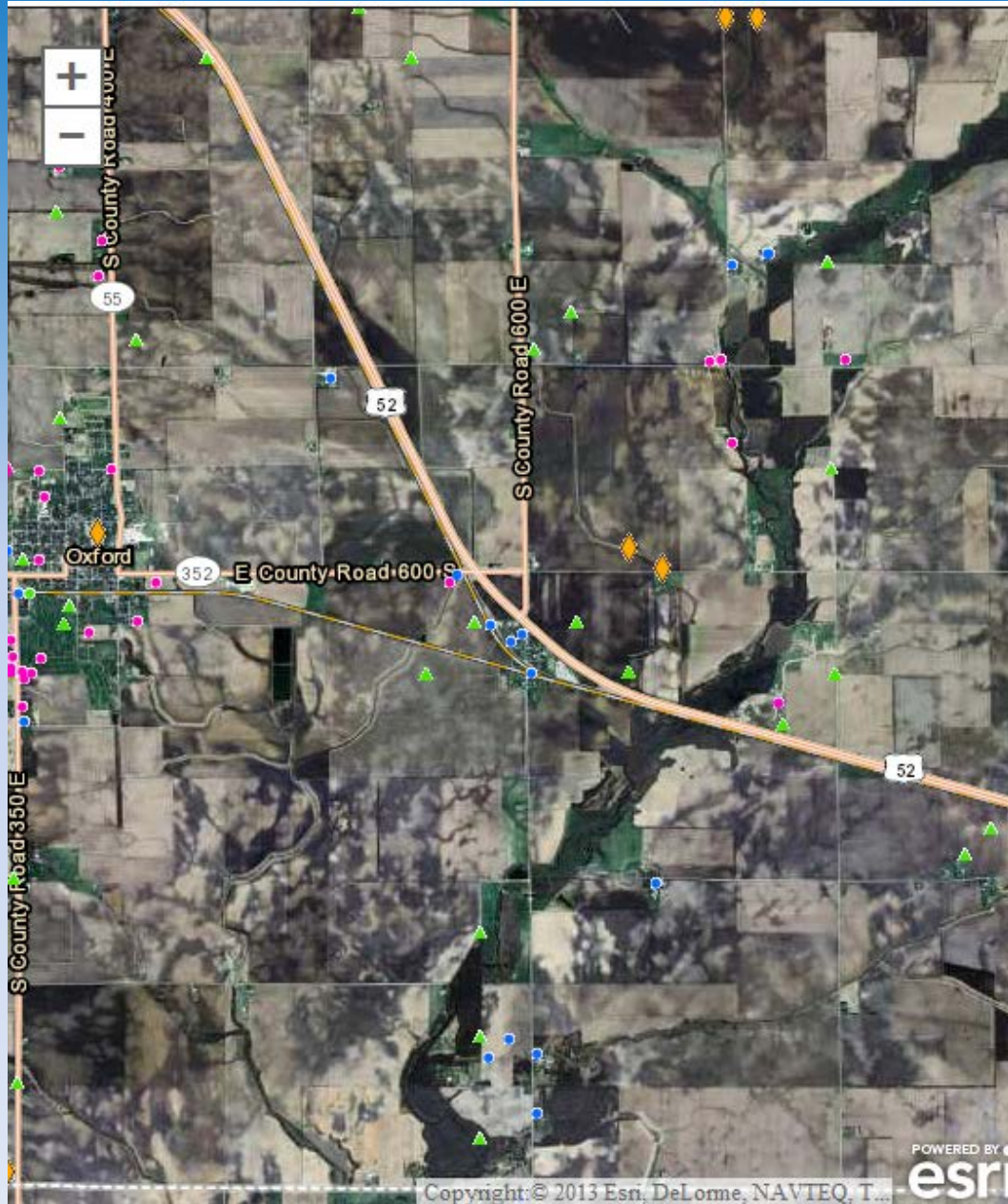
2013 Water Rights Issues in Benton and Warren County Area



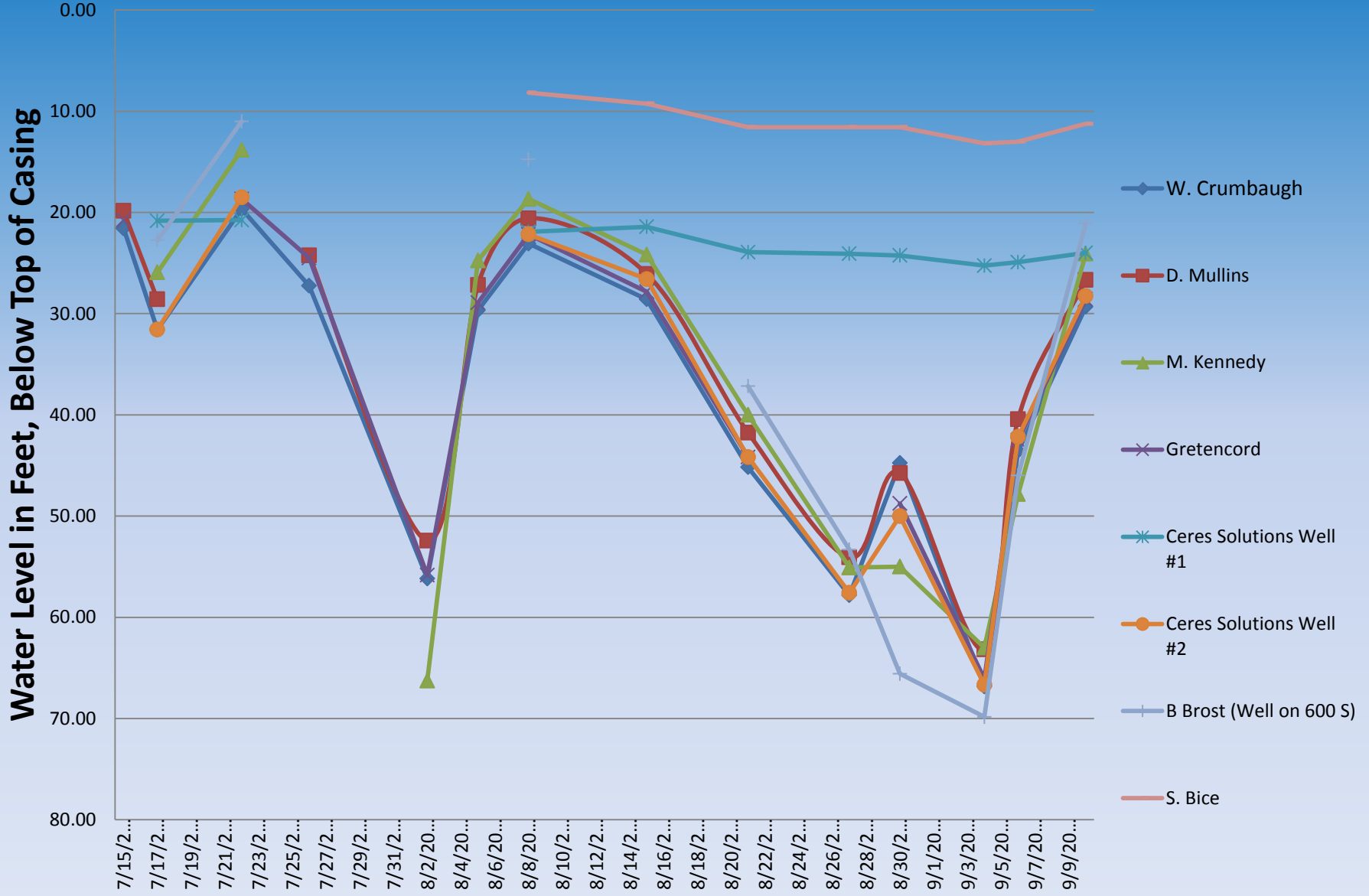
Benton & Warren Counties: 2013 GW Level Documentations and Reported Well Failures

- **Benton Co.-** Over 130 Requests for Water Level Documentation (Templeton, Goodland, Fowler, Oxford, Otterbein, Ambia); 34 Well Failures Reported (invoices received)
- **Warren Co.-** Approximately 65 Water Levels Documented (Attica, Hedrick, State Line City, Williamsport); 26 Well Failures Reported (invoices received)

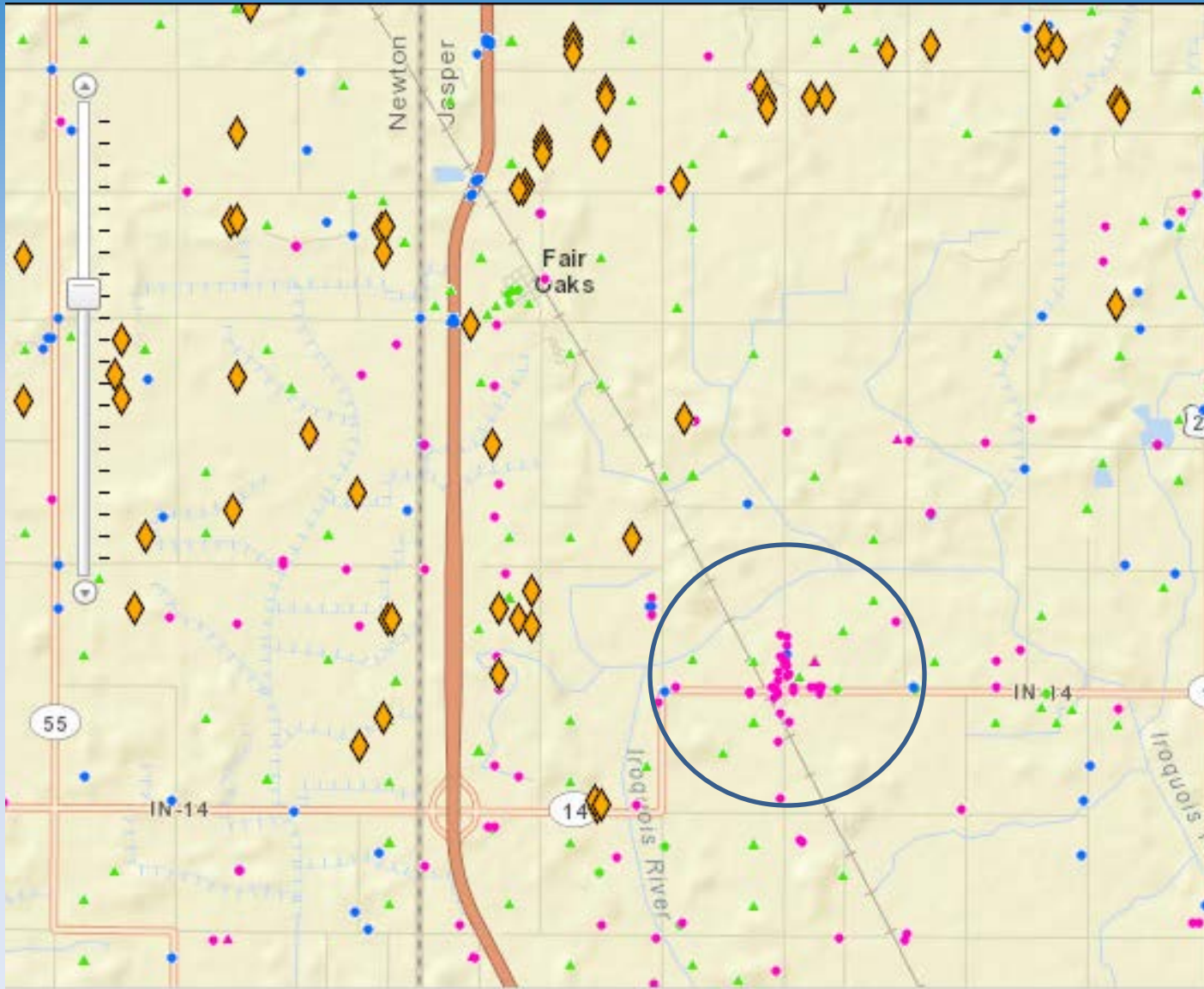
Town of Templeton; Benton County

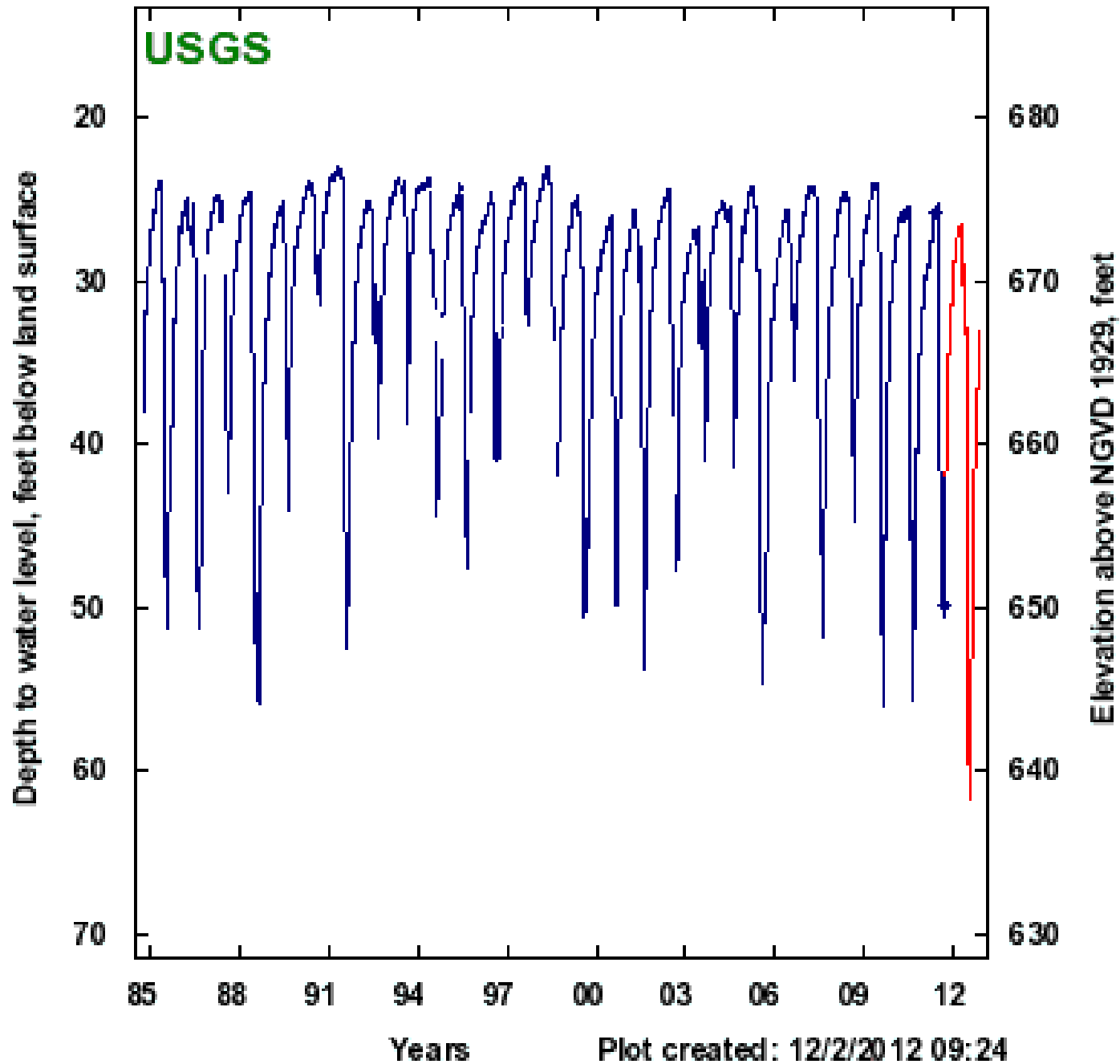


Templeton Ground Water Network; Benton County



Town of Parr; Jasper Co.





**Approximately 100
Water Rights
Investigations
Conducted
Annually**

**Most Resolved
Without Invoking
Provisions Of
IC 14-25-4**



IC 14-25-15: Indiana's Implementation of Great Lakes_St. Lawrence River Basin Water Resources Compact



Water Withdrawal Thresholds under Rule 312 IAC 6.2 (Final Rule Effective 9/3/2014)

Permit Required for:

- Withdrawals greater than 5 MGD (90 day ave.) from Lake Michigan
- Withdrawals greater than 1 MGD (90 day ave.) from other ground water or surface water source
- Withdrawals greater than 100,000 GPD from a Salmonid Stream

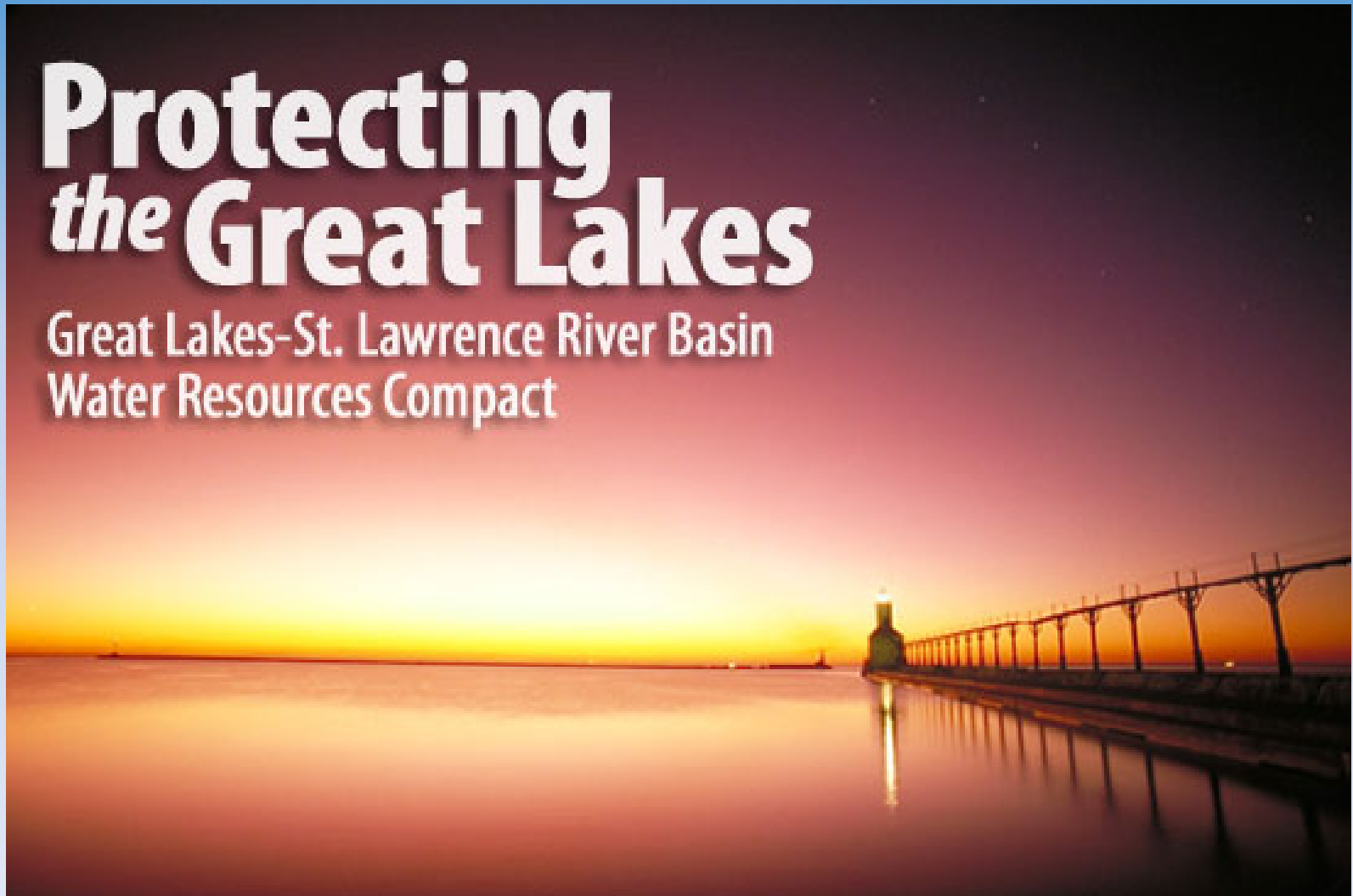
IDNR, Division of Water

Great Lakes Compact Webpage at:

<http://www.in.gov/dnr/water/5216.htm>

Protecting *the* Great Lakes

Great Lakes-St. Lawrence River Basin
Water Resources Compact



DNR DIVISION OF WATER

Water Rights & Use Section

Phone (317) 232-4160
Toll Free (877) 928-3755

Mark Basch
mbasch@dnr.in.gov

Monique Riggs
mriggs@dnr.in.gov

Allison Mann
almann@dnr.in.gov

