

DISTINGUISHED ALUMNI AWARD WINNER CRAIG JOHNSON

Craig's philosophy is: *"It is best to teach by example. Stay current, get out in the field, and work the profession. Bring back ideas to the classroom. Successful teaching is a combination of applied research, staying current, using solid people skills, and being passionate about your subject."*

Many students and associates would add an item to his philosophy: he was humble.

EXCEPT WHEN HE WAS TALKING ABOUT FISHING!

LandTEXTURE

Published by the MSU Landscape Architecture Alumni & Advisory Board for the Alumni and Friends of MSU Landscape Architecture
www.spdc.msu.edu

Winter 2016

Craig Johnson ('64)

2015 MSU Landscape Architecture Distinguished Alumni Award

Anthony Bauer

Craig graduated with a degree in landscape architecture from Michigan State University in 1964. In 1966, he earned a master's degree in LA from the University of Illinois with a specialized focus on surface mine reclamation. He began his career in education at Utah State University that same year, and went on to obtain a master's degree in Fisheries and Wildlife Biology in 1984 from South Dakota State University.

Few landscape architects have been as honored as Craig Johnson. He has achieved an incredible list of accomplishments and awards over his 42 years in the landscape architecture program at Utah State. Among them are 17 teaching awards, including the ASLA's highest, The Jot P. Carpenter Teaching Medal. Utah State's International Professor of the Year, USU College of Humanities Teacher of the Year, and many departmental Teacher of the Year awards were also bestowed on him over the years.

As a researcher, Craig focused on environmental planning and reclamation. He wrote numerous publications on the subject, and he received the Wildlife Society's Outstanding Book Award for "Conservation Corridor Planting at the Landscape Level: Managing for Wildlife Habitat."

Not satisfied just talking about or researching his subject areas, Craig has been committed to applying his knowledge. As an active practitioner in areas of environmental planning, land reclamation, and ecological studies, his numerous plans, designs, and reports received



2015 Distinguished Alumni Award Recipient Craig Johnson

high recognition. He has more than 10 national and local planning and design awards; here again, his commitment and accomplishments were exceptional.

A frequent comment from his students and colleagues was that they had "never met another person as effective as a professor in blending his teaching, research, and practice activities." Today, Craig and his wife Judy have retired to the lakes area of northwestern Minnesota, enjoying their passion for the outdoors.



DIRECTOR WITTER'S MESSAGE

SPDC Director Dr. Scott G. Witter

Dear Friends and Colleagues:

During this last year, we have experienced a number of exciting new opportunities and said goodbye to a long-term faculty member. Dr. Joanne Westphal started her career at MSU in 1995. She received her bachelor's degree in Biology from Wisconsin State University in 1970, a master's in Soil Science from the University of Wisconsin in 1973, a Ph.D. in Soils from the University of Wisconsin in 1977, a master's in Landscape Architecture in 1983, and a D.O. from Michigan State University in 1995. At heart, she has always been a landscape architect, who also became a practicing physician. She is a Fellow in both the American Society of Landscape Architects and the Council of Educators in Landscape Architecture. As a faculty member in SPDC, she focused on issues of health in the built environment, therapeutic site design, context-sensitive design, and research methodology. She touched the lives of a number of our students, and her contributions will be missed. We are in process of hiring a new tenure-stream faculty member to replace her position.

Dr. Pat Crawford was selected by Provost Youatt to bring together an administrative, teaching, and research agenda for MSU in Detroit. She is helping to create a coordinated program with five MSU colleges named DETxMSU: Summer of Hustle in June 2016. This program will grapple with the big urban challenges of today and tomorrow facing Detroit. Dr. Crawford and her students will be taking the World Class Built Environment (WCBE) approach to our section of DETxMSU. We will be starting on our fifth WCBE project this fall.

At the end of spring semester, we had a cross-section of the School's faculty present their teaching methods and how those changes have impacted our students. Presenter Karen Russcher showed and described student projects that demonstrated dramatic positive changes in the students' design and rendering skills.

Trish Machemer not only continues to do a great job as the LA Program Leader, but also has almost double the number of students who take her online ISS class. This work contributes significantly to

SPDC. She also has been working on a book with Dr. Burley and successfully co-taught the study abroad course with Dr. Crawford last year.

Jon Burley was an invited guest speaker at universities in China, Malaysia, Indonesia, and Japan during the last year. Jon's publishing and outreach in China continues to grow, attracting a number of Chinese scholars to come and work with him each year. He also served as a co-coordinator for an international conference sponsored by the World Scientific and Engineering Academy and Society (WSEAS) at MSU, where 100 papers were presented over three days in September. Our Landscape Architecture Alumni and Advisory Board (LAAAB) co-sponsored the LA portion of the conference, and LA faculty and students contributed presentations. The Board continues to do great things on the Program's behalf.

Paul Nieratko and LAAAB once again successfully planned the annual golf outing to raise almost \$2,500 in scholarship funds supporting our undergraduate LA students. Paul is

continued

Attendees enjoy Dr. Westphal's retirement dinner



currently working with Flint's Mott Park Neighborhood Association, the Glendale Hills Neighborhood Association, and representatives from Kettering University and the Flint Planning Department in his LA 344-Connections of Scale design studio. The studio is providing re-design concepts for the conversion of the 98-acre former Flint Mott Park Golf Course into a mixed-use active and passive park. He also planned the next LA Design and Graphics Workshop, which was held November 19-21, 2015.

Professor emeritus Warren Rauhe and Wayne Beyea continue to do great work in the field. This fall, their work on creating community Place Plans will receive a Diamond Award from the Michigan Society of Association Executives for their creativity and the impact of the plans.



Bob Ford, past LAAAB President, and Lubomir Dimitrov, Technical University of Sofia, display the hands of Michigan at the WSEAS conference



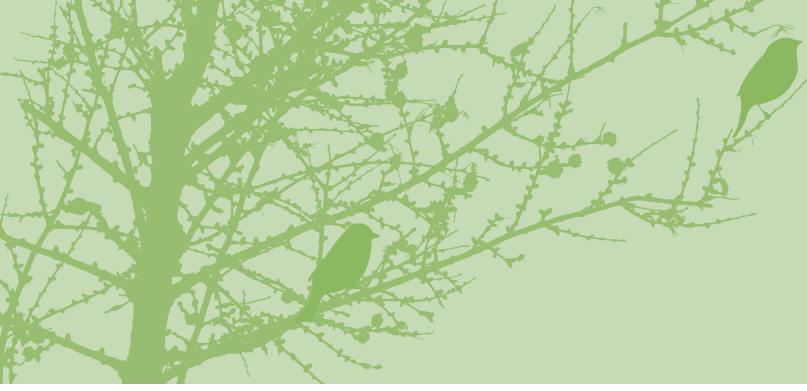
Paul Nieratko, Tony Bauer, and Duane Mezga present Dr. Westphal with a recognition plaque at her retirement dinner

Our faculty and students continue to do more great and exciting things than can be summarized in my note. Please enjoy the rest of the newsletter and learn more about what we do.

Thank you to all of you who continue to support our LA program and School!

Sincerely,
Dr. Scott G. Witter, Director





From Eye to Heart: **Exterior Spaces Explored and Explained**

Dr. Jon Burley

A preliminary edition of a new landscape history book authored by Dr. Jon Burley, FASLA, and Dr. Trisha Machemer has been released by Cognella Publishers (San Diego, CA). *From Eye to Heart: Exterior Spaces Explored and Explained* has been a massive undertaking of 18 months, 27 chapters, and over 500 pages in the first edition, which will be published later in the year. We decided to look for opportunities to produce our own book after realizing that none of the current textbooks contained the full content of the Integrated Social Science class, which is taken by students of many majors other than landscape architecture. The approach to the course takes a cultural environmental design perspective, whereas other MSU social science professors teach other sections of the course from a cultural geography or cultural anthropology perspective. For some landscape architecture students, it may be the only history class they take. In addition to exercises for students to study and learn about landscape, the class weaves in architecture, city planning, construction and materials technology, environmental science, environmental psychology, cultural geography, anthropology, painting, and sculpture.

The cost of copyright images supplied by others can discourage publishers from producing history books. However, the vast collection of our own photographs and drawings from around the world

meant they did not need to rely upon images supplied by others. The substantial cost savings realized by the use of around 500 of our own images helped support the publisher's interest



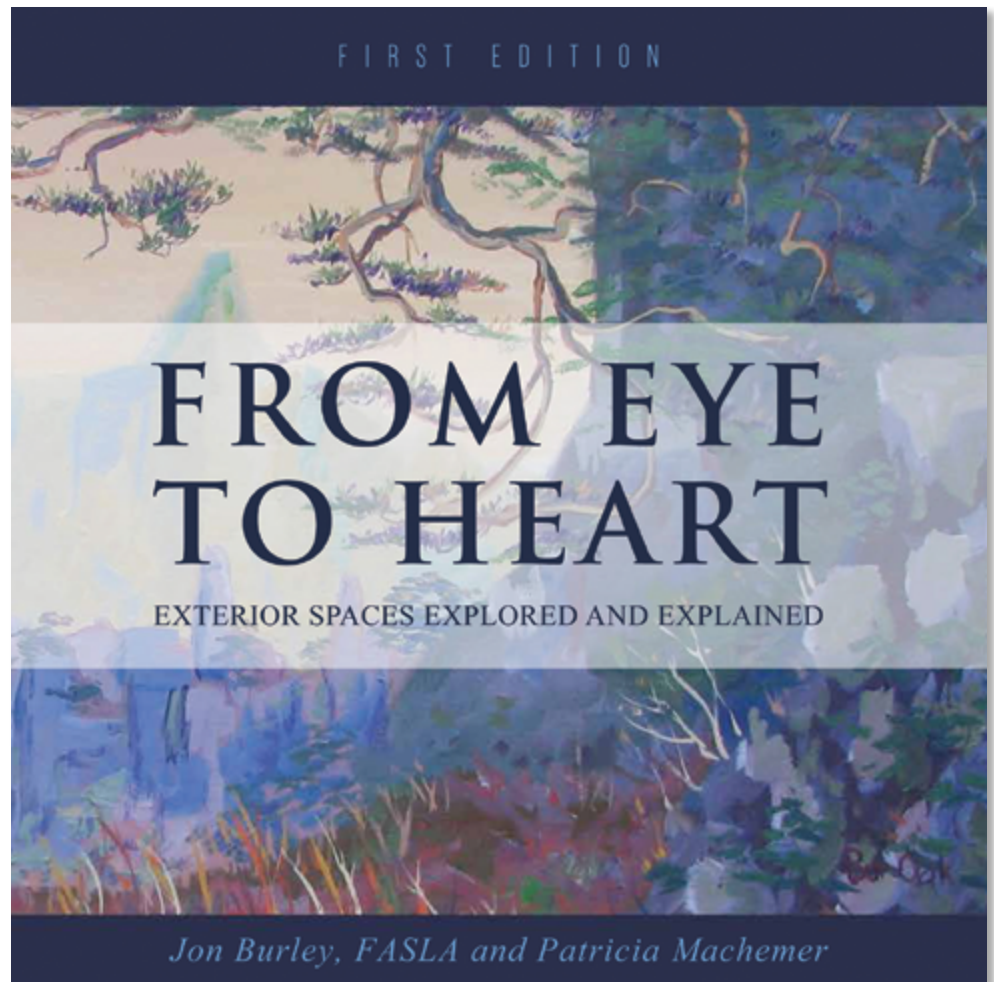
A drawing by Dr. Burley of the Blue Mosque in Istanbul, Turkey (copyright © 2006 Jon Bryan Burley, all rights reserved, used by permission).

We decided to look for opportunities to produce our own book after realizing that none of the current textbooks contained the full content of the Integrated Social Science class, which is taken by students of many majors other than landscape architecture.

in the book. It has taken 40 years to travel to most places of importance and compile enough materials for such a book, including a recent visit to Kyoto, Japan this last spring. Students seem to really appreciate the first-hand perspective on many of the places discussed in the book, and we hope that the information in the book and lectures, which is often not mentioned in other texts, brings informed insight to the students' learning experience.

Much of the book is written in an unusual style: first person. In the interest of avoiding a standard, dry textbook discourse, personal views, opinions, and ideas are offered about architecture, art, cities, and other subjects. The landscape perspective may occasionally be surprising, as in the case of the assessment of some projects by Mies van de Rohe and Le Corbusier as "not so good." On a personal note, I might add that if you have written a book, you have the right to criticize us, but if not, wait until your book is published first. I learned that from Mike Lin, who would not have people criticize his or his student's drawings—make your drawing first, then you can criticize.

Even though the book is over 500 pages, Dr. Machemer and I both know that much



Cover for From Eye to Heart: Exterior Spaces Explored and Explained containing a painting by Dr. Burley of Huang Shan (Yellow Mountain), China (copyright © 2007 Jon Bryan Burley, all rights reserved, used by permission).

has been left out and we are already considering a second edition—after a breather from the 80-hour weeks required to make this publication happen! As I am in the book writing phase of my career, there may be more on the way after that. I have several more textbook topics I would like to explore before I retire or die on the job. These topics include research methods for landscape architecture investigation, qualitative wildlife planning

and design, technical planting design, quantitative visual quality, an update to Albe Munson's book on landscape construction, and landscape architecture teaching methods. Several people have suggested I write about my 200 paintings and 1,100 drawings from around the world, but I would prefer to have more purpose or detailed explanation before publishing books about my own art.



2015 Scholarship Fundraiser



Golfers register for the 2015 student scholarship fundraiser

Steve Troost

The 2015 Landscape Architecture Alumni Golf Outing will provide nearly \$2,500 for undergraduate student scholarships. While participation and fundraising was down from previous years, the 32 players who did turn out at the Hawk Hollow Golf Course had a wonderful day of golf and camaraderie! The winning foursome included Nick Bockerstette, Brian Voelz, Drew Jackson, and Donald Stefanko at 18 strokes under par. This year also featured the youngest participant in Jennings Burley, who amazingly won the longest drive for 5 year old boys on the second hole! Rumor has it, he out drove Paul Nieratko!!!

All kidding aside, a note of thanks goes out to Paul Nieratko and the LA Club for their volunteerism and leadership. Mark your calendar NOW for the 2016 outing on September 16 at the Eagle Eye Golf Club in Bath, Michigan.

If you missed this opportunity to contribute to the program and its world-class academic endeavors, it's never too late. Please consider contributing today! Big or small, every bit of financial support is needed to help make the program, as stated by the LAAAB President Deb Cooper, the VERY BEST OF THE BEST!

If you missed this opportunity to contribute to the program and its world-class academic endeavors, it's never too late. Please consider contributing today! Visit www.spdc.msu.edu for giving information.

Congratulations to the following individuals for demonstrating their amazing skills on the course:

Men's Longest Drive:
Brock Downs.

Senior Men's Longest Drive:
Morrie Hoevel.

Women's Longest Drive:
Sue Hopper.

5 Year Old Longest Drive:
Jennings Burley.

Men's Closest to the Pin:
Drew Jackson.

Women's Closest to the Pin:
Katie Barry.

Longest Putt:
Matt Hull.

EVENT SPONSORS:

Women's Longest Drive:
Steve and Beth Troost
Williamston, MI.

Longest Putt:
Landscape Forms, Inc.
Kalamazoo, MI.

Student Players:
Bob Chipman
Austin, TX.

Scoreboard:
**Kenneth Weikel and
Beth Hagenbuch**
Farmington, MI.

Cash Donations:
SmithGroupJJR, Inc.

Tee Sponsors:

Landscape Forms, Inc.,
Kalamazoo, MI
Dr. Jon B. Burley, Rainbow Lake, MI
William J. Briggs, San Diego, CA
Maureen and Paul Nieratko,
Bath, MI
Garden Works, Troy, MI
Eagle Eye Golf Club, Bath, MI

**MSU Student Chapter ASLA/LA Club
The Naturalist**, Troy, MI
Beckett & Raeder, Inc., Ann Arbor, MI
Bill Pierce, Haslett, MI
Danny Bulemore and Josh Seyfried,
Class of 2009
CW Golf Architecture, Saline, MI



Hello from LA Club 2015-16!
It's time again to introduce
our new Officers and
Committee Chairs!

President: **Katie Ling** (5th Year)
Vice President: **Maleah Beatty** (5th Year)
Treasurer: **Marlena Smith** (5th Year)
Secretary/Social Co-Chairs:
Morgan Haffey (4th Year) and
Brock Downs (4th Year)
Fundraising Chair:
Arianna Zannetti (3rd Year)

Volunteering Chair:
Cresha Wee (4th Year)
Alumni Liaison: **Mike Hou** (4th Year)
4th Year Rep: **Nick Blok**
3rd Year Reps: **Curtis Schaldach** and
Brad Hornburg
2nd Year Rep: **Abbie Reimel**

LA Club 2015-2016

Katie Ling

LA Club got off to a great start this year with officer's meetings scheduled regularly on the 2nd Sunday of each month, closely followed by LA Club meetings on the 2nd Monday of each month. At the first LA Club meeting, landscape architecture and engineering majors were represented and attendance soared with over 30 students present. A few Landscape Architecture Alumni and Advisory Board (LAAAB) members (Deb Cooper, Bob Ford, and Steve Troost) and LA Club officers met at Beggar's Banquet to get acquainted and discuss the direction of the LA Club over the next year.

Already, LA Club and Faculty have put together successful fundraisers and events. We had this year's first Alumni + Student Tailgate, which was well-attended by students and alumni despite rain and chilly weather. Students and Alumni brought food and beverages (so much!), networked, and played outdoor games. Then we beat Air Force. The Tailgate was followed by the Distinguished Speaker Series with Roger Trancik that Sunday evening, and a conversation between Roger and students over lunch on Monday. At LAAAB's bi-annual meeting, LA Club presented new ideas for an Alumni-to-Student Mentorship Program. That program is presently in the works; anyone interested in a full- or half-day student job shadow is welcome to contact Mike Hou at houxiao@msu.edu. Also, please contact Mike Hou if you would like to support the LA Club by purchasing a 2016 calendar for \$15.

The MSU Alumni Golf Outing + Fundraiser at Hawk Hollow was a success, as was the T-Sign Making event a few days prior. The LA Club's New Fall Opener for new students and present members, organized by the Social Events Committee, had great attendance. It is followed this month by an informal Dinner and Mixer for all LA students. All 5th year students, as well as



Jon Burley presents Alumnus Roger Trancik with the 2016 Distinguished Alumni Award

several younger members of LA Club including officers and class representatives, attended the MiASLA Jens Jensen Presentation and/or the Meeting in Ann Arbor + Ypsilanti, and a few students attended the ASLA Annual Meeting + Expo in Chicago in early November. Also in November, LA Club will be participating in a volunteer event, and hopes to end this year with a holiday party in December the week before finals.

So what's next for 2016? A Stress-Free Event for all students of SPDC Student Organizations will take place the evening of the SPDC Hayride. We saw Bill Johnson and Bob Chipman at the Big Ten Biennial Workshop and Design Charrette on November 19-21. Last year, SPDC held a Career Fair for LA Students of all years which was heavily attended by students and firms. The Fair was followed by a Distinguished Speaker Series the same day and Interviews the day after. Students loved the career fair so much they requested the same format this year, and LA Club has decided to create a professional event preceding the Career Fair, maybe in late January. A speaker panel of three LA professionals will give students advice and suggestions about what to put in a portfolio, and will offer suggestions to younger students who may not yet have enough work to put in a portfolio.

More events are being scheduled at every meeting, so if you'd like to be included in LA Club's Google Event Calendar, e-mail Katie Ling at lingkati@msu.edu. Thanks, and see you all soon!

MSU is a major
world class
university.



World Scientific and Engineering Academy and Society Meeting Hosted by MSU

Dr. Jon Bryan Burley, FASLA

Nearly one hundred academic papers were presented at MSU during the World Scientific and Engineering Academy and Society (WSEAS) Meeting in September 2015, featuring speakers from Algeria, Turkey, S. Africa, Portugal, Japan, Malaysia, Italy, and the USA. At the meeting, Roger Trancik, FASLA, Professor Emeritus from Cornell and MSU graduate, was a featured plenary speaker and received the 2016 Distinguished Alumni Award. In addition, the event included the 7th International Conference on Landscape Architecture. Dr. Luis Loures, a landscape architect from Portugal and frequent visitor to MSU, was also a plenary speaker and participated in the landscape architecture portion of the conference.

Members of the Landscape Architecture Alumni and Advisory Board (LAAAB) attended the meeting and banquet, and the Board held its fall meeting during the conference. A post-conference trip to Chicago gave WSEAS members and landscape architecture students the opportunity to interact and see the planning and design sights of Chicago.

I was really pleased with the cooperation and gracious attitude of LAAAB members. The members helped to fill seats during the

presentations, making international guests feel welcomed and appreciated. Practitioners rarely get an opportunity to observe first-hand one of the driving forces in academia, as practitioners often only focus upon teaching and producing the next generation of landscape architects. But in academia, building and constructing new knowledge plus publishing in academic outlets is vital to the university's reputation and standing. Rating and ranking a university's standing is not heavily based upon teaching, which is difficult to measure, but upon the number of grants received and the new knowledge that is produced. MSU is a major world class university. Our landscape graduate students work diligently to explore ideas and contribute to planning and design knowledge in such areas a rooftop gardens, surface mining, water quality, visual quality, recreation, housing, transportation, wildlife habitat, and urban design. Research topics can be somewhat deep and highly specialized, making the presentations a bit obscure, and the practicality of the research may not be fully realized or appreciated for years or even decades. For example, the great Stanly White, a noted Illinois landscape architecture professor, developed green walls in the 1930s. He never lived to see how this idea has become popular and widespread. It is the tragedy of academics that they often do not live to see their ideas become a reality because it takes time for those ideas to be appreciated and adopted by the planning and design community. It is just like the paintings of Van Gogh: he only sold one in his lifetime, to his brother, and died not knowing he would become one of the greatest painters in the world. The value of some research is not always easy to estimate. Sometimes research that is quickly acclaimed becomes nothing, and something that is of great value takes time to be appreciated. I try not to judge the work of other researchers too much.

Compared to many great institutions of learning, our small group of landscape faculty and students produce many more scholarly works than places with 20 or more faculty. I am very proud of my colleagues and MSU students. Thanks to everyone who made the meeting a success.



Dr. Azami Zaharim presents as a keynote speaker at the WSEAS conference

2015 LAAAB BOARD

Executive Committee:

Deborah Cooper, President
Patrick O'Leary, Vice President
Stephen Troost, Secretary
Pamela Blough, Treasurer
Robert Ford, Past President

Board Members:

Kent Anderson Scott Reinholt
John Campbell Monica Schwanitz
Robert Chipman Kenneth Weikal
Michael Dul David Yocca
Donald Fox
Michael Rein

Teaching Faculty:

Jon Burley
Pat Crawford
Trisha Machemer
Paul Nieratko
Karen Russcher

Teaching Instructors:

Pamela Blough
Vanessa Warren

President's Message 2015

Deb Cooper

The MSU Landscape Architecture Alumni and Advisory Board (LAAAB) has had a great year! Since our last Newsletter, we have continued to make advances in connecting with our MSU LA alumni, engaging with the BLA and MED Students, and working in tandem with faculty and staff to help them make this *The Best of the Best* Landscape Architecture program.

As you undoubtedly have seen on national advertising, MSU has a slogan:

WHO WILL? SPARTANS WILL! Who can we depend on to tackle the big problems of our time? Push the boundaries of discovery and forge partnerships that lead to better answers? Who will work for the common good with uncommon will? *SPARTANS WILL!*

Does this strike a chord with you as a Landscape Architect? I can't find better words to describe the role we play every day as Landscape Architects working with communities, corporations, park systems, educational institutions, and many others



Current LAAAB President Deb Cooper

in creating better places for humanity. It is hard work and we encounter many road blocks, be it old standards, politics, funding, or any number of other challenges. But Landscape Architects

are trained to assess those challenges and find solutions to overcome the hurdles that stand in the way of making a difference. So who will? *SPARTAN LANDSCAPE ARCHITECTS WILL!*

As Board members, we are challenging ourselves to make the LA program within the School of Planning Design and Construction not just ordinary, but extraordinary. We are focusing our efforts on providing our students with experiences that go beyond those offered at other schools around the world. We see the Alumni as a significant partner in accomplishing this goal, and we encourage all of you to stay (or get) connected and to participate in any way that you are comfortable. There are many opportunities to make a difference in our Landscape Architecture students' experience!

Here are some of our accomplishments to date. If you see something that interests you, please contact any of the board members listed above.

One of the first programs we initiated after forming our board in 2011 was a Distinguished Speaker Series. The series fulfills two goals: first, to provide the students the opportunity to hear first hand from the leaders in our profession; and second, to engage fellow alumni with our students. Twice a year, we arrange for national and international speakers to engage our students and alumni in provocative discussion. Many of our speakers have eagerly participated with

We are focusing our efforts on providing our students with experiences that go beyond those offered at other schools around the world.

Who will work for the common good with uncommon will? SPARTANS WILL!

President's Message 2015

(continued)

the students the following day in project critiques, design charrettes, and other informal sessions. To date, we have hosted seven distinguished speakers, with some events expanding to several days of conference/symposium relevant to global issues. This past fall we combined our speaker with the international World Scientific and Engineering Academy and Society (WSEAS) conference hosted on MSU's campus.

The second initiative was to produce an annual newsletter for our alumni to showcase our students, the program, and alumni achievements. What better way to get the word out and inspire others to get involved than to reconnect? It has been a bigger challenge than originally anticipated to find all of you. As many of us graduated well before the digital age, we found many of the addresses from class lists were incorrect, and we are currently working to expand and update that data base. This is our fourth newsletter, and the mailing list/email list is growing as we rediscover our alumni across the globe. If you know of alumni who did not receive this newsletter, first pass it on and second ask them to get us their current information. We hope to ultimately transmit digitally as a commitment to green initiatives, but at this time many of our older alumni do not have email addresses.

A third initiative is to engage with the LA Club to offer as much support as possible in training our future leaders of Landscape Architecture firms and academic programs. We meet with the



Human Ecology, home of SPDC and the Landscape Architecture program

incoming officers before the start of fall semester to foster an easy relationship between students and the board. At our biannual meetings, we invite the LA Club to speak with us and encourage discussion about events they have planned, how we can assist, and how we might help them fund some of their efforts. Current LA Club President Katie Ling has begun a calendar that we can all access so we can coordinate activities with class deadlines and other events.

Some other initiatives we have been working on in tandem with faculty and staff include: vertical studios (projects involving students at all levels), induction of the third year students by the fourth year students, an alumni survey (which you may have received or may be receiving soon), a mentoring and internship program, obtaining continuing education credits for our

practicing alumni who participate in the speakers series, and working with MSU Development to gain an understanding of how we can best participate in securing funds to make the MSU Landscape Architecture program the VERY BEST OF THE BEST, and sustaining landscape architecture forever at MSU.

I hope you enjoy reading our newsletter, and if you see something you would like to get involved in or help fund, please don't hesitate to reach out.

To a year filled with opportunities! Enjoy!
GO GREEN!

Deborah (McCue) Cooper, Class of 1976
President, MSU LAAAB
Principal, Beckett & Raeder, Inc.
coop@bria2.com



Belle Isle, Detroit, Michigan

Program Updates

Trish Machermer

In the fall of 2014, the MSU Landscape Architecture Alumni and Advisory Board (LAAAB) and LA program worked in collaboration with the Belle Isle Conservancy and the Michigan Department of Natural Resources (Dan Lord, MSU LA alumnus) to host two events celebrating Belle Isle and the work of Frederick Law Olmsted. Dr. Ethan Carr, FASLA, a renowned Olmsted scholar from the University of Massachusetts Amherst, presented lectures in East Lansing and at the historic boathouse on Belle Isle. MSU LA students and alumni also participated in a discussion about the Belle Isle Master Plan, generously given by Angela Hicks (MSU LA alumna) of Hamilton Anderson, and a tour of Palmer Park. Thanks to John Campbell for all of his hard work and persistence in pulling off this event.

Over a dozen firms attended the 2015 Career Fair held in February. Thanks to all of those who attended and provided the students with career insight and advice: Antonelli Landscape, Bauer-Ford Reclamation, Beckett & Raeder, Inc., PM Blough, Conservation Design Forum, Michael Dul & Associates, English Gardens, EDSA, City of East Lansing, Hitchcock Design Group, Hughes, Good, O'Leary and Ryan, Albert Kahn Collaborative, Mariani Landscape, Murphy and Associates, Premiere Services, SmithGroup JJR, TBG, and Three C's Landscaping. We will hold the same open house format in February 2016. Please contact Trish Machermer (machermer@msu.edu) if you or your firm would like to participate.

On February 12, Craig Johnson ('64) was on campus to accept the 2015 Distinguished Alumni Award and to discuss the planning and design of landscapes for wildlife as part of the ongoing Distinguished Speaker Series. For over four decades, Craig has enriched the educational experiences of students and professionals in wildlife planning, design, and restoration. His numerous awards in teaching and practice are a testament to his dedication and passion in landscape design, both locally and

nationally. Craig generously met with LA and planning students in a seminar format to share his insight and provide a valuable learning experience.

Congratulations to the spring scholarship recipients. Ben Friman and Abigail Reimel (current second years), Arianna Zannetti (current third year), and Ellen Daniels, Travis Frangie, and Emily Prieskorn (current fifth years) all received LA Endowment awards. Jacob Weiss (current third year) was awarded the Polakowski Scholarship. Maleah Beatty received the Moore Scholarship for 2015-16. Fifth year student Katie Ling received the Hamilton Anderson award. And Nick Block was awarded the Knostman Scholarship. The MSU LA program is very fortunate to have such endowments. They are immensely valuable to the students, permitting them to be the best students and citizen landscape architects that they can be. The John Campbell Scholarship is funding Ph.D student Barb Firman along with master's students Maleah Beatty, Katie Ling, Emily Prieskorn, Ian Dippo, and Ellen Daniels.

On January 2, 2015, a rising LA star was lost. Maura Brandi was a sophomore in the LA program when she died in a fatal car accident. Maura loved to learn and LA at MSU was the perfect fit. She thrived on the interdisciplinary emphasis, combining her creative talents, intellectuality, and problem solving abilities. She excelled academically and generously assisted her classmates. LA would empower her to achieve her dream to preserve water systems and make the world a more beautiful place. In summer of 2014, Maura interned with Site Planning Development, Inc., in Charlevoix, MI. John Campbell of Site Planning has set up a memorial scholarship fund to continue Maura's exceptional legacy. For information on how to contribute to the fund, contact John Campbell at jwc@siteplanning.com or the Charlevoix County Community Foundation at www.c3f.org.

One of MSU's oldest alumni Dr. Clare A. Gunn passed away on November 19, 2015. Dr. Gunn's career began at Michigan State University with a BS in Landscape Architecture in 1940, MS degree at MSU in Land and Water Conservation in 1952, followed by a Ph.D. in Landscape Architecture at the University of Michigan in 1965: the first in the nation. His 21 years of extension work at MSU introduced him to the field of tourism, providing the focus of his work in research, teaching, writing, and consulting for seven decades. He received the Outstanding Alumni award in 1999.

117th Year MSU Landscape Architecture All Class Reunion

May 15-17, 2015

Old Mission Peninsula
Traverse City, Michigan

Jo Westphal

In an attempt to set a Guinness World Record for Class Reunions, Professor Emeritus Dr. Jo Westphal invited all of the Classes from the Landscape Architecture Program at Michigan State University to gather at Old Mission Peninsula for three days last spring. Since we are the oldest undergraduate program in the country, we thought we were a shoo-in for the record. Over 110 graduates, faculty, and friends attended the event. And even though we did not set a record for attendance, it appears that everyone had a great time telling stories and exaggerating past exploits on (and off) the MSU campus. For those of you who missed the event, the itinerary is listed below.

May 15, 2015

The event kicked off with six sessions of interviews in the nationally acclaimed StoryCorps format. Alumni were encouraged to find a fellow MSU Landscape Architecture classmate, professor, friend, or associate and engage them in a 40 minute taping session on the life and/or times of being a Spartan. StoryCorps is a professional, non-profit organization affiliated with National Public Radio that travels across the U.S. to record the lives of ordinary Americans; these oral history sessions are then edited and stored in the National Archives in



Washington DC. Three Landscape Architecture firms, the MSU Alumni Association, and the Joanne Westphal Endowment sponsored the event, which involved 17 interviews over the three-day weekend.

Friday evening found alumni, faculty, friends, and associates sharing substance (i.e., food) and stories with one another about the MSU Landscape Architecture experience. In essence,

Continued on next page.



Old Mission point lighthouse in Old mission peninsula, Traverse City, Michigan

Everyone had a great time telling stories and exaggerating past exploits on (and off) the MSU campus.

All Class Reunion (continued)

the alumni became “the Old Timers” as they relived their years at MSU...needless to say, everyone brought stories and/or exaggerated tales. Professors Duane Mezga and Vanessa Warren ('01) hosted the event as each class by year was “mustered” in with a microphone after a photograph of the class was taken.

To see who was there from your class, go to this website: <http://justahobby.phanfare.com/DrJoRetirement>. Members of the Class of 2018 videotaped the whole event, and edited CDs of this event and the retirement banquet can be obtained from Dr. Jo for a small fee. Copies of the CD will be placed in the MSU Archive on-campus, under the title of Landscape Architecture Program.

May 16, 2015

A *Design Charrette* was held at St Joseph’s Church Hall on the Old Mission Peninsula to help the parish create an appropriately picturesque setting for a beautiful, newly remodeled old church. Lori Mullins ('97) and Professor Paul Nieratko led the event. Other alumni opted for time in the *Great Outdoor/Indoors*. This venue was designed to allow guests to create their own “Up-North” experience with classmates or friends. Activity locations included Sleeping Bear Dunes National Lakeshore, the TART

bicycle trail, kayaking or canoeing any of the many lakes or rivers in the area, golfing, and wine touring. A *Spartan Sagas* session and lectures on the architecture of the Old Mission Peninsula (Professor Jo Westphal, LA) and the geology of the Grand Traverse Region (Professor Dave Lusch, Geography) were attended by about 19 alumni and friends interested in creating their own “do-it-yourself” field tours of the region. A *Green Roof Workshop* was conducted by LA alumni Erik Cronk ('08), Jeremy Monsma ('09), and Kevin Krogulecki ('09) as they roofed a small structure at Dr. Jo’s LA Alumni Farm, 3688 Bluewater Road, Traverse City, MI. In the evening, over 90 individuals attended the Retirement Party & Roast for Dr. Jo at the Hagerty Center in Traverse City, MI. Masters of Ceremony (or mischief!) were Professors Tony Bauer, Duane Mezga, and Paul Nieratko, who invited members of the audience to come forward and tell tales about Dr. Jo. Former students, fellow faculty, and family members shared their experiences with Dr. Jo, revealing her many facets, talents, passions, and eccentricities. The evening closed with Dr. Jo giving her impressions of university teaching using Larsen cartoons and a created storyline. This PowerPoint is available by contacting Dr. Jo at westphal@msu.edu. Six StoryCorps sessions were recorded on Saturday.

May 17, 2015

The last five StoryCorps sessions were held at St. Joseph Catholic Church, 12675 Center Road (M-37), Traverse City, MI. These sessions, along with the twelve earlier sessions, were edited and cataloged in the Library of Congress as a part of the American Folklife Program. Most alumni gathered their belongings (almost 50 people camped at the LA Alumni Farm) by late afternoon and began their journeys home with smiles on their face and a renewed commitment to their alma mater. In that respect, this was an important weekend for recognizing the legacy of the MSU Landscape Architecture Program. Dr. Jo has always believed that oral history is an important way to acknowledge the many people who were a part of the LA undergraduate experience at MSU; for this reason, she was glad to organize this amazingly rich and enjoyable event. It’s hoped that others will organize similar events in the future—who knows, maybe a Guinness World Record is in the offing! As always, go GREEN!



Montserrat, Spain, Photo by Nick Blok

MSU Landscape Architecture **Study Abroad 2015**

Brock Downs

Malaga, Spain

Starting at the southern tip of Spain, our class of 12 students first met in the coastal city of Malaga. Known for its Moorish historical roots, Malaga proved itself a fitting gateway for the coming events of our long journey ahead. One of our first experiences as a group was climbing the hillside gardens of the city's Alcazaba, which claims its origins as far back as the 11th century. At the peak of our hike, we found ourselves within the walls of the equally impressive Gibralfaro Castle, providing us with our first of many breathtaking views. Perhaps the most interesting feature of all, however, was the city's interactive waterfront, Muelle Uno. Featuring top of the line shopping and dining options, this promenade along the harbor connects a modern coastline to a historically ancient city, which prompted us to think very differently about design and its associated context.

Seville, Spain

After two days in Malaga, it was time to move on to Seville, where ancient Mudejar traditions are fused together with a lively, urban streetscape to create a stunningly diverse environment throughout the city. This is also where we began our overseas curriculum led by Dr. Pat Crawford, which consisted of three core classes: Design Development, Field Studies, and Drawing as Knowing. Historically speaking, the Alcázar de Sevilla and Plaza de España are the prominent landmarks of the area. Fittingly enough, our first field study challenged us to compare and contrast the two sites, with quick sketches to reinforce our findings. On the opposite end of the spectrum, we were able to also visit the world's largest wooden structure, the Metropol Parasol, which is widely accepted as one of the finest examples of contemporary architecture today.



Alcázar de Sevilla, Seville, Spain, Photo by Brock Downs

Continued on next page.

For those considering study abroad in the future:
Absolutely do it. It is an experience that you will
certainly remember for the rest of your life.



Metropol Parasol in Seville, Spain, Photo by Dr. Pat Crawford

Study Abroad *(continued)*

Granada, Spain

Transitioning to the more rural Granada, our area of study was focused on what many consider to be the most beautiful and well-preserved castle in all of Spain: la Alhambra. Planned as a two-day visit, we had the opportunity to explore all 26 acres of the acclaimed “city within a city.” Built in the 11th century by the Nasrid Dynasty, its original Moorish elements have transformed as power has shifted hands over time. The evolution of this change is readily seen through the major areas of the fortress: the Generalife Gardens, the Three Palaces, and the Alcazaba. Outside of Alhambra, the city itself remains true to authentic Spanish form, with cobblestone walkways alongside endless local shops and cafés.

Barcelona, Spain

Continuing with Dr. Crawford, our last stop in Spain was Barcelona, where we spent much of our time exploring the countless works of the world-renowned Catalan architect, Antoni Gaudí. Whether it was Casa Milà or Park Güell, or even his final project at la Sagrada Família, Gaudí’s attention to detail in each of his designs never ceased to amaze us all. While many of his most famous works lie north of the city’s center, his earliest works can be seen along the southern boulevard to the sea, la Rambla. As the focus of our second field study, la Rambla stretches about a mile long from Plaça de Catalunya to Port Vell and is widely considered to be Barcelona’s cultural core, with local food markets, souvenir vendors and street entertainers scattered throughout. On our final day, we traveled by train to the foot of Montserrat, which is a multi-peaked mountain located about an hour northwest of Barcelona. In order to reach the peak, we traveled by a combination of cable car and funicular

railway to the top. Distinct from the many sites on our trip, hiking Montserrat was unique in that it was our first true opportunity to enjoy entirely natural beauty, and it most certainly did not disappoint.

Rome, Italy

Following our journey through Spain, we then traveled by train to Italy, where we spent our first few days off in Oulx and Florence on our own. Beginning at the start of Holy Week, our group met with Dr. Patricia Machemer in Rome, resuming our programming once again. Situated in the Trastevere district, we were within walking distance of the center of the city, which allowed us more time to see the many wonders the Italian capital has to offer. Before exploring Rome’s more central attractions, we first took a day to study the picturesque gardens at Villa d’Este. As the site of our third field study, this 16th century Renaissance gem encompasses a seemingly infinite number of fountains, grottoes, and



Villa d’Este in Tivoli, Italy, Photo by Nick Blok

Eiffel Tower in Paris, France, Photo by Yanzhi Xu



Study Abroad (continued)

pools, with each element having its own uniquely hidden meaning. Heading back into central Rome, the ensuing days featured all of the classic Italian marvels: the Colosseum, the Trevi Fountain, the Pantheon, the Roman Forum and the Spanish Steps. While some of us were able to visit St. Peter’s Square toward the end of the week, entrance into the Basilica was near impossible due to the large number of visitors during Holy Week. Aside from visiting the many sites, much of our down time was spent enjoying the incredible food surrounding our hostel. Whether it was their world famous pizza or endless scoops of gelato, Campo de Fiori was our go-to destination to satisfy the indulgences.

Paris, France

From one beautiful city to the next, our group moved on to Paris, where we began with a day trip to one of the

most famous gardens in the world at the Château de Versailles. Setting the standard for French formal gardens, Versailles demonstrates near perfect symmetry on both sides of its strong, central axis. This design scheme is carried out throughout the city as well, known as the Axe Historique or Historic Axis of Paris. Our fourth field study challenged us



Paris, France, Photo by Mike Hou

to investigate the nearly five mile stretch, which runs through some of Paris’ most celebrated monuments and squares. Built along the Avenue des Champs-Élysées from Le Louvre to the Arc de Triomphe, the city’s historic axis has remained intact since the 17th century. More recently, the historic axis has since been extended westward to the city’s isolated business district, La Défense, which features a modern rendition of the Arc de Triomphe, named La Grande Arche. While many of Paris’ famed monuments reside along the historic axis, the most famous of them all, la Tour Eiffel, lies just to the south. As a class, we had the opportunity to scale the Iron Lady by day and view its golden illumination by night. Known for its vast array of

irresistible desserts, Paris makes a good case for the title of best food on our trip, with crepes, croissants, and their world-famous macarons to name only a few.

London, United Kingdom

Travelling through the Chunnel into England, our next couple of weeks were spent in the iconic city of London. With five weeks abroad already on the books, London was great in the sense that it provided a little taste of home for many of us. Perhaps a distant cousin to American cultural norms, the English way of life created a comforting environment in which to learn and explore its depths. Our first day featured a visit to St. Paul’s Cathedral and the adjacent Millennium Footbridge. From there, we walked south along the River Thames to see Big Ben

Continued on next page.



Oulx, Italy, Photo by Cole Mauti



London, England, Photo by Dr. Pat Crawford



Salisbury Cathedral in Salisbury, England,
Photo by Dr. Pat Crawford

Study Abroad (continued)

and the Palace of Westminster, which is home to the House of Commons and Lords of the United Kingdom. Our day then concluded at one of London's cultural centerpieces, Trafalgar Square, where many of their most popular community events take place each year. Next, a trip to the shopping districts of Camden Town and Covent Garden ensued. With one area boasting a more modern, upscale appeal and the other catering to a more local flavor, the two spaces ultimately function as one array of options for all types of visitors. Early the following morning, we embarked on a two-day journey to the town of Salisbury and travelled by bus to Stonehenge. The long walk from the visitor's center to the sacred site was well worth the effort, as these 5,000-year-old stones were incredible to see in person. From there, we made our way back to visit Salisbury Cathedral, which is one of the finest examples of Early Gothic architecture in existence today and home to the best preserved copies of the Magna Carta. With so many beautiful places to explore scattered throughout England, travelling long journeys by train was commonplace, as we took day trips to study Stourhead, Blenheim Palace, & Alnwick Gardens. Our final field studies were concentrated on two widely contrasting topics: the dynamics of Hyde Park and the presence

of contemporary architecture throughout London. Originally created as a hunting ground in 1536 by Henry VIII, Hyde Park is made up of more than 600 acres of public green space, with the Serpentine Lake as its social centerpiece. Contemporary architecture, on the other hand, has become an integral part of London's aesthetic identity over the years. From the Gherkin to City Hall, over to the Shard, and on to King's Cross Station, London's continual fusion of old with the new is undoubtedly among the best in the world.

Tallinn, Estonia

After a short plane ride from London to Tallinn, the reality had finally set in: Our trip was nearly complete. Seven blazing fast weeks spent exploring some of Europe's grandest wonders had already gone by, and Estonia may have been the most surprising destination of our entire journey. Unlike the more distinguishable cultures of Spain or France, our perception of Estonian culture was untainted. We really had no idea what to expect. Starting in Tallin and moving on to Tartu, we had the opportunity to meet several students in Landscape Architecture at the city's university. With Estonian independence from Soviet



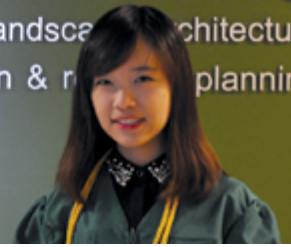
Blenheim Gardens in Woodstock, England, Photo by Brock Downs

Russia occurring in 1991, the fresh sense of cultural pride was profound throughout the country. After getting familiarized with its major cities and accompanying cultural norms, we travelled as a group to the small town of Sillamae, located just a few miles from the Russian border. Our three-day charrette focused in on the existing waterfront of the town and challenged us to come up with innovative solutions to solve its barriers to accessibility. Our final day concluded with a beautiful sunset over the Baltic Sea. In many ways, Estonia reminded us all of home, which made it a fitting end to this incredibly life-changing journey.

For those considering study abroad in the future: Absolutely do it. It is an experience that you will certainly remember for the rest of your life.



Sillamae, Estonia, Photo by Dr. Pat Crawford



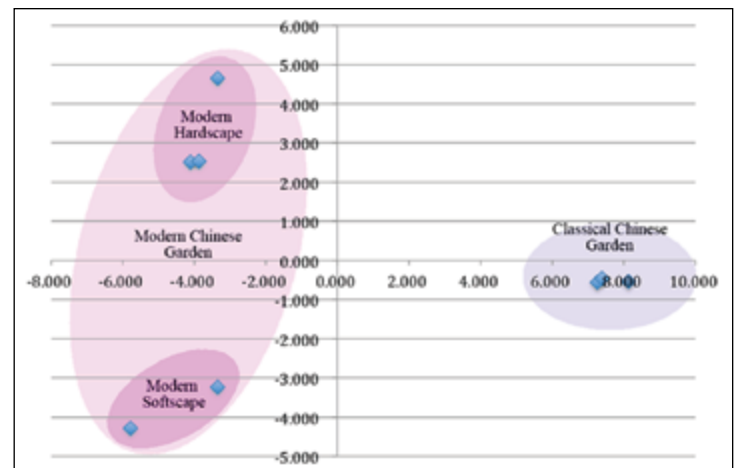
Chinese Gardens: an Ordination

Yiwen Xu

Garden designers and scholars are interested in the differences and similarities between traditional design and modern designs. My master's thesis examines the similarities and differences of classical and modern Chinese gardens. The comparison is accomplished by ordinating the design elements and basic principles for each garden. Three classical Chinese gardens in Suzhou, China and five modern gardens in Xiamen, China were selected to study.

A mathematical method called Cluster Analysis was applied in this research. Seventy-five variables were selected from literature review and site photos. According to the results of a Principal Component Analysis, the eigenvalues represent seven meaningful dimensions that can be used for analysis. This research focused on the first two principal components for the garden comparison. The results indicate that the first principal component can be a way to identify the difference between classical Chinese gardens and modern Chinese gardens. The scores of classical Chinese gardens are much closer than the modern Chinese garden. The architecture structures, the use of plants, and the ownership status (private or public) are also major differences between the classical Chinese gardens and modern Chinese gardens. The second principal component indicates the modern gardens can be grouped into two different categories: one group's style is more naturalistic, and one group has a more artificial environment.

The BLA and MED program at Michigan State University taught me to understand much more about landscape architecture, and helped me to develop my ability to identify, analyze, and find a way to solve problems. Before I went to the university, I thought a good landscape architect just needed to have a better understanding of arts and be able to create a more beautiful environment for people. However, after six years' study in the BLA and MED programs, I realized



A scatter graph of the relationship of all the eight gardens, based on the garden scores in principal component 1 and 2.

that landscape architecture involves many more disciplines than I thought, including fine arts, horticulture, environmental psychology, ecology, geography, soil science, chemistry, and so on. A great design should not only have aesthetics, but also close and harmonious relationship with culture and ecology, in order to meet what people really need and reduce environmental issues. Also, many group projects and the experience in different design competitions in school helped me to understand how to be a good team player and how to work with professionals and the people in different disciplines. Taking second place in the EPA Campus Rainworks Competition is the best example of our great teamwork skills, and I am so proud that I could be one of the team members. Finally, I want to thank all of the faculty in the Landscape Architecture program for their understanding, patience, and encouragement, and for pushing me further than I thought I could go.

Maura Brandi Internship Fund

Maura Brandi was a sophomore at Michigan State University (MSU), studying to become a landscape architect. She spent her summer of 2014 gaining valuable experience in the field of landscape architecture and strengthening her desire to combine her love of water resources with her career. Tragically, she passed away in a car accident in early 2015. An internship fund was established to honor Maura's enthusiasm for life and her chosen occupation.

The Maura Brandi Internship Fund is endowed and held by the Charlevoix County Community Foundation (CCCF). MSU Landscape Architecture program students are preferred candidates. The goal is to raise \$40,000 for the Maura Brandi Internship Fund, which will provide a \$2,000 stipend for one (1) internship at the Tip of the Mitt Watershed Council (TOMWC) each summer. The intern will gain a wide variety of work experience in land and water resource conservation projects.

To support the fund, consider one of the following payment methods. Checks, payable to the CCCF – Maura Brandi Internship Fund, can be mailed to the CCCF at P.O. Box 718, East Jordan, MI 49727. Or, online credit card gifts may be made by visiting www.c3f.org, clicking on "Make a Gift," and choosing the Maura Brandi Internship Fund from the dropdown menu.

If you have any questions, please contact John W. Campbell at 231-330-3559 or jwc@siteplanning.com

The LAAAB requests articles of interest from alumni and friends for future newsletters. We plan to publish an annual newsletter each fall. Please send articles, notes, photos or other news about alumni to the newsletter editor Steve Troost via email at: troosts@msu.edu or via mail at: 408 West Circle Drive, Room 412 East Lansing, MI 48824.

All information should be submitted no later than June 1st.

Please contact the School of Planning, Design and Construction to change any contact information at 517.432.0704 or email spdc@msu.edu.

Also, please visit the school's website at www.spdc.msu.edu for additional program and LAAAB information.

All photographs and images courtesy of article authors, LAAAB, or SPDC faculty unless otherwise noted.

Michigan State University is an affirmative action, equal-opportunity employer.